

2012

## 2010 Census Community Data Brochure- City of St. Leo

Center for Small Towns (University of Minnesota, Morris)

Upper Minnesota Valley Regional Development Commission

Follow this and additional works at: <http://digitalcommons.morris.umn.edu/cst>

---

### Recommended Citation

Center for Small Towns (University of Minnesota, Morris) and Upper Minnesota Valley Regional Development Commission, "2010 Census Community Data Brochure- City of St. Leo" (2012). *Center for Small Towns*. Book 59.  
<http://digitalcommons.morris.umn.edu/cst/59>

This Book is brought to you for free and open access by University of Minnesota Morris Digital Well. It has been accepted for inclusion in Center for Small Towns by an authorized administrator of University of Minnesota Morris Digital Well. For more information, please contact [skulann@morris.umn.edu](mailto:skulann@morris.umn.edu).

# Housing & School Enrollment

The data presented below includes statistics related to school enrollment and housing in the Region, including median home values, median rent, median monthly housing costs and vacancy rates for communities in the UMRDC Region and the State of Minnesota.

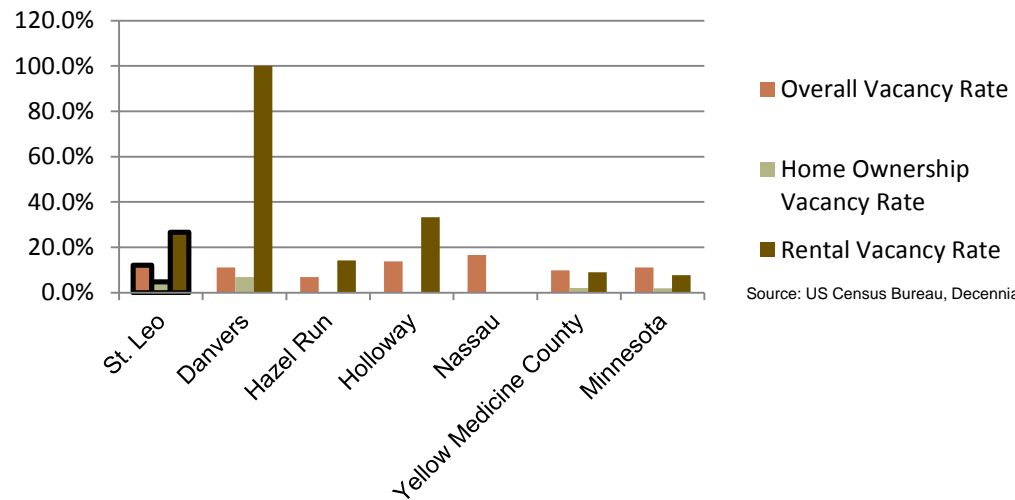
At \$39,000, the median home value in St. Leo is below that of both Yellow Medicine County and the State of Minnesota, however it falls in the middle for median home values among similar sized communities in the Region. This trend continues for median monthly housing costs for homeowners. The median rent in St. Leo is also below that of the county and state, but falls in the middle compared to other similar communities in the Region.

## 2010 Housing Statistics

City	Median Home Value	Median Rent	Median Monthly Housing Costs
<b>St. Leo</b>	<b>\$39,000</b>	<b>\$433</b>	<b>\$656</b>
Boyd	\$22,200	\$535	\$550
Danvers	\$96,700	N/A	\$955
Hazel Run	\$60,000	\$425	\$683
Holloway	\$34,000	\$204	\$850
Nassau	\$21,300	N/A	\$625
Yellow Medicine County	\$97,100	\$505	\$997
Minnesota	\$206,200	\$759	\$1,549

Source: US Census Bureau, ACS (2006-2010)

## 2010 Vacancy Rates



Source: US Census Bureau, Decennial

Home ownership vacancy rate and rental vacancy rate are the proportion of the homeowner or rental inventory that is vacant "for sale" or vacant "for rent." The overall vacancy rate includes other vacancies such as vacant "sold - not occupied," seasonal housing and vacant "rented - not occupied." In 2010, the city of St. Leo had vacancy rates typical of communities this size.

## School Enrollment Since 1999

School District	1999-2000	2005-2006	2010-2011	% Change
Benson School District	1,216	1,050	970	-20.23%
<b>Canby School District</b>	<b>766</b>	<b>581</b>	<b>522</b>	<b>-31.85%</b>
Clinton-Graceville-Beardsley School District	565	434	377	-33.27%
Dawson-Boyd School District	681	544	517	-24.08%
Kerkhoven-Murdock-Sunburg School District	664	585	557	-16.11%
Lac qui Parle Valley School District	1,245	1,007	820	-34.14%
Lakeview School District	589	609	595	1.02%
M.A.C.C.R.A.Y. School District	986	790	674	-31.64%
Montevideo School District	1,599	1,459	1,342	-16.07%
Ortonville School District	717	530	527	-26.50%
Yellow Medicine East School District	1,299	1,081	862	-33.64%

Source: Minnesota Department of Education

St. Leo is part of the Canby School District which, like other school districts in the Region, has seen a steady decline in school enrollment over the last decade. This decline in enrollment is consistent with the declining and aging population in the Region. Note that data was only available for public school districts.

UMVRDC staff developed the concept and design for the Community Profile Brochures and data was collected by students and staff from the Center for Small Towns at the University of Minnesota, Morris. All information was collected from trusted sources such as the U.S. Census Bureau, the American Community Survey, Minnesota Department of Employment & Economic Development (DEED), and the Minnesota Department of Education and is presumed to be accurate.



Helping Communities Prosper

# 2010 Census Data for St. Leo, Minnesota



This Community Profile Brochure is comprised of statistical information from a variety of sources and will provide a snapshot of historical and current demographic, economic and social trends in the Upper Minnesota Valley Region. The purpose is to provide a concise summary of key community statistics to aid decision making about community and economic development.

This statistical and informational profile was compiled by the UMRDC in collaboration with The Center for Small Towns at the University of Minnesota, Morris for all five counties (Big Stone, Chippewa, Lac qui Parle, Swift and Yellow Medicine) and 37 cities in the Upper Minnesota Valley Region.



Upper Minnesota Valley REGIONAL DEVELOPMENT COMMISSION  
Helping Communities Prosper

323 W. Schlieman Ave. Appleton, MN 56208 320.289.1981 www.umvrdc.org

For more information, or if you have questions, please visit our website: [www.umvrdc.org](http://www.umvrdc.org).

# Demographics

The demographic profile below provides a snapshot of St. Leo and surrounding communities' historical, current and future population trends including population distribution and make up.

## Comparison Historical Population from 1960 to 2010

City	1960	1970	1980	1990	2000	2010	% Change
<b>St. Leo</b>	<b>129</b>	<b>153</b>	<b>147</b>	<b>111</b>	<b>106</b>	<b>100</b>	<b>-22.48%</b>
Households	NA	NA	NA	53	54	51	-3.77%
Average Household Size	NA	NA	NA	0.21	1.96	1.96	NA
Boyd	419	311	329	251	210	175	-58.23%
Danvers	132	136	152	98	108	97	-26.52%
Hazel Run	115	115	93	81	64	63	-45.22%
Holloway	242	146	142	123	112	92	-62.90%
Nassau	115	126	115	83	83	72	-37.39%
<b>Yellow Medicine County</b>	<b>15,523</b>	<b>14,418</b>	<b>13,653</b>	<b>11,684</b>	<b>11,080</b>	<b>10,438</b>	<b>-32.76%</b>

Source: US Census Bureau

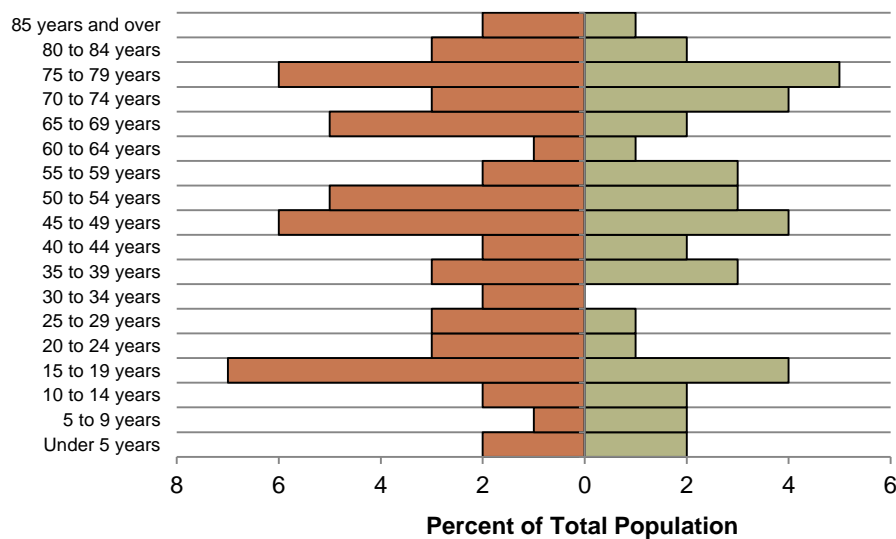
## St. Leo Population Projections

	2015	2020	2025	2030	2035	% Change
<b>St. Leo</b>	<b>91</b>	<b>90</b>	<b>87</b>	<b>86</b>	<b>85</b>	<b>-6.59%</b>
Yellow Medicine County	9,980	9,970	9,720	9,660	9,600	-3.81%
UMVRDC Region	45,510	45,300	45,000	44,500	44,110	-3.08%

Source: Minnesota Demographic Center

## St. Leo Population Distribution, 2010

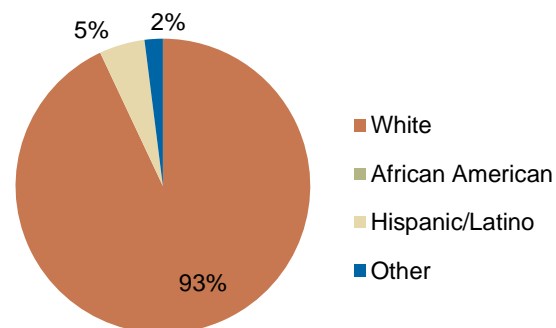
■ % Male ■ % Female



Source: U.S. Census Bureau, 2010 Decennial Census

St. Leo has seen an overall decrease in population of nearly 23 percent from 1960-2010. However, the decline in population has been slower over the past 20 years. Despite the steadying of the population in recent years, it is projected to decrease over the next few decades.

## Race, 2010



Source: US Census Bureau, Decennial Census

The population distribution above shows that the community is aging with a large percentage of the population above the age of 45 years. St. Leo has a 93% white population, which is typical for a community of this size.

# Economic

The employment and industry data below represents a picture of the overall economic health of St. Leo and Yellow Medicine County. This data shows the diversity of the Region's economy.

## Annual Median Household Income:

- City of St. Leo - \$38,125
- Big Stone - \$44,438
- Chippewa - \$44,712
- Lac qui Parle - \$48,269
- Swift - \$43,846
- **Yellow Medicine - \$50,740**
- UMRDC Region - \$46,401
- Minnesota - \$57,243

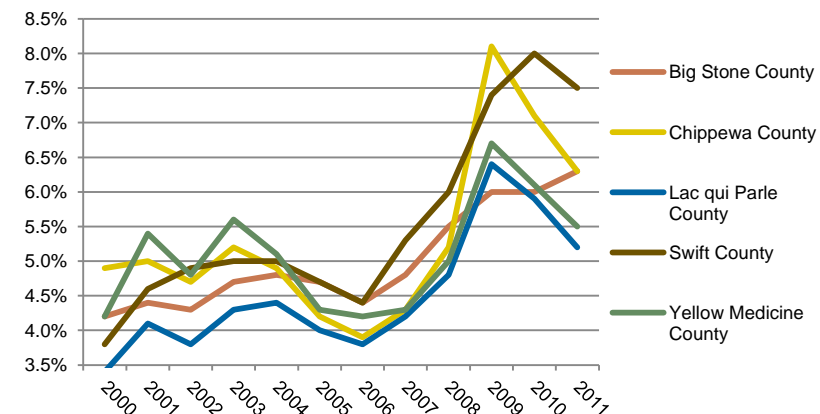
Source: 2007-2011 American Community Survey, U.S. Census Bureau

## Types of Employment in St. Leo, 2011

Types of Industry	Number of Employees	Number of Firms	Total Wages	Average Weekly Wage
Public Administration	2	1	\$10,140	\$117
<b>Total, All Industries</b>	<b>18</b>	<b>7</b>	<b>\$397,617</b>	<b>\$423</b>

Source: Minnesota Department of Employment and Economic Development, QCEW

## Unemployment Rates, 2000-2011

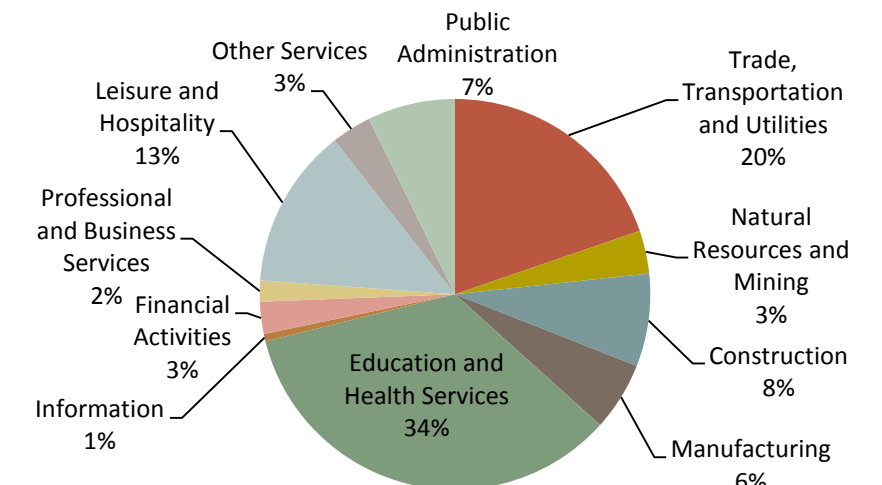


Source: Minnesota Department of Employment and Economic Development, LAUS

The employment categories shown in the table above and chart below show the 11 Super Sectors of Industry, which is the federal standard in data pertaining to business and industry. Much of the economic activity in St. Leo is outside the 11 Super Sectors, since only two of 18 employees and one of seven firms in St. Leo are within the sectors. The pie chart below details that in Yellow Medicine County, just over one third of all employment comes from Education and Health Services and another large employment sector is Trade, Transportation and Utilities. Yellow Medicine County had a slight increase in unemployment during the Recession of 2007-2009, but in 2011 had an unemployment rate under 5.5%.



## Employment by Industry in Yellow Medicine County



Source: Minnesota Department of Employment and Economic Development, QCEW