

2012

2010 Census Community Data Brochure- City of Hanley Falls

Center for Small Towns (University of Minnesota, Morris)

Upper Minnesota Valley Regional Development Commission

Follow this and additional works at: <http://digitalcommons.morris.umn.edu/cst>

Recommended Citation

Center for Small Towns (University of Minnesota, Morris) and Upper Minnesota Valley Regional Development Commission, "2010 Census Community Data Brochure- City of Hanley Falls" (2012). *Center for Small Towns*. Book 62.
<http://digitalcommons.morris.umn.edu/cst/62>

This Book is brought to you for free and open access by University of Minnesota Morris Digital Well. It has been accepted for inclusion in Center for Small Towns by an authorized administrator of University of Minnesota Morris Digital Well. For more information, please contact skulann@morris.umn.edu.

Housing & School Enrollment

The data presented below includes statistics related to school enrollment and housing in the Region, including median home values, median rent, median monthly housing costs and vacancy rates for communities in the UMRDC Region and the State of Minnesota.

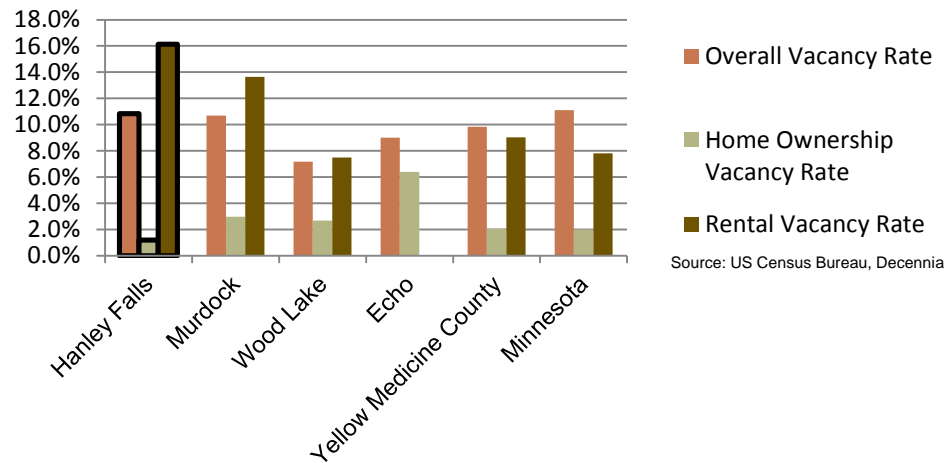
2010 Housing Statistics

City	Median Home Value	Median Rent	Median Monthly Housing Costs
Hanley Falls	\$63,800	\$246	\$892
Echo	\$35,000	\$460	\$831
Murdock	\$77,500	\$642	\$840
Milan	\$55,000	\$398	\$797
Wood Lake	\$60,000	\$571	\$804
Yellow Medicine County	\$97,100	\$505	\$997
Minnesota	\$206,200	\$759	\$1,549

Source: US Census Bureau, ACS (2006-2010)

At \$63,800, the median home value in Hanley Falls is below both that of Yellow Medicine County and the State of Minnesota, however it falls in the middle for median home values among similar sized communities in the Region. While the median monthly housing costs for homeowners is below both the county and the state, it is the highest among other similar communities. The median rent in Hanley Falls on the other hand, is well below that for the state and county as well as all of the other similar sized communities in the Region.

2010 Vacancy Rates



Source: US Census Bureau, Decennial

Home ownership vacancy rate and rental vacancy rate are the proportion of the homeowner or rental inventory that is vacant "for sale" or vacant "for rent." The overall vacancy rate includes other vacancies such as vacant "sold - not occupied," seasonal housing and vacant "rented - not occupied." In 2010, the city of Hanley Falls had the highest overall and rental vacancy rates among surrounding communities.

School Enrollment Since 1999

School District	1999-2000	2005-2006	2010-2011	% Change
Benson School District	1,216	1,050	970	-20.23%
Canby School District	766	581	522	-31.85%
Clinton-Graceville-Beardsley School District	565	434	377	-33.27%
Dawson-Boyd School District	681	544	517	-24.08%
Kerkhoven-Murdock-Sunburg School District	664	585	557	-16.11%
Lac qui Parle Valley School District	1,245	1,007	820	-34.14%
Lakeview School District	589	609	595	1.02%
M.A.C.C.R.A.Y. School District	986	790	674	-31.64%
Montevideo School District	1,599	1,459	1,342	-16.07%
Ortonville School District	717	530	527	-26.50%
Yellow Medicine East School District	1,299	1,081	862	-33.64%

Source: Minnesota Department of Education

Hanley Falls is part of the Yellow Medicine East School District which, like other school districts in the Region, has seen a steady decline in school enrollment over the last decade. The decline in enrollment is consistent with the declining and aging population in the Region. Note that data was only available for public school districts.

UMVRDC staff developed the concept and design for the Community Profile Brochures and data was collected by students and staff from the Center for Small Towns at the University of Minnesota, Morris. All information was collected from trusted sources such as the U.S. Census Bureau, the American Community Survey, Minnesota Department of Employment & Economic Development (DEED), and the Minnesota Department of Education and is presumed to be accurate.



Upper Minnesota Valley
REGIONAL DEVELOPMENT COMMISSION



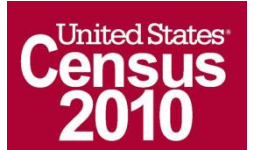
Helping Communities Prosper

2010 Census Data for Hanley Falls, Minnesota



This Community Profile Brochure is comprised of statistical information from a variety of sources and will provide a snapshot of historical and current demographic, economic and social trends in the Upper Minnesota Valley Region. The purpose is to provide a concise summary of key community statistics to aid decision making about community and economic development.

This statistical and informational profile was compiled by the UMRDC in collaboration with The Center for Small Towns at the University of Minnesota, Morris for all five counties (Big Stone, Chippewa, Lac qui Parle, Swift and Yellow Medicine) and 37 cities in the Upper Minnesota Valley Region.



Demographics

The demographic profile below provides a snapshot of Hanley Falls and surrounding communities' historical, current and future population trends including population distribution and make up.

Comparison Historical Population from 1960 to 2010

City	1960	1970	1980	1990	2000	2010	% Change
Hanley Falls	334	265	265	246	323	304	-8.98%
Households	134	103	NA	111	115	107	-20.15%
Average Household Size	2.49	2.57	NA	2.22	2.81	2.84	13.99%
Echo	459	356	334	304	278	278	-39.43%
Milan	482	427	417	353	326	369	-23.44%
Murdock	381	358	343	282	303	278	-27.03%
Wood Lake	506	418	420	406	436	439	-13.24%
Yellow Medicine County	15,523	14,415	13,653	11,684	11,080	10,438	-32.76%

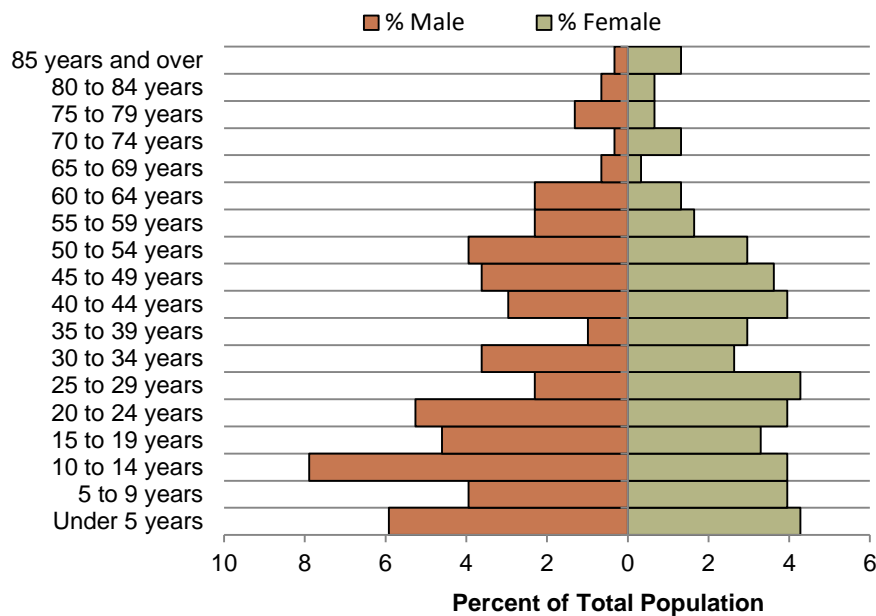
Source: US Census Bureau

Hanley Falls Population Projections

	2015	2020	2025	2030	2035	% Change
Hanley Falls	323	339	351	368	387	19.81%
Yellow Medicine County	9,980	9,970	9,720	9,660	9,600	-3.81%
UMVRDC Region	45,510	45,300	45,000	44,500	44,110	-3.08%

Source: Minnesota Demographic Center

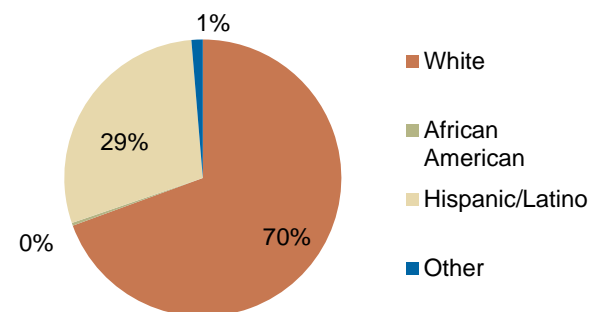
Hanley Falls Population Distribution, 2010



Source: U.S. Census Bureau, 2010 Decennial Census

Hanley Falls has seen the smallest overall decrease in population of nearly 9 percent from 1960-2010 compared to similar sized communities. A larger decrease from 1960 to 1970 was offset by an increase from 1990 to 2000. The population is projected to increase by nearly 20 percent over the next few decades. This projected increase in population may be because of the large percentage of youth in the community as well as Hanley Falls' diverse population.

Race, 2010



Source: US Census Bureau, Decennial Census

The population distribution shows that a majority of the population is below the age of 35, with a substantial percentage of the population between 10 and 14 years old. Hanley Falls is much more diverse than other communities with 30% of the population being non-white.

Economic

The employment and industry data below represents a picture of the overall economic health of Hanley Falls and Yellow Medicine County. This data shows the diversity of the Region's economy.

Annual Median Household Income:

- City of Hanley Falls- \$30,208
- Big Stone - \$44,438
- Chippewa - \$44,712
- Lac qui Parle - \$48,269
- Swift - \$43,846
- Yellow Medicine - \$50,740
- UMRDC Region - \$46,401
- Minnesota - \$57,243

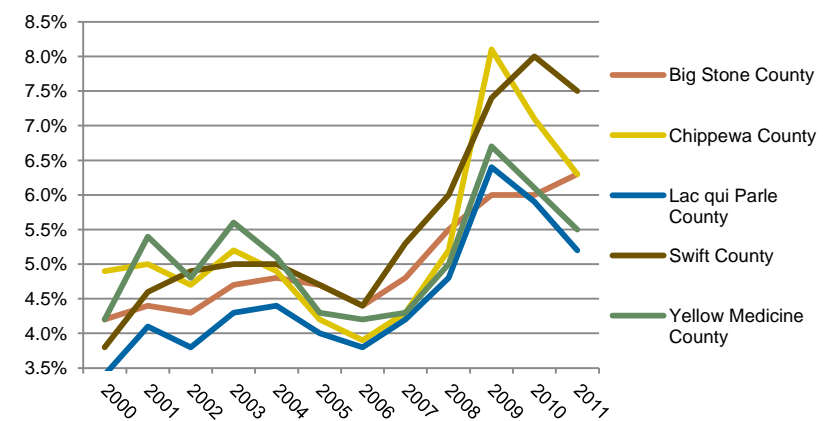
Source: 2007-2011 American Community Survey, U.S. Census Bureau

Types of Employment in Hanley Falls, 2011

Types of Industry	Number of Employees	Number of Firms	Total Wages	Average Weekly Wage
Public Administration	14	1	\$130,709	\$193
Total, All Industries	43	9	\$587,623	\$263

Source: Minnesota Department of Employment and Economic Development, QCEW

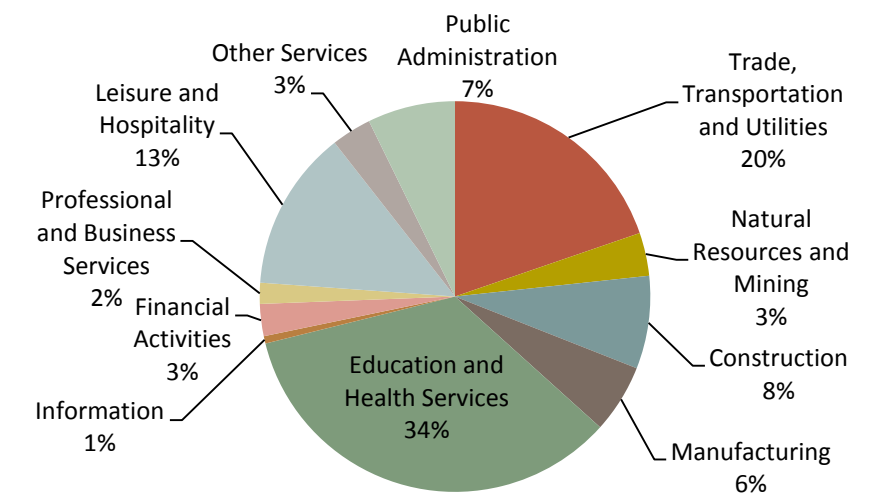
Unemployment Rates, 2000-2011



Source: Minnesota Department of Employment and Economic Development, LAUS

The employment categories shown in the table above and chart below show the 11 Super Sectors of Industry, which is the federal standard in data pertaining to business and industry. Much of the economic activity in Hanley Falls is outside of the 11 Super Sectors since only 14 of the 42 employees and 1 of the 9 firms is represented within the 11 sectors. The pie chart below details that in Yellow Medicine County, just over one third of all employment comes from Education and Health Services, but the Trade, Transportation and Utilities sector is also a large source of employment in the county. Yellow Medicine County had a slight increase in unemployment during the Recession of 2007-2009, but in 2011 had an unemployment rate under 5.5%.

Employment by Industry in Yellow Medicine County



Source: Minnesota Department of Employment and Economic Development, QCEW

