

2012

2010 Census Community Data Brochure- City of Granite Falls

Center for Small Towns (University of Minnesota, Morris)

Upper Minnesota Valley Regional Development Commission

Follow this and additional works at: <http://digitalcommons.morris.umn.edu/cst>

Recommended Citation

Center for Small Towns (University of Minnesota, Morris) and Upper Minnesota Valley Regional Development Commission, "2010 Census Community Data Brochure- City of Granite Falls" (2012). *Center for Small Towns*. Book 44.
<http://digitalcommons.morris.umn.edu/cst/44>

This Book is brought to you for free and open access by University of Minnesota Morris Digital Well. It has been accepted for inclusion in Center for Small Towns by an authorized administrator of University of Minnesota Morris Digital Well. For more information, please contact skulann@morris.umn.edu.

Housing & School Enrollment

The data presented below includes statistics related to school enrollment and housing in the Region, including median home values, median rent, median monthly housing costs and vacancy rates for communities in the UMRVDC Region and the State of Minnesota.

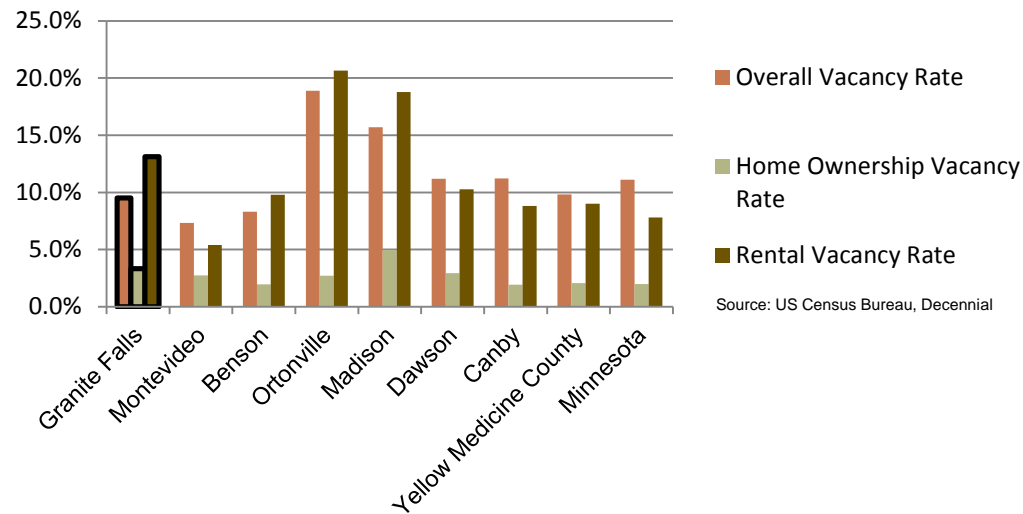
2010 Housing Statistics

City	Median Home Value	Median Rent	Median Monthly Housing Costs
Granite Falls	\$102,000	\$499	\$954
Canby	\$64,500	\$384	\$848
Clara City	\$81,800	\$682	\$985
Benson	\$101,000	\$451	\$1,026
Montevideo	\$84,600	\$547	\$978
Yellow-Medicine County	\$97,100	\$505	\$997
Minnesota	\$206,200	\$759	\$1,549

Source: US Census Bureau, ACS (2006-2010)

The median home value in Granite Falls is the highest among other similar sized cities in the Region and it is higher than the average for Yellow Medicine County. Median monthly rent and median monthly housing costs for homeowners, however fall in the middle compared to other communities. The median rent in Granite Falls is even slightly lower than the average for the county.

2010 Vacancy Rates



Source: US Census Bureau, Decennial

Home ownership vacancy rate and rental vacancy rate are the proportion of the homeowner or rental inventory that is vacant "for sale" or vacant "for rent." The overall vacancy rate includes other vacancies such as vacant "sold - not occupied," seasonal housing and vacant "rented - not occupied". In 2010, the city of Granite Falls had similar overall and home ownership vacancy rates compared to like-sized communities. However, the city had over 67 vacant rental units.

School Enrollment Since 1999

School District	1999-2000	2005-2006	2010-2011	% Change
Benson School District	1,216	1,050	970	-20.23%
Canby School District	766	581	522	-31.85%
Clinton-Graceville-Beardsley School District	565	434	377	-33.27%
Dawson-Boyd School District	681	544	517	-24.08%
Kerkhoven-Murdock-Sunburg School District	664	585	557	-16.11%
Lac qui Parle Valley School District	1,245	1,007	820	-34.14%
Lakeview School District	589	609	595	1.02%
M.A.C.C.R.A.Y. School District	986	790	674	-31.64%
Montevideo School District	1,599	1,459	1,342	-16.07%
Ortonville School District	717	530	527	-26.50%
Yellow Medicine East School District	1,299	1,081	862	-33.64%

Source: Minnesota Department of Education

Granite Falls is part of the Yellow Medicine East School District, which, like other school districts in the Region, has seen a steady decline in school enrollment over the last decade. The decline in enrollment is consistent with the declining and aging population in the Region.

UMVRDC staff developed the concept and design for the Community Profile Brochures and data was collected by students and staff from the Center for Small Towns at the University of Minnesota, Morris. All information was collected from trusted sources such as the U.S. Census Bureau, the American Community Survey, Minnesota Department of Employment & Economic Development (DEED), and the Minnesota Department of Education and is presumed to be accurate.



Helping Communities Prosper

2010 Census Data for Granite Falls, Minnesota



This Community Profile Brochure is comprised of statistical information from a variety of sources and will provide a snapshot of historical and current demographic, economic and social trends in the Upper Minnesota Valley Region. The purpose is to provide a concise summary of key community statistics to aid decision making about community and economic development.

This statistical and informational profile was compiled by the UMRVDC in collaboration with The Center for Small Towns at the University of Minnesota, Morris for all five counties (Big Stone, Chippewa, Lac qui Parle, Swift and Yellow Medicine) and 37 cities in the Upper Minnesota Valley Region.



Demographics

The demographic profile below provides a snapshot of Granite Falls and surrounding communities' historical, current and future population trends including population distribution and make up.

Comparison Historical Population from 1960 to 2010

City	1960	1970	1980	1990	2000	2010	% Change
Granite Falls	2,165	2,582	2,666	3,083	3,070	2,897	33.81%
Households	732	862	NA	1,308	1,344	1,282	75.14%
Average Household Size	2.96	3.00	NA	2.36	2.28	2.26	-23.60%
Canby	2,146	2,147	2,143	1,826	1,903	1,795	-16.36%
Clara City	1,358	1,491	1,574	1,307	1,393	1,360	0.15%
Benson	3,678	3,484	3,656	3,235	3,376	3,240	-11.91%
Montevideo	5,693	5,661	5,845	5,499	5,346	5,383	-5.45%
Yellow Medicine County	15,523	14,415	13,653	11,684	11,080	10,438	-32.76%

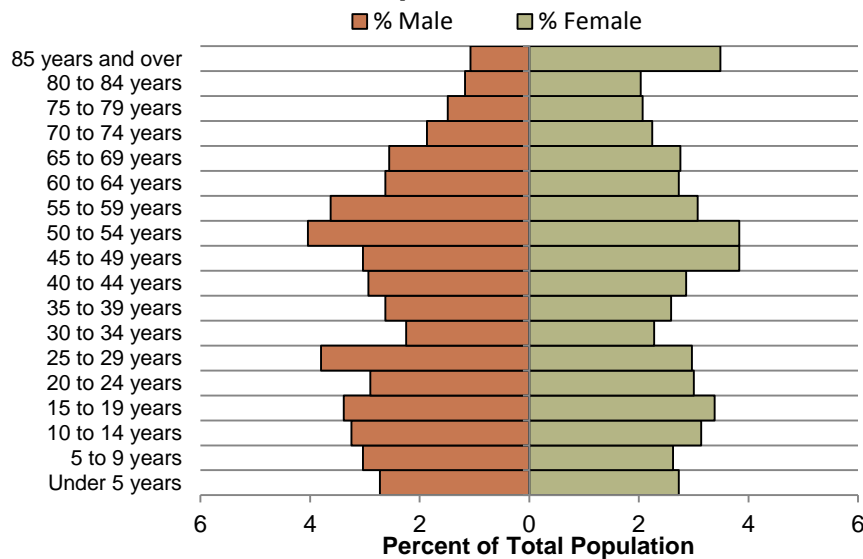
Source: US Census Bureau

Granite Falls Population Projections

	2015	2020	2025	2030	2035	% Change
Granite Falls	3,051	3,154	3,209	3,231	3,258	6.78%
Yellow Medicine County	9,980	9,970	9,720	9,660	9,600	-3.81%
UMVRDC Region	45,510	45,300	45,000	44,500	44,110	-3.08%

Source: Minnesota Demographic Center

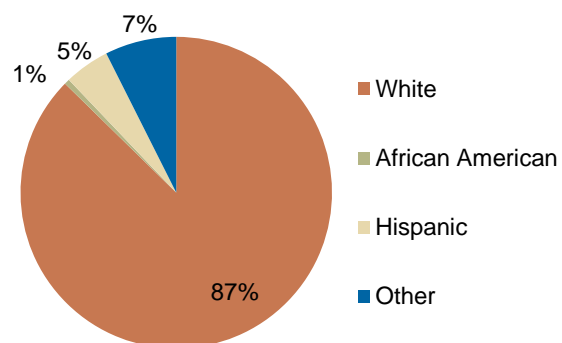
Granite Falls Population Distribution, 2010



Source: U.S. Census Bureau, 2010 Decennial Census

Although Granite Falls lost population from 1990 to 2000 and 2000 to 2010, the city has seen an overall increase in population from 1960-2010 of nearly 34%--the greatest population growth in the Region. Granite Falls is also one of the few cities in the Region that has experienced historical population growth and is projected to experience population growth into the future.

Race, 2010



Source: US Census Bureau, Decennial

The population distribution above shows a healthy population distribution between older and younger age cohorts. Granite Falls has more adolescent and young adult populations than many cities within the Region. Granite Falls is more diverse than most communities in the region with over 13% of the population being non-white.

Economic

The employment and industry data below represents a picture of the overall economic health of Granite Falls and Yellow Medicine County. This data shows the diversity of the Region's economy.

Annual Median Household Income:

- City of Granite Falls - \$38,924
- Big Stone - \$44,438
- Chippewa - \$44,712
- Lac qui Parle - \$48,269
- Swift - \$43,846
- Yellow Medicine - \$50,740
- UMRDC Region - \$46,401
- Minnesota - \$57,243

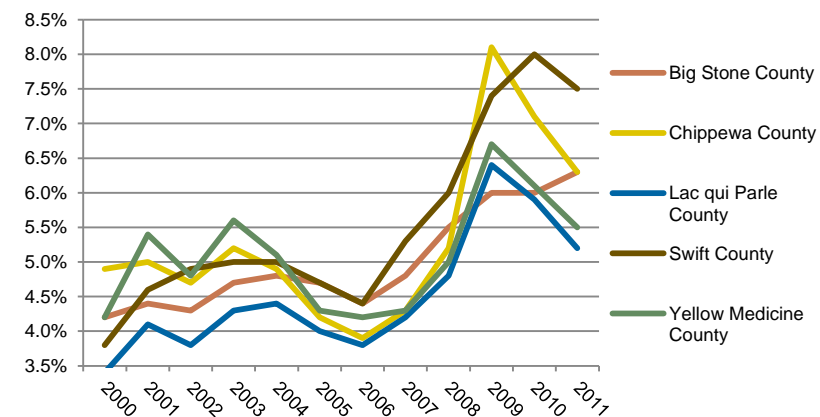
Source: 2007-2011 American Community Survey, U.S. Census Bureau

Types of Employment in Granite Falls, 2011

Types of Industry	Number of Employees	Number of Firms	Total Wages	Average Weekly Wage
Education and Health Services	614	20	\$20,423,758	\$641
Trade, Transportation and Utilities	277	31	\$9,537,595	\$660
Public Administration	165	11	\$5,940,006	\$691
Leisure and Hospitality	139	14	\$1,453,647	\$201
Professional and Business Services	54	13	\$2,049,078	\$732
Other Services	50	11	\$979,177	\$380
Total, All Industries	1,786	133	\$67,135,104	\$720

Source: Minnesota Department of Employment and Economic Development, QCEW

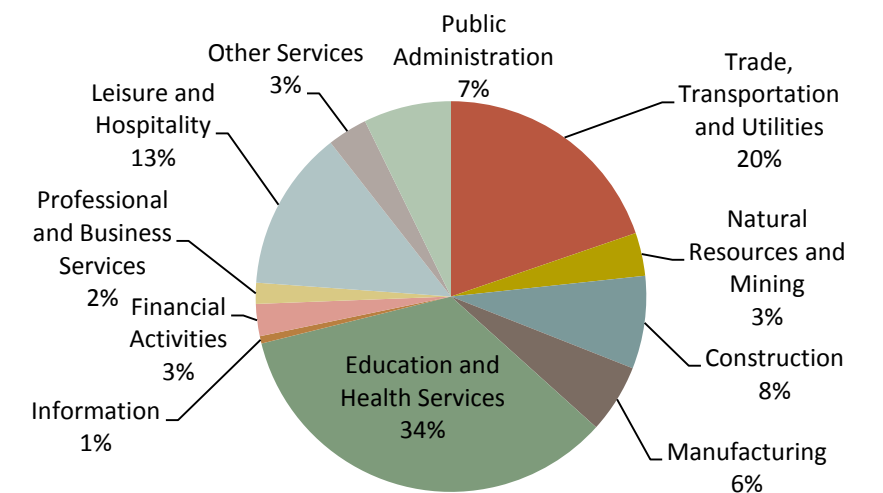
Unemployment Rates, 2000-2011



Source: Minnesota Department of Employment and Economic Development, LAUS

The employment categories shown in the table above and chart below show the 11 Super Sectors of Industry, which is the federal standard in data pertaining to business and industry. Much of the economic activity in Granite Falls is in Education and Health Services. The pie chart below details that in Yellow Medicine County, just over one third of all employment comes from Education and Health Services. Yellow Medicine County had a slight increase in unemployment during the Recession of 2007 - 2009, but in 2011 had an unemployment rate under 5.5%.

Employment by Industry in Yellow Medicine County



Source: Minnesota Department of Employment and Economic Development, QCEW

