

2012

2010 Census Community Data Brochure- City of Clarkfield

Center for Small Towns (University of Minnesota, Morris)

Upper Minnesota Valley Regional Development Commission

Follow this and additional works at: <http://digitalcommons.morris.umn.edu/cst>

Recommended Citation

Center for Small Towns (University of Minnesota, Morris) and Upper Minnesota Valley Regional Development Commission, "2010 Census Community Data Brochure- City of Clarkfield" (2012). *Center for Small Towns*. Book 46.
<http://digitalcommons.morris.umn.edu/cst/46>

This Book is brought to you for free and open access by University of Minnesota Morris Digital Well. It has been accepted for inclusion in Center for Small Towns by an authorized administrator of University of Minnesota Morris Digital Well. For more information, please contact skulann@morris.umn.edu.

Housing & School Enrollment

The data presented below includes statistics related to school enrollment and housing in the Region, including median home values, median rent, median monthly housing costs and vacancy rates for communities in the UMRVDC Region and the State of Minnesota.

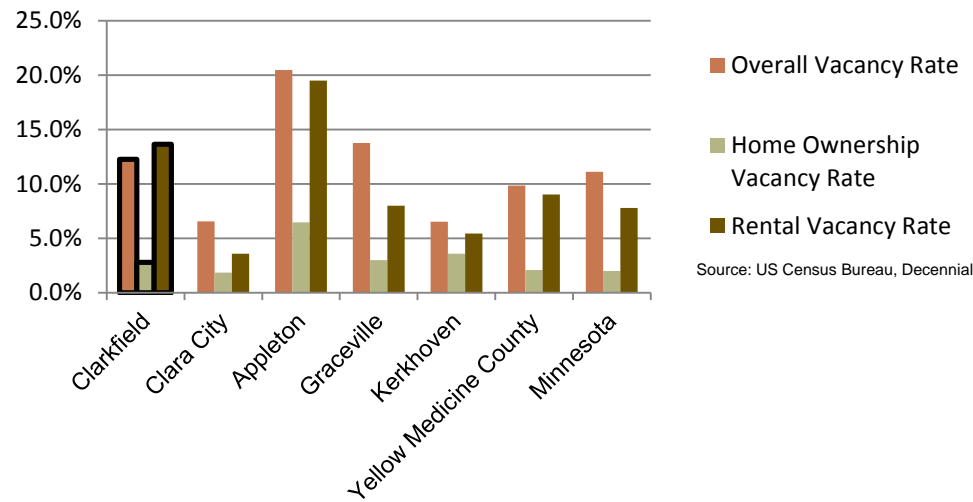
2010 Housing Statistics

| City | Median Home Value | Median Rent | Median Monthly Housing Costs |
|------------------------|-------------------|--------------|------------------------------|
| Clarkfield | \$50,400 | \$469 | \$828 |
| Canby | \$64,500 | \$384 | \$848 |
| Graceville | \$62,400 | \$534 | \$993 |
| Hanley Falls | \$63,800 | \$246 | \$892 |
| Kerkhoven | \$86,900 | \$325 | \$850 |
| Wood Lake | \$60,000 | \$571 | \$804 |
| Yellow Medicine County | \$97,100 | \$505 | \$997 |
| Minnesota | \$206,200 | \$759 | \$1,549 |

Source: US Census Bureau, ACS (2006-2010)

At \$50,400, the median home value in Clarkfield is the lowest among similar sized and nearby cities within the Region. It is also well below the median home value in Yellow Medicine County and the State of Minnesota. The median monthly rent and housing costs for homeowners however, fall in the middle when compared to other cities within the Region

2010 Vacancy Rates



Home ownership vacancy rate and rental vacancy rate are the proportion of the homeowner or rental inventory that is vacant "for sale" or vacant "for rent." The overall vacancy rate includes other vacancies such as vacant "sold - not occupied," seasonal housing and vacant "rented - not occupied." In 2010, the city of Clarkfield had the second highest rental vacancy rate among surrounding communities. The city had 15 census recognized rental units out of 105.

School Enrollment Since 1999

| School District | 1999-2000 | 2005-2006 | 2010-2011 | % Change |
|--|--------------|--------------|------------|----------------|
| Benson School District | 1,216 | 1,050 | 970 | -20.23% |
| Canby School District | 766 | 581 | 522 | -31.85% |
| Clinton-Graceville-Beardsley School District | 565 | 434 | 377 | -33.27% |
| Dawson-Boyd School District | 681 | 544 | 517 | -24.08% |
| Kerkhoven-Murdock-Sunburg School District | 664 | 585 | 557 | -16.11% |
| Lac qui Parle Valley School District | 1,245 | 1,007 | 820 | -34.14% |
| Lakeview School District | 589 | 609 | 595 | 1.02% |
| M.A.C.C.R.A.Y. School District | 986 | 790 | 674 | -31.64% |
| Montevideo School District | 1,599 | 1,459 | 1,342 | -16.07% |
| Ortonville School District | 717 | 530 | 527 | -26.50% |
| Yellow Medicine East School District | 1,299 | 1,081 | 862 | -33.64% |

Source: Minnesota Department of Education

Clarkfield is part of the Yellow Medicine East School District and, like other school districts in the Region, has seen a steady decline in school enrollment over the last decade. Clarkfield is also home to the Clarkfield Charter School which, for the 2011 - 2012 school year reported an enrollment of 75 students in pre-kindergarten through sixth grade.

UMVRDC staff developed the concept and design for the Community Profile Brochures and data was collected by students and staff from the Center for Small Towns at the University of Minnesota, Morris. All information was collected from trusted sources such as the U.S. Census Bureau, the American Community Survey, Minnesota Department of Employment & Economic Development (DEED), and the Minnesota Department of Education and is presumed to be accurate.



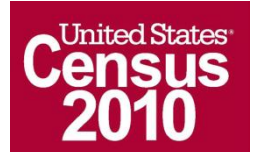
Helping Communities Prosper

2010 Census Data for Clarkfield, Minnesota



This Community Profile Brochure is comprised of statistical information from a variety of sources and will provide a snapshot of historical and current demographic, economic and social trends in the Upper Minnesota Valley Region. The purpose is to provide a concise summary of key community statistics to aid decision making about community and economic development.

This statistical and informational profile was compiled by the UMRVDC in collaboration with The Center for Small Towns at the University of Minnesota, Morris for all five counties (Big Stone, Chippewa, Lac qui Parle, Swift and Yellow Medicine) and 37 cities in the Upper Minnesota Valley Region.



Demographics

The demographic profile below provides a snapshot of Clarkfield and surrounding communities' historical, current and future population trends including population distribution and make up.

Comparison Historical Population from 1960 to 2010

| City | 1960 | 1970 | 1980 | 1990 | 2000 | 2010 | % Change |
|------------------------|--------------|--------------|--------------|------------|------------|------------|----------------|
| Clarkfield | 1,100 | 1,084 | 1,171 | 924 | 944 | 863 | -21.55% |
| Households | NA | 385 | NA | 411 | 371 | 372 | -3.38% |
| Average Household Size | NA | 2.82 | NA | 2.25 | 2.54 | 2.32 | -17.61% |
| Canby | 2,146 | 2,147 | 2,143 | 1,826 | 1,903 | 1,795 | -16.36% |
| Graceville | 823 | 735 | 780 | 671 | 605 | 577 | -29.89% |
| Hanley Falls | 334 | 265 | 265 | 246 | 323 | 304 | -8.98% |
| Kerkhoven | 645 | 641 | 761 | 732 | 759 | 759 | 17.67% |
| Wood Lake | 506 | 418 | 420 | 406 | 436 | 439 | -13.24% |
| Yellow Medicine County | 15,523 | 14,415 | 13,653 | 11,684 | 11,080 | 10,438 | -32.76% |

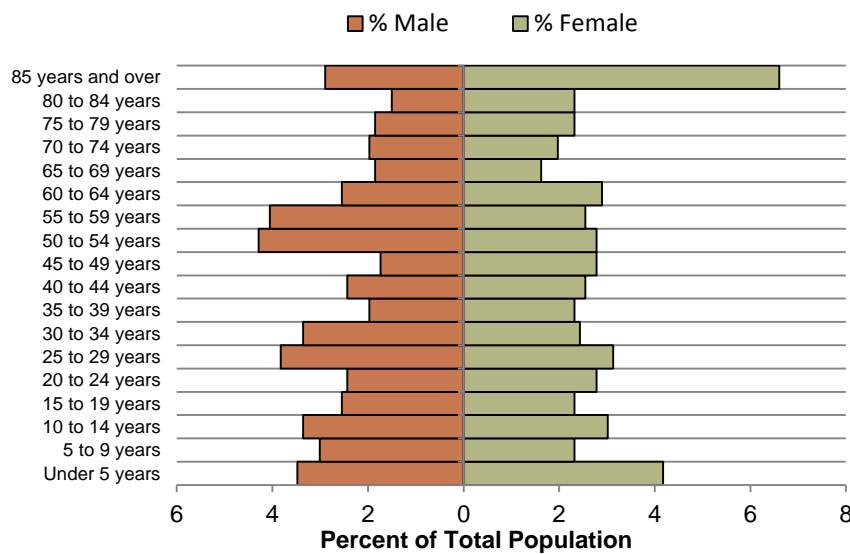
Source: US Census Bureau

Clarkfield Population Projections

| | 2015 | 2020 | 2025 | 2030 | 2035 | % Change |
|------------------------|------------|------------|------------|------------|------------|---------------|
| Clarkfield | 858 | 858 | 836 | 832 | 827 | -3.61% |
| Yellow Medicine County | 9,980 | 9,970 | 9,720 | 9,660 | 9,600 | -3.81% |
| UMVRDC Region | 45,510 | 45,300 | 45,000 | 44,500 | 44,110 | -3.08% |

Source: Minnesota Demographic Center

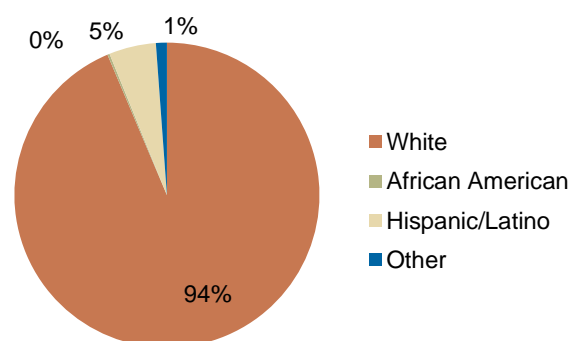
Clarkfield Population Distribution, 2010



Source: U.S. Census Bureau, 2010 Decennial Census

The population distribution shows several population percentage spikes among 50 to 55 year old males and 25 to 34 year old males. The age cohort with the largest percentage of the population in Clarkfield is made up of females 85 years and older. Clarkfield also has a 94% white population, which is typical for a community of this size.

Race, 2010



Source: US Census Bureau, Decennial

Economic

The employment and industry data below represents a picture of the overall economic health of Clarkfield and Yellow Medicine County. This data shows the diversity of the Region's economy.

Annual Median Household Income:

- City of Clarkfield - \$37,500
- Big Stone - \$44,438
- Chippewa - \$44,712
- Lac qui Parle - \$48,269
- Swift - \$43,846
- Yellow Medicine - \$50,740
- UMRDC Region - \$46,401
- Minnesota - \$57,243

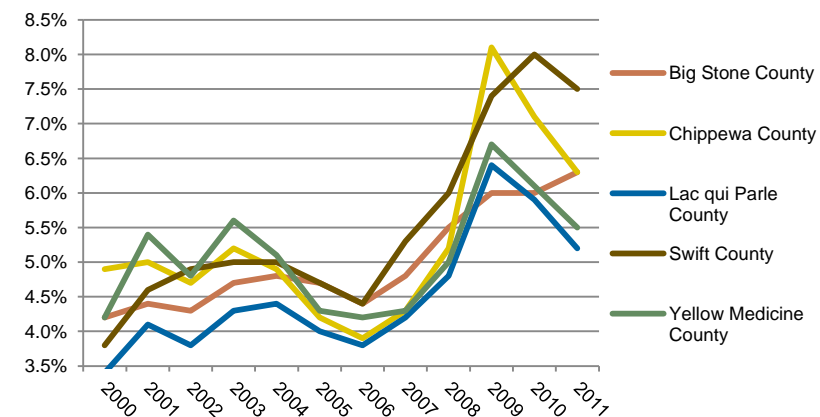
Source: 2007-2011 American Community Survey, U.S. Census Bureau

Types of Employment in Clarkfield, 2011

| Types of Industry | Number of Employees | Number of Firms | Total Wages | Average Weekly Wage |
|-------------------------------------|---------------------|-----------------|---------------------|---------------------|
| Education and Health Services | 130 | 6 | \$2,664,195 | \$394 |
| Trade, Transportation and Utilities | 65 | 9 | \$2,711,144 | \$808 |
| Financial Activities | 34 | 4 | \$1,426,809 | \$796 |
| Construction | 9 | 5 | \$296,218 | \$618 |
| Public Administration | 5 | 2 | \$133,276 | \$519 |
| Total, All Industries | 327 | 36 | \$10,287,609 | \$604 |

Source: Minnesota Department of Employment and Economic Development, QCEW

Unemployment Rates, 2000-2011

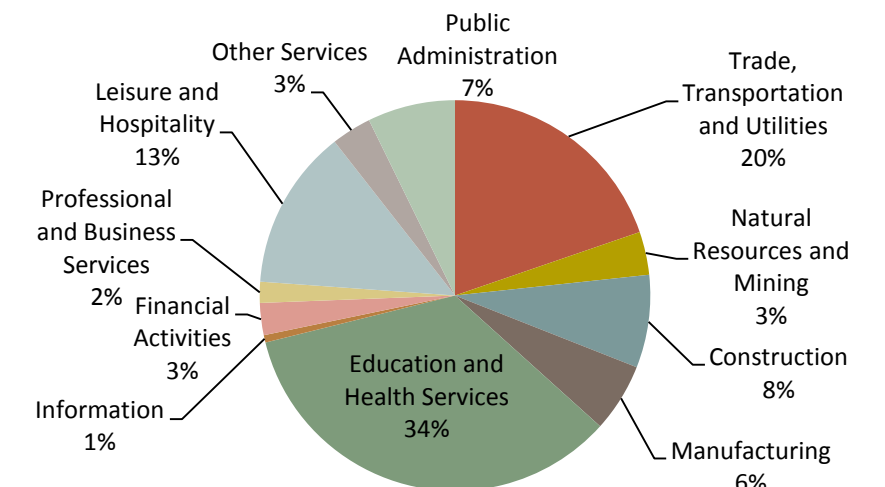


Source: Minnesota Department of Employment and Economic Development, LAUS

The employment categories shown in the table above and chart below show the 11 Super Sectors of Industry, which is the federal standard in data pertaining to business and industry. Much of the economic activity in Clarkfield is dispersed through three sectors; Education and Health Services, Trade, Transportation and Utilities, and Financial Activities. The pie chart below details that in Yellow Medicine County, just over one third of all employment comes from Education and Health Services. Yellow Medicine County had a slight increase in unemployment during the Recession of 2007 - 2009, but in 2011 had an unemployment rate under 5.5%.



Employment by Industry in Yellow Medicine County



Source: Minnesota Department of Employment and Economic Development, QCEW