

2012

2010 Census Community Data Brochure- City of Canby

Center for Small Towns (University of Minnesota, Morris)

Upper Minnesota Valley Regional Development Commission

Follow this and additional works at: <http://digitalcommons.morris.umn.edu/cst>

Recommended Citation

Center for Small Towns (University of Minnesota, Morris) and Upper Minnesota Valley Regional Development Commission, "2010 Census Community Data Brochure- City of Canby" (2012). *Center for Small Towns*. Book 47.
<http://digitalcommons.morris.umn.edu/cst/47>

This Book is brought to you for free and open access by University of Minnesota Morris Digital Well. It has been accepted for inclusion in Center for Small Towns by an authorized administrator of University of Minnesota Morris Digital Well. For more information, please contact skulann@morris.umn.edu.

Housing & School Enrollment

The data presented below includes statistics related to school enrollment and housing in the Region, including median home values, median rent, median monthly housing costs and vacancy rates for communities in the UMRVDC Region and the State of Minnesota.

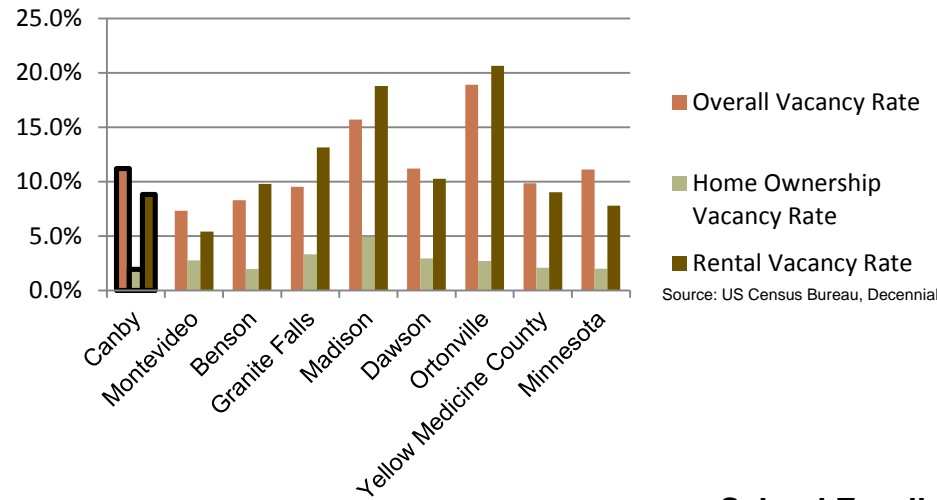
2010 Housing Statistics

City	Median Home Value	Median Rent	Median Monthly Housing Costs
Canby	\$64,500	\$384	\$848
Montevideo	\$84,600	\$547	\$978
Benson	\$101,000	\$451	\$1,026
Granite Falls	\$102,000	\$499	\$954
Madison	\$56,500	\$475	\$807
Dawson	\$68,600	\$444	\$785
Ortonville	\$78,400	\$441	\$800
Yellow-Medicine County	\$97,100	\$505	\$997
Minnesota	\$206,200	\$759	\$1,549

Source: US Census Bureau, ACS (2006-2010)

Both the median home value and median monthly housing costs for homeowners in Canby are below both Yellow Medicine County and the state of Minnesota, however they fall in the middle when compared to similar sized communities. Median monthly rent in Canby falls well below that of Yellow Medicine County, the state of Minnesota, and is the lowest among other similar sized communities in the Region.

2010 Vacancy Rates



Source: US Census Bureau, Decennial

Home ownership vacancy rate and rental vacancy rate are the proportion of the homeowner or rental inventory that is vacant "for sale" or vacant "for rent." The overall vacancy rate includes other vacancies such as vacant "sold - not occupied," seasonal housing and vacant "rented - not occupied." In 2010, the city of Canby had vacancy rates that were similar to other like-sized communities in the Region.

School Enrollment Since 1999

School District	1999-2000	2005-2006	2010-2011	% Change
Benson School District	1,216	1,050	970	-20.23%
Canby School District	766	581	522	-31.85%
Clinton-Graceville-Beardsley School District	565	434	377	-33.27%
Dawson-Boyd School District	681	544	517	-24.08%
Kerkhoven-Murdock-Sunburg School District	664	585	557	-16.11%
Lac qui Parle Valley School District	1,245	1,007	820	-34.14%
Lakeview School District	589	609	595	1.02%
M.A.C.C.R.A.Y. School District	986	790	674	-31.64%
Montevideo School District	1,599	1,459	1,342	-16.07%
Ortonville School District	717	530	527	-26.50%
Yellow Medicine East School District	1,299	1,081	862	-33.64%

Source: Minnesota Department of Education

The Canby School District, like other school districts in the region, has seen a steady decline in school enrollment over the last decade. The decline in enrollment is consistent with the declining and aging population in the Region. In addition to Canby Public Schools, St. Peter's Private School, with grades kindergarten through sixth, is also located in Canby.

UMVRDC staff developed the concept and design for the Community Profile Brochures and data was collected by students and staff from the Center for Small Towns at the University of Minnesota, Morris. All information was collected from trusted sources such as the U.S. Census Bureau, the American Community Survey, Minnesota Department of Employment & Economic Development (DEED), and the Minnesota Department of Education and is presumed to be accurate.



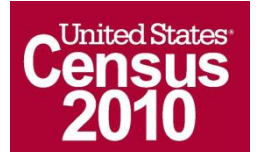
Helping Communities Prosper

2010 Census Data for Canby, Minnesota



This Community Profile Brochure is comprised of statistical information from a variety of sources and will provide a snapshot of historical and current demographic, economic and social trends in the Upper Minnesota Valley Region. The purpose is to provide a concise summary of key community statistics to aid decision making about community and economic development.

This statistical and informational profile was compiled by the UMRVDC in collaboration with The Center for Small Towns at the University of Minnesota, Morris for all five counties (Big Stone, Chippewa, Lac qui Parle, Swift and Yellow Medicine) and 37 cities in the Upper Minnesota Valley Region.



Demographics

The demographic profile below provides a snapshot of Canby and surrounding communities' historical, current and future population trends including population distribution and make up.

Comparison Historical Population from 1960 to 2010

City	1960	1970	1980	1990	2000	2010	% Change
Canby	2,146	2,147	2,143	1,826	1,903	1,795	-16.36%
Households	772	795	NA	805	842	792	2.59%
Average Household Size	2.78	2.70	NA	2.27	2.26	2.27	-18.47%
Montevideo	5,693	5,661	5,845	5,499	5,346	5,383	-5.45%
Benson	3,678	3,484	3,656	3,235	3,376	3,240	-11.91%
Granite Falls	2,165	2,582	2,666	3,083	3,070	2,897	33.81%
Madison	2,380	2,242	2,212	1,951	1,768	1,551	-34.83%
Dawson	1,766	1,699	1,901	1,626	1,539	1,540	-12.80%
Ortonville	2,671	2,663	2,548	2,205	2,158	1,795	-32.80%
Yellow Medicine County	15,523	14,415	13,653	11,684	11,080	10,438	-32.76%

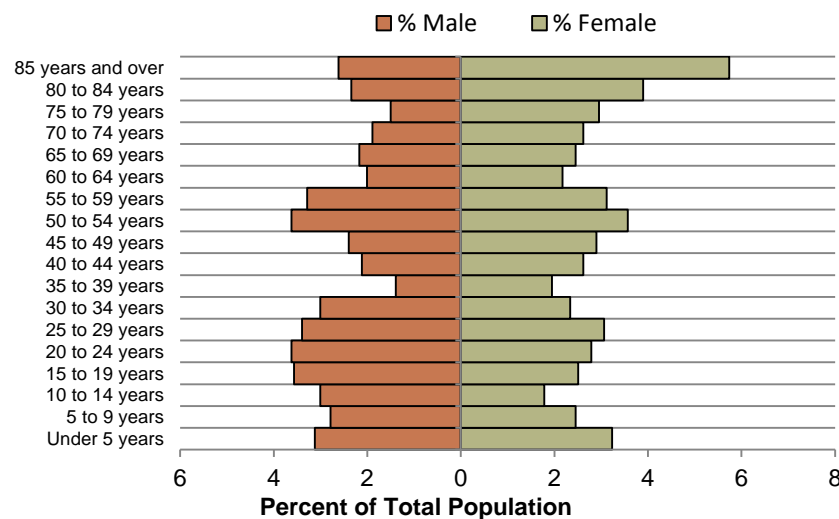
Source: US Census Bureau

Canby Population Projections

	2015	2020	2025	2030	2035	% Change
Canby	1,836	1,860	1,861	1,894	1,912	4.14%
Yellow Medicine County	9,980	9,970	9,720	9,660	9,600	-3.81%
UMVRDC Region	45,510	45,300	45,000	44,500	44,110	-3.08%

Source: Minnesota Demographic Center

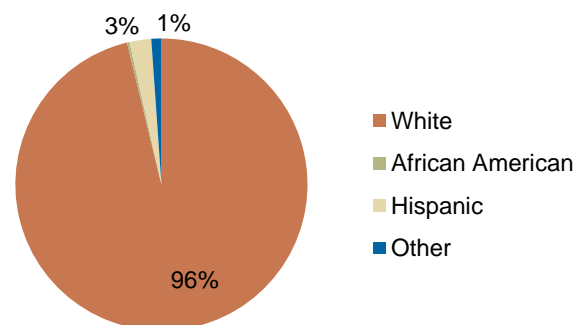
Canby Population Distribution, 2010



Source: U.S. Census Bureau, 2010

Canby has seen an overall decrease in population from 1960-2010. The community has experienced the largest population decrease (317 people) between 1980 and 1990. However, Canby is one of the few cities in the region where the population is projected to increase over the next few decades.

Race, 2010



Source: US Census Bureau, Decennial Census

The population distribution shows that there is a considerable percentage of the population between the ages of 15 and 30 years. Canby has a more even population distribution than many of the other communities within the Region. Canby has a 96% white population, which is typical for a community of its size.

Economic

The employment and industry data below represents a picture of the overall economic health of Canby and Yellow Medicine County. This data shows the diversity of the Region's economy.

Annual Median Household Income:

- City of Canby - \$42,989
- Big Stone - \$44,438
- Chippewa - \$44,712
- Lac qui Parle - \$48,269
- Swift - \$43,846
- Yellow Medicine - \$50,740
- UMVRDC Region - \$46,401
- Minnesota - \$57,243

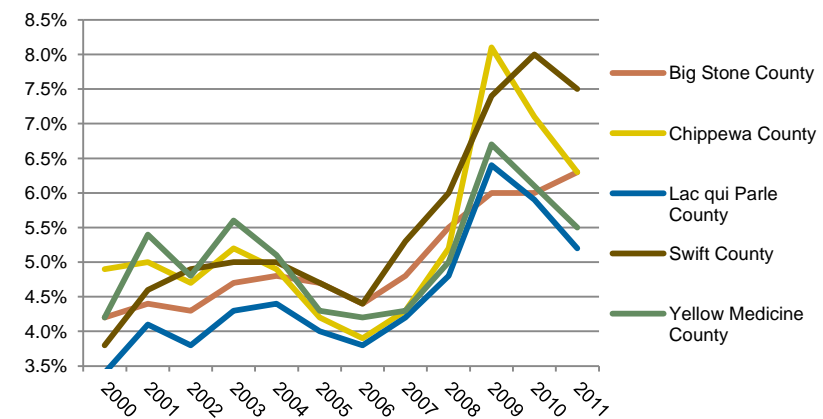
Source: 2007-2011 American Community Survey, U.S. Census Bureau

Types of Employment in Canby, 2011

Types of Industry	Number of Employees	Number of Firms	Total Wages	Average Weekly Wage
Education and Health Services	564	9	\$16,763,861	\$571
Trade, Transportation and Utilities	242	25	\$6,049,816	\$480
Leisure and Hospitality	77	7	\$620,620	\$154
Other Services	75	8	\$3,741,477	\$958
Financial Activities	24	7	\$895,123	\$724
Public Administration	23	2	\$589,405	\$517
Total, All Industries	1,057	75	\$29,667,244	\$540

Source: Minnesota Department of Employment and Economic Development, QCEW

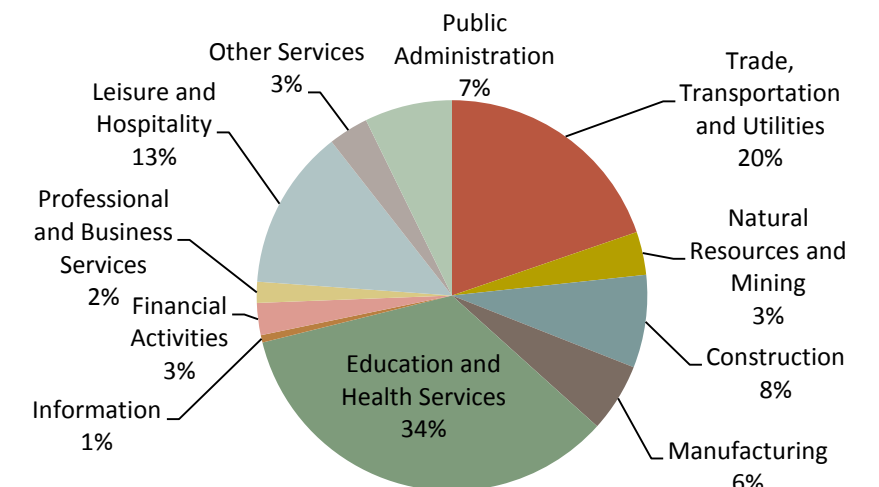
Unemployment Rates, 2000-2011



Source: Minnesota Department of Employment and Economic Development, LAUS

The employment categories shown in the table above and chart below show the 11 Super Sectors of Industry, which is the federal standard in data pertaining to business and industry. Much of the economic activity in Canby is in Education and Health Services. The pie chart below details that in Yellow Medicine County, just over one third of all employment comes from Education and Health Services. Yellow Medicine County had a slight increase in unemployment during the Recession of 2007 - 2009, but in 2011 had an unemployment rate under 5.5%.

Employment by Industry in Yellow Medicine County



Source: Minnesota Department of Employment and Economic Development, QCEW

