

2012

2010 Census Community Data Brochure- Yellow Medicine County

Center for Small Towns (University of Minnesota, Morris)

Upper Minnesota Valley Regional Development Commission

Follow this and additional works at: <http://digitalcommons.morris.umn.edu/cst>

Recommended Citation

Center for Small Towns (University of Minnesota, Morris) and Upper Minnesota Valley Regional Development Commission, "2010 Census Community Data Brochure- Yellow Medicine County" (2012). *Center for Small Towns*. Book 48.
<http://digitalcommons.morris.umn.edu/cst/48>

This Book is brought to you for free and open access by University of Minnesota Morris Digital Well. It has been accepted for inclusion in Center for Small Towns by an authorized administrator of University of Minnesota Morris Digital Well. For more information, please contact skulann@morris.umn.edu.

Housing & School Enrollment

The data presented below includes statistics related to school enrollment and housing in the Region, including median home values, median rent, median monthly housing costs and vacancy rates for counties in the UMRVDC Region and the State of Minnesota.

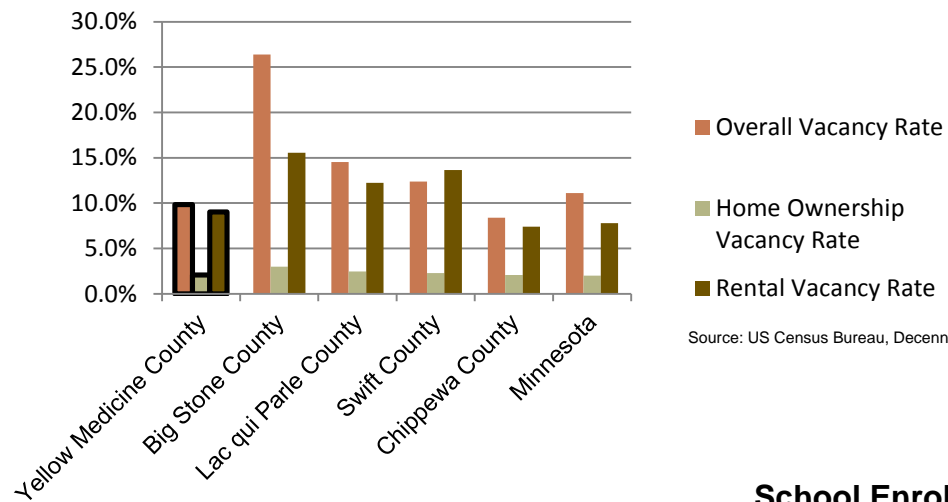
2010 Housing Statistics

| County | Median Home Value | Median Rent | Median Monthly Housing Costs |
|-------------------------------|-------------------|--------------|------------------------------|
| Yellow Medicine County | \$97,100 | \$505 | \$997 |
| Chippewa County | \$94,400 | \$542 | \$1,026 |
| Lac qui Parle County | \$77,100 | \$449 | \$868 |
| Swift County | \$97,600 | \$453 | \$1,024 |
| Big Stone County | \$81,900 | \$447 | \$924 |
| Minnesota | \$206,200 | \$759 | \$1,549 |

Source: US Census Bureau, ACS (2006-2010)

At \$97,100, the median home value in Yellow Medicine County is below that of the State of Minnesota, however it is one of the highest among surrounding counties. This trend continues for the median monthly housing costs for homeowners and renters, as housing costs in Yellow Medicine County are below the Minnesota average, but among the highest compared to surrounding counties in the Upper Minnesota Valley Region.

2010 Vacancy Rates



Source: US Census Bureau, Decennial

Home ownership vacancy rate and rental vacancy rate are the proportion of the homeowner or rental inventory that is vacant "for sale" or vacant "for rent." The overall vacancy rate includes other vacancies such as vacant "sold - not occupied," seasonal housing and vacant "rented - not occupied." In 2010, Yellow Medicine County had one of the lowest vacancy rates among surrounding counties.

School Enrollment Since 1999

| School District | 1999-2000 | 2005-2006 | 2010-2011 | % Change |
|--|--------------|--------------|------------|----------------|
| Benson School District | 1,216 | 1,050 | 970 | -20.23% |
| Canby School District | 766 | 581 | 522 | -31.85% |
| Clinton-Graceville-Beardsley School District | 565 | 434 | 377 | -33.27% |
| Dawson-Boyd School District | 681 | 544 | 517 | -24.08% |
| Kerkhoven-Murdock-Sunburg School District | 664 | 585 | 557 | -16.11% |
| Lac qui Parle Valley School District | 1,245 | 1,007 | 820 | -34.14% |
| Lakeview School District | 589 | 609 | 595 | 1.02% |
| M.A.C.C.R.A.Y. School District | 986 | 790 | 674 | -31.64% |
| Montevideo School District | 1,599 | 1,459 | 1,342 | -16.07% |
| Ortonville School District | 717 | 530 | 527 | -26.50% |
| Yellow Medicine East School District | 1,299 | 1,081 | 862 | -33.64% |

Source: Minnesota Department of Education

Most of the school districts in Yellow Medicine County have seen a steady decline in school enrollment over the last decade with the exception of Lakeview School District. The decline in school enrollment is consistent with the declining and aging population in the Region. In addition to the public school districts listed to the right, there are also two charter schools in Yellow Medicine County: Echo Charter School with a 2010-2011 enrollment of 193 and Clarkfield Charter school with 2011-2012 enrollment of 75.

UMVRDC staff developed the concept and design for the Community Profile Brochures and data was collected by students and staff from the Center for Small Towns at the University of Minnesota, Morris. All information was collected from trusted sources such as the U.S. Census Bureau, the American Community Survey, Minnesota Department of Employment & Economic Development (DEED), and the Minnesota Department of Education and is presumed to be accurate.



2010 Census Data for Yellow Medicine County, Minnesota



This Community Profile Brochure is comprised of statistical information from a variety of sources and will provide a snapshot of historical and current demographic, economic and social trends in the Upper Minnesota Valley Region. The purpose is to provide a concise summary of key community statistics to aid decision making about community and economic development.

This statistical and informational profile was compiled by the UMRVDC in collaboration with The Center for Small Towns at the University of Minnesota, Morris for all five counties (Big Stone, Chippewa, Lac qui Parle, Swift and Yellow Medicine) and 37 cities in the Upper Minnesota Valley Region.



Demographics

The demographic profile below is a snapshot of historical, current and future population trends including population distribution and make up.

Comparison Historical Population from 1960 to 2010

| County | 1960 | 1970 | 1980 | 1990 | 2000 | 2010 | % Change |
|-------------------------------|---------------|---------------|---------------|---------------|---------------|---------------|----------------|
| Yellow Medicine County | 15,523 | 14,415 | 13,653 | 11,684 | 11,080 | 10,438 | -32.76% |
| Households | 4,647 | 4,565 | 4,991 | 4,607 | 4,439 | 4,292 | -7.64% |
| Average Household Size | 3.34 | 3.16 | 2.65 | 2.54 | 2.50 | 2.43 | -27.20% |
| Chippewa County | 16,320 | 15,109 | 14,941 | 13,228 | 13,088 | 12,441 | -23.77% |
| Lac qui Parle County | 13,330 | 11,164 | 10,592 | 8,924 | 8,067 | 7,259 | -45.54% |
| Swift County | 14,936 | 13,177 | 12,920 | 10,724 | 11,956 | 9,783 | -34.50% |
| Big Stone County | 8,954 | 7,941 | 7,716 | 6,285 | 5,820 | 5,269 | -41.15% |

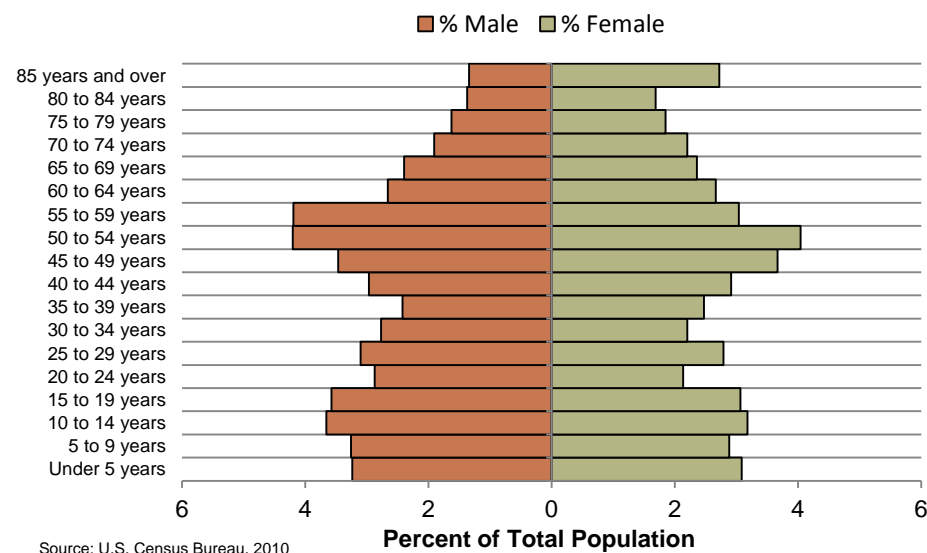
Source: US Census Bureau

UMVRDC Regional Population Projections

| | 2015 | 2020 | 2025 | 2030 | 2035 | % Change |
|-------------------------------|--------------|--------------|--------------|--------------|--------------|---------------|
| Yellow Medicine County | 9,980 | 9,970 | 9,720 | 9,660 | 9,600 | -3.81% |
| Big Stone County | 5,190 | 5,160 | 5,160 | 5,110 | 5,060 | -2.50% |
| Chippewa County | 12,890 | 13,040 | 13,200 | 13,130 | 13,130 | 1.86% |
| Lac qui Parle County | 6,940 | 6,830 | 6,770 | 6,640 | 6,520 | -6.05% |
| Swift County | 10,510 | 10,300 | 10,150 | 9,960 | 9,800 | -6.76% |
| UMVRDC Region | 45,510 | 45,300 | 45,000 | 44,500 | 44,110 | -3.08% |

Source: US Census Bureau

Yellow Medicine County Population Distribution, 2010

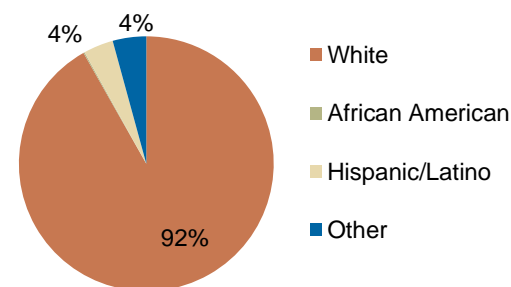


Source: U.S. Census Bureau, 2010 Decennial Census

Yellow Medicine County has nearly an entirely white population, which is typical for counties made up of small rural communities. However, the Upper Sioux Community is located in Yellow Medicine County and about 3% of all residents in the county identify as American Indian or Alaska Native. This population is included in the "other" category in the chart to the right.

Yellow Medicine County has seen an overall decrease in population from 1960-2010, with the greatest decrease between 1980 and 1990. The decrease has been steady over the past twenty years with the county losing approximately 1,000 people per decade, on average. The population is projected to decrease over the next few decades, however less dramatically than in the past. The population distribution shows that the county has a large aging community with a large percentage between the ages of 50 and 60 years.

Race, 2010



Source: US Census Bureau, Decennial Census

Economic

The employment and industry data below represents a picture of the overall economic health of the Region and Yellow Medicine County. This data shows the diversity of Yellow Medicine County's economy.

Types of Employment in Yellow Medicine County, 2011

| Types of Industry | Number of Employees | Number of Firms | Total Wages | Average Weekly Wage |
|-------------------------------------|---------------------|-----------------|----------------------|---------------------|
| Education and Health Services | 1,467 | 39 | \$45,858,627 | \$601 |
| Trade, Transportation and Utilities | 840 | 100 | \$27,213,916 | \$622 |
| Leisure and Hospitality | 566 | 28 | \$10,872,209 | \$368 |
| Construction | 327 | 47 | \$18,656,226 | \$1,088 |
| Public Administration | 309 | 23 | \$9,748,975 | \$606 |
| Manufacturing | 242 | 19 | \$7,633,179 | \$605 |
| Natural Resources and Mining | 152 | 16 | \$6,203,172 | \$785 |
| Other Services | 141 | 30 | \$4,994,984 | \$682 |
| Financial Activities | 113 | 23 | \$4,519,920 | \$767 |
| Professional and Business Services | 74 | 26 | \$2,523,948 | \$654 |
| Information | 26 | 6 | \$1,076,548 | \$794 |
| Total, All Industries | 4,259 | 356 | \$139,301,704 | \$628 |

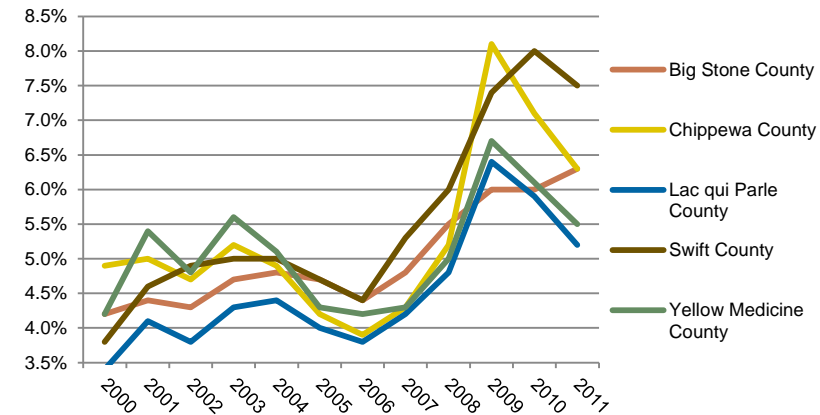
Source: Minnesota Department of Employment and Economic Development, QCEW

Annual Median Household Income:

- Big Stone - \$44,438
- Chippewa - \$44,712
- Lac qui Parle - \$48,269
- Swift - \$43,846
- **Yellow Medicine - \$50,740**
- UMRDC Region - \$46,401
- Minnesota - \$57,243

Source: 2007-2011 American Community Survey, U.S. Census Bureau

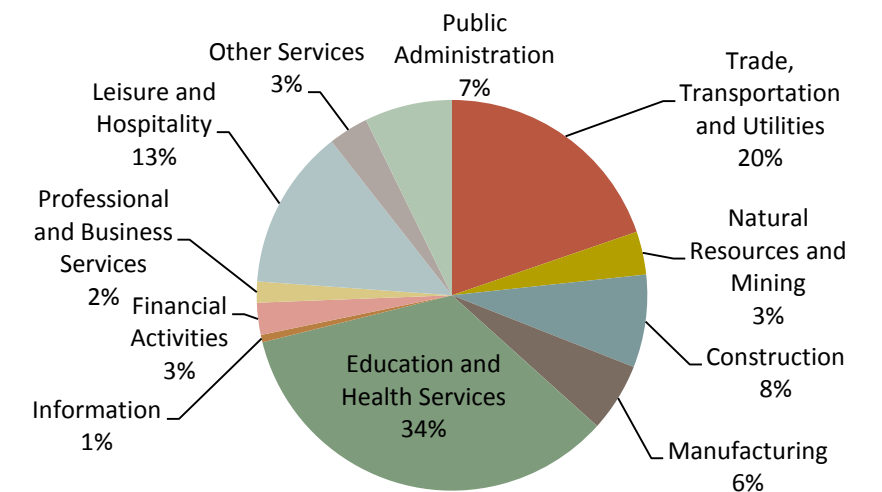
Unemployment Rates, 2000-2011



Source: Minnesota Department of Employment and Economic Development, LAUS

The employment categories shown in the table above and the chart below show the 11 Super Sectors of Industry, which is the federal standard in data pertaining to business and industry. Education and Health Services is the largest employment sector and also makes up a large portion of the economic activity in the county. The pie chart below shows that Trade, Transportation and Utilities as well as the category of Leisure and Hospitality are the other two large industry employers in Yellow Medicine County. Yellow Medicine County had a slight increase in unemployment during the Recession of 2007 to 2009, but in 2011 had an unemployment rate under 5.5%. Which is lower than the 2011 annual average unemployment rates of the State of Minnesota and the nation at 6.4% and 8.9% respectively.

Employment by Industry in Yellow Medicine County



Source: Minnesota Department of Employment and Economic Development, QCEW

