

2012

# 2010 Census Community Data Brochure- City of Dawson

Center for Small Towns (University of Minnesota, Morris)

Upper Minnesota Valley Regional Development Commission

Follow this and additional works at: <http://digitalcommons.morris.umn.edu/cst>

---

## Recommended Citation

Center for Small Towns (University of Minnesota, Morris) and Upper Minnesota Valley Regional Development Commission, "2010 Census Community Data Brochure- City of Dawson" (2012). *Center for Small Towns*. Book 36.  
<http://digitalcommons.morris.umn.edu/cst/36>

This Book is brought to you for free and open access by University of Minnesota Morris Digital Well. It has been accepted for inclusion in Center for Small Towns by an authorized administrator of University of Minnesota Morris Digital Well. For more information, please contact [skulann@morris.umn.edu](mailto:skulann@morris.umn.edu).

# Housing & School Enrollment

The data presented below includes statistics related to school enrollment and housing in the Region, including median home values, median rent, median monthly housing costs and vacancy rates for communities in the UMRVDC Region and the State of Minnesota.

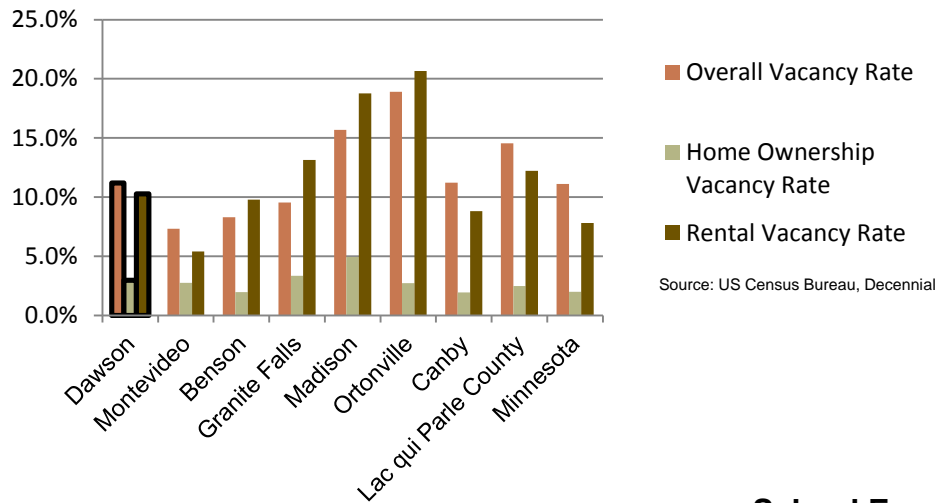
## 2010 Housing Statistics

City	Median Home Value	Median Rent	Median Monthly Housing Costs
<b>Dawson</b>	<b>\$68,600</b>	<b>\$444</b>	<b>\$785</b>
Montevideo	\$84,600	\$547	\$978
Benson	\$101,000	\$451	\$1,026
Granite Falls	\$102,000	\$499	\$954
Madison	\$56,500	\$475	\$807
Ortonville	\$78,400	\$441	\$800
Canby	\$64,500	\$384	\$848
Lac qui Parle County	\$77,100	\$449	\$868
Minnesota	\$206,200	\$759	\$1,549

Source: US Census Bureau, ACS (2006-2010)

The median home value in Dawson falls below those in the Region's largest cities, however it is more comparable to other similar sized communities in the Region. The median monthly housing costs for homeowners in Dawson is the lowest among similar sized communities in the region, but the median monthly rent falls in the middle.

## 2010 Vacancy Rates



Source: US Census Bureau, Decennial

Home ownership vacancy rate and rental vacancy rate are the proportion of the homeowner or rental inventory that is vacant "for sale" or vacant "for rent." The overall vacancy rate includes other vacancies such as vacant "sold - not occupied," seasonal housing and vacant "rented - not occupied." In 2010, the city of Dawson had vacancy rates comparable to other like sized communities.

## School Enrollment Since 1999

School District	1999-2000	2005-2006	2010-2011	% Change
Benson School District	1,216	1,050	970	-20.23%
Canby School District	766	581	522	-31.85%
Clinton-Graceville-Beardsley School District	565	434	377	-33.27%
<b>Dawson-Boyd School District</b>	<b>681</b>	<b>544</b>	<b>517</b>	<b>-24.08%</b>
Kerkhoven-Murdock-Sunburg School District	664	585	557	-16.11%
Lac qui Parle Valley School District	1,245	1,007	820	-34.14%
Lakeview School District	589	609	595	1.02%
M.A.C.C.R.A.Y. School District	986	790	674	-31.64%
Montevideo School District	1,599	1,459	1,342	-16.07%
Ortonville School District	717	530	527	-26.50%
Yellow Medicine East School District	1,299	1,081	862	-33.64%

Source: Minnesota Department of Education

Dawson is part of the Dawson-Boyd School District, which, like most school districts in the Region, has seen a steady decline in school enrollment over the last decade. The decline in enrollment is consistent with the declining and aging population in the Region. Note that data was only available for public school districts.

UMVRDC staff developed the concept and design for the Community Profile Brochures and data was collected by students and staff from the Center for Small Towns at the University of Minnesota, Morris. All information was collected from trusted sources such as the U.S. Census Bureau, the American Community Survey, Minnesota Department of Employment & Economic Development (DEED), and the Minnesota Department of Education and is presumed to be accurate.



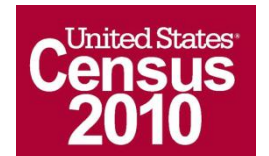
Helping Communities Prosper

# 2010 Census Data for Dawson, Minnesota



This Community Profile Brochure is comprised of statistical information from a variety of sources and will provide a snapshot of historical and current demographic, economic and social trends in the Upper Minnesota Valley Region. The purpose is to provide a concise summary of key community statistics to aid decision making about community and economic development.

This statistical and informational profile was compiled by the UMRVDC in collaboration with The Center for Small Towns at the University of Minnesota, Morris for all five counties (Big Stone, Chippewa, Lac qui Parle, Swift and Yellow Medicine) and 37 cities in the Upper Minnesota Valley Region.



# Demographics

The demographic profile below provides a snapshot of Dawson and surrounding communities' historical, current and future population trends including population distribution and make up.

## Comparison Historical Population from 1960 to 2010

City	1960	1970	1980	1990	2000	2010	% Change
<b>Dawson</b>	<b>1,766</b>	<b>1,699</b>	<b>1,901</b>	<b>1,626</b>	<b>1,539</b>	<b>1,540</b>	<b>-12.80%</b>
Households	609	626	NA	682	677	682	11.99%
Average Household Size	2.90	2.71	NA	2.38	2.27	2.26	-22.13%
Montevideo	5,693	5,661	5,845	5,499	5,346	5,383	-5.45%
Benson	3,678	3,484	3,656	3,235	3,376	3,240	-11.91%
Granite Falls	2,165	2,582	2,666	3,083	3,070	2,897	33.81%
Madison	2,380	2,242	2,212	1,951	1,768	1,551	-34.83%
Ortonville	2,671	2,663	2,548	2,205	2,158	1,916	-28.27%
Canby	2,146	2,147	2,143	1,826	1,903	1,795	-16.36%
Lac qui Parle County	13,330	11,164	10,592	8,924	8,067	7,259	-45.54%

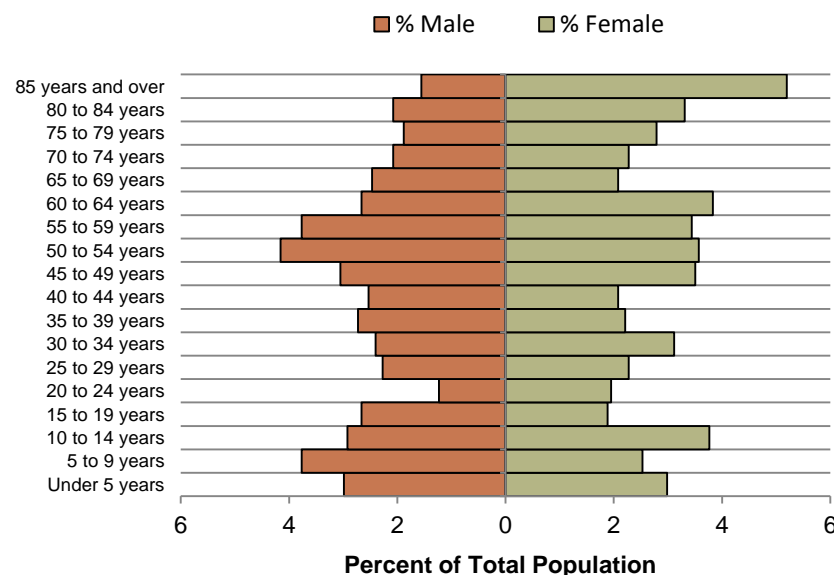
Source: US Census Bureau

## Dawson Population Projections

	2015	2020	2025	2030	2035	% Change
<b>Dawson</b>	<b>1,379</b>	<b>1,371</b>	<b>1,371</b>	<b>1,362</b>	<b>1,350</b>	<b>-2.10%</b>
Lac qui Parle County	6,940	6,830	6,770	6,640	6,520	-6.05%
UMVRDC Region	45,510	45,300	45,000	44,500	44,110	-3.08%

Source: Minnesota Demographic Center

## Dawson Population Distribution, 2010

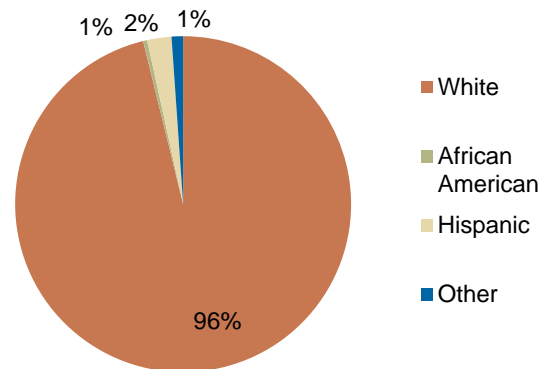


Source: U.S. Census Bureau, 2010

The population distribution shows that there is a high percentage of the population in the older, female aged cohorts, with few people falling into the 20-30 aged cohorts. Dawson has nearly an all white population, which is typical for a community of this size.

Dawson has seen an overall decrease in population of nearly 13% from 1960 - 2010. The population growth however, was flat over the past decade and the rate of decline was less than that of many other like-sized communities in the Region. Dawson's population is projected to continue to decrease over the next few decades, although less dramatically than it has in the past.

## Race, 2010



Source: US Census Bureau, Decennial Census

# Economic

The employment and industry data below represents a picture of the overall economic health of Dawson and Lac qui Parle County. This data shows the diversity of the Region's economy.

## Annual Median Household Income:

- City of Dawson - \$40,333
- Big Stone - \$44,438
- Chippewa - \$44,712
- Lac qui Parle - \$48,269
- Swift - \$43,846
- Yellow Medicine - \$50,740
- UMVRDC Region - \$46,401
- Minnesota - \$57,243

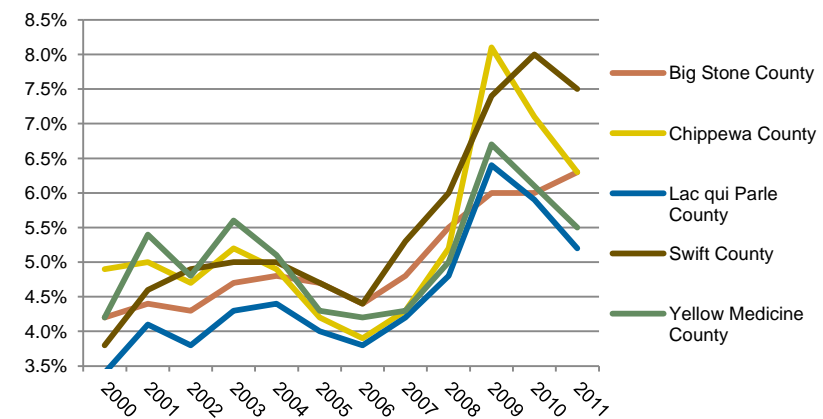
Source: 2007-2011 American Community Survey, U.S. Census Bureau

## Types of Employment in Dawson, 2011

Types of Industry	Number of Employees	Number of Firms	Total Wages	Average Weekly Wage
Education and Health Services	364	7	\$11,019,460	\$582
Trade, Transportation and Utilities	162	23	\$4,305,857	\$509
Financial Activities	42	13	\$1,241,618	\$569
Public Administration	28	1	\$630,937	\$432
<b>Total, All Industries</b>	<b>750</b>	<b>66</b>	<b>\$21,857,532</b>	<b>\$560</b>

Source: Minnesota Department of Employment and Economic Development, QCEW

## Unemployment Rates, 2000-2011

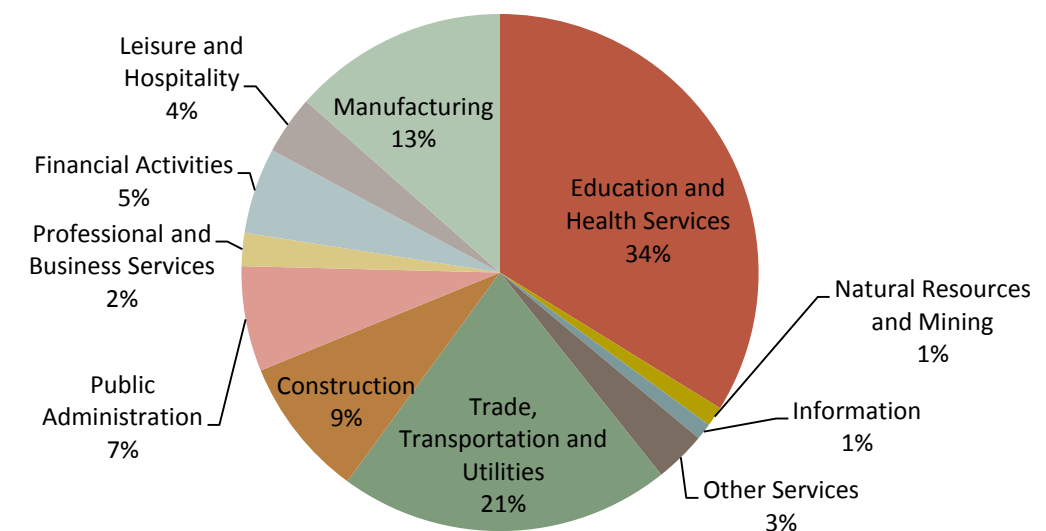


Source: Minnesota Department of Employment and Economic Development, LAUS

The employment categories shown in the table above and chart below show the 11 Super Sectors of Industry, which is the federal standard in data pertaining to business and industry. Much of the economic activity in Dawson is in Education and Health Services. The pie chart below details that in Lac qui Parle County, just over one third of all employment comes from Education and Health Services. Lac qui Parle County had a slight increase in unemployment during the Recession of 2007 - 2009, but in 2011 had an unemployment rate under 5.5%.



## Employment by Industry in Lac qui Parle County, 2011



Source: Minnesota Department of Employment and Economic Development, QCEW