

2012

2010 Census Community Data Brochure- City of Ortonville

Center for Small Towns (University of Minnesota, Morris)

Upper Minnesota Valley Regional Development Commission

Follow this and additional works at: <http://digitalcommons.morris.umn.edu/cst>

Recommended Citation

Center for Small Towns (University of Minnesota, Morris) and Upper Minnesota Valley Regional Development Commission, "2010 Census Community Data Brochure- City of Ortonville" (2012). *Center for Small Towns*. Book 24.
<http://digitalcommons.morris.umn.edu/cst/24>

This Book is brought to you for free and open access by University of Minnesota Morris Digital Well. It has been accepted for inclusion in Center for Small Towns by an authorized administrator of University of Minnesota Morris Digital Well. For more information, please contact skulann@morris.umn.edu.

Housing & School Enrollment

The data presented below includes statistics related to school enrollment and housing in the Region, including median home values, median rent, median monthly housing costs and vacancy rates for communities in the UMRVDC Region and the State of Minnesota.

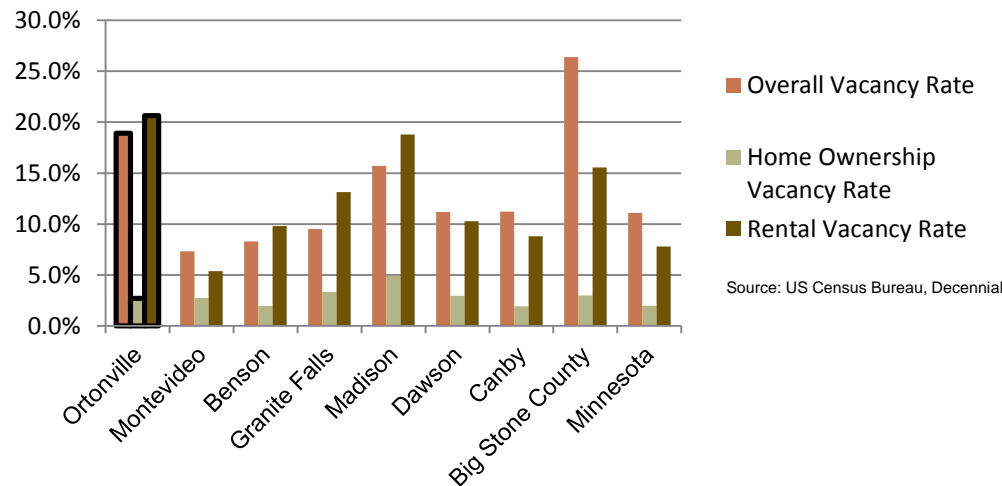
2010 Housing Statistics

City	Median Home Value	Median Rent	Median Monthly Housing Costs
Ortonville	\$78,400	\$441	\$800
Montevideo	\$84,600	\$547	\$978
Benson	\$101,000	\$451	\$1,026
Granite Falls	\$102,000	\$499	\$954
Madison	\$56,500	\$475	\$807
Dawson	\$68,600	\$444	\$785
Canby	\$64,500	\$384	\$848
Big Stone County	\$81,900	\$447	\$924
Minnesota	\$206,200	\$759	\$1,549

Source: US Census Bureau, ACS (2006-2010)

The median home value in Ortonville is below that of both Big Stone County and the State of Minnesota, however it falls in the middle for median home values in similar sized communities within the Region. This trend continues for median monthly rent and median monthly housing costs for homeowners in Ortonville, which are less than those in Big Stone County and the State of Minnesota, but similar to other like-sized communities in the Region.

2010 Vacancy Rates



Source: US Census Bureau, Decennial

Home ownership vacancy rate and rental vacancy rate are the proportion of the homeowner or rental inventory that is vacant "for sale" or vacant "for rent." The overall vacancy rate includes other vacancies such as vacant "sold - not occupied," seasonal housing and vacant "rented - not occupied." In 2010, the city of Ortonville had the highest vacancy rates among similar sized communities, especially rental vacancy rates.

School Enrollment Since 1999

School District	1999-2000	2005-2006	2010-2011	% Change
Benson School District	1,216	1,050	970	-20.23%
Canby School District	766	581	522	-31.85%
Clinton-Graceville-Beardsley School District	565	434	377	-33.27%
Dawson-Boyd School District	681	544	517	-24.08%
Kerkhoven-Murdock-Sunburg School District	664	585	557	-16.11%
Lac qui Parle Valley School District	1,245	1,007	820	-34.14%
Lakeview School District	589	609	595	1.02%
M.A.C.C.R.A.Y. School District	986	790	674	-31.64%
Montevideo School District	1,599	1,459	1,342	-16.07%
Ortonville School District	717	530	527	-26.50%
Yellow Medicine East School District	1,299	1,081	862	-33.64%

Source: Minnesota Department of Education

Ortonville School District, like many of the school districts in the Region, has seen a dramatic decline in school enrollment in recent years. However, the decline in enrollment is consistent with the declining and aging population in the Region. Note that data was only available for public school districts.

UMVRDC staff developed the concept and design for the Community Profile Brochures and data was collected by students and staff from the Center for Small Towns at the University of Minnesota, Morris. All information was collected from trusted sources such as the U.S. Census Bureau, the American Community Survey, Minnesota Department of Employment & Economic Development (DEED), and the Minnesota Department of Education and is presumed to be accurate.



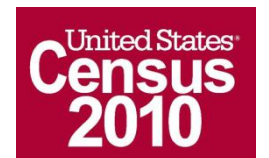
Helping Communities Prosper

2010 Census Data for Ortonville, Minnesota



This Community Profile Brochure is comprised of statistical information from a variety of sources and will provide a snapshot of historical and current demographic, economic and social trends in the Upper Minnesota Valley Region. The purpose is to provide a concise summary of key community statistics to aid decision making about community and economic development.

This statistical and informational profile was compiled by the UMRVDC in collaboration with The Center for Small Towns at the University of Minnesota, Morris for all five counties (Big Stone, Chippewa, Lac qui Parle, Swift and Yellow Medicine) and 37 cities in the Upper Minnesota Valley Region.



Upper Minnesota Valley
REGIONAL DEVELOPMENT COMMISSION
Helping Communities Prosper

323 W. Schlieman Ave. Appleton, MN 56208 320.289.1981 www.umvrdc.org

For more information, or if you have questions, please visit our website: www.umvrdc.org.

Demographics

The demographic profile below provides a snapshot of Ortonville and surrounding communities' historical, current and future population trends including population distribution and make up.

Comparison Historical Population from 1960 to 2010

City	1960	1970	1980	1990	2000	2010	% Change
Ortonville	2,836	2,841	2,550	2,205	2,158	1,916	-32.44%
Households	912	982	NA	944	923	884	-3.07%
Average Household Size	3.11	2.89	NA	2.34	2.34	2.17	-30.23%
Montevideo	5,693	5,661	5,845	5,499	5,346	5,383	-5.45%
Benson	3,678	3,484	3,656	3,235	3,376	3,240	-11.91%
Granite Falls	2,728	3,225	3,451	3,083	3,070	2,897	6.20%
Madison	2,380	2,242	2,212	1,951	1,768	1,551	-34.83%
Dawson	1,766	1,699	1,901	1,626	1,539	1,540	-12.80%
Canby	2,146	2,147	2,143	1,826	1,903	1,795	-16.36%
Big Stone County	8,954	7,941	7,716	6,285	5,820	5,269	-41.15%

Source: US Census Bureau

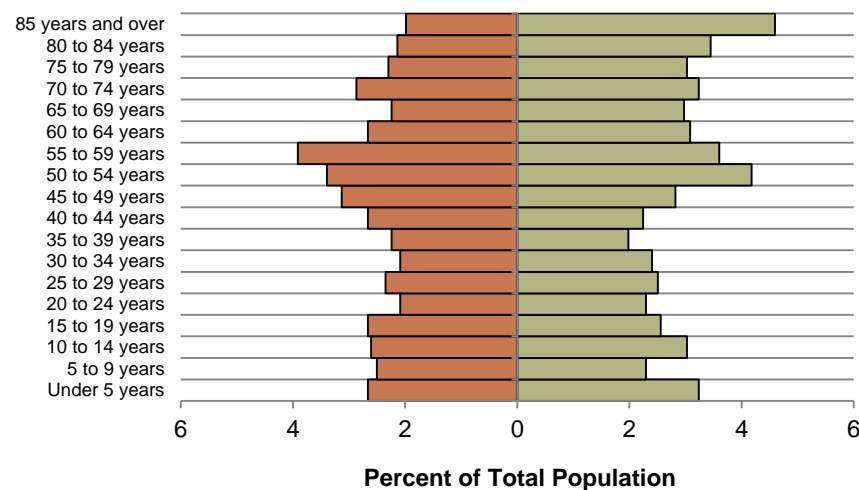
Ortonville Population Projections

	2015	2020	2025	2030	2035	% Change
Ortonville	1,850	1,841	1,839	1,820	1,800	-2.70%
Big Stone County	5,190	5,160	5,160	5,110	5,060	-2.50%
UMVRDC Region	45,510	45,300	45,000	44,500	44,110	-3.08%

Source: Minnesota Demographic Center

Ortonville Population Distribution, 2010

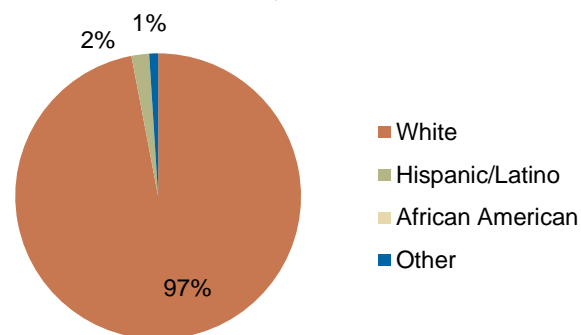
■ % Male ■ % Female



Source: U.S. Census Bureau, 2010

The population distribution shows that Ortonville is an aging community with a large percentage of the population above the age of 50 years. Ortonville has nearly an all white population, which is typical for a community of its size.

Race, 2010



Source: US Census Bureau, Decennial Census

Economic

The employment and industry data below represents a picture of the overall economic health of Ortonville and Big Stone County. This data shows the diversity of the Region's economy.

Annual Median Household Income:

- City of Ortonville - \$40,969
- Big Stone - \$44,438
- Chippewa - \$44,712
- Lac qui Parle - \$48,269
- Swift - \$43,846
- Yellow Medicine - \$50,740
- UMVRDC Region - \$46,401
- Minnesota - \$57,243

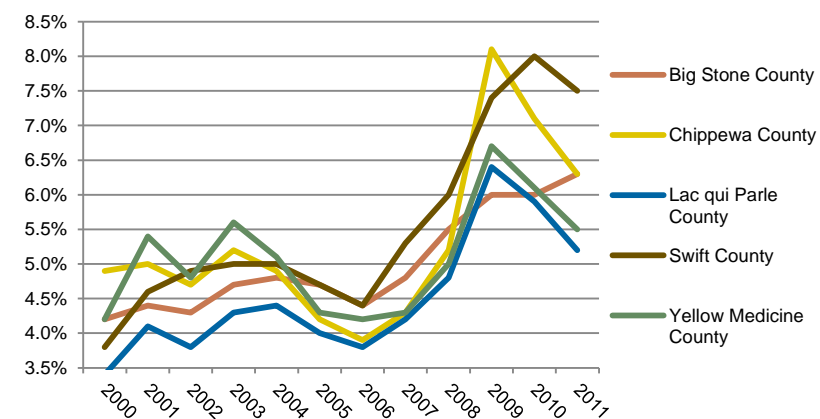
Source: 2007-2011 American Community Survey, U.S. Census Bureau

Types of Employment in Ortonville, 2011

Types of Industry	Number of Employees	Number of Firms	Total Wages	Average Weekly Wage
Education and Health Services	557	13	\$18,800,940	\$649
Trade, Transportation and Utilities	156	21	\$2,858,848	\$352
Public Administration	147	11	\$5,419,694	\$717
Leisure and Hospitality	103	10	\$593,757	\$110
Construction	84	12	\$2,734,590	\$621
Professional and Business Services	42	11	\$743,336	\$348
Other Services	33	12	\$524,663	\$305
Manufacturing	30	4	\$788,539	\$509
Total, All Industries	1,207	108	\$33,761,671	\$538

Source: Minnesota Department of Employment and Economic Development, QCEW

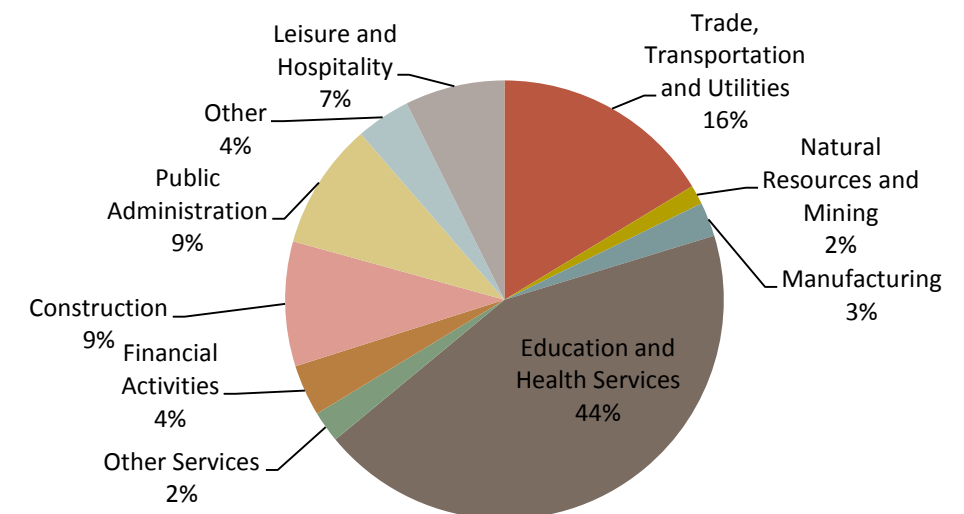
Unemployment Rates, 2000-2011



Source: Minnesota Department of Employment and Economic Development, LAUS

The employment categories shown in the table above and chart below show the 11 Super Sectors of Industry, which is the federal standard in data pertaining to business and industry. Much of the economic activity in Ortonville is in Education and Health Services. This concentration within Ortonville extends into the industry breakdown for Big Stone County in the pie chart below. Nearly half of all county employment in the 11 Super Sectors comes from Education and Health Services. Big Stone County had a slight increase in unemployment during the Recession of 2007-2009, but in 2011 maintained an unemployment rate under 6.5%.

Employment by Industry in Big Stone County, 2011



Source: Minnesota Department of Employment and Economic Development QCEW

