

2012

# 2010 Census Community Data Brochure- City of Odessa

Center for Small Towns (University of Minnesota, Morris)

Upper Minnesota Valley Regional Development Commission

Follow this and additional works at: <http://digitalcommons.morris.umn.edu/cst>

---

## Recommended Citation

Center for Small Towns (University of Minnesota, Morris) and Upper Minnesota Valley Regional Development Commission, "2010 Census Community Data Brochure- City of Odessa" (2012). *Center for Small Towns*. Book 25.  
<http://digitalcommons.morris.umn.edu/cst/25>

This Book is brought to you for free and open access by University of Minnesota Morris Digital Well. It has been accepted for inclusion in Center for Small Towns by an authorized administrator of University of Minnesota Morris Digital Well. For more information, please contact [skulann@morris.umn.edu](mailto:skulann@morris.umn.edu).

# Housing & School Enrollment

The data presented below includes statistics related to school enrollment and housing in the Region, including median home values, median rent, median monthly housing costs and vacancy rates for communities in the UMRVDC Region and the State of Minnesota.

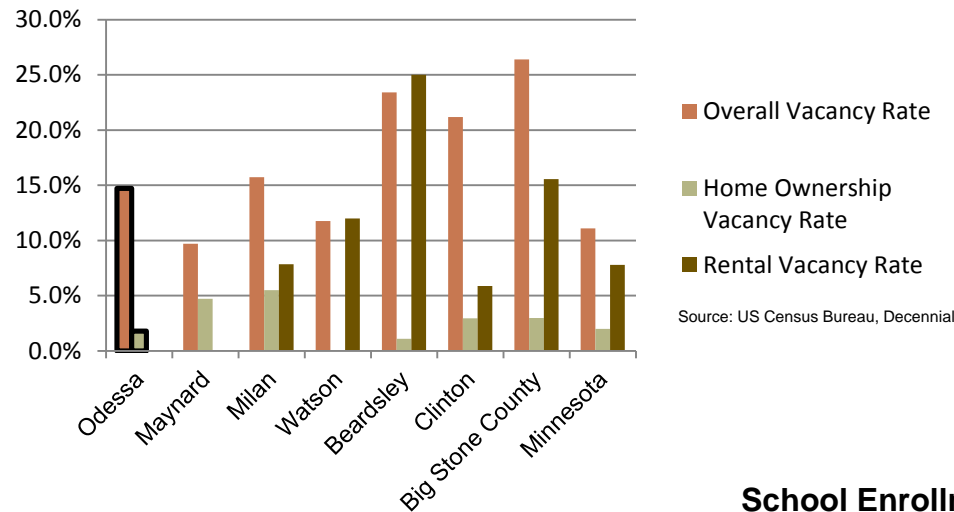
## 2010 Housing Statistics

City	Median Home Value	Median Rent	Median Monthly Housing Costs
<b>Odessa</b>	<b>\$42,500</b>	<b>N/A</b>	<b>\$633</b>
Clontarf	\$81,900	\$310	\$582
Bellingham	\$36,900	N/A	\$917
DeGraff	\$38,400	N/A	\$600
Watson	\$58,500	\$431	\$952
Beardsley	\$47,700	\$283	\$914
Clinton	\$46,300	\$334	\$655
Big Stone County	\$81,900	\$447	\$924
Minnesota	\$206,200	\$759	\$1,549

Source: US Census Bureau, ACS (2006-2010)

The median home value in the city of Odessa is below the median home values for both Big Stone County and the state of Minnesota. However, it falls in the middle compared to similar sized communities in the Region. Odessa's median monthly housing costs for homeowners however, are less than many of the similar sized communities in the Region. Median rents are not publicly available for the city of Odessa due to confidentiality laws. This is common in small communities with few housing units.

## 2010 Vacancy Rates



Source: US Census Bureau, Decennial

Home ownership vacancy rate and rental vacancy rate are the proportion of the homeowner or rental inventory that is vacant "for sale" or vacant "for rent." The overall vacancy rate includes other vacancies such as vacant "sold - not occupied," seasonal housing and vacant "rented - not occupied." In 2010, the city of Odessa had similar vacancy rates compared to other similar sized communities.

## School Enrollment Since 1999

School District	1999-2000	2005-2006	2010-2011	% Change
Benson School District	1,216	1,050	970	-20.23%
Canby School District	766	581	522	-31.85%
Clinton-Graceville-Beardsley School District	565	434	377	-33.27%
Dawson-Boyd School District	681	544	517	-24.08%
Kerkhoven-Murdock-Sunburg School District	664	585	557	-16.11%
Lac qui Parle Valley School District	1,245	1,007	820	-34.14%
Lakeview School District	589	609	595	1.02%
M.A.C.C.R.A.Y. School District	986	790	674	-31.64%
Montevideo School District	1,599	1,459	1,342	-16.07%
<b>Ortonville School District</b>	<b>717</b>	<b>530</b>	<b>527</b>	<b>-26.50%</b>
Yellow Medicine East School District	1,299	1,081	862	-33.64%

Source: Minnesota Department of Education

Odessa is part of the Ortonville School District, which like many of the school districts in the Region, has seen a decline in enrollment in recent years. The table shows that enrollment has decreased by over 25 percent in the past decade, however that is less than many other surrounding school districts. The decline in enrollment is consistent with the declining and aging population in Big Stone County and the entire Region. Note that data was only available for public school districts.

UMVRDC staff developed the concept and design for the Community Profile Brochures and data was collected by students and staff from the Center for Small Towns at the University of Minnesota, Morris. All information was collected from trusted sources such as the U.S. Census Bureau, the American Community Survey, Minnesota Department of Employment & Economic Development (DEED), and the Minnesota Department of Education and is presumed to be accurate.



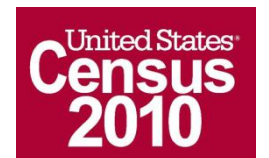
Helping Communities Prosper

# 2010 Census Data for Odessa, Minnesota



This Community Profile Brochure is comprised of statistical information from a variety of sources and will provide a snapshot of historical and current demographic, economic and social trends in the Upper Minnesota Valley Region. The purpose is to provide a concise summary of key community statistics to aid decision making about community and economic development.

This statistical and informational profile was compiled by the UMRVDC in collaboration with The Center for Small Towns at the University of Minnesota, Morris for all five counties (Big Stone, Chippewa, Lac qui Parle, Swift and Yellow Medicine) and 37 cities in the Upper Minnesota Valley Region.



# Demographics

The demographic profile below provides a snapshot of Odessa and surrounding communities' historical, current and future population trends including population distribution and make up.

## Comparison Historical Population from 1960 to 2010

City	1960	1970	1980	1990	2000	2010	% Change
<b>Odessa</b>	<b>234</b>	<b>194</b>	<b>177</b>	<b>155</b>	<b>113</b>	<b>135</b>	<b>-42.31%</b>
Households	81	65	NA	59	55	58	-28.40%
Average Household Size	2.89	2.98	NA	2.63	2.05	2.33	-19.43%
Beardsley	410	366	344	297	262	233	-43.17%
Bellingham	327	263	290	247	205	168	-48.62%
Clinton	565	608	622	574	453	449	-20.53%
Clontarf	139	147	196	172	173	164	17.99%
DeGraff	196	195	179	149	133	115	-41.33%
Watson	267	228	238	211	209	205	-23.22%
<b>Big Stone County</b>	<b>8,954</b>	<b>7,941</b>		<b>6,285</b>	<b>5,820</b>	<b>5,269</b>	<b>-41.15%</b>

Source: US Census Bureau

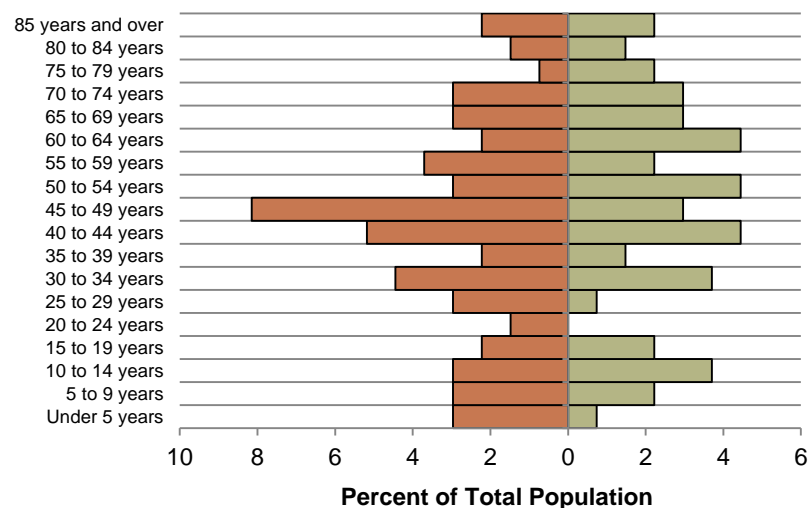
## Odessa Population Projections

	2015	2020	2025	2030	2035	% Change
<b>Odessa</b>	<b>85</b>	<b>80</b>	<b>76</b>	<b>70</b>	<b>65</b>	<b>-23.53%</b>
Big Stone County	5,190	5,160	5,160	5,110	5,060	-2.50%
UMVRDC Region	45,510	45,300	45,000	44,500	44,110	-3.08%

Source: Minnesota Demographic Center

## Odessa Population Distribution, 2010

■ % Male    ■ % Female

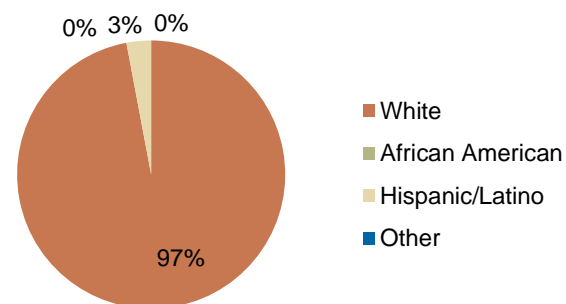


Source: U.S. Census Bureau, 2010

The population distribution shows that there is a larger percent of the population in the middle age cohorts than in the younger or older age cohorts. Odessa has nearly an all white population, which is typical for a community of this size.

Odessa has seen an overall decrease in population from 1960 to 2010 of over 42 percent. The decrease was steady up until the year 2000. Between 2000 and 2010 there was a population increase from 113 to 135. Despite the slight increase in population recently, the population in Odessa is projected to continue to decrease over the next few decades, like many of the communities in the Region.

## Race, 2010



Source: US Census Bureau, Decennial

# Economic

The employment and industry data below represents a picture of the overall economic health of Odessa and Big Stone County. This data shows the diversity of the Region's economy.

## Annual Median Household Income:

- City of Odessa - \$21,250
- Big Stone - \$44,438
- Chippewa - \$44,712
- Lac qui Parle - \$48,269
- Swift - \$43,846
- Yellow Medicine - \$50,740
- UMRDC Region - \$46,401
- Minnesota - \$57,243

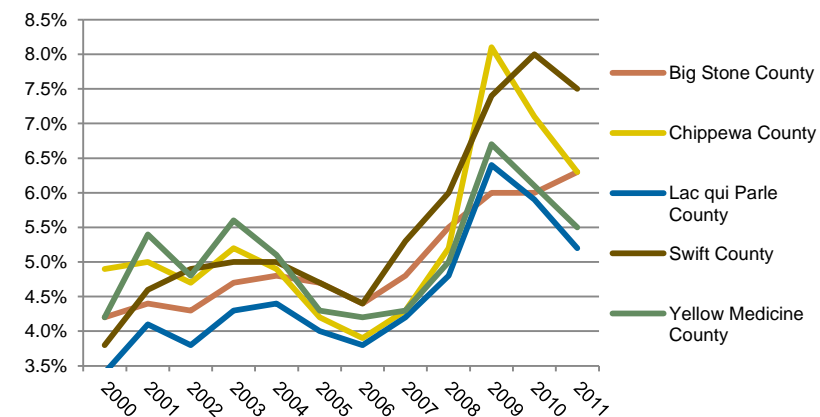
Source: 2007-2011 American Community Survey, U.S. Census Bureau

## Types of Employment in Odessa, 2011

Types of Industry	Number of Employees	Number of Firms	Total Wages	Average Weekly Wage
Trade, Transportation and Utilities	2	1	\$37,481	\$360
Public Administration	2	2	\$27,481	\$264
<b>Total, All Industries</b>	<b>N/A</b>	<b>N/A</b>	<b>N/A</b>	<b>N/A</b>

Source: Minnesota Department of Employment and Economic Development, QCEW

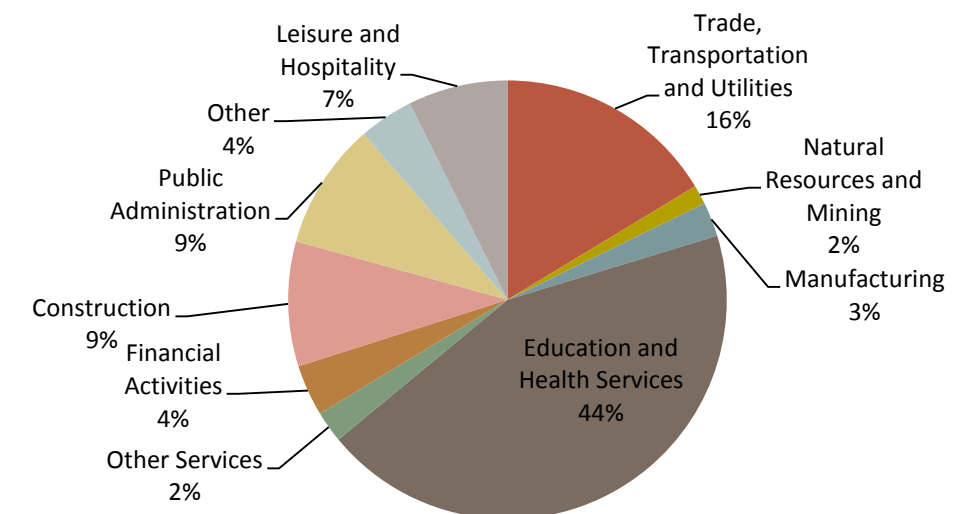
## Unemployment Rates, 2000-2011



Source: Minnesota Department of Employment and Economic Development, LAUS

The employment categories shown in the table above and the chart below show the 11 Super Sectors of Industry, which is the federal standard in data pertaining to business and industry. The table shows that there is some activity within the super sectors, however data for the total number of employees and firms are not available, so a comparison of how much activity is within the super sectors is unavailable. The pie chart below details that in Big Stone County, nearly half of all employment comes from Education and Health Services. Big Stone County had a slight increase in unemployment during the Recession of 2007-2009, but in 2011 maintained an unemployment rate under 6.5%.

## Employment by Industry in Big Stone County, 2011



Source: Minnesota Department of Employment and Economic Development QCEW

