



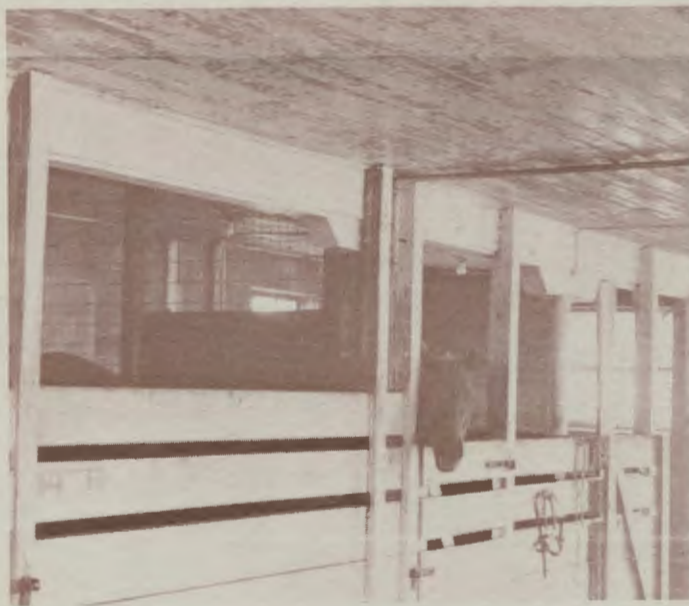
Considered one of the most active clubs on campus, the saddle club bases its prime concern on the efficient management of its stables. Club and committee meetings are held periodically throughout the school year.

The UMM Saddle Club has come a long way since its organization in the Fall of 1971. Each quarter finds the club with more new members and more horses populating the campus horse facilities.



The production of the 1st Annual UMM Open Horse Show in the Spring of 1972 provided the first step toward success for the struggling new membership. The ultimate goal of the club has been to establish and maintain facilities for the stabling of student-owned horses on the UMM campus. Adjoining the campus are several barns vacated by the West Central Experiment Station, one of which has since become the club's horse facility.

A major activity of the club is its open horse show held each spring. This show is one of the largest open horse shows in the area, drawing entries from a 100 mile radius.



Activities such as the horse show give non-horse owning members a chance to participate and learn the many aspects of equestrianism. All members agree that involvement in the club and its many activities provides a worthwhile and rewarding experience, and fosters a sense of responsibility.

The horsemen are proud of their many fine facilities. We have stabling for 21 horses, and there is always an eye to the future for space for the growing equine population. At present we have four pastures. We also have the Melander-Brown arena, which is 120' x 240' regular sanction size. Apparatus include poles and barrels.

Several fields and gravel roads are located close to campus for riding purposes. The scenic Pomme de Terre River and park are located less than a mile away.



**For more information write to:
UMM Saddle Club, UMM P.O. 1057, Morris, MN 56267**

UMM Saddle Club



Office of Admissions
University of Minnesota, Morris
Morris, MN 56267



Nonprofit Org.
U.S. Postage
Paid
Morris, Minn.
Permit No. 123
Third Class

The University of Minnesota, Morris



The tree-shaded atmosphere of the University of Minnesota, Morris provides a relaxed, informal setting in which students can enjoy learning through the exchange of ideas.

It is a small friendly campus, where most students come to know their professors on a first name basis and where there is close student-faculty interaction which enhances the learning process.

As a liberal arts campus of the University of Minnesota, UMM shares the purposes of the University as a whole — instruction, research and service — and provides a program in the liberal arts fundamental to each of these purposes.

Students may choose a four-year program in liberal education leading to a bachelor of arts degree in the four general areas of humanities, social sciences, education and science and math.

In addition there are interdisciplinary programs and special learning options available to enable students to tailor their education to suit their needs.

HUMAN RIGHTS STATEMENT

The University of Minnesota is committed to the policy that all persons shall have equal access to its programs, facilities, and employment without regard to race, creed, color, sex, handicap or national origin.

The UMM Saddle Club Is Pleased To Announce...



On Campus Facilities For Your Horse At The University of Minnesota, Morris

The University of Minnesota, Morris Campus Horse Facilities are managed and operated by the UMM Saddle Club, a student run organization dedicated to the promotion and development of good horsemanship among horse enthusiasts.

The stabling facilities are located in one building and include 21 box stalls (including three broodmare stalls), water sources, locked tack and grain rooms. Four connecting pastures are located nearby.

Hay and straw can be purchased through local farmers or an owner can supply his/her own hay and straw. Loft space is available for storage.

Estimated Cost For Horse Owning Members*

Dues (per horse, per quarter)	\$ 8.00
Manure removal fee (per horse, per quarter)	15.00
Damage deposit (per horse, per year) (ref.)	25.00
Stall reservation non-refundable deposit (per horse, per academic year)	6.00
Key deposit (ref.)	5.00

* These costs subject to change without notice. These figures **do not** include costs for hay and straw, feed, veterinary work, or farrier work.