

3-8-2007

## Scholastic minutes 03/08/2007

Scholastic Committee

Follow this and additional works at: [http://digitalcommons.morris.umn.edu/schol\\_com](http://digitalcommons.morris.umn.edu/schol_com)

---

### Recommended Citation

Scholastic Committee, "Scholastic minutes 03/08/2007" (2007). *Scholastic Committee*. 115.  
[http://digitalcommons.morris.umn.edu/schol\\_com/115](http://digitalcommons.morris.umn.edu/schol_com/115)

This Minutes is brought to you for free and open access by the Campus Governance at University of Minnesota Morris Digital Well. It has been accepted for inclusion in Scholastic Committee by an authorized administrator of University of Minnesota Morris Digital Well. For more information, please contact [skulann@morris.umn.edu](mailto:skulann@morris.umn.edu).

University of Minnesota, Morris  
Scholastic Committee  
Minutes #12, March 8th, 2007

The Scholastic Committee met at 12:00 P.M. on Mar. 8, 2007 in Imholte 217.

Members Present: J. Anderson, J. Deane, D. De Jager (Ex. Assistant), J. Goodnough, S. Haugen, J. Larson, N. McPhee (Chair), B. McQuarrie, L. Meek (Secretary), J. Wencl.

Guest: Bryan Herrmann, Admissions

1. Bryan Herrmann from Admissions presented a report on ACT scores for new high school students and suspension data. The full report is below.

**March, 2007**

**ACT Report**

**By Leslie Meek and Bryan Herrmann**

**Table 1: Yearly Mean ACT Composite Score  $\pm$  Standard Deviation, Standard Error and Range of NHS Students Only.**

Year	Mean ACT + St. Dev.	Std. error	range	Total Students with ACTs	Unknown ACTs	Total Students
1999-2000	24.19+4.20	0.198	12-33	450	15	465
2000-2001	24.63+ 3.84	0.178	13-35	465	20	480
2001-2002	24.39+ 3.65	0.171	16-34	452	27	479
2002-2003	24.57+3.80	0.177	14-35	459	17	476
2003-2004	24.79 +3.78	0.189	14-33	398	15	413
2004-2005	25.09 + 3.80	0.198	15-35	368	21	389
2005-2006	24.64 + 3.91	0.212	13-34	339	19	358
2006-2007	24.4 + 3.97	0.208	15-34	365	16	381

**Table 2: ACT Composite Scores and the Number of NHS Students with those scores.**

	1999	2000	2001	2002	2003	2004	2005	2006
12	4							
13	2	1					2	
14	6	2		2	2			
15	5	1				2		2
16	7	1	5	6	1	3	5	3

17	5	6	3	5	2	7	10	9
18	12	21	14	12	11	4	7	9
19	16	15	20	20	18	13	12	16
20	23	21	29	24	19	17	13	26
21	29	32	27	29	30	18	13	28
22	35	37	44	34	34	25	36	31
23	40	48	49	47	43	37	29	36
24	48	36	45	48	33	30	32	29
25	40	41	46	44	32	39	33	24
26	28	53	44	53	29	32	44	24
27	48	39	30	25	37	38	25	38
28	39	35	34	39	38	37	24	29
29	19	23	18	26	24	25	17	21
30	17	25	22	16	19	16	15	18
31	18	19	11	15	12	9	9	11
32	7	3	5	8	8	6	6	6
33	2	3	4	3	6	8	6	3
34		2	2	1		1	1	2
35		1		2		1		

Table 3: Percentage of ACT scores for NHS Students in selected ACT Ranges

	1999	2000	2001	2002	2003	2004	2005	2006
<b>Below 20</b>	12.26%	9.79%	8.77%	9.45%	8.23%	7.46%	10.06%	10.24%
<b>20-22</b>	18.71%	18.75%	20.88%	18.28%	20.10%	15.42%	17.32%	22.31%
<b>23-24</b>	18.92%	17.50%	19.62%	19.96%	18.40%	17.22%	17.04%	17.06%
<b>25-29</b>	37.42%	39.79%	35.91%	39.29%	38.74%	43.96%	39.94%	35.70%
<b>30+</b>	9.46%	11.04%	9.19%	9.45%	10.90%	10.54%	10.34%	10.50%
<b>Unknown</b>	3.23%	4.17%	5.64%	3.57%	3.63%	5.40%	5.31%	4.20%

Table 4: Raw Data for Table 3

	1999	2000	2001	2002	2003	2004	2005	2006
<b>Below 20</b>	57	47	42	45	34	29	36	39
<b>20-22</b>	87	90	100	87	83	60	62	85
<b>23-24</b>	88	84	94	95	76	67	61	65
<b>25-29</b>	174	191	172	187	160	171	143	136
<b>30+</b>	44	53	44	45	45	41	37	40
<b>Unknown</b>	15	20	27	17	15	21	19	16

**Table 5: Percentages of Students with a Particular ACT Composite Score who were suspended**

Table created by Leslie Meek

ACT Composite	% of students with this ACT score suspended 1999-2000	% of students with this ACT score suspended 2000-2001	% of students with this ACT score suspended 2001-2002	% of students with this ACT score suspended 2002-2003	% of students with this ACT score suspended 2003-2004	% of students with this ACT score suspended 2004-2005
below 20	33%	14%	23%	10%	6%	10%
20 - 22	21%	11%	10%	5%	5%	3%
23-24	13%	5%	4%	3%	2%	3%
25-29	9%	5%	5%	2%	2%	2.50%
30+	7%	1%	< 1%	1%	0%	< 1%
unknown	< 1%	3%	4%	5%	3%	1%

All Fall Grads and all non-degree students remove

**Table 6: Raw Numbers for Tables 5**

Table created by Leslie Meek

ACT Composite	% of all students with this ACT score suspended 2004-2005	% of all students with this ACT Score 04-05	% of students with this ACT score suspended 2003-2004	% of all students with this ACT score 03-04
below 20	10% - (12/119)	7% - (119/1769)	6% - (8/124)	7% - (124/1775)
20 - 22	3% - (9/288)	16% - (288/1769)	5% - (14/290)	16% - (290/1775)
23-24	3% - (9/296)	17% - (296/1769)	2% - 6/295)	16% - (295/1775)

25-29	2.5% - (16/662)	37% - 662/1769)	2% - (12/634)	36% - (634/1775)
30+	< 1% - (1/181)	10 - (181/1769)	0% - (0/189)	11% - (189/1775)
unknown	1% - (3/223)	13% -( 223/1769)	3% - (8/243)	14% - (243/1775)
ACT Composite	% of students with this ACT score suspended 2002-2003	% of all students with this ACT score 02-03	% of students with this ACT score suspended 2001-2002	% of all students with this ACT score 01-02
below 20	10% - (14/133)	7% - (133/1817)	23% - (28/120)	6% - (120/1856)
20 - 22	5% - (16/295)	16% - (295/1817)	10% - (26/253)	14% - (253/1856)
23-24	3% - (8/300)	17% (300/1817)	4% - (9/243)	13% - (243/1856)
25-29	2%- (15/628)	35% (628/1817)	5% - (26/519)	28% - (519/1856)
30+	1% - (3/170)	9% - (170/1817)	< 1% - (1/147)	8% - (147/1856)
unknown	5% - (14/291)	16% - (291/1817)	4% - ( 21/574)	31% - (574/1856)
ACT Composite	% of students with this ACT score suspended 2000-2001	% of all students with this ACT score 00-01	% of students with this ACT score suspended 1999-2000	% of all students with this ACT score 99-00
below 20	14% - (15/106)	6% - (106/1781)	33% - (22/67)	4% - (67/1766)
20 - 22	11% - (20/178)	10% - (178/1781)	21% ( 20/96)	5% - (96/1766)
23-24	5% - (9/180)	10% - (180/1781)	13% - (13/98)	6% - (98/1766)
25-29	5% - (18/383)	22% - (383/1781)	9% - (16/185)	11% - (185/1776)
30+	1% - (1/98)	6% - (98/1781)	7% - (3/42)	2% - (42/1776)
unknown	3% - (21/836)	47% - (836/1781)	< 1% - (11/1278)	72% - (1278/1776)

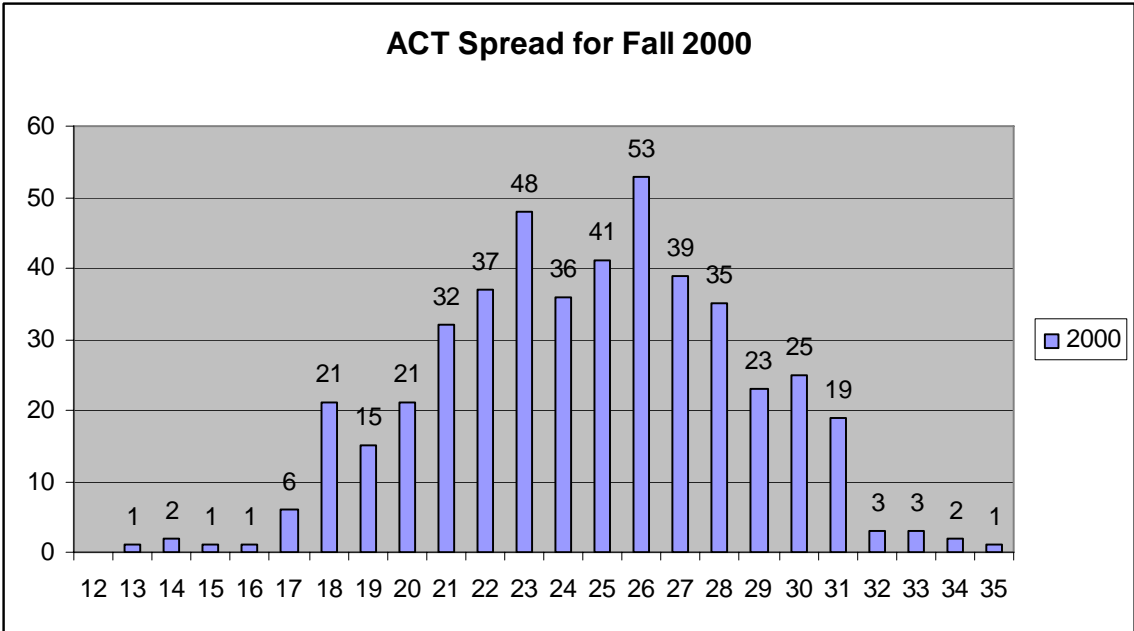
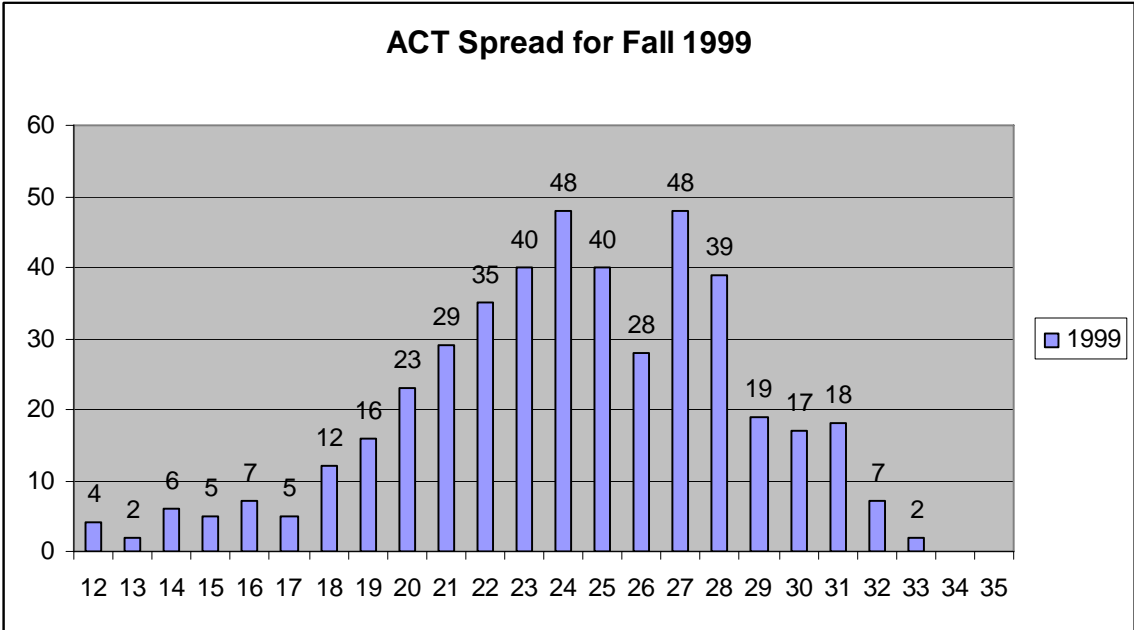
All Fall Grads and all non-degree students removed

**Table 7: Success of Suspended Students Whose Appeals Were Approved**

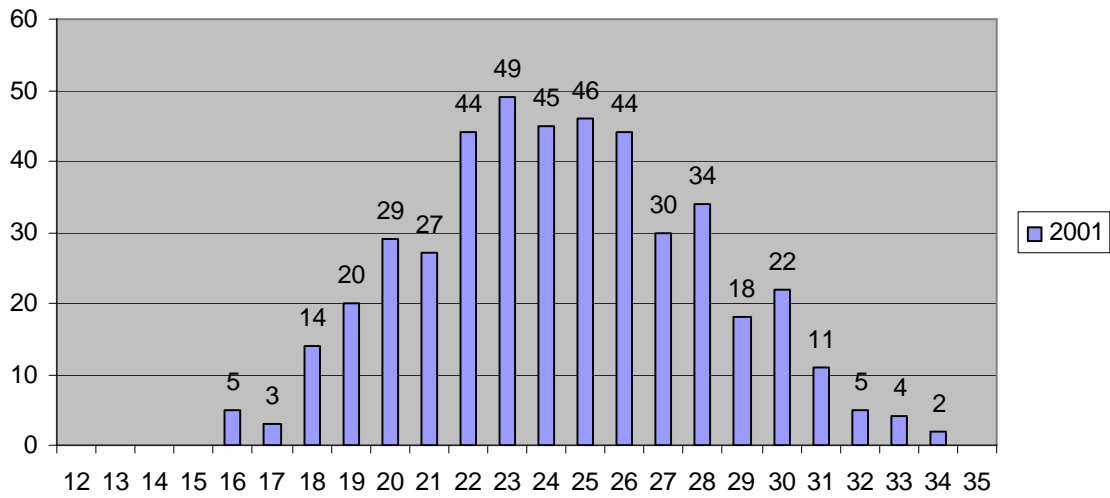
Year	# Approved	# met	% met
		conditions	conditions
<b>99-2000</b>	28	15	54%
<b>2000-01</b>	26	9	35%
<b>2001-02</b>	21	15	71%
<b>2002-03</b>	19	7	37%
<b>2003-04</b>	21	4	19%

2004-05	8	4	50%
---------	---	---	-----

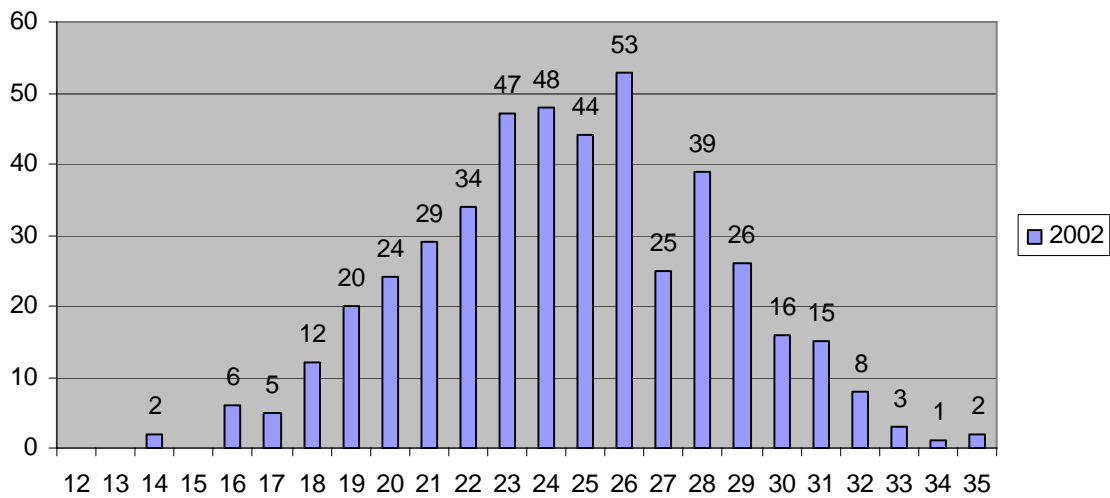
Charts: Data presented in table 2



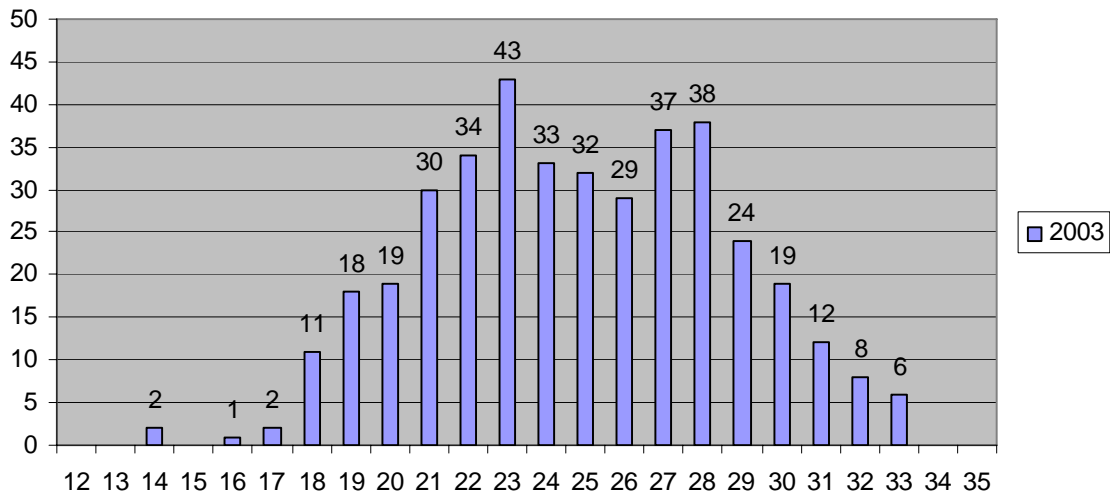
### ACT Spread for Fall 2001



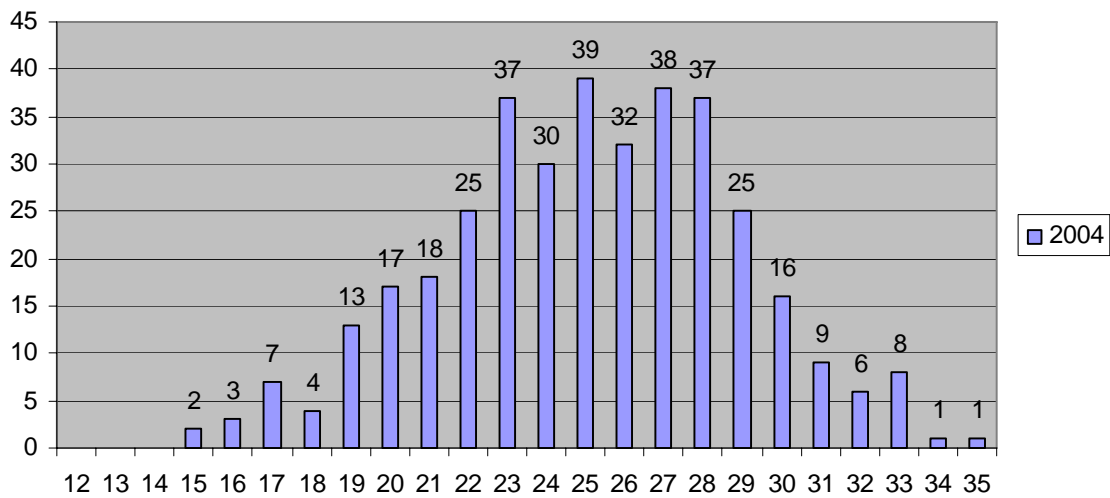
### ACT Spread for Fall 2002



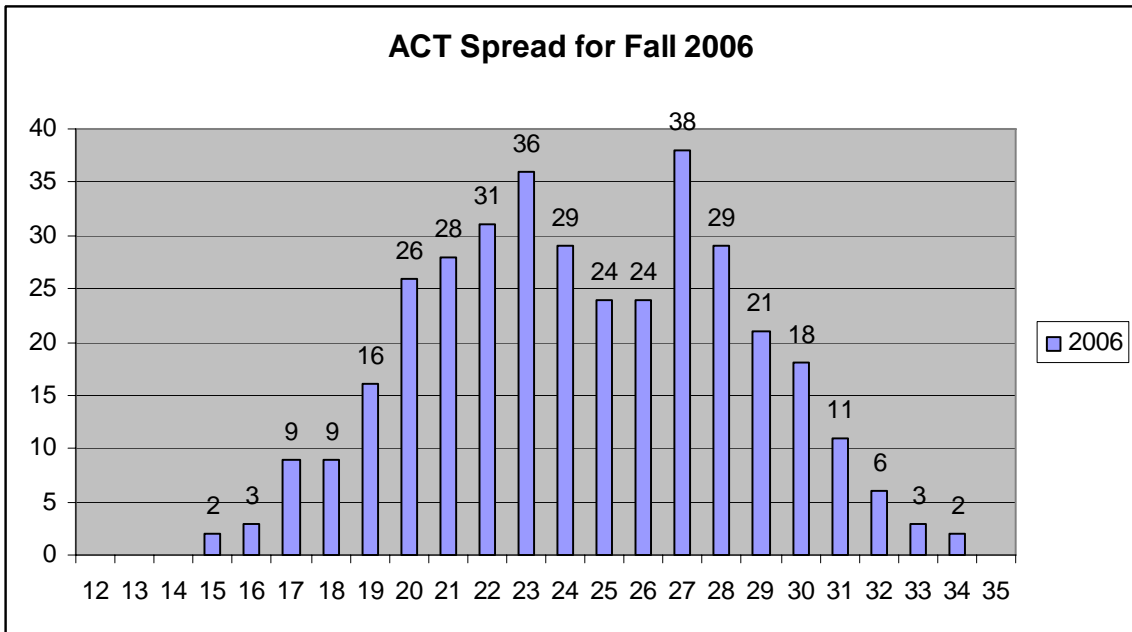
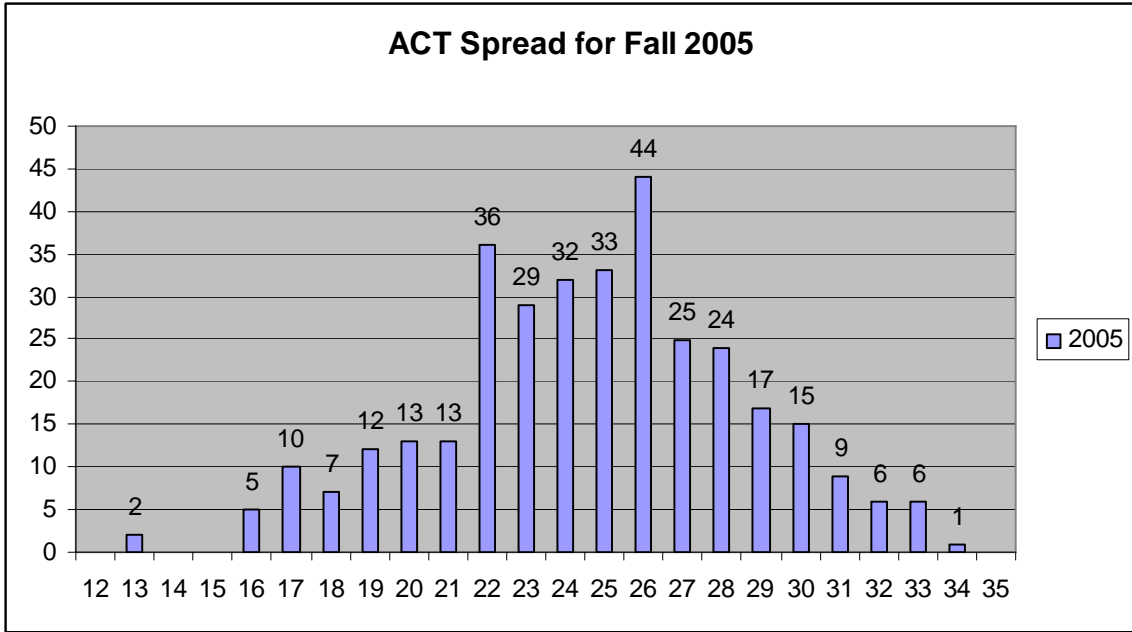
**ACT Spread for Fall 2003**



**ACT Spread for Fall 2004**







Comments by Admissions/Committee members on the report:

1. In the last 2 years, the ACT has added a written component, which is not yet normalized, and this has affected scores slightly.
2. Suspension rates are higher for those students with an overall ACT of 20 or less. Why do we admit students with an ACT of under 20, especially since the

Chancellor told the Assembly that admissions now only admit students who can succeed? Answer: students are often admitted for other reasons, such as high school rank or success in AP classes or success in difficult of classes. ACT score is not the only indicator of college success. Also, since we are a land-grant institution, we have an obligation to make education accessible to a wide variety of students.

3. Could we have a faculty committee to consider those with ACT scores under 20? The Secretary will ask the Director of Admissions.

4. Is there any data that correlates high school rank with ACT? Unknown.

5. Does admissions keep records of why students are admitted (if not ACT score) and can we correlate student success with those reasons? For example, perhaps high school rank does not correlate with student success at UMM but success in AP classes does. Answer: yes, admissions does keep track of why students are admitted.

6. Looking at table 3, although our average ACT every year is around 25, only in 2004 did more than 50% of our admitted students have an ACT 25 or higher.

7. If we are going to admit students with ACT scores below 20, then perhaps we should also give them a 2 week 'introduction to college' summer course, in which math and writing are emphasized. Secondary education students could be utilized to run this program.

The meeting was adjourned.

The next meeting will be March 22nd.