

University of Minnesota Morris Digital Well

## University of Minnesota Morris Digital Well

---

Saddle Club

UMM Archives

---

1972

### Saddle Club Informational Brochure- 1970s

UMM Saddle Club

Follow this and additional works at: <https://digitalcommons.morris.umn.edu/saddleclub>

---

#### Recommended Citation

UMM Saddle Club, "Saddle Club Informational Brochure- 1970s" (1972). *Saddle Club*. 32.  
<https://digitalcommons.morris.umn.edu/saddleclub/32>

This Article is brought to you for free and open access by the UMM Archives at University of Minnesota Morris Digital Well. It has been accepted for inclusion in Saddle Club by an authorized administrator of University of Minnesota Morris Digital Well. For more information, please contact [skulann@morris.umn.edu](mailto:skulann@morris.umn.edu).

# qnlC epppS UMM



Nonprofit Org.  
U. S. Postage  
**Paid**  
Morris, Minn.  
Permit No. 123  
Third Class

Office of Admissions  
University of Minnesota, Morris  
Morris, MN. 56267



## The University of Minnesota, Morris

The tree shaded atmosphere of the University of Minnesota, Morris provides a relaxed, informal setting in which students can enjoy learning through the exchange of ideas.

It is a small friendly campus, where most students come to know their professors on a first name basis and there is close student-faculty interaction, which enhances the learning process.

As a liberal arts campus of the University of Minnesota, UMM shares the purposes of the University as a whole—instruction, research and service—and provides a program in the liberal arts fundamental to each of these purposes.

Students may choose a four year program in liberal education leading to a bachelor or arts degree in the four general areas of humanities, social sciences, education and science and math.

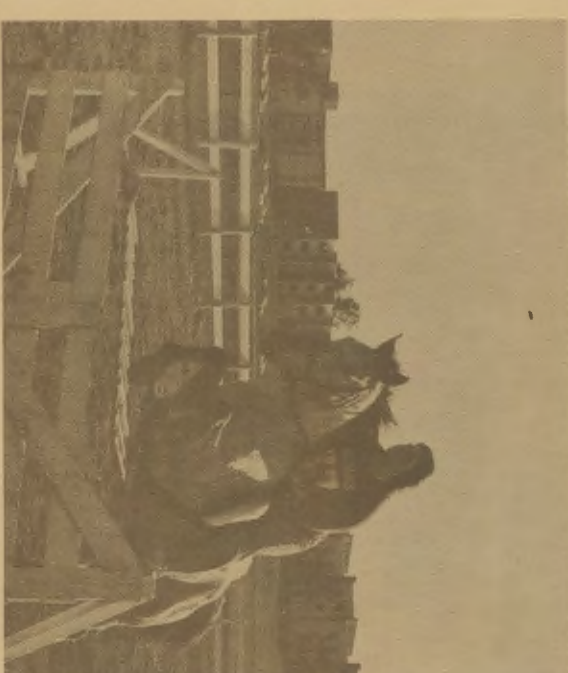
In addition there are interdisciplinary programs and special learning options available to enable students to tailor their education to suit their needs.

### HUMAN RIGHTS STATEMENT

The University of Minnesota is committed to the policy that all persons shall have equal access to its programs, facilities and employment without regard to race, creed, color, sex, handicap or national origin. In adhering to this policy, the University abides by the requirements of Title IX of the Education Amendments of 1972 and by other applicable statutes and regulations relating to equality of opportunity. Inquiries regarding compliance may be directed to Lillian H. Williams, Director, Office of Equal Opportunity and Affirmative Action, 419 Morrill Hall, 100 Church Street S.E., University of Minnesota, Minneapolis, Minnesota 55455, (612) 373-7969, or, for Title IX compliance, to the Director of the Office of Civil Rights, Department of Health, Education, and Welfare, Washington, D.C. 20101.



## The UMM Saddle Club Is Pleased To Announce...



## On Campus Facilities For Your Horse At The University of Minnesota - Morris

The University of Minnesota Morris Campus Horse Facilities are managed and operated by the UMM Saddle Club, a student run organization dedicated to the promotion and development of good horsemanship among horse enthusiasts.

The stabling facilities are located in two buildings and include 23 box stalls, water sources, locked tack and grain rooms. Several pastures are located nearby.

Hay and straw can be purchased through the club, or an owner can bring his/her own hay and straw.

### Estimated Costs for Horse Owning Members (Per Quarter)

Dues (per horse owner)	5.00
Manure Removal (per horse)	15.00
Hay* (25 bales at 1.50 a bale)	37.50
Straw* (20 bales at .75 a bale)	15.00
<b>Total Estimated Cost per Quarter†</b>	<b>62.50</b>

(Costs are subject to change without notice.)

\* These costs vary widely from horse to horse depending on your preference.

† This figure does not include costs for feed, Veterinary work, Farrier work, or a 5.00 deposit to reserve a stall for the year.



Considered one of the most active clubs on campus, the saddle club bases its prime concern on the efficient management of its stables. Club and committee meetings are held periodically throughout the school year.

The UMM Saddle Club has come a long way since its organization in the Fall of 1971. Each quarter finds the club with more new members and more horses populating the campus horse facilities.



The production of the 1ST Annual UMM Open Horse Show in the Spring of 1972 provided the first step toward success for the struggling new membership. The ultimate goal of the club has been to establish and maintain facilities for the stabling of student-owned horses on the UMM campus. Adjoining the campus are several barns vacated by the West Central Experiment Station, two of which have since become the club's horse facilities.



A major activity of the club is its open horse show held each spring. This show is one of the largest open horse shows in the area, drawing entries from a 100 mile radius.



Activities such as the horse show give non-horse owning members a chance to participate and learn the many aspects of equestrianism. All members agree that involvement in the club and its many activities provides a worthwhile and rewarding experience, and fosters a sense of responsibility.



The horsemen are proud of their many fine facilities. We have stabling for 23 horses, and there is always an eye to the future for space for the growing equine population. At present we have 5 pastures. We also have the Melander-Brown arena. Apparatus include poles, barrels, and jumps.



Several fields and gravel roads are located close to campus for riding purposes. The scenic Pomme de Terre River and Park are located less than a mile away.



**For more information write to:  
UMM Saddle Club, UMM P.O. 1057, Morris, Mn. 56267**