

University of Minnesota Morris Digital Well

University of Minnesota Morris Digital Well

Center for Small Towns

Disciplines and Departments

2012

2010 Census Community Data Brochure- City of Bellingham

Center for Small Towns (University of Minnesota, Morris)

Upper Minnesota Valley Regional Development Commission

Follow this and additional works at: <https://digitalcommons.morris.umn.edu/cst>

Recommended Citation

Center for Small Towns (University of Minnesota, Morris) and Upper Minnesota Valley Regional Development Commission, "2010 Census Community Data Brochure- City of Bellingham" (2012). *Center for Small Towns*. 38.

<https://digitalcommons.morris.umn.edu/cst/38>

This Book is brought to you for free and open access by the Disciplines and Departments at University of Minnesota Morris Digital Well. It has been accepted for inclusion in Center for Small Towns by an authorized administrator of University of Minnesota Morris Digital Well. For more information, please contact skulann@morris.umn.edu.

Housing & School Enrollment

The data presented below includes statistics related to school enrollment and housing in the Region, including median home values, median rent, median monthly housing costs and vacancy rates for communities in the UMRDC Region and the State of Minnesota.

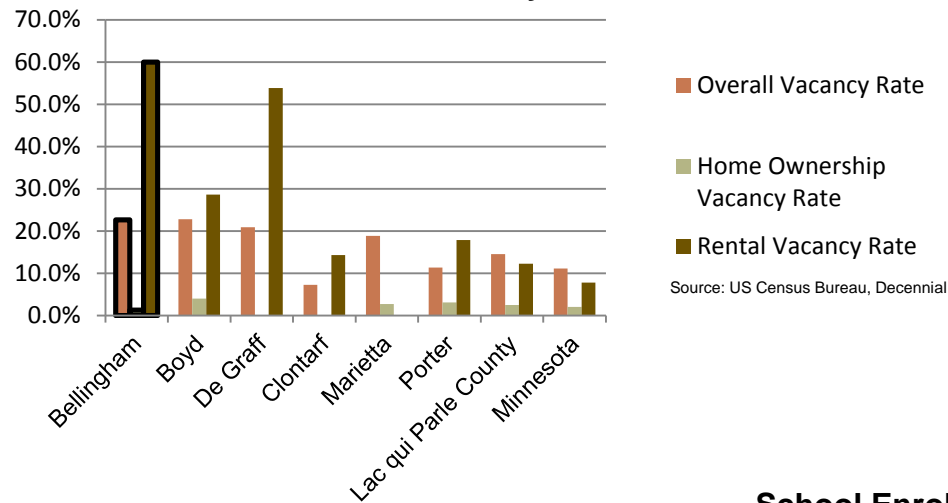
2010 Housing Statistics

City	Median Home Value	Median Rent	Median Monthly Housing Costs
Bellingham	\$36,900	N/A	\$917
Boyd	\$22,200	\$535	\$550
Clontarf	\$81,900	\$310	\$582
De Graff	\$38,400	N/A	\$600
Marietta	\$23,600	N/A	\$560
Porter	\$43,900	\$650	\$863
Lac qui Parle County	\$77,100	\$449	\$868
Minnesota	\$206,200	\$759	\$1,549

Source: US Census Bureau, ACS (2006-2010)

At \$36,900, the median home value in Bellingham is below both Lac qui Parle County and the State of Minnesota, however it falls in the middle for median home values in similar sized communities. The median monthly housing costs for homeowners in Bellingham is the highest among like-sized communities and even higher than that for Lac qui Parle County.

2010 Vacancy Rates



Source: US Census Bureau, Decennial

Home ownership vacancy rate and rental vacancy rate are the proportion of the homeowner or rental inventory that is vacant "for sale" or vacant "for rent." The overall vacancy rate includes other vacancies such as vacant "sold - not occupied," seasonal housing and vacant "rented - not occupied." In 2010, the city of Bellingham had the highest rental vacancy rate compared to other like-sized communities, but a lower home ownership vacancy rate.

School Enrollment Since 1999

School District	1999-2000	2005-2006	2010-2011	% Change
Benson School District	1,216	1,050	970	-20.23%
Canby School District	766	581	522	-31.85%
Clinton-Graceville-Beardsley School District	565	434	377	-33.27%
Dawson-Boyd School District	681	544	517	-24.08%
Kerkhoven-Murdock-Sunburg School District	664	585	557	-16.11%
Lac qui Parle Valley School District	1,245	1,007	820	-34.14%
Lakeview School District	589	609	595	1.02%
M.A.C.C.R.A.Y. School District	986	790	674	-31.64%
Montevideo School District	1,599	1,459	1,342	-16.07%
Ortonville School District	717	530	527	-26.50%
Yellow Medicine East School District	1,299	1,081	862	-33.64%

Source: Minnesota Department of Education

Bellingham is part of the Ortonville School District, which, like most school districts in the Region, has seen a steady decline in enrollment over the last decade. This decline in enrollment is consistent with the declining and aging population in the Region. Note that data was only available for public school districts.

UMVRDC staff developed the concept and design for the Community Profile Brochures and data was collected by students and staff from the Center for Small Towns at the University of Minnesota, Morris. All information was collected from trusted sources such as the U.S. Census Bureau, the American Community Survey, Minnesota Department of Employment & Economic Development (DEED), and the Minnesota Department of Education and is presumed to be accurate.



Helping Communities Prosper

2010 Census Data for Bellingham, Minnesota



This Community Profile Brochure is comprised of statistical information from a variety of sources and will provide a snapshot of historical and current demographic, economic and social trends in the Upper Minnesota Valley Region. The purpose is to provide a concise summary of key community statistics to aid decision making about community and economic development.

This statistical and informational profile was compiled by the UMRDC in collaboration with The Center for Small Towns at the University of Minnesota, Morris for all five counties (Big Stone, Chippewa, Lac qui Parle, Swift and Yellow Medicine) and 37 cities in the Upper Minnesota Valley Region.



Demographics

The demographic profile below provides a snapshot of Bellingham and surrounding communities' historical, current and future population trends including population distribution and make up.

Comparison Historical Population from 1960 to 2010

City	1960	1970	1980	1990	2000	2010	% Change
Bellingham	327	263	290	247	205	168	-48.62%
Households	110	94	NA	103	93	82	-25.45%
Average Household Size	2.97	2.80	NA	2.40	2.20	2.05	-31.08%
Boyd	419	311	329	251	210	175	-58.23%
Clontarf	139	147	196	172	173	164	17.99%
De Graff	196	195	179	149	133	115	-41.33%
Marietta	327	264	279	211	174	162	-50.46%
Porter	261	207	211	210	190	183	-29.89%
Lac qui Parle County	13,330	11,164	10,592	8,924	8,067	7,259	-45.54%

Source: US Census Bureau

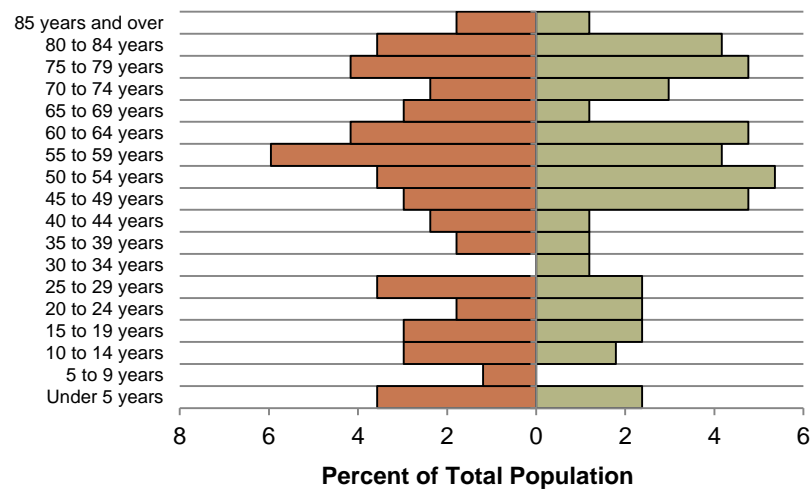
Bellingham Population Projections

	2015	2020	2025	2030	2035	% Change
Bellingham	154	146	141	131	124	-19.48%
Lac qui Parle County	6,940	6,830	6,770	6,640	6,520	-6.05%
UMVRDC Region	45,510	45,300	45,000	44,500	44,110	-3.08%

Source: US Census Bureau

Bellingham Population Distribution, 2010

■ % Male ■ % Female

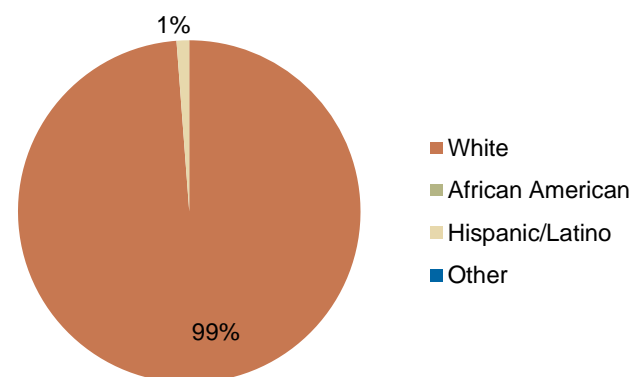


Source: U.S. Census Bureau, 2010

The population distribution above shows there is a high percentage of the population in the middle age cohorts and the 75 to 85 age cohorts. Bellingham has a nearly all white population, which is typical for a community of this size.

Bellingham has seen an overall decrease in population from 1960-2010 of over 48 percent. Although Bellingham gained population from 1970 to 1980, it has seen a steady decline in population ever since 1980. The population is projected to continue to decrease over the next few decades, however less dramatically than in previous decades.

Race, 2010



Source: US Census Bureau, Decennial

Economic

The employment and industry data below represents a picture of the overall economic health of Bellingham and Lac qui Parle County. This data shows the diversity of the Region's economy.

Annual Median Household Income:

- City of Bellingham - \$33,472
- Big Stone - \$44,438
- Chippewa - \$44,712
- Lac qui Parle - \$48,269
- Swift - \$43,846
- Yellow Medicine - \$50,740
- UMRDC Region - \$46,401
- Minnesota - \$57,243

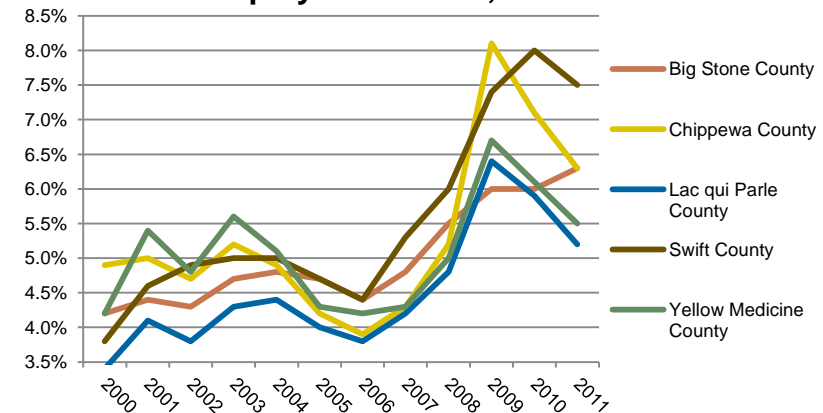
Source: 2007-2011 American Community Survey, U.S. Census Bureau

Types of Employment in Bellingham, 2011

Types of Industry	Number of Employees	Number of Firms	Total Wages	Average Weekly Wage
Public Administration	3	1	\$63,156	\$461
Total, All Industries	42	10	\$1,257,225	\$586

Source: Minnesota Department of Employment and Economic Development, QCEW

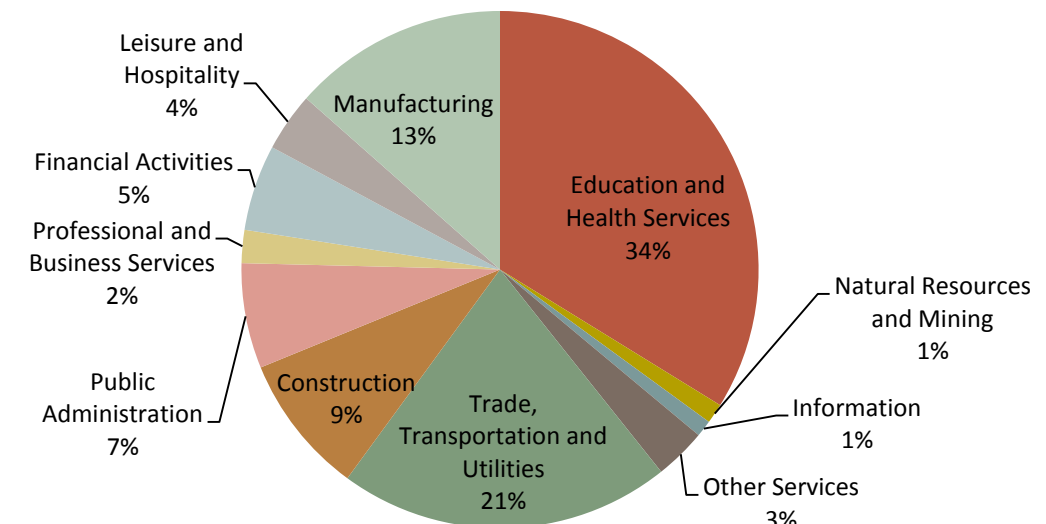
Unemployment Rates, 2000-2011



Source: Minnesota Department of Employment and Economic Development, LAUS

The employment categories shown in the table above and chart below show the 11 Super Sectors of Industry, which is the federal standard in data pertaining to business and industry. The table above shows that much of the employment and economic activity in Bellingham is outside the 11 Super Sectors. The pie chart below details that in Lac qui Parle County, just over one third of all employment comes from Education and Health Services. The Manufacturing and Trade, Transportation and Utilities sectors are also large employers in the county. Lac qui Parle County had a slight increase in unemployment during the Recession of 2007-2009, but in 2011 had an unemployment rate under 5.5%, the lowest of all counties in the Region.

Employment by Industry in Lac qui Parle County, 2011



Source: Minnesota Department of Employment and Economic Development, QCEW

