

University of Minnesota Morris Digital Well

University of Minnesota Morris Digital Well

Center for Small Towns

Disciplines and Departments

2012

2010 Census Community Data Brochure- City of Montevideo

Center for Small Towns (University of Minnesota, Morris)

Upper Minnesota Valley Regional Development Commission

Follow this and additional works at: <https://digitalcommons.morris.umn.edu/cst>

Recommended Citation

Center for Small Towns (University of Minnesota, Morris) and Upper Minnesota Valley Regional Development Commission, "2010 Census Community Data Brochure- City of Montevideo" (2012). *Center for Small Towns*. 41.

<https://digitalcommons.morris.umn.edu/cst/41>

This Book is brought to you for free and open access by the Disciplines and Departments at University of Minnesota Morris Digital Well. It has been accepted for inclusion in Center for Small Towns by an authorized administrator of University of Minnesota Morris Digital Well. For more information, please contact skulann@morris.umn.edu.

Housing & School Enrollment

The data presented below includes statistics related to school enrollment and housing in the Region, including median home values, median rent, median monthly housing costs and vacancy rates for communities in the UMRVDC Region and the State of Minnesota.

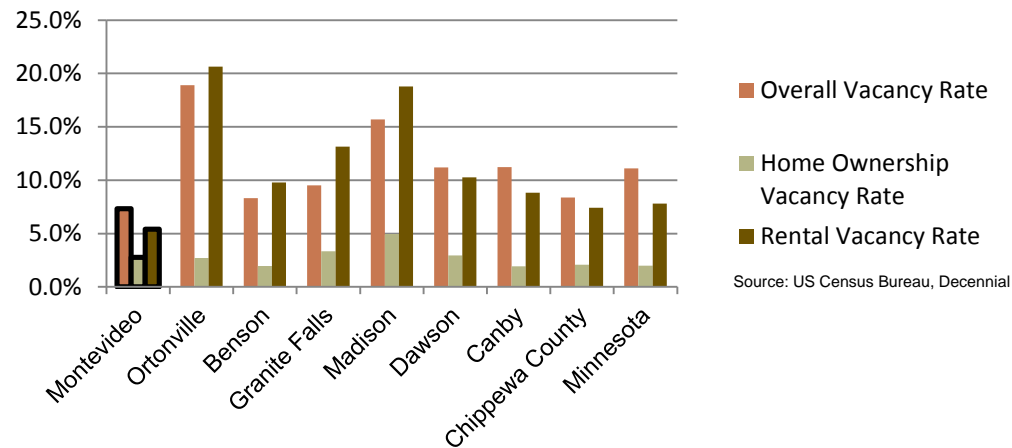
2010 Housing Statistics

| City | Median Home Value | Median Rent | Median Monthly Housing Costs |
|-------------------|-------------------|--------------|------------------------------|
| Montevideo | \$84,600 | \$547 | \$978 |
| Benson | \$101,000 | \$451 | \$1,026 |
| Granite Falls | \$102,000 | \$499 | \$954 |
| Ortonville | \$78,400 | \$441 | \$800 |
| Dawson | \$68,600 | \$444 | \$785 |
| Canby | \$64,500 | \$384 | \$848 |
| Madison | \$56,500 | \$475 | \$807 |
| Chippewa County | \$94,900 | \$542 | \$1,026 |
| Minnesota | \$206,200 | \$759 | \$1,549 |

Source: US Census Bureau, ACS (2006-2010)

The median home value in Montevideo falls in the middle when compared to several of the Region's larger communities, however, it is well below that of both Benson and Granite Falls which are the Region's second and third largest cities after Montevideo. Both the median monthly housing costs for homeowners and median monthly rent in Montevideo are higher than most other communities in the Region.

2010 Vacancy Rates



Source: US Census Bureau, Decennial

Home ownership vacancy rate and rental vacancy rate are the proportion of the homeowner or rental inventory that is vacant "for sale" or vacant "for rent." The overall vacancy rate includes other vacancies such as vacant "sold - not occupied," seasonal housing and vacant "rented - not occupied." In 2010, the city of Montevideo had the lowest vacancy rates among similar sized communities.

School Enrollment Since 1999

| School District | 1999-2000 | 2005-2006 | 2010-2011 | % Change |
|--|--------------|--------------|--------------|----------------|
| Benson School District | 1,216 | 1,050 | 970 | -20.23% |
| Canby School District | 766 | 581 | 522 | -31.85% |
| Clinton-Graceville-Beardsley School District | 565 | 434 | 377 | -33.27% |
| Dawson-Boyd School District | 681 | 544 | 517 | -24.08% |
| Kerkhoven-Murdock-Sunburg School District | 664 | 585 | 557 | -16.11% |
| Lac qui Parle Valley School District | 1,245 | 1,007 | 820 | -34.14% |
| Lakeview School District | 589 | 609 | 595 | 1.02% |
| M.A.C.C.R.A.Y. School District | 986 | 790 | 674 | -31.64% |
| Montevideo School District | 1,599 | 1,459 | 1,342 | -16.07% |
| Ortonville School District | 717 | 530 | 527 | -26.50% |
| Yellow Medicine East School District | 1,299 | 1,081 | 862 | -33.64% |

Source: Minnesota Department of Education

The Montevideo School District, like most school districts in the Region, has seen a steady decline in school enrollment over the last decade. However, the rate of decline for the Montevideo School District has been slower than many other school districts in the Region. Note that data was only available for public school districts.

UMVRDC staff developed the concept and design for the Community Profile Brochures and data was collected by students and staff from the Center for Small Towns at the University of Minnesota, Morris. All information was collected from trusted sources such as the U.S. Census Bureau, the American Community Survey, Minnesota Department of Employment & Economic Development (DEED), and the Minnesota Department of Education and is presumed to be accurate.



Helping Communities Prosper

2010 Census Data for Montevideo, Minnesota



This Community Profile Brochure is comprised of statistical information from a variety of sources and will provide a snapshot of historical and current demographic, economic and social trends in the Upper Minnesota Valley Region. The purpose is to provide a concise summary of key community statistics to aid decision making about community and economic development.

This statistical and informational profile was compiled by the UMRVDC in collaboration with The Center for Small Towns at the University of Minnesota, Morris for all five counties (Big Stone, Chippewa, Lac qui Parle, Swift and Yellow Medicine) and 37 cities in the Upper Minnesota Valley Region.



Demographics

The demographic profile below provides a snapshot of Montevideo and surrounding communities' historical, current and future population trends including population distribution and make up.

Comparison Historical Population from 1960 to 2010

| City | 1960 | 1970 | 1980 | 1990 | 2000 | 2010 | % Change |
|------------------------|---------------|---------------|---------------|---------------|---------------|---------------|----------------|
| Montevideo | 5,693 | 5,661 | 5,845 | 5,499 | 5,346 | 5,238 | -7.99% |
| Households | 1,904 | 1,988 | NA | 2,340 | 2,353 | 2,326 | 22.16% |
| Average Household Size | 2.99 | 2.85 | NA | 2.35 | 2.27 | 2.25 | -24.68% |
| Ortonville | 2,671 | 2,663 | 2,548 | 2,205 | 2,158 | 1,916 | -28.27% |
| Benson | 3,678 | 3,484 | 3,656 | 3,235 | 3,376 | 3,240 | -11.91% |
| Granite Falls | 2,165 | 2,582 | 2,666 | 3,083 | 3,070 | 2,897 | 33.81% |
| Madison | 2,380 | 2,242 | 2,212 | 1,951 | 1,768 | 1,551 | -34.83% |
| Dawson | 1,766 | 1,699 | 1,901 | 1,626 | 1,539 | 1,540 | -12.80% |
| Canby | 2,146 | 2,147 | 2,143 | 1,826 | 1,903 | 1,795 | -16.36% |
| Chippewa County | 16,320 | 15,109 | 14,941 | 13,228 | 13,088 | 12,441 | -23.77% |

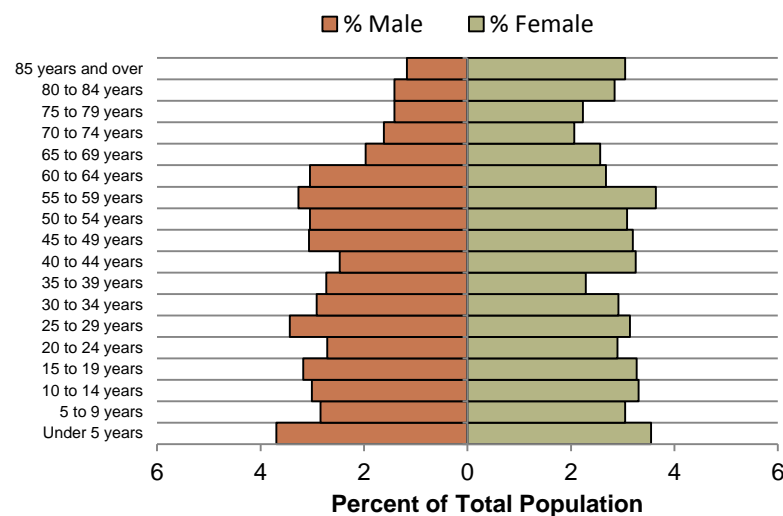
Source: US Census Bureau

Montevideo Population Projections

| | 2015 | 2020 | 2025 | 2030 | 2035 | % Change |
|-------------------|--------------|--------------|--------------|--------------|--------------|--------------|
| Montevideo | 5,527 | 5,587 | 5,647 | 5,635 | 5,634 | 1.94% |
| Chippewa | 12,890 | 13,040 | 13,200 | 13,130 | 13,130 | 1.86% |
| UMVRDC Region | 45,510 | 45,300 | 45,000 | 44,500 | 44,110 | -3.08% |

Source: Minnesota Demographic Center

Montevideo Population Distribution, 2010

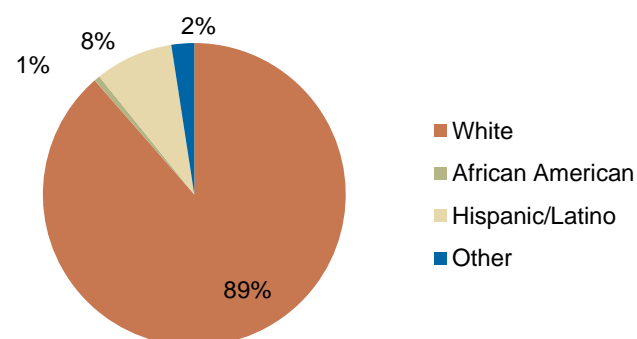


Source: U.S. Census Bureau, 2010 Decennial Census

The population distribution shows that the population is well distributed throughout the age cohorts with a decline above the age of 65 years, which is not common for cities in the Region. Montevideo has a more diverse population than other communities in the Region, with over 10% of its population being non-white.

Montevideo has seen an overall decrease in population from 1960 to 2010. However, compared to other cities in the Region, Montevideo's historical population seems rather flat with the overall rate of decline nearly 8%. Montevideo's population is projected to increase slightly over the next few decades, which is common for regional centers in rural areas across Minnesota.

Race, 2010



Source: US Census Bureau, Decennial Census

Economic

The employment and industry data below represents a picture of the overall economic health of Montevideo and Chippewa County. This data shows the diversity of the Region's economy.

Types of Employment in Montevideo, 2011

| Types of Industry | Number of Employees | Number of Firms | Total Wages | Average Weekly Wage |
|-------------------------------------|---------------------|-----------------|----------------------|---------------------|
| Manufacturing | 964 | 15 | \$37,432,222 | \$745 |
| Trade, Transportation and Utilities | 484 | 58 | \$14,168,370 | \$565 |
| Leisure and Hospitality | 301 | 24 | \$2,993,402 | \$191 |
| Public Administration | 211 | 15 | \$8,474,737 | \$771 |
| Financial Activities | 207 | 23 | \$6,106,131 | \$568 |
| Professional and Business Services | 166 | 29 | \$5,407,211 | \$627 |
| Other Services | 113 | 23 | \$2,093,024 | \$338 |
| Total, All Industries | 3,731 | 247 | \$117,561,978 | \$605 |

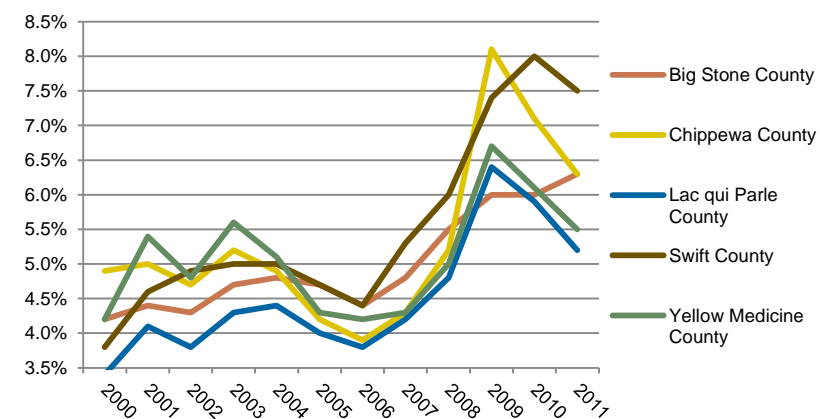
Source: Minnesota Department of Employment and Economic Development, QCEW

Annual Median Household Income:

- **Montevideo - \$38,262**
- **Big Stone - \$44,438**
- **Chippewa - \$44,712**
- **Lac qui Parle - \$48,269**
- **Swift - \$43,846**
- **Yellow Medicine - \$50,740**
- **UMVRDC Region - \$46,401**
- **Minnesota - \$57,243**

Source: 2007-2011 American Community Survey, U.S. Census Bureau

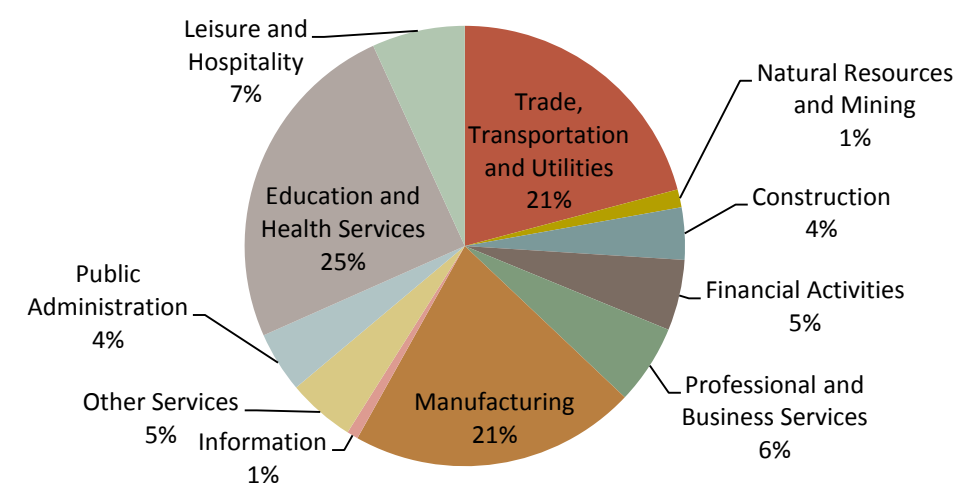
Unemployment Rates, 2000-2011



Source: Minnesota Department of Employment and Economic Development, LAUS

The employment categories shown in the table above and chart below show the 11 Super Sectors of Industry, which is the federal standard in data pertaining to business and industry. Much of the economic activity in Montevideo is in Manufacturing. The pie chart below details that in Chippewa County, one quarter of all employment comes from Education and Health Services with Manufacturing not far behind. Chippewa County had a slight increase in unemployment during the Recession of 2007 - 2009, but in 2011 had an unemployment rate under 6.5%.

Employment by Industry in Chippewa County, 2011



Source: Minnesota Department of Employment and Economic Development, QCEW

