

University of Minnesota Morris Digital Well

University of Minnesota Morris Digital Well

Miscellaneous Campus Publications

UMM Archives

1927

West Central School of Agriculture Brochure

West Central School of Agriculture

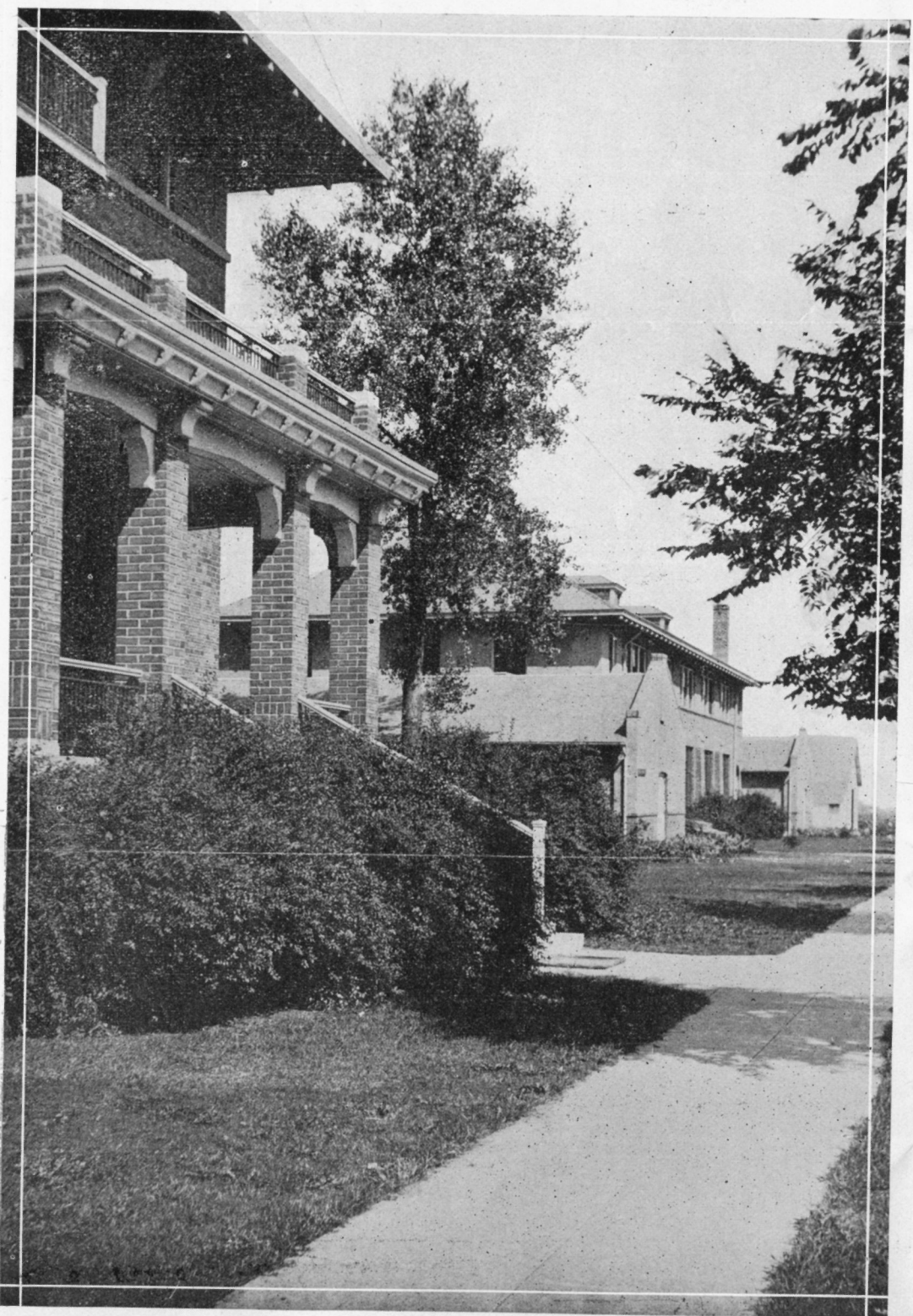
Follow this and additional works at: <https://digitalcommons.morris.umn.edu/miscpubs>

Jan 27 1927
Fall Term Opens September 27, 1926

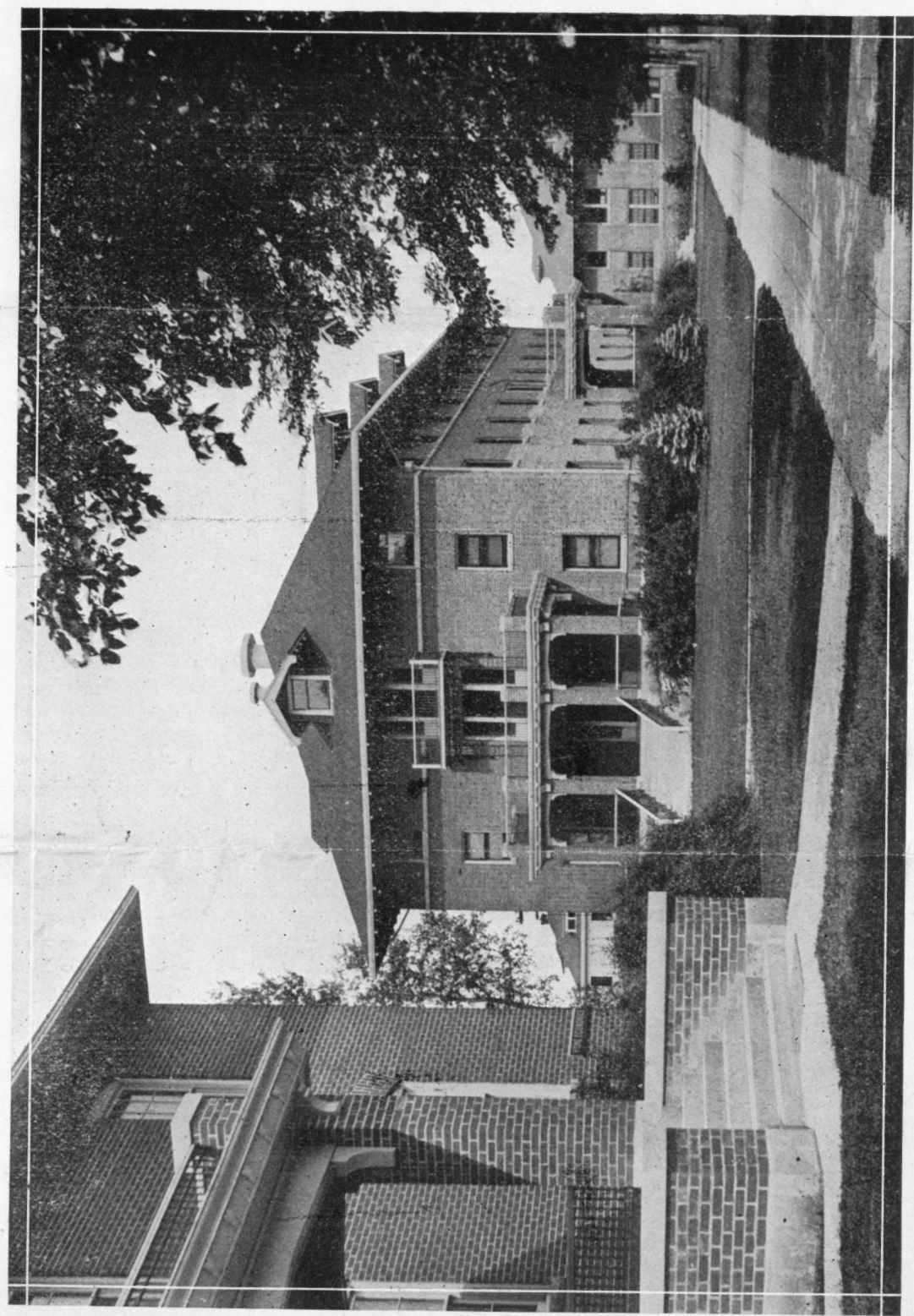
Practical Courses in Agriculture
and Home Economics

WEST CENTRAL SCHOOL OF AGRICULTURE

University of Minnesota
MORRIS, MINNESOTA



View of Buildings Looking North, showing East Entrance to One of the Dormitories, Engineering Building and Shops



View of Buildings Looking East, Showing Home Economics Girls' Dormitory and Agricultural Hall

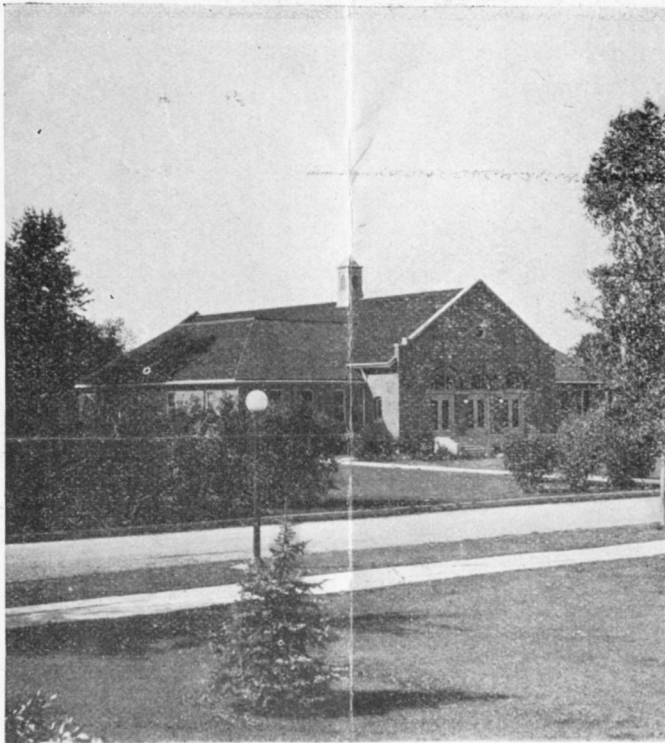
WEST CENTRAL SCHOOL OF AGRICULTURE
University of Minnesota
 MORRIS, MINNESOTA

The West Central School of Agriculture is a branch of the University of Minnesota and was established for the purpose of giving practical training in agriculture, home economics and associated subjects to the young men and women of western Minnesota. All courses of instruction include the necessary academic, social and cultural subjects to give the student a well-rounded education.

BUILDINGS

Modern buildings, fully equipped for the most practical type of instruction; a campus of 40 acres, to the natural beauty of which has been added the work of the best landscape artists; an experiment station and farm of over 400 acres and splendid live stock herds, make the West Central School one of the largest and best equipped secondary schools of agriculture in the United States.

Four student dormitories, a modern dining hall, gymnasium, auditorium and new hospital make it possible to care for the comfort and health of every student.



COURSES OF STUDY

The school year is of six months duration. The full course leading to graduation is three years of six months each. During these three years students will have an opportunity to take most of the courses in which they are most interested. An advanced year is offered to students who wish to specialize or take advanced work.

SCHOOL ACTIVITIES

In addition to an opportunity to get the best kind of school training, the school has many other opportunities to offer. A large student orchestra under the management of the Music Department, a chorus of over one hundred voices and opportunity to take private instruction in any kind of instrumental, vocal, or band music is offered to all students. Three literary societies, an engineering club, and a livestock club also offer a splendid opportunity to all students to take part in these activities.

COSTS

The School of Agriculture is a part of the University of Minnesota. It is maintained by the state and no tuition is charged. The small laboratory fees charged pay for materials used in the shops. Board and room are furnished at actual cost. The total expense for six months is approximately \$150.00. This is payable in monthly installments.

Potatoes

ENTRANCE REQUIREMENTS

The West Central School is open to all young men and young women who desire training in agriculture, home economics and associated subjects. Prospective students should have an eighth grade education. However, mature young men and women who have not completed their common school work will be accepted. High school subjects will be accepted for advanced credit for similar work.

TIME OF OPENING

Jan 2 Monday, September 27, is Registration Day for the fall term. This date gives students who are at work on the farm or in the home an opportunity to help with the fall work before entering school. The School has so arranged its program that students may take their work with the least possible interruption to the farm routine. The school year will close March 25th, thereby giving students the spring and summer months in which to help with the work at home.

summer

WRITE FOR CATALOG

The complete catalog for 1926-1927 is now ready for distribution. It contains detailed information in regard to all of the courses of study as well as the rules and regulations of the School and much other general information. It will be sent to any one upon request. Write to P. E. Miller, Superintendent, Morris, Minn.

