

University of Minnesota Morris Digital Well

## University of Minnesota Morris Digital Well

---

Center for Small Towns

Disciplines and Departments

---

2012

### 2010 Census Community Data Brochure- Clara City

Center for Small Towns (University of Minnesota, Morris)

Upper Minnesota Valley Regional Development Commission

Follow this and additional works at: <https://digitalcommons.morris.umn.edu/cst>

---

#### Recommended Citation

Center for Small Towns (University of Minnesota, Morris) and Upper Minnesota Valley Regional Development Commission, "2010 Census Community Data Brochure- Clara City" (2012). *Center for Small Towns*. 21.

<https://digitalcommons.morris.umn.edu/cst/21>

This Book is brought to you for free and open access by the Disciplines and Departments at University of Minnesota Morris Digital Well. It has been accepted for inclusion in Center for Small Towns by an authorized administrator of University of Minnesota Morris Digital Well. For more information, please contact [skulann@morris.umn.edu](mailto:skulann@morris.umn.edu).

# Housing & School Enrollment

The data presented below includes statistics related to school enrollment and housing in the Region, including median home values, median rent, median monthly housing costs and vacancy rates for communities in the UMRVDC Region and the State of Minnesota.

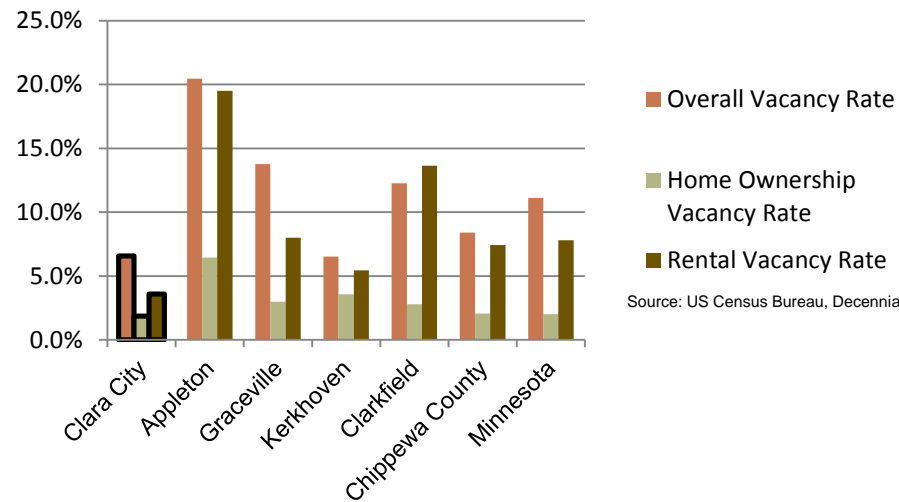
## 2010 Housing Statistics

City	Median Home Value	Median Rent	Median Monthly Housing Costs
<b>Clara City</b>	<b>\$81,800</b>	<b>\$682</b>	<b>\$985</b>
Appleton	\$58,300	\$541	\$903
Canby	\$64,500	\$384	\$848
Dawson	\$68,600	\$444	\$785
Madison	\$56,500	\$475	\$807
Ortonville	\$78,400	\$441	\$800
Chippewa County	\$94,400	\$542	\$1,026
Minnesota	\$206,200	\$759	\$1,549

Source: US Census Bureau, ACS (2006-2010)

The median home value and median monthly housing costs for homeowners in Clara City are the highest among many other similar sized cities in the Region. However they are both lower than the averages for all of Chippewa County. Median monthly rent in Clara City is again, the highest among other similar sized cities in the Region, but it is also \$140 higher than the average median rent in Chippewa County.

## 2010 Vacancy Rates



Source: US Census Bureau, Decennial

Home ownership vacancy rate and rental vacancy rate are the proportion of the homeowner or rental inventory that is vacant "for sale" or vacant "for rent." The overall vacancy rate includes other vacancies such as vacant "sold - not occupied," seasonal housing and vacant "rented - not occupied." In 2010, the community of Clara City had the lowest vacancy rates among similar sized communities.

## School Enrollment Since 1999

School District	1999-2000	2005-2006	2010-2011	% Change
Benson School District	1,216	1,050	970	-20.23%
Canby School District	766	581	522	-31.85%
Clinton-Graceville-Beardsley School District	565	434	377	-33.27%
Dawson-Boyd School District	681	544	517	-24.08%
Kerkhoven-Murdock-Sunburg School District	664	585	557	-16.11%
Lac qui Parle Valley School District	1,245	1,007	820	-34.14%
Lakeview School District	589	609	595	1.02%
<b>M.A.C.C.R.A.Y. School District</b>	<b>986</b>	<b>790</b>	<b>674</b>	<b>-31.64%</b>
Montevideo School District	1,599	1,459	1,342	-16.07%
Ortonville School District	717	530	527	-26.50%
Yellow Medicine East School District	1,299	1,081	862	-33.64%

Source: Minnesota Department of Education

Clara City is part of the M.A.C.C.R.A.Y. School District, which, like most school districts in the Region, have seen a steady decline in school enrollment over the last decade. The decline in enrollment is consistent with the declining and aging population in the Region. Note that data was only available for public school districts.

UMVRDC staff developed the concept and design for the Community Profile Brochures and data was collected by students and staff from the Center for Small Towns at the University of Minnesota, Morris. All information was collected from trusted sources such as the U.S. Census Bureau, the American Community Survey, Minnesota Department of Employment & Economic Development (DEED), and the Minnesota Department of Education and is presumed to be accurate.



Helping Communities Prosper

# 2010 Census Data for Clara City, Minnesota



This Community Profile Brochure is comprised of statistical information from a variety of sources and will provide a snapshot of historical and current demographic, economic and social trends in the Upper Minnesota Valley Region. The purpose is to provide a concise summary of key community statistics to aid decision making about community and economic development.

This statistical and informational profile was compiled by the UMRVDC in collaboration with The Center for Small Towns at the University of Minnesota, Morris for all five counties (Big Stone, Chippewa, Lac qui Parle, Swift and Yellow Medicine) and 37 cities in the Upper Minnesota Valley Region.



# Demographics

The demographic profile below provides a snapshot of Clara City and surrounding communities' historical, current and future population trends including population distribution and make up.

## Comparison Historical Population from 1960 to 2010

City	1960	1970	1980	1990	2000	2010	% Change
<b>Clara City</b>	<b>1,358</b>	<b>1,491</b>	<b>1,574</b>	<b>1,307</b>	<b>1,393</b>	<b>1,360</b>	<b>0.15%</b>
Households	463	507	NA	566	591	625	34.99%
Average Household Size	2.93	2.94	NA	2.31	2.36	2.18	-25.81%
Appleton	2,122	1,789	1,842	1,552	2,871	1,412	-33.46%
Canby	2,146	2,147	2,143	1,826	1,903	1,795	-16.36%
Dawson	1,766	1,699	1,901	1,626	1,539	1,540	-12.80%
Madison	1,100	1,084	1,171	924	944	863	-21.55%
Ortonville	2,671	2,663	2,548	2,205	2,158	1,916	-28.27%
Chippewa County	16,320	15,109	14,941	13,228	13,088	12,441	-23.77%

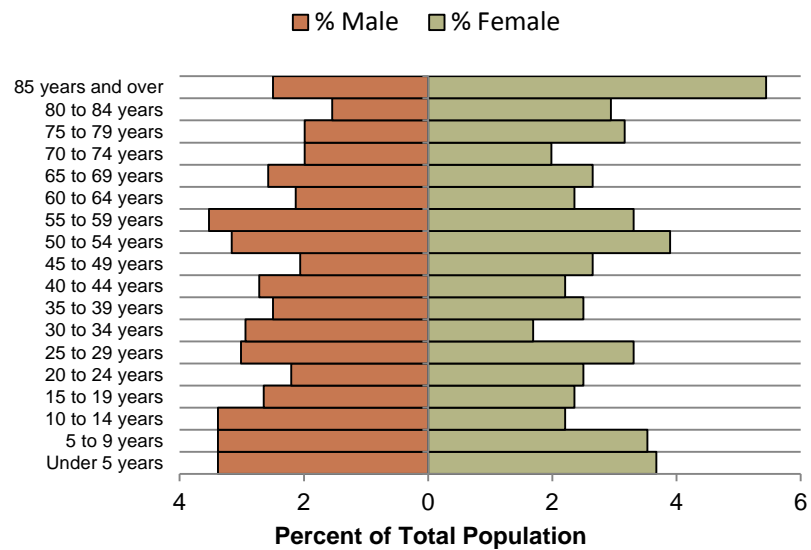
Source: US Census Bureau

## Clara City Population Projections

	2015	2020	2025	2030	2035	% Change
<b>Clara City</b>	<b>1,368</b>	<b>1,390</b>	<b>1,412</b>	<b>1,424</b>	<b>1,431</b>	<b>4.61%</b>
Chippewa County	12,890	13,040	13,200	13,130	13,130	1.86%
UMVRDC Region	45,510	45,300	45,000	44,500	44,110	-3.08%

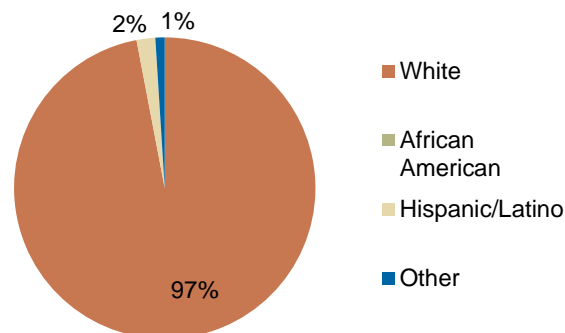
Source: Minnesota Demographic Center

## Clara City Population Distribution, 2010



Clara City is one of the only cities in the Region that has seen an overall increase in population from 1960 to 2010. The population has fluctuated up, with the greatest increase from 1970 to 1980 and the greatest decrease occurring between 1980 and 1990. Clara City is also one of very few cities in the region where the population is projected to increase over the next few decades. This could be due to its proximity to two regional centers, Montevideo and Willmar.

## Race, 2010



Source: US Census Bureau, Decennial Census

The population distribution above shows a healthy age distribution with larger segments of the population between the ages of 50 to 59 and under 14 years old. Clara City has more youth population than many cities within the region. Clara City also has a nearly all white population, which is typical for a community of this size.

# Economic

The employment and industry data below represents a picture of the overall economic health of Clara City and Chippewa County. This data shows the diversity of the Region's economy.

## Annual Median Household Income:

- Clara City - \$38,704
- Big Stone - \$44,438
- Chippewa - \$44,712
- Lac qui Parle - \$48,269
- Swift - \$43,846
- Yellow Medicine - \$50,740
- UMVRDC Region - \$46,401
- Minnesota - \$57,243

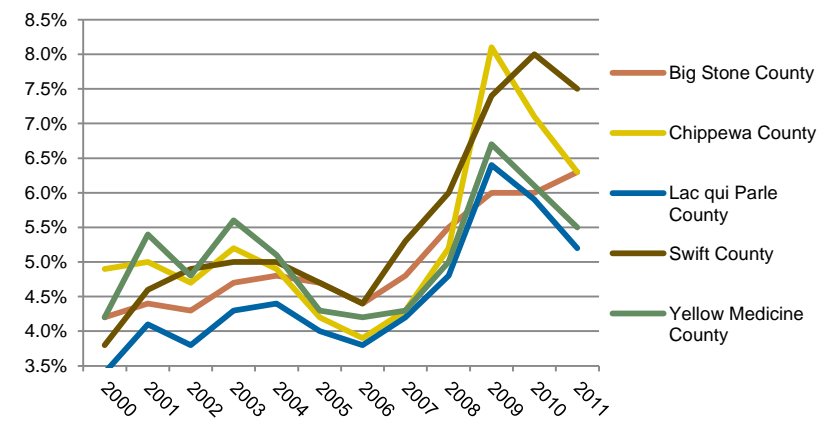
Source: 2007-2011 American Community Survey, U.S. Census Bureau

## Types of Employment in Clara City, 2011

Types of Industry	Number of Employees	Number of Firms	Total Wages	Average Weekly Wage
Trade, Transportation and Utilities	141	16	\$3,372,744	\$463
Financial Activities	54	7	\$2,038,165	\$724
Professional and Business Services	41	5	\$1,603,849	\$760
Public Administration	15	2	\$420,856	\$558
Leisure and Hospitality	8	6	\$145,819	\$365
<b>Total, All Industries</b>	<b>483</b>	<b>58</b>	<b>\$12,673,284</b>	<b>\$506</b>

Source: Minnesota Department of Employment and Economic Development, QCEW

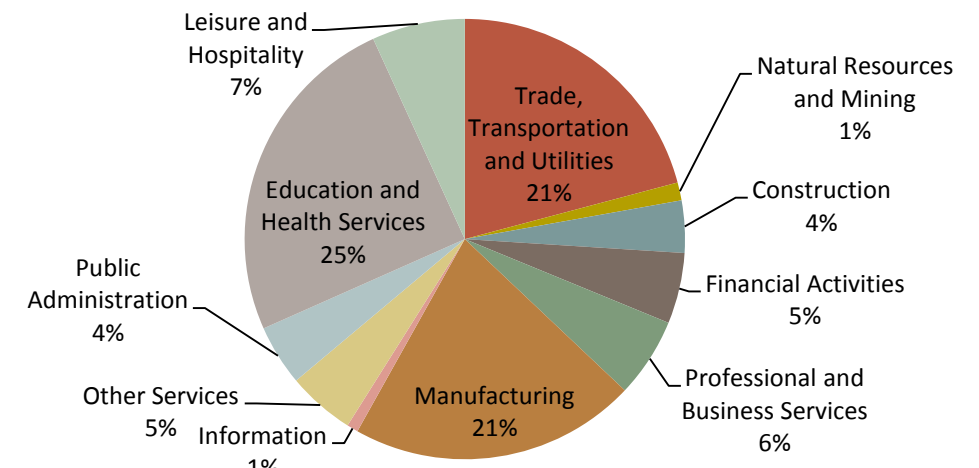
## Unemployment Rates, 2000-2011



Source: Minnesota Department of Employment and Economic Development, LAUS

The employment categories shown in the table above and chart below show the 11 Super Sectors of Industry, which is the federal standard in data pertaining to business and industry. Much of the economic activity in Clara City is in 5 of the 11 sectors. The pie chart below details that in Chippewa County, one quarter of all employment comes from Education and Health Services. Chippewa County had a slight increase in unemployment during the Recession of 2007-2009, but in 2011 had an unemployment rate under 6.5%.

## Employment by Industry in Chippewa County, 2011



Source: Minnesota Department of Employment and Economic Development, QCEW

