

University of Minnesota Morris Digital Well

University of Minnesota Morris Digital Well

Institutional Effectiveness and Research
Reports

Disciplines and Departments

7-1-2003

Institutional Data Book 2002-2003

University of Minnesota, Morris Office of Institutional Research

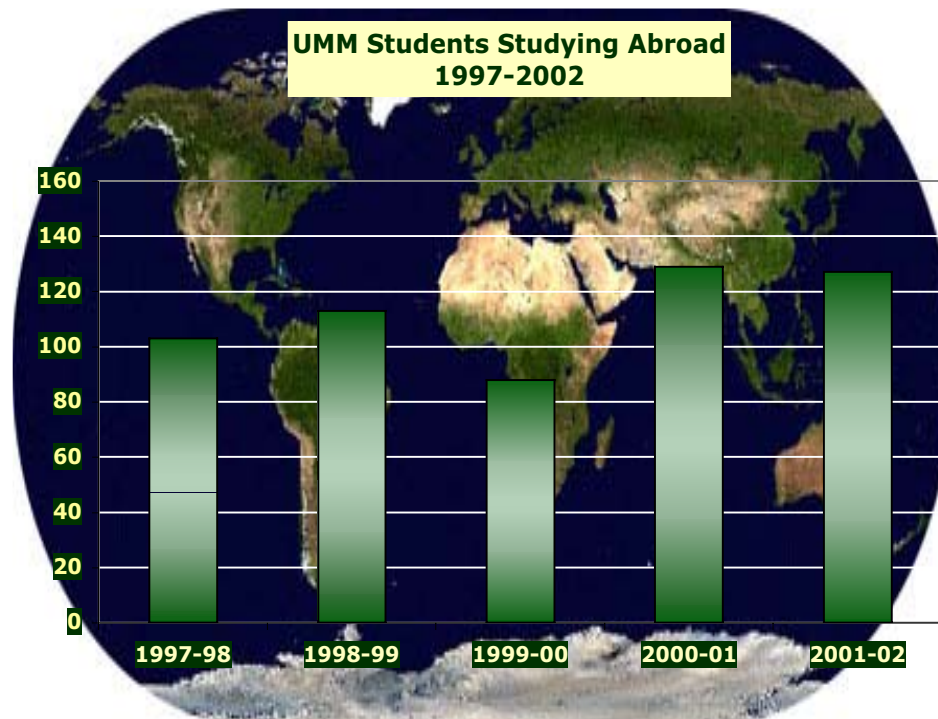
Follow this and additional works at: <https://digitalcommons.morris.umn.edu/institutionaldata>

Recommended Citation

University of Minnesota, Morris Office of Institutional Research, "Institutional Data Book 2002-2003" (2003). *Institutional Effectiveness and Research Reports*. 12.
<https://digitalcommons.morris.umn.edu/institutionaldata/12>

This Report is brought to you for free and open access by the Disciplines and Departments at University of Minnesota Morris Digital Well. It has been accepted for inclusion in Institutional Effectiveness and Research Reports by an authorized administrator of University of Minnesota Morris Digital Well. For more information, please contact skulann@morris.umn.edu.

University of Minnesota, Morris



Institutional Data Book

2002-2003

July 2003

INSTITUTIONAL DATA BOOK
UNIVERSITY OF MINNESOTA, MORRIS
2002-2003

Prepared by the
UMM Office of Institutional Research

July 2003

URL: <http://www.mrs.umn.edu/academic/instres.html>

The University of Minnesota is an equal opportunity educator and employer.

TABLE OF CONTENTS

ORGANIZATIONAL STRUCTURE

UMM Organizational Chart as of January 2003. 1

FINANCIAL AND STAFFING INFORMATION

Most Recent Expenditures of General Operations and Maintenance Funds. 3

Proportion of Expenditures of General Operations and Maintenance Funds Devoted to the Academic Divisions,
Academic Support Services, and Administrative Services (Graphic). 4

Five-Year Summary of Total Expenditures of General Operations and Maintenance Funds. 5

Five-Year Summary of Expenditures for Compensation from the General Operations and Maintenance Funds. 6

Five-Year Summary of Supplies, Expense, and Equipment Expenditures from the General Operations and Maintenance Funds. 7

Trends in Total Expenditures of General Operations and Maintenance Funds (Graphic). 8

Revenues and Expenditures from IPEDS Reports Supplied by Central Administration 9

Five-Year Summary of Financial Aid Distributed. 10

Tuition, Fees, Room and Board Rates. 11

Most Recent Academic, Civil Service, and Bargaining Unit Staffing. 12

Distribution of Faculty and Staff for 2002-2003 (Graphic). 13

Five-Year Summary of Academic, Civil Service, Bargaining Unit Staffing by Occupational Classification. 14

Five-Year Summary of Academic, Civil Service, and Bargaining Unit Staffing by Functional Unit. 15

Ten-Year Staffing Trends (Part 1) (Graphic). 16

Ten-Year Staffing Trends (Part 2) (Graphic) 17

STUDENT INFORMATION

Thirty-Year Summary of Enrollment, Aptitude, and Demographic Information for the UMM Student Body. 19

Change in the High School Ranks of Entering Freshmen from '98 to '02 (Graphic). 20

Change in Freshman ACT Composite Scores from '98 to '02 (Graphic) 21

Origin of the Fall 2002 Student Body (Graphic). 22

Five-Year Summary of Headcount Enrollment for the University of Minnesota System. 23

Fall Headcount Enrollments from 1960 to 2002 (Graphic). 24

Five-Year Summary of Full-Year-Equivalent Enrollment for the University of Minnesota System. 25

STUDENT INFORMATION (Continued)

Consistency in FYE and Headcount Enrollments (Graphic) 26

Five-Year Summary of Fall Headcount of Minority Student Enrollment for the University of Minnesota System. 27

Enrollment Projections for UMM. 28

Out-of-State and Foreign Student Enrollments. 29

UMM Student Study Abroad Enrollments. 30

Study Abroad as Percentage of Degrees Granted & Total Enrollment (Graphic). 31

Cohort Retention/Graduation Rates for UMM Entering Freshmen. 32

Cohort Retention and Graduation Rates (Graphic). 33

Type of Postbaccalaureate Training of UMM Graduates. 34

Occupational Level of UMM Graduates. 35

ACADEMIC PROGRAM INFORMATION

Five-Year Summary of Declared Majors of the UMM Student Body. 37-38

Distribution of Declared Majors, 1998 and 2002 (Graphic). 39

Five-Year Summary of Degrees Granted by Major. 40-41

Most Recent Student:Faculty Ratios by Division and Discipline. 42-43

Ten-Year Trend in Student Enrollments in Courses Offered by Each Academic Division (Graphic) 44

Ten-Year Trend in FTE Faculty at UMM by Division (Graphic). 45

Most Recent Statistics by Discipline on Enrollment, Classes, and Faculty. 46-47

Faculty Line Items and FTE Teaching Positions, 1997 to 2003. 48

FTE and Line Faculty Positions by Division from 1993 to 2003 (Graphic). 49

Five-Year Summary of Average Salary for Full-Time Teaching Faculty by Rank and Sex. 50

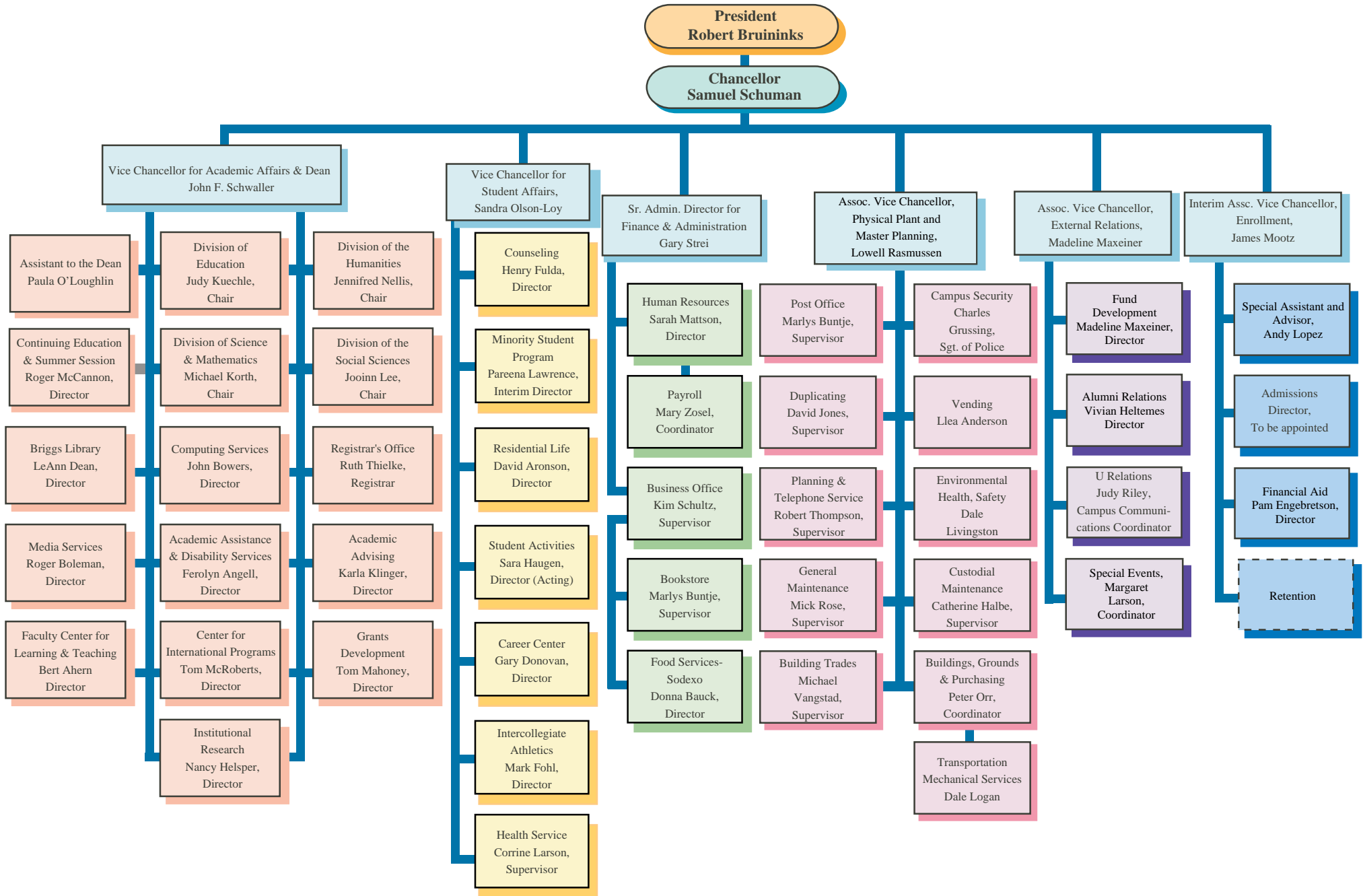
Percent of Faculty Who are Female, Minority, or Tenured. 51

Percentage of Total Faculty Who are Tenured, Women, or Minority (Graphic). 52

INDEX. 53

(January 27, 2003)

Administrative Organization - 2002-03 University of Minnesota, Morris



FINANCIAL AND STAFFING INFORMATION

Information is provided on the expenditure of the general operations and maintenance fund and any legislative special appropriations for that particular year. The table shows actual expenditures, a more accurate financial indicator than the printed budget. Five-year summaries of that same information are also provided showing the total amount and separate summaries for compensation and supplies, expense, and equipment expenditures. It should be noted that the financial information may show only a rough correspondence to that provided by the central administration for the University as a whole because of differences in methods of collection and aggregation of the data. Revenue and expenditure data from the most recent IPEDS reports prepared by the central administration is also included. The financial charts show that while, over the past five years, total college expenditures have risen substantially, the increase is almost entirely the result of normal salary increases with little increase in supplies, expense, and equipment expenditures. The pie diagram indicates the proportion of expenditures most directly related to the academic program as against those for administrative support.

Financial aid information for the past five years shows the actual distribution of aid including the number of eligible recipients and the average award per student. The information comes from the annual report from the Financial Aid Office. A table showing trends in tuition, fees, room and board is included.

Staffing counts include part-time, temporary staff, but do not include student employment. Teaching faculty are shown under the category of "Instruction and Research," but there are additional administrative faculty appearing under the categories of "Academic Support," "Executive Management," and "Support Professionals." The reader is encouraged to study the definitions on the tables in order to understand which units are included under each of the categories shown. The information in the five-year summaries is broken down, first, by occupational classification and, secondly, by the principal function performed by the employees. The charts on staffing trends show that while there were small increases in staffing levels and some shifts of employees from one unit to another, total staffing has remained relatively stable for the past five years.

University of Minnesota, Morris
2001-2002 Expenditures from the General Operations and Maintenance Fund
and State Legislative Special Appropriations

1002 Expenditures 2001-02
--

Item	Salaries	Fringe Benefits	SE&E	Total
SUPPORT SERVICES				
Administration	\$1,029,019	\$302,776	\$622,751	\$1,954,546
Student Services	\$1,657,275	\$459,314	\$1,747,176	\$3,863,765
Intercollegiate Athletics	\$358,108	\$93,374	\$425,377	\$876,859
Plant Services	\$2,076,746	\$585,492	\$1,334,053	\$3,996,291
	<u>\$5,121,148</u>	<u>\$1,440,956</u>	<u>\$4,129,357</u>	<u>\$10,691,461</u>
ACADEMIC SERVICES				
Administration	\$598,556	\$162,391	\$141,153	\$902,100
Computing Services	\$420,897	\$128,396	\$111,764	\$661,057
Continuing Education-Morris	\$573,557	\$98,100	\$268,305	\$939,962
Library/Media Services	\$503,970	\$151,189	\$489,241	\$1,144,400
	<u>\$2,096,980</u>	<u>\$540,076</u>	<u>\$1,010,463</u>	<u>\$3,647,519</u>
ACADEMIC DIVISIONS				
Interdisciplinary & General	\$180,557	\$32,057	\$180,955	\$393,569
Education	\$592,134	\$155,498	\$41,809	\$789,441
Humanities	\$2,229,413	\$590,475	\$170,144	\$2,990,032
Science & Math	\$2,101,462	\$595,835	\$183,779	\$2,881,076
Social Sciences	\$1,861,336	\$538,063	\$54,075	\$2,453,474
	<u>\$6,964,902</u>	<u>\$1,911,928</u>	<u>\$630,762</u>	<u>\$9,507,592</u>
GRAND TOTALS	\$14,183,030	\$3,892,960	\$5,770,582	\$23,846,572
Tuition & Fees				\$10,270,431
Tuition Grants				(\$1,671,041)
NET COLLECTIONS				<u>\$8,599,390</u>
NET TAX FUNDS USED				\$13,576,141

--Support Services Administration includes Chancellor's Office, University Relations, Business Office, VC Finance, Security (included with Plant beginning 1996-97), and Post Office.

--Academic Services Administration includes Vice Chancellor for Academic Affairs Office.

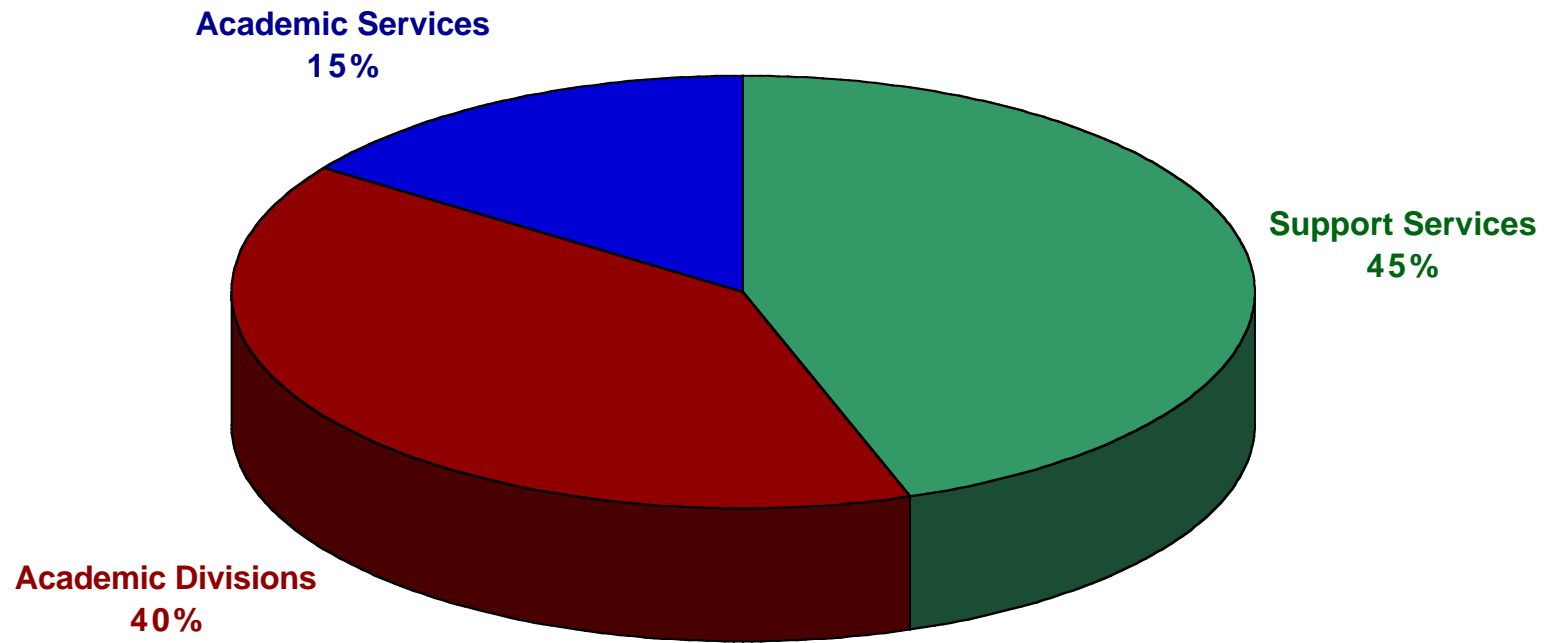
--Continuing Education items are from a University-wide source, not part of the UMM budget base.

--Academic Divisions Interdisciplinary and General item includes unassigned instruction from all four Divisions, Educational Development Program, Interdisciplinary courses, faculty recruiting and travel support.

--Tuition and Fees includes the gross Tuition to be collected and also includes Continuing Education evening and day school tuition.

--Tuition Grants includes all waivers issued to students who attend UMM.

**Total Expenditures from the O&M
Fund for 2001-2002**



University of Minnesota, Morris
A Five-Year Summary of Total Expenditures from the
General Operations and Maintenance Fund and
State Legislative Special Appropriations

Total Expenditures 1997-02

	1997-98	1998-99	1999-2000	2000-2001	2001-2002
SUPPORT SERVICES					
Administration	\$1,097,815	\$1,126,674	\$1,212,145	\$1,695,385	\$1,954,546
Student Services	\$2,593,093	\$3,194,199	\$3,251,869	\$3,490,392	\$3,863,765
Inter. Athletics	\$613,438 #	\$659,384	\$674,184	\$812,921	\$876,859
Plant Services	\$2,824,476	\$3,186,478	\$3,535,807	\$3,966,075	\$3,996,291
	<u>\$7,128,822</u>	<u>\$8,166,735</u>	<u>\$8,674,005</u>	<u>\$9,964,773</u>	<u>\$10,691,461</u>
ACADEMIC SERVICES					
Administration	\$591,453	\$694,959	\$733,376	\$692,336	\$902,100
Computing Services	\$518,509	\$475,481	\$543,782	\$697,296	\$661,057
Continuing Ed-Morris	\$597,784	\$751,235	\$850,196	\$794,127	\$939,962
Library/Media Services	\$980,500	\$1,025,681	\$1,124,436	\$1,166,341	\$1,144,400
	<u>\$2,688,246</u>	<u>\$2,947,356</u>	<u>\$3,251,790</u>	<u>\$3,350,100</u>	<u>\$3,647,519</u>
ACADEMIC DIVISIONS					
Interdisc. & General	\$197,963	\$370,586	\$487,531	\$407,732	\$393,569
Education	\$652,497	\$669,536	\$723,701	\$761,207	\$789,441
Humanities	\$2,556,417	\$2,784,922	\$2,961,178	\$3,081,514	\$2,990,032
Science & Math	\$2,398,159	\$2,443,049	\$2,681,868	\$2,862,071	\$2,881,076
Social Sciences	\$2,066,203	\$2,142,917	\$2,263,192	\$2,293,548	\$2,453,474
	<u>\$7,871,239</u>	<u>\$8,411,010</u>	<u>\$9,117,470</u>	<u>\$9,406,072</u>	<u>\$9,507,592</u>
GRAND TOTALS	\$17,688,307	\$19,525,101	\$21,043,265	\$22,720,945	\$23,846,572

--Support Services Administration includes Chancellor's Office, University Relations, Business Office, VC Finance, Security (included with Plant beginning 1996-97), and Post Office.

--Academic Services Administration includes Vice Chancellor for Academic Affairs Office.

--Continuing Education items are from a University-wide source, not part of the UMM budget base.

--Academic Divisions Interdisciplinary and General item includes unassigned instruction from all four Divisions, Educational Development Program, Interdisciplinary courses, faculty recruiting and travel support.

#Reflects \$50,000 in new funds for women's athletics.

University of Minnesota, Morris
A Five-Year Summary of Expenditures for Compensation from the
General Operations and Maintenance Fund and State Legislative Special Appropriations

Compensation

	1997-98	1998-99	1999-00	2000-01	2001-02
SUPPORT SERVICES					
Administration	\$863,754	\$901,190	\$912,798	\$1,236,688	\$1,331,795
Student Services	\$1,602,642	\$1,732,728	\$1,826,061	\$2,093,231	\$2,116,589
Inter. Athletics	\$310,059 #	\$345,921	\$371,789	\$424,891	\$451,482
Plant Services	\$2,089,238	\$2,077,429	\$2,250,256	\$2,467,719	\$2,662,238
	<u>\$4,865,693</u>	<u>\$5,057,268</u>	<u>\$5,360,904</u>	<u>\$6,222,529</u>	<u>\$6,562,104</u>
ACADEMIC SERVICES					
Administration	\$492,800	\$618,143 *	\$635,884	\$577,023	\$760,947
Computing Services	\$355,311	\$400,548	\$433,518	\$517,169	\$549,293
Continuing Ed-Morris	\$423,567	\$495,275	\$569,493	\$550,905	\$671,657
Library/Media Services	\$569,240	\$602,254	\$625,466	\$603,424	\$655,159
	<u>\$1,840,918</u>	<u>\$2,116,220</u>	<u>\$2,264,361</u>	<u>\$2,248,521</u>	<u>\$2,637,056</u>
ACADEMIC DIVISIONS					
Interdisc. & General	\$78,570	\$240,571 **	\$287,542	\$231,800	\$212,614
Education	\$605,943	\$635,899	\$666,575	\$704,229	\$747,632
Humanities	\$2,456,510	\$2,657,948	\$2,736,844	\$2,860,633	\$2,819,888
Science & Math	\$2,175,388	\$2,260,393	\$2,374,061	\$2,616,182	\$2,697,297
Social Sciences	\$1,985,213	\$2,080,917	\$2,186,022	\$2,218,167	\$2,399,399
	<u>\$7,301,624</u>	<u>\$7,875,728</u>	<u>\$8,251,044</u>	<u>\$8,631,011</u>	<u>\$8,876,830</u>
GRAND TOTALS	\$14,008,235	\$15,049,216	\$15,876,309	\$16,551,156	\$18,075,990

--Support Services Administration includes Chancellor's Office, University Relations, Business Office, VC Finance, Security (included with Plant beginning 1996-97), and Post Office.

--Academic Services Administration includes Vice Chancellor for Academic Affairs Office.

--Continuing Education items are from a University-wide source, not part of the UMM budget base.

--Academic Divisions Interdisciplinary and General item includes unassigned instruction from all four Divisions, Educational Development Program, Interdisciplinary courses, faculty recruiting and travel support.

#Reflects new funds for women's athletics. *Reflects new Center for Small Towns budget. **Includes Summer Session salaries.

University of Minnesota, Morris
A Five-Year Summary of Supplies, Expense, and Equipment Expenditures from the
General Operations and Maintenance Fund and State Legislative Special Appropriations

SE&E

	1997-98	1998-99	1999-00	2000-01	2001-02
SUPPORT SERVICES					
Administration	\$234,061	\$225,484	\$299,347	\$458,697	\$622,751
Student Services	\$990,451	\$1,461,471	\$1,425,808	\$1,397,161	\$1,747,176
Inter. Athletics	\$303,379 *	\$313,463	\$302,395	\$388,030	\$425,377
Plant Services	<u>\$735,238</u>	<u>\$1,109,049</u>	<u>\$1,285,551</u>	<u>\$1,498,356</u>	<u>\$1,334,053</u>
	<u>\$2,263,129</u>	<u>\$3,109,467</u>	<u>\$3,313,101</u>	<u>\$3,742,244</u>	<u>\$4,129,357</u>
ACADEMIC SERVICES					
Administration	\$98,653	\$76,816 **	\$97,492	\$115,313	\$141,153
Computing Services	\$163,198	\$74,933	\$110,264	\$180,127	\$111,764
Continuing Ed-Morris	\$174,217	\$255,960	\$280,703	\$243,222	\$268,305
Library/Media Services	<u>\$411,260</u>	<u>\$423,427</u>	<u>\$498,970</u>	<u>\$562,917</u>	<u>\$489,241</u>
	<u>\$847,328</u>	<u>\$831,136</u>	<u>\$987,429</u>	<u>\$858,357</u>	<u>\$1,010,463</u>
ACADEMIC DIVISIONS					
Interdisc. & General	\$119,393	\$130,015	\$199,989	\$175,932	\$180,955
Education	\$46,554	\$33,637	\$57,126	\$56,978	\$41,809
Humanities	\$99,907	\$126,974	\$224,334	\$220,881	\$170,144
Science & Math	\$222,771	\$182,656	\$307,807	\$245,889	\$183,779
Social Sciences	<u>\$80,990</u>	<u>\$62,000</u>	<u>\$77,170</u>	<u>\$75,381</u>	<u>\$54,075</u>
	<u>\$569,615</u>	<u>\$535,282</u>	<u>\$866,426</u>	<u>\$775,061</u>	<u>\$630,762</u>
GRAND TOTALS	\$3,680,072	\$4,475,885	\$5,166,956	\$5,375,662	\$5,770,582

--Support Services Administration includes Chancellor's Office, University Relations, Business Office, VC Finance, Security (included with Plant beginning 1996-97), and Post Office.

--Academic Services Administration includes Vice Chancellor for Academic Affairs Office.

--Continuing Education items are from a University-wide source, not part of the UMM budget base.

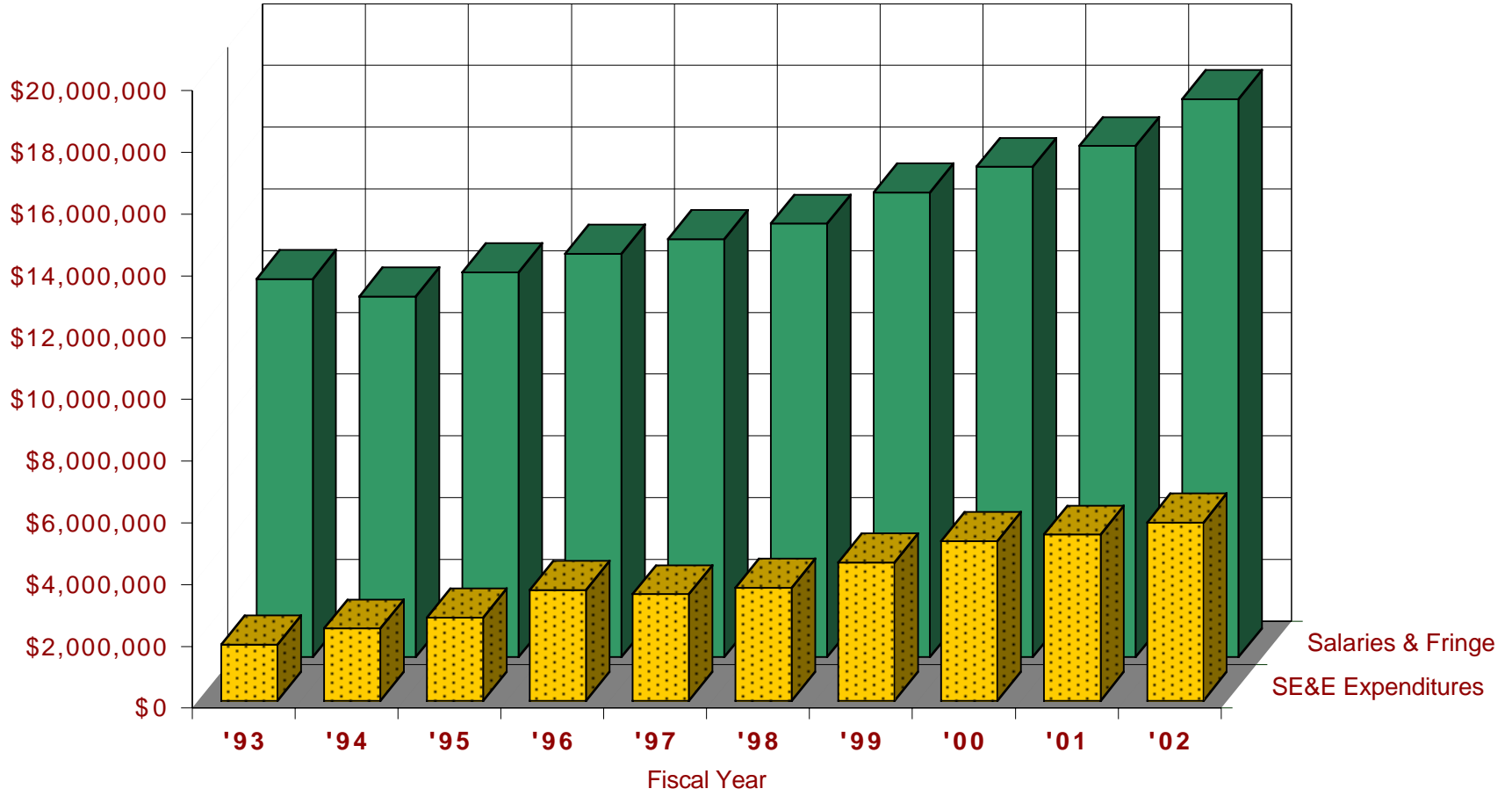
--Academic Divisions Interdisciplinary and General item includes unassigned instruction from all four Divisions, Educational Development Program, Interdisciplinary courses, faculty recruiting and travel support.

*Reflects new funds for women's athletics.

**Reflects new Center for Small Towns budget.

UMM Expenditures, O&M Fund

■ SE&E Expenditures ■ Salaries & Fringe



University of Minnesota, Morris Revenues and Expenditures
From IPEDS Reports Supplied by Central Administration

IPEDS Financial Data

		Fourth FY Prior 1997-98	Third FY Prior 1998-99	Second FY Prior 1999-2000	First FY Prior 2000-2001	Last Completed FY 2001-2002
REVENUES						
Tuition and fees		\$9,086,561	\$7,343,494	\$7,328,740	\$7,559,362	\$8,377,560
Federal appropriations		\$0	\$0	\$0	\$0	\$0
State appropriations		\$10,651,437	\$11,237,481	\$11,905,177	\$12,967,411	\$14,438,996
Local appropriations		\$0	\$0	\$0	\$0	\$0
Grants and contracts		\$3,175,553	\$5,486,689	\$4,493,919	\$5,139,024	\$4,788,512
Endowment income		\$41,781	\$61,151	\$84,569	\$92,783	\$191,383
Sales & services of educational activities		\$194,771	\$186,120	\$232,394	\$215,796	\$147,454
Auxiliary enterprises		\$5,459,690	\$5,420,078	\$5,367,119	\$5,760,148	\$6,287,844
Other		\$76,191	\$187,989	\$198,297	\$105,855	\$274,489
Total Revenues		\$28,685,984	\$29,923,002	\$29,610,215	\$31,840,379	\$34,506,238
EDUCATIONAL & GENERAL EXPENDITURES AND TRANSFERS						
Educational and General	Instruction	\$7,751,763	\$8,110,268	\$8,782,054	\$9,443,724	\$9,357,152
	Research	\$213,171	\$208,013	\$186,326	\$129,235	\$86,320
	Public services	\$153,538	\$323,876	\$521,301	\$527,982	\$696,214
	Academic support	\$2,839,041	\$2,621,971	\$3,079,818	\$3,427,132	\$3,066,797
	includes Library expenditures:	\$831,991	\$858,438	NA	NA	NA
	Student services	\$2,979,682	\$3,178,571	\$3,296,084	\$3,882,802	\$3,639,132
	Institutional support	\$1,417,157	\$1,471,476	\$1,865,335	\$2,619,347	\$2,016,886
	Operation & maintenance of plant	\$2,757,358	\$3,001,606	\$3,534,325	\$3,636,872	\$3,939,150
	Scholarships and fellowships	\$4,146,325	\$4,974,324	\$4,613,712	\$4,441,521	\$4,989,048
	Non-mandatory transfers	(\$1,013,493)	(\$939,299)	(\$1,354,452)	(\$1,044,425)	\$0
Mandatory transfers	\$13,184	\$100,235	\$95,447	\$8,249	\$0	
Total Educational and General		\$21,257,726	\$23,051,041	\$24,619,950	\$27,072,439	\$27,790,699
AUXILIARY ENTERPRISES						
Auxiliary Enterprises	Expenditures	\$5,429,582	\$5,211,679	\$5,337,345	\$5,720,870	\$6,058,400
	Mandatory transfer	\$205,415	\$194,317	\$0	\$0	\$0
	Nonmandatory transfer	\$9,286	\$159,776	\$532,453	(\$127,310)	\$0
Total Auxiliary Enterprises		\$5,644,283	\$5,565,772	\$5,869,798	\$5,593,560	\$6,058,400
HOSPITALS		\$0	\$0	\$0	\$0	\$0
INDEPENDENT OPERATIONS		\$0	\$0	\$0	\$0	\$0
TOTAL CURRENT FUNDS EXPENDITURES AND TRANSFERS		\$26,902,009	\$28,616,813	\$30,489,748	\$32,665,999	\$33,849,099

University of Minnesota, Morris
A Five-Year Summary of Financial Aid Distributed

Financial Aid

	Amount Distributed				
	1997-98	1998-99	1999-00	2000-01	2001-02
MN State Scholarships/Grants	\$1,397,764	\$1,701,318	\$1,564,991	\$1,600,623	\$1,665,645
U of M Scholarships/Grants	\$1,257,487	\$1,581,378	\$1,409,105	\$1,235,604	\$1,746,304
Outside Scholarships/Grants	\$853,980	\$977,159	\$881,394	\$924,826	\$1,042,683
PELL Grants	\$1,034,277	\$1,230,413	\$1,168,932	\$1,264,360	\$1,349,412
SEOG Grants	\$713,968	\$656,243	\$657,715	\$656,052	\$656,052
Veteran's	\$89,247	\$95,340	\$89,573	\$99,269	\$85,920
Morris Acad. Partners/Admin. Internships	\$91,000	\$110,500	\$102,375	\$106,250	\$107,000
Minority Mentorship Program	\$11,411	\$11,666	\$11,000	\$10,000	\$11,500
TOTAL GRANTS	\$5,449,134	\$6,364,017	\$5,885,085	\$5,896,984	\$6,664,516
FED/DIR Subsidized/Unsub Loans	\$3,829,055	\$4,144,201	\$4,121,492	\$4,535,130	\$4,857,320
SELF Loans	\$869,241	\$1,343,906	\$1,654,393	\$1,510,696	\$1,754,307
Perkins Loans	\$204,880	\$191,639	\$241,591	\$359,748	\$203,003
PLUS Loans	\$130,509	\$12,200	\$7,100	\$24,700	\$47,002
Other Loans	\$42,726	\$15,133	\$14,800	\$52,980	\$34,750
TOTAL LOANS	\$5,076,411	\$5,707,079	\$6,039,376	\$6,483,254	\$6,896,382
Federal Work-Study	\$440,215	\$414,458	\$383,513	\$322,375	\$388,833
State Work-Study	\$146,517	\$193,333	\$263,729	\$392,133	\$358,065
Other U of M Employment	\$169,613	\$169,768	\$145,455	\$222,567	\$254,499
TOTAL EMPLOYMENT	\$756,345	\$777,559	\$792,697	\$937,075	\$1,001,397
GRAND TOTALS	\$11,281,890	\$12,848,655	\$12,717,158	\$13,317,313	\$14,562,295
Unduplicated Recipients	1,736	1,786	1,681	1,796	1,581
Average Aid Per Student	\$6,499	\$7,194	\$7,565	\$7,415	\$9,211
Cost of Resident Tuition/Fees/Rm/Bd	\$8,585	\$8,880	\$9,222	\$9,669	\$11,838

University of Minnesota, Morris
A Summary of Tuition, Fees, Room and Board Rates

Tuition Costs

	1993-94	1994-95	1995-96	1996-97	1997-98	1998-99	1999-00**	2000-01	2001-02	2002-03
<u>RATES PER TERM</u>										
<i>Resident per credit tuition</i>	\$74.00	\$77.70	\$83.75	\$89.20	\$93.90	\$98.00	\$159.25	\$167.75	\$184.95	\$212.70
Lower Division										
Upper Division										
<i>Mandatory fees</i>										
Technology	--	--	--	--	\$35.00	\$35.00	\$52.50	\$52.50	\$52.50	\$52.50
Health Service	\$30.00	\$30.00	\$35.00	\$35.00	\$35.00	\$35.00	\$52.50	\$52.50	\$52.50	\$52.50
Activities	\$49.00	\$49.00	\$51.00	\$51.00	\$51.00	\$51.00	\$78.00	\$78.00	\$85.00	\$85.00
Student Center	\$24.00	\$24.00	\$24.00	\$24.00	\$24.00	\$24.00	\$39.00	\$39.00	\$39.00	\$39.00
Intercollegiate Athletics University				\$10.00	\$10.00	\$10.00	\$15.00	\$15.00	\$15.00	\$15.00
Regional Fitness Center								\$75.00	\$150.00	
Total	<u>\$103.00</u>	<u>\$103.00</u>	<u>\$110.00</u>	<u>\$120.00</u>	<u>\$155.00</u>	<u>\$155.00</u>	<u>\$267.00</u>	<u>\$267.00</u>	<u>\$349.00</u>	<u>\$439.00</u>
<i>Room charges:</i>										
Dorm - double room	\$455.00	\$487.00	\$538.00	\$558.00	\$578.00	\$593.00	\$915.00	\$956.00	\$1,040.00	\$1,100.00
Apartments - double room	\$570.00	\$606.00	\$657.00	\$660.00	\$665.00	\$680.00	\$1,050.00	\$1,100.00	\$1,190.00	\$1,250.00
<i>19-meal plan</i>	\$600.00	\$610.00	\$620.00	\$640.00	\$660.00	\$680.00	\$1,040.00	\$1,095.00	\$1,170.00	\$1,190.00
<u>ANNUAL RATES</u>										
Resident tuition (15-20 cr/term)	\$3,330.00	\$3,496.50	\$3,858.75	\$4,194.00	\$4,405.50	\$4,596.00	\$4,777.50	\$5,032.50	\$5,548.50	\$6,381.00
Mandatory fees	\$309.00	\$309.00	\$330.00	\$360.00	\$465.00	\$465.00	\$534.00	\$534.00	\$698.00	\$878.00
<i>Room and board*</i>	<u>\$3,165.00</u>	<u>\$3,291.00</u>	<u>\$3,474.00</u>	<u>\$3,594.00</u>	<u>\$3,714.00</u>	<u>\$3,819.00</u>	<u>\$3,910.00</u>	<u>\$4,102.00</u>	<u>\$4,470.00</u>	<u>\$4,580.00</u>
<i>Comprehensive cost</i>	\$6,804.00	\$7,096.50	\$7,662.75	\$8,148.00	\$8,584.50	\$8,880.00	\$9,221.50	\$9,668.50	\$10,716.50	\$11,839.00
	<u>'92 to '93</u>	<u>'93 to '94</u>	<u>'94 to '95</u>	<u>'95 to '96</u>	<u>'96 to '97</u>	<u>'97 to '98</u>	<u>'98 to '99</u>	<u>'99 to '00</u>	<u>'00 to '01</u>	<u>'01 to '02</u>
% Increase in annual tuition	2.1%	5.0%	10.4%	8.7%	5.0%	4.3%	3.9%	5.3%	10.3%	15.0%
% Increase in comprehensive cost	3.1%	4.3%	8.0%	6.3%	5.4%	3.4%	3.8%	4.8%	10.8%	10.5%

*Based on rates for double room in a dorm plus 19-meal plan.

**First year on semesters (2 terms/year) rather than quarters (3 terms/year).

University of Minnesota, Morris
Academic, Civil Service, and Bargaining Unit Staffing
for 2002-03

Staffing by Dept. 2002-03

	Instruction and Research	Academic Support	Chancellor's Office	Intercol. Athletics	Student Services	Business Services	Plant Services	Auxiliary Enterprises	Total
Teaching Faculty	127.6	1.5	-	4.5	-	-	-	-	133.6
Executive Management	-	1.0	2.0	-	1.0	1.0	1.0	-	6.0
Support Professionals	-	17.2	1.8	8.6	22.2	2.3	3.0	1.0	55.9
Technical Employees	-	15.3	-	-	0.5	-	3.0	3.0	21.8
Office/Clerical	-	28.4	6.8	1.0	20.4	6.8	6.1	7.4	76.7
Crafts/Trades	-	-	-	-	-	-	18.5	-	18.5
Service Employees	-	-	-	-	-	-	23.1	31.3	54.4
Total	127.6	63.3	10.5	14.1	44.1	10.0	54.6	42.7	366.9

Definitions:

--Instruction and Research includes the academic Divisions and excludes Continuing Education instructors. The Division Chairs are counted as 0.5 under Instruction and Research and 0.5 under Academic Support. Faculty with athletic responsibilities are counted as 0.5 under Instruction and research and 0.5 under Intercollegiate Athletics.

--Academic Support includes the Vice Chancellor's Office, Library, Media Services, Academic Assistance, Computing Services, Registrar's Office, the UMM portion of Continuing Education staff, Grants Development, and Divisional Offices.

--Chancellor's Office includes University Relations, Alumni Relations, and Fund Development.

--Student Services includes the Vice Chancellor's Office, Admissions, Financial Aid, Counseling, Career Center, Health Service, Residential Life office staff, Student Activities, and Minority Student Program. Residential Life custodial staff are shown under Auxiliary Enterprises.

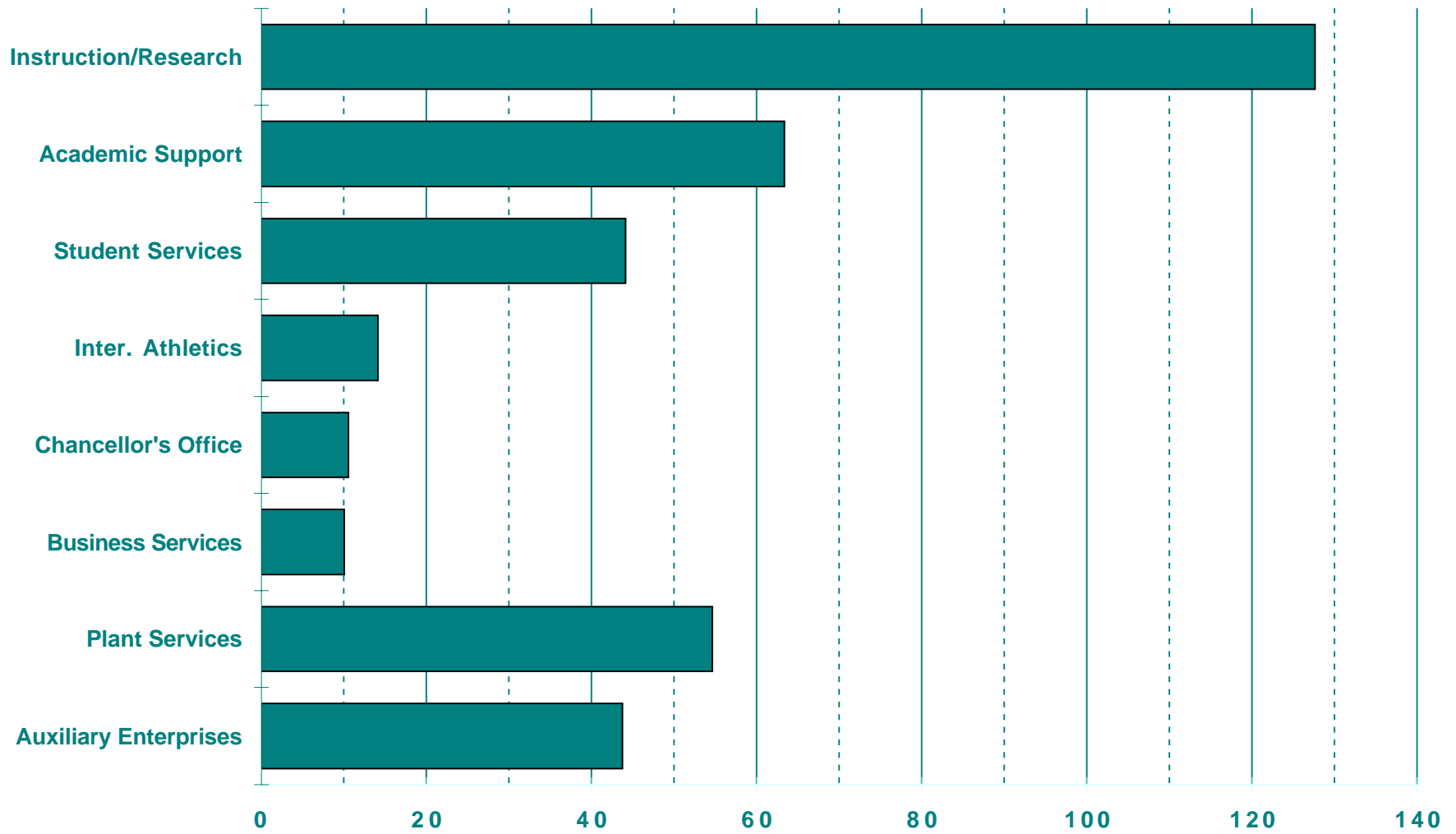
--Business Services includes the Vice Chancellor's Office and Business Office. Food Services and the Bookstore are shown under Auxiliary Enterprises.

--Plant Services includes the Post Office, Campus Security, Planning, Telephone, General and Custodial Maintenance, Building Trades, Grounds, and Transportation. Duplicating and Vending are shown under Auxiliary Enterprises.

--Auxiliary Enterprises includes Food Service, Vending, Duplicating, Bookstore, and Residential Life custodial staff.

--Does not include faculty leave replacements, student employment, part-time faculty or staff employed less than 25% time.

Distribution of Faculty/Staff for 2002-2003



University of Minnesota, Morris
A Five-Year Summary of the Academic, Civil Service, and Bargaining Unit Staffing
by Occupational Classification
for 1998-2003

Staffing by Class. 1998-03

Classification	1998-99	1999-00	2000-01	2001-02	2002-03
Teaching Faculty	121.6	122.5	128.3	128.7	133.6
Executive Management	5.0	6.0	5.7	6.0	6.0
Support Professionals	51.6	49.2	50.0	55.0	55.9
Technical Employees	19.5	23.8	20.5	20.7	21.8
Office/Clerical	70.7	76.4	78.4	77.8	76.7
Crafts/Trades	17.0	18.2	18.2	18.2	18.5
Service Employees	44.4	51.2	50.4	53.4	54.4
Total	329.7	347.2	351.4	359.7	366.9

Most temporary and continuing part-time employees are counted on a percentage basis (faculty on leave are counted but not their replacements).

Definitions:

- Teaching Faculty includes budgeted line items of instructional faculty and Division Chairs.
- Executive Management includes the Chancellor and Vice Chancellors.
- Support Professionals include Student Services Directors, librarians, Computing Services Director, police, nurse, trainer, etc.
- Technical includes junior engineer, landscape supervisor, computer programmers, electronic technicians, etc.
- Office and Clerical includes clerical and office supervisory staff and assistant administrators.
- Crafts and Trades includes bargaining unit staff in skilled trades such as carpenters, electricians, plumbers, heating plant engineers, etc.
- Service includes primarily bargaining unit staff in custodial and food service positions.

University of Minnesota, Morris
A Five-Year Summary of the Academic, Civil Service, and Bargaining Unit Staffing
by Functional Unit
for 1998-2003

Staffing by Unit 1998-03

Unit	1998-99	1999-00	2000-01	2001-02	2002-03
Instruction/Research	114.4	115.4	121.5	121.4	127.6
Academic Support	51.3	54.8	52.1	52.2	63.3
Chancellor's Office	8.3	9.5	12.5	12.5	10.5
Inter. Athletics	13.3	13.3	11.8	14.4	14.1
Student Services	47.2	50.8	50.6	53.2	44.1
Business Services	17.8	17.0	17.5	17.5	10.0
Plant Services	41.3	46.2	45.5	46.5	54.6
Auxiliary Enterprises	<u>36.2</u>	<u>40.3</u>	<u>40.0</u>	<u>42.2</u>	<u>42.7</u>
Total	329.7	347.3	351.4	359.7	366.9

Note: Beginning 2002-03, Registrar's Office is shown under Academic Support rather than Student Services. Also, Post Office, Campus Security, and Transportation are shown under Plant Services rather than Business Services.

--Instruction and Research includes the academic Divisions, excludes Continuing Education. Faculty with athletic responsibilities are split between Instruction and Intercollegiate Athletics; Division Chairs are split between Instruction and Academic Support.

--Academic Support includes the Vice Chancellor's Office, Divisional Offices, Library, Media Services, Academic Assistance, Computing Services, Registrar's Office, and Grants Development Offices.

--Chancellor's Office also includes University Relations, Alumni Relations, and Fund Development.

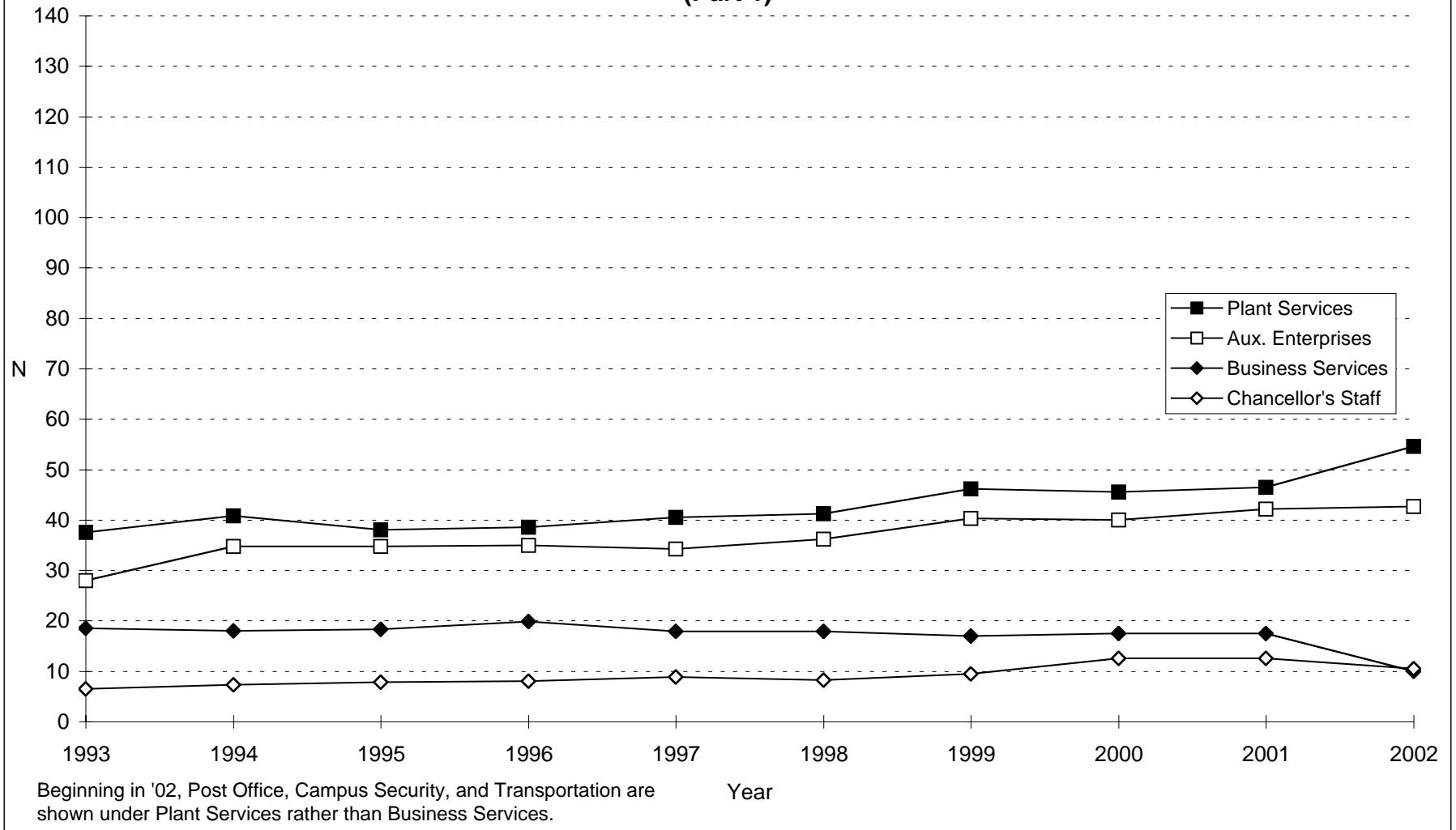
--Student Services includes the Vice Chancellor's office, Admissions, Financial Aid, Counseling, Career Center, Health Service, Residential Life office staff, Student Activities, and Minority Student Program. Residential Life custodial staff are shown under Auxiliary Services.

--Business Services includes the Vice Chancellor's Office, Business Office. Food Services and Bookstore are shown under Auxiliary Enterprises.

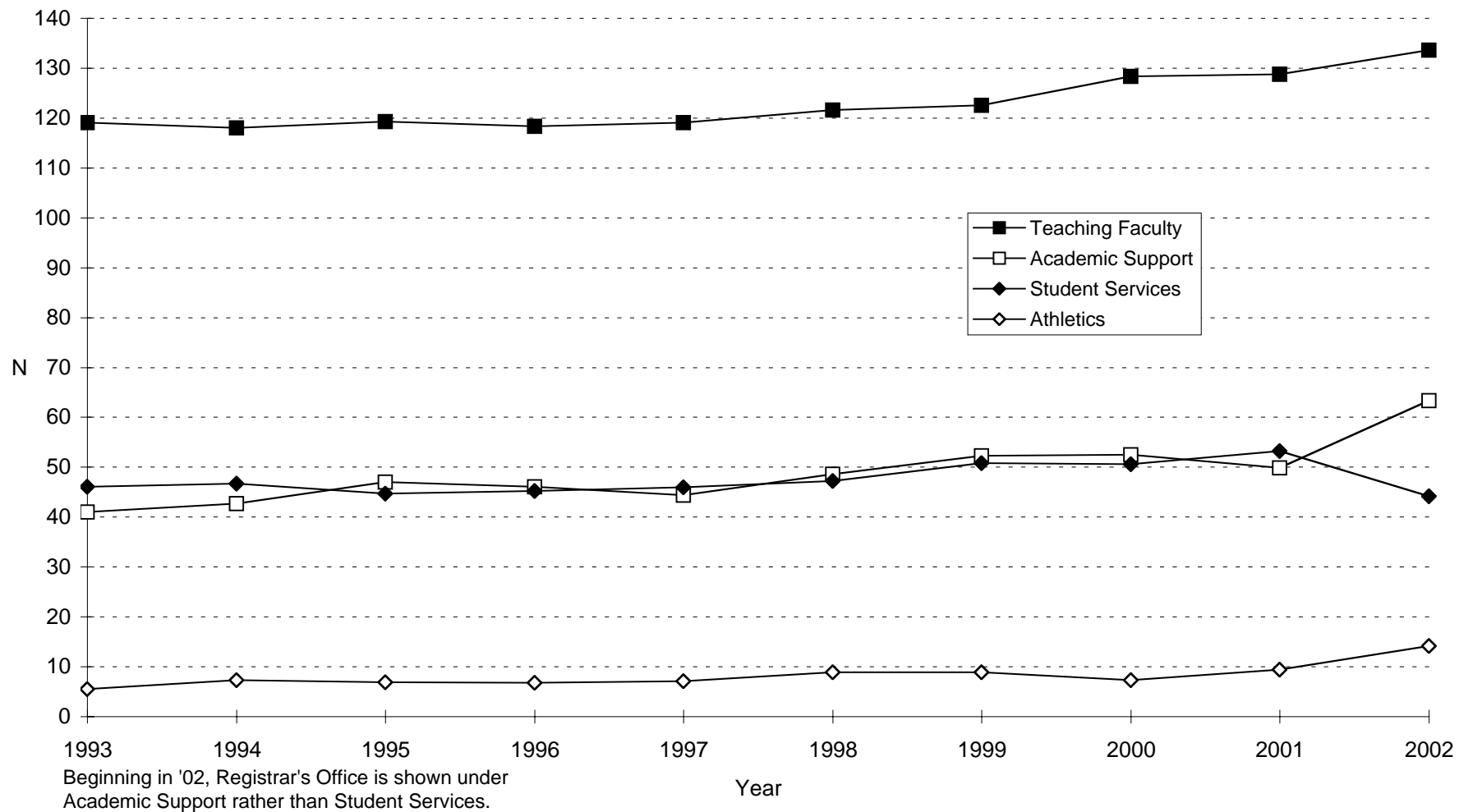
--Plant Services includes the Post Office, Campus Security, Planning, Telephone, General and Custodial Maintenance, Building Trades, Grounds, and Transportation. Duplicating and Vending are shown under Auxiliary Enterprises.

--Auxiliary Enterprises includes Food Services, Vending, Duplicating, Bookstore, and Residential Life custodial staff.

UMM Staffing Trends During the Decade (Part 1)



UMM Staffing Trends During the Decade (Part 2)



STUDENT INFORMATION

Information provided in this section has been selected primarily because it relates to enrollment and retention. The summary sheet entitled "Student Body Information" provides a brief profile of each successive freshman class as well as certain demographic information regarding the student body as a whole. The map of Minnesota shows the distribution of Minnesota students within the the student body. Changes in high school ranks and ACT scores between 1998 and 2002 are shown. New this year are a table and chart showing study abroad activity of UMM students.

The five-year summaries of headcount, FYE enrollment, and minority student enrollment show not only data for UMM but for the University system as a whole and are the official figures provided by the central administration. Fall term headcount enrollment uses the standard definition: students registered for one or more credits at the end of the second week of the fall term. Full-year equivalent (FYE) enrollments are determined by dividing the total student credit hours by the full-time credit enrollment for one year and are compiled at the end of the academic year. It should be noted that credit and non-credit enrollments for Continuing Education and Summer Session classes are not included. The charts related to enrollment show fall term headcounts at UMM since it opened in 1960 and the close relationship between headcount and FYE enrollment. Data showing the numbers of students from other states is based on the high schools from which they graduated.

A locally developed enrollment projection is shown for 2003 through 2006. It is based on the current enrollment management model being used at UMM which depends primarily on target numbers of entering freshmen and recent retention patterns. A chart shows cohort retention and graduation rates for UMM freshmen who remained at UMM and, in addition, those who transferred to any other college within the University of Minnesota system.

Data on postbaccalaureate training and entry-level occupations of the graduates is reported from a 1999 follow-up study of all graduating classes from 1964 through 1998. Graduates of the 1990's were followed up only one year after graduation.

The tables provided show only a small amount of the profile, enrollment, demographic, aptitude, student demand, grade, and follow-up information available on the UMM student body. In many instances, considerable data is available with University-wide, state, and national comparisons as well. Contact the UMM Institutional Research Office for more information.

University of Minnesota, Morris
Student Body Information

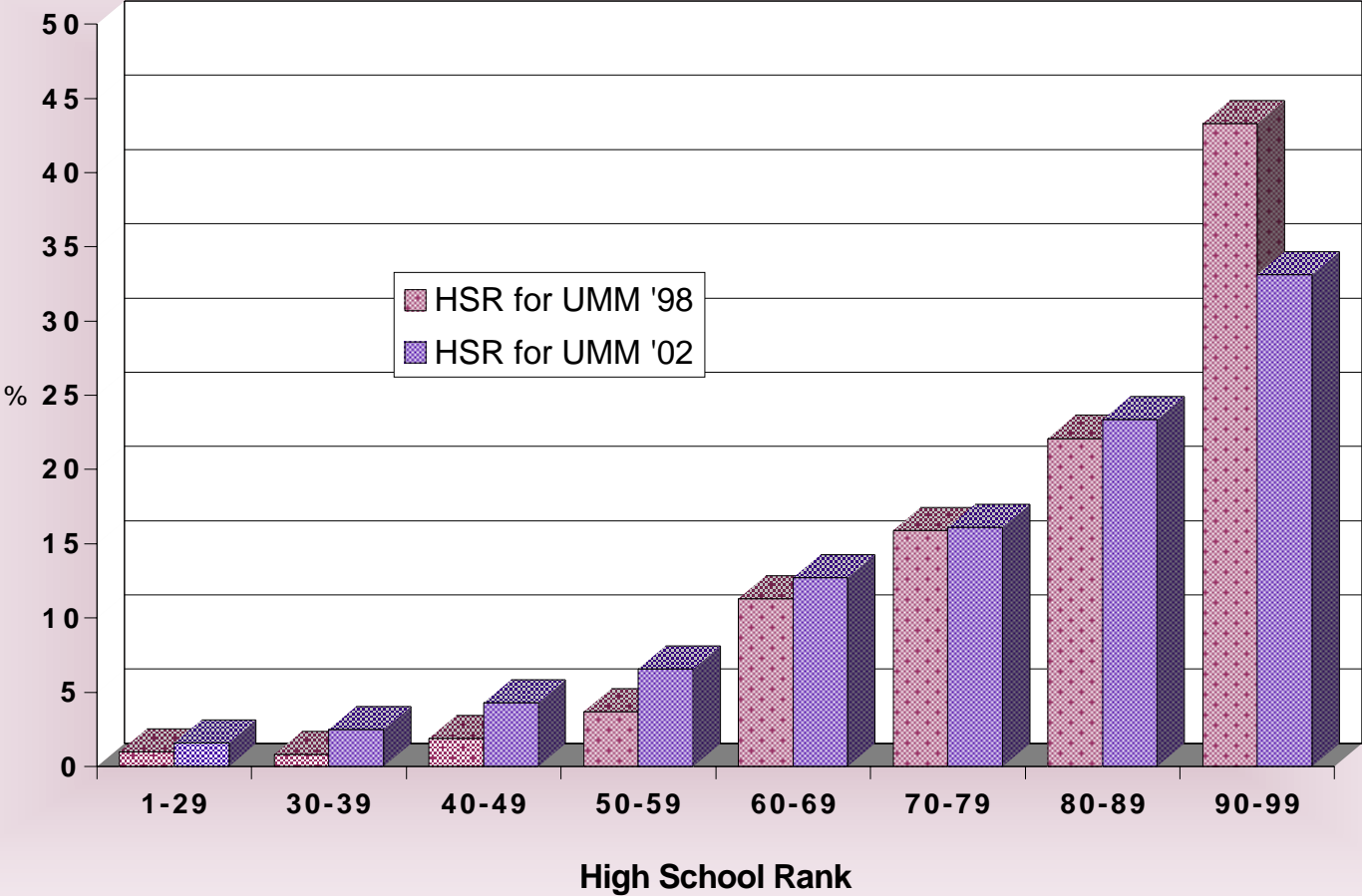
Item	1965-6	1970-1	1975-6	1980-1	1985-6	1990-1	1995-6	1998-9	1999-00	2000-01	2001-02	2002-03
ENROLLMENT												
Fall New Freshmen	418	548	504	477	468	493	534	549	457	474	480	477 *
Fall Total Headcount	984	1716	1593	1624	1682	2021	1952	1917	1867	1842	1927	1910
FYE Students		1714	1667	1588	1601	1947	1910	1907	1799	1854	1932	1894 **
Male:Female Ratio	62:38	58:42	58:42	50:50	48:52	44:56	44:56	40:60	41:59	42:58	42:58	40:60
FRESHMAN APTITUDE												
Median HSR	84	82	79	78	82	92	88	87	86	86	82	82
Upper 20% HSR	63%	58%	49%	48%	55%	85%	71%	65%	62%	65%	55%	57%
Upper 10% HSR				27%	32%	62%	46%	43%	43%	41%	32%	33%
Upper 5% HSR				14%	21%	39%	28%	28%	27%	27%	16%	22%
Median ACT English	22	22	21	21	20	23	24	24	24	24	24	24
Median ACT Mathematics	25	28	25	22	22	25	25	24	24	25	24	25
Median ACT Composite	25	26	23	22	22	25	25	24	24	25	24	25
FRESHMAN APPLICATIONS***												
Number of Applicants				775	825	1,642	1,285	1,149	1,004	1,104	1,269	1,297
% Offered Admission				95%	87%	61%	85%	87%	92%	87%	84%	82%
% Accepted Who Enrolled				65%	65%	49%	49%	55%	49%	49%	45%	45%
STUDENT ORIGIN												
Minnesota Students	98%	97%	95%	88%	80%	88%	83%	82%	82%	82%	82%	83%
Out of State Students	2%	3%	5%	12%	20%	12%	16%	18%	18%	17%	17%	16%
Within 25 Mile Radius	26%	19%	12%	13%	13%	8%	4%	5%	5%	4%	3%	3%
7 County Metro Area	10%	18%	19%	20%	13%	30%	30%	26%	28%	28%	28%	29%
Live On Campus	42%	41%	56%	59%	55%	49%	49%	49%	47%	49%	49%	47%
STUDENT:FACULTY												
FTE Faculty			87.8	88.7	96.7	123.6	118.9	120.4	121.0	129.3	129.2	132.7 **
Student:Faculty Ratio	15.6:1	19.5:1	17.5:1	17.8:1	16.9:1	15.7:1	16.2:1	15.2:1	15.4:1	14.3:1	14.9:1	14.3:1 **

*Beginning 1999-2000, the "Fall New Freshmen" figure does not include PSEO enrolled students. In fall 2002, there were 36 PSEO students enrolled at UMM.

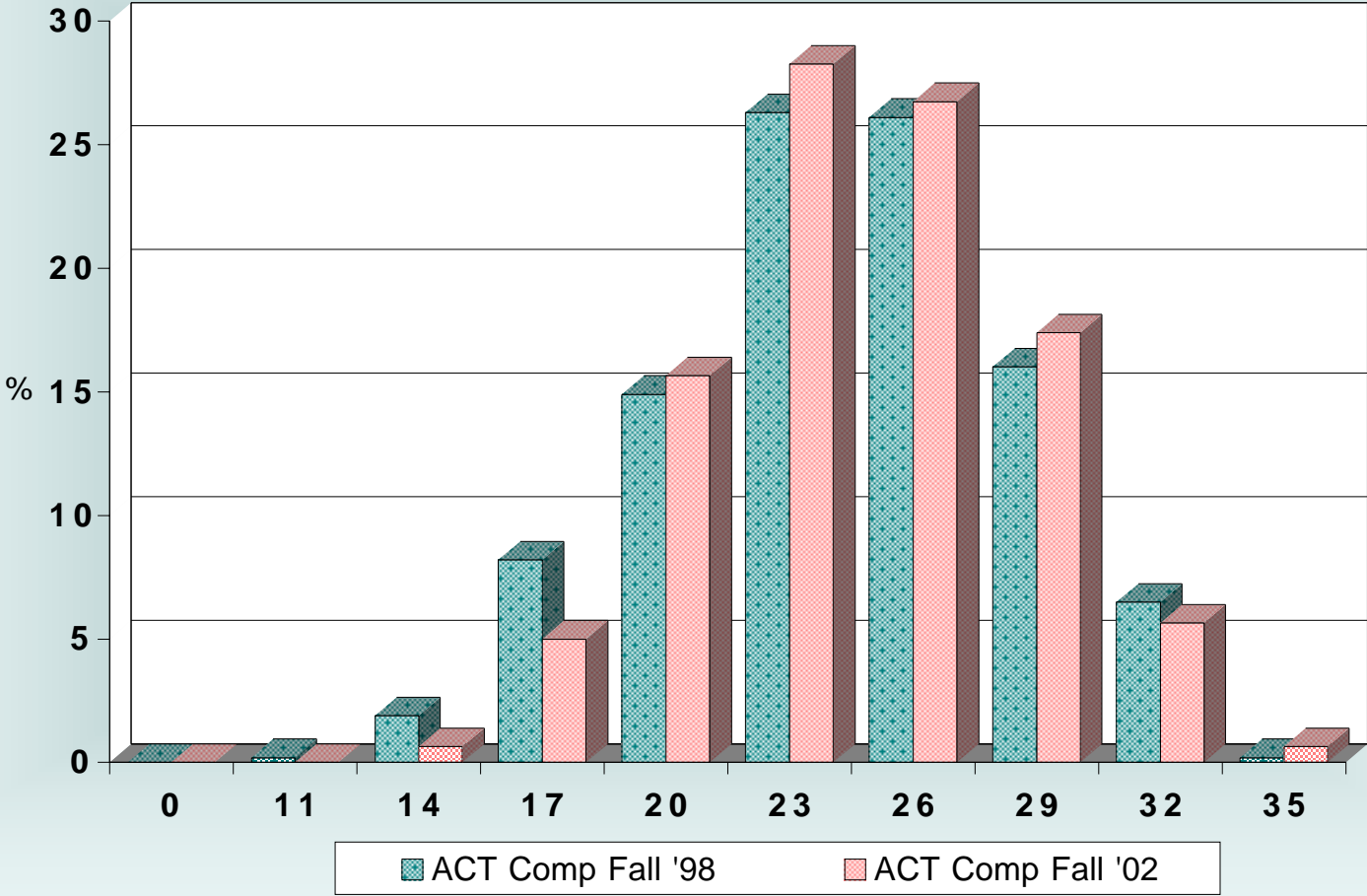
**Estimates because figures for the entire year were not available at time of printing.

***Beginning with the fall of 1990, the data regarding freshman applications has been substantially revised to more accurately reflect all-University definitions.

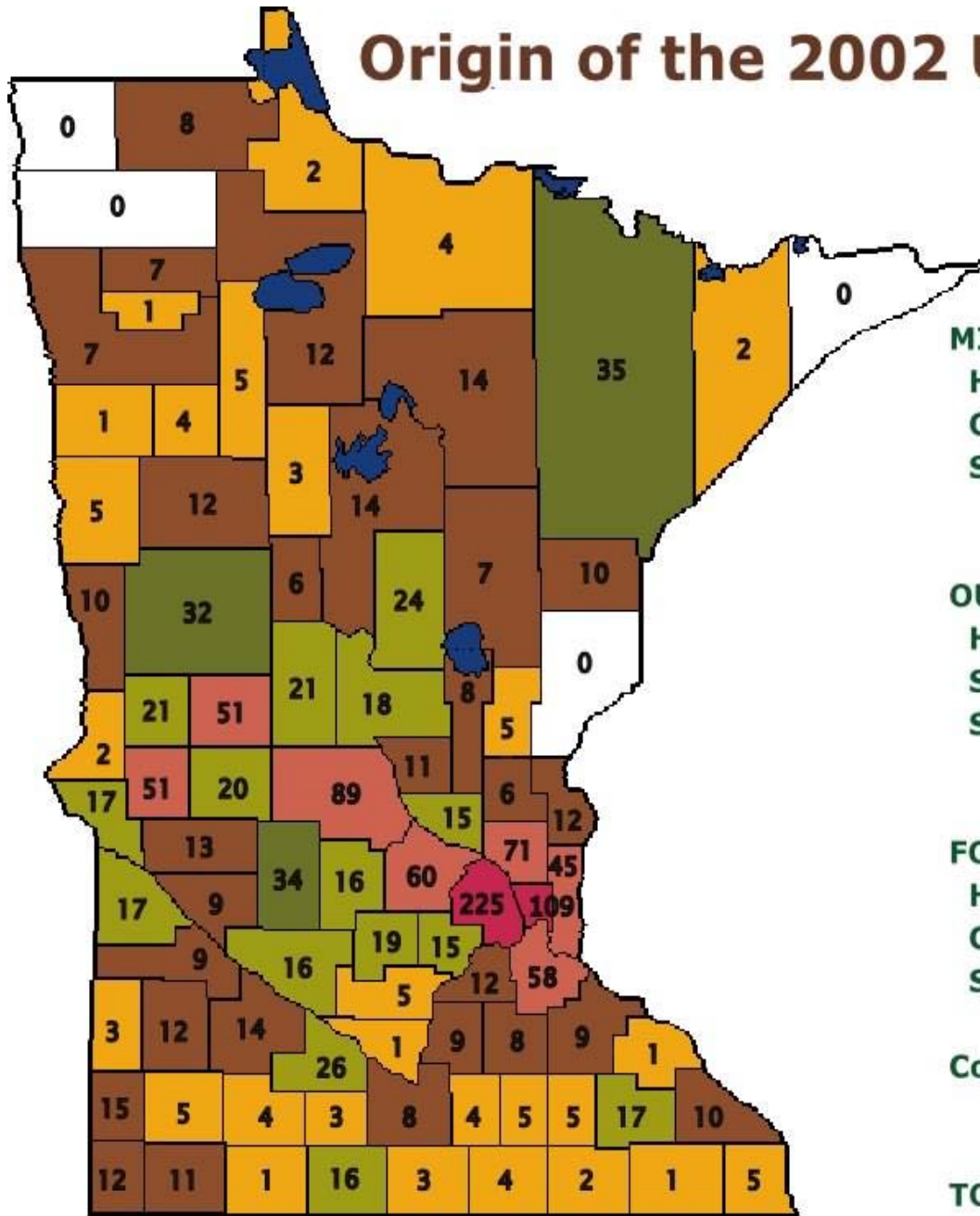
The Change in HSR Among UMM Freshmen Between Fall '98 and '02



The Change in ACT Composite Scores from Fall 1998 to Fall 2002



Origin of the 2002 UMM Student Body



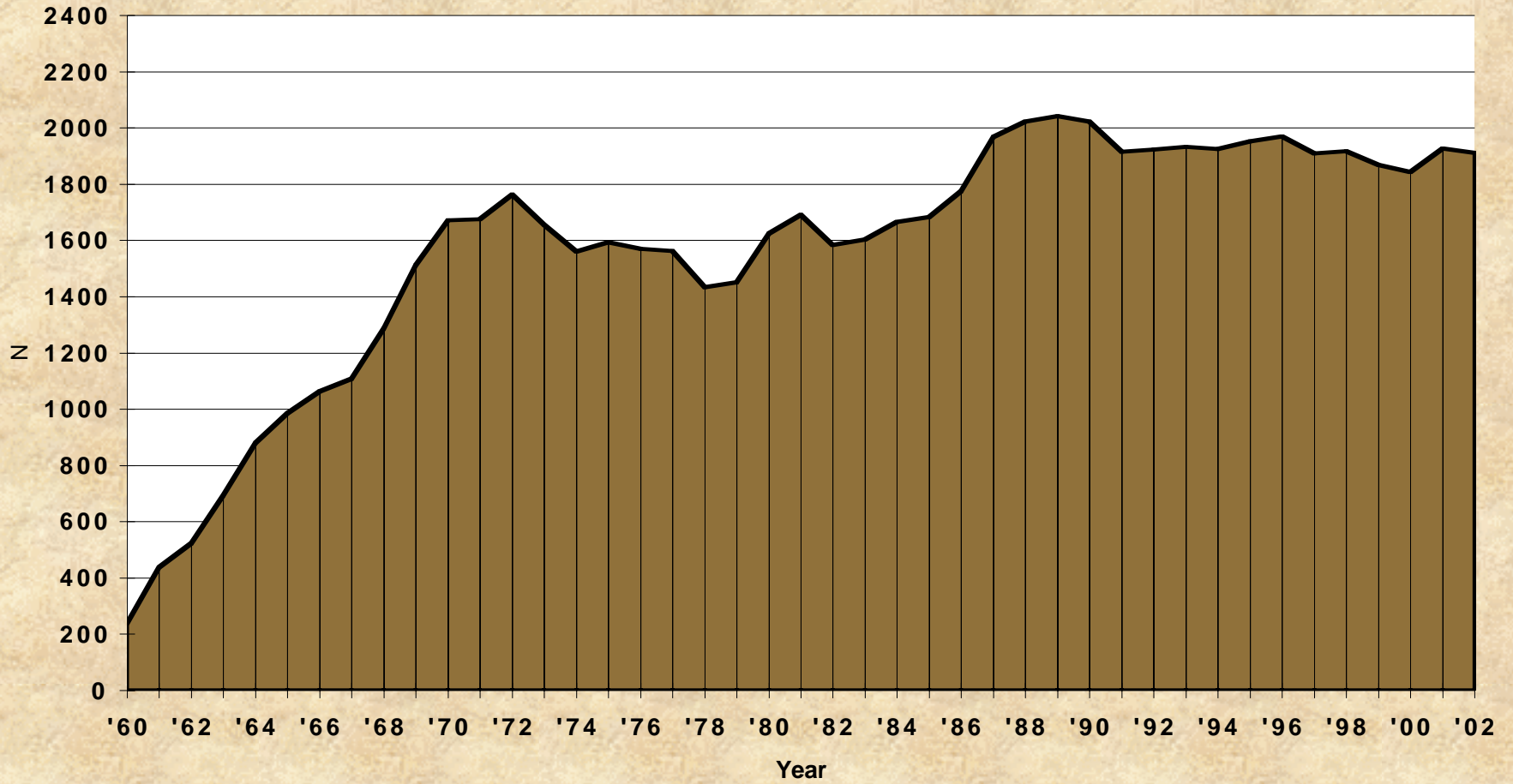
MINNESOTA			
High Schools	333		
Counties	83		
Students	1,519	(80%)	
OUT-OF-STATE			
High Schools	226		
States	31		
Students	289	(15%)	
FOREIGN			
High Schools	20		
Countries	13		
Students	25	(1%)	
Continuing Ed	77	(4%)	
TOTAL STUDENTS	1,910	(100%)	

Headcount Enrollment

University of Minnesota, Morris
A Five-Year Summary of Fall Headcount Enrollment
for the University of Minnesota System

Campus	Academic Year					Percent of Change	
	1998-99	1999-00	2000-01	2001-02	2002-03	'01 to '02	'98 to '02
Crookston	2,492	2,464	2,775	2,529	2,387	-5.6%	-4.2%
Duluth	7,831	8,504	9,087	9,380	9,815	4.6%	25.3%
Morris	1,917	1,867	1,842	1,927	1,910	-0.9%	-0.4%
Twin Cities	39,595	45,361	45,481	46,597	48,677	4.5%	22.9%
TOTAL	51,835	58,196	59,185	60,433	62,789	3.9%	21.1%

UMM Headcount Enrollment Fall 1960 to 2002

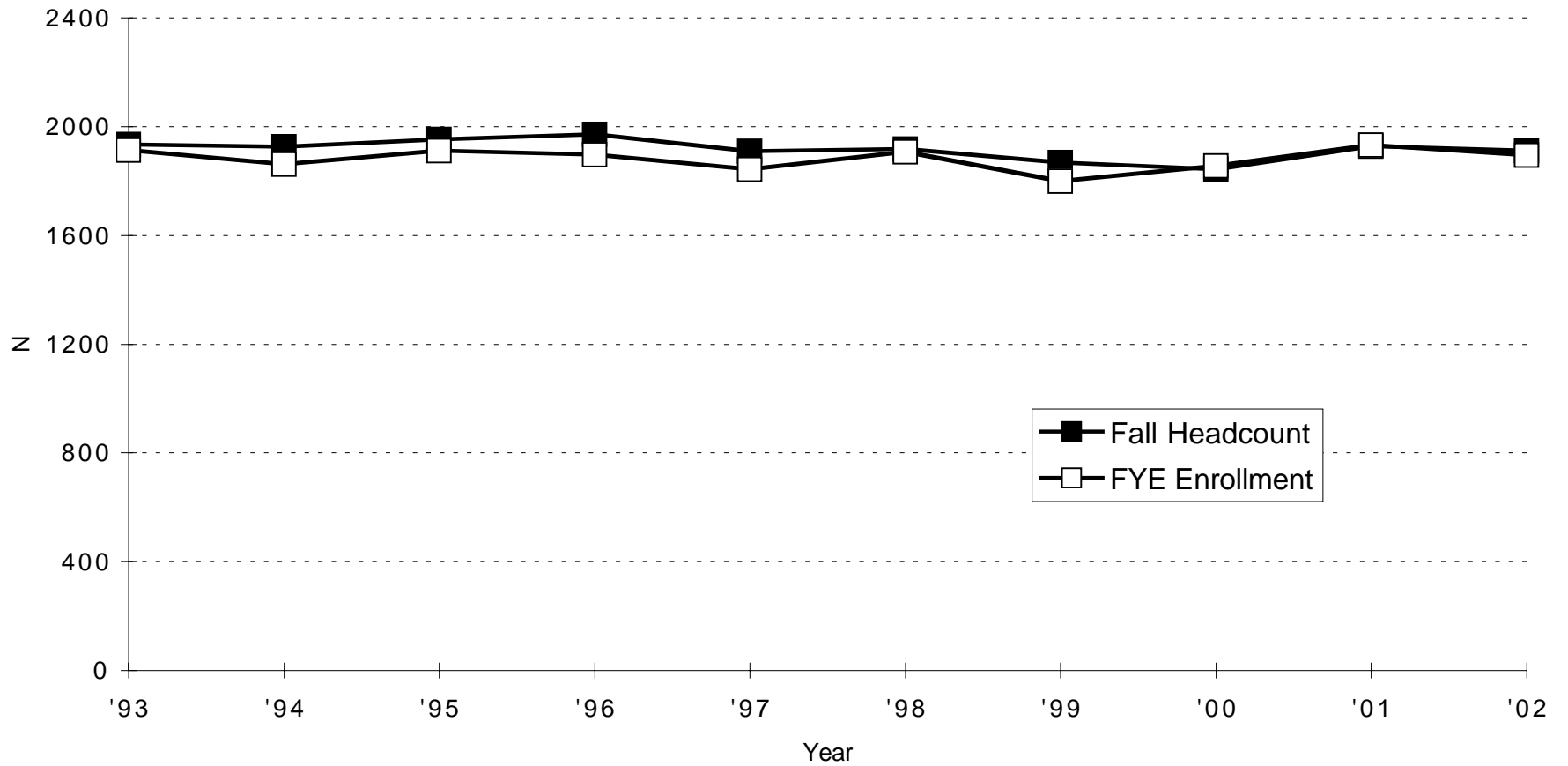


FYE Enrollment

University of Minnesota, Morris
A Five-Year Summary of Full-Year Equivalent Enrollment
in Regular Instruction for the University of Minnesota System

Campus	Academic Year					Percent of Change	
	1997-98	1998-99	1999-00	2000-01	2001-02	'00 to '01	'97 to '01
Crookston	1,273	1,341	1,334	1,639	1,480	-9.7%	16.3%
Duluth	6,658	7,298	7,320	8,547	8,931	4.5%	34.1%
Morris	1,841	1,907	1,799	1,854	1,932	4.2%	4.9%
Twin Cities	34,806	38,617	38,660	41,507	44,287	6.7%	27.2%
TOTAL	44,578	49,163	49,113	53,548	56,630	5.8%	27.0%

Consistency of FYE & Headcount Enrollments at UMM



Minority Enrollment

University of Minnesota, Morris
A Five-Year Summary of Fall Headcount of Minority Student Enrollment
for the University of Minnesota System

Campus	Academic Year					2002-03 as % of Campus Enrollment
	1998-99	1999-00*	2000-01	2001-02	2002-03	
ALL MINORITY STUDENTS						
Crookston	102	109	112	103	88	3.7%
Duluth	422	412	408	467	523	5.3%
Morris	303	292	285	296	272	14.2%
Twin Cities	5,150	5,799	5,790	5,945	6311	13.0%
TOTAL	5,977	6,612	6,595	6,811	7194	11.5%

*There are 3,370 students across the entire University for whom ethnicity information was not available due to PeopleSoft conversion. Thirteen of those students in the "Not Available" category were Morris students.

University of Minnesota, Morris
 Official Enrollment Statistics
 and Projections for 2003 - 2006

**Enrollment
 Projections**

Year	New Freshmen	New Advanced	New Non-Degree	All New	Continuing	Not Available	Total Headcount	Total FYE
Actual Enrollment								
1993-94	596	43	1	640	1293		1933	1913
1994-95	549	46	4	599	1325		1924	1861
1995-96	534	73	5	612	1340		1952	1910
1996-97	550	67	5	622	1348		1970	1896
1997-98	495	78	2	575	1333		1908	1841
1998-99	549	100	2	651	1266		1917	1865
1999-2000**	457	78	0	535	1264	68	1867	1799
2000-01	474	94	63	631	1209	2	1842	1854
2001-02	480	82	85	647	1279	1	1927	1932
2002-03	477	67	83	627	1281	2	1910	1894 *
Projected Enrollment								
2003-04	485	85	80	650	1274		1945	1930
2004-05	490	90	80	660	1288		1968	1952
2005-06	495	90	80	665	1297		1982	1966

All New--the sum of new high school students, new advanced standing, and new specials.

Continuing--includes UMM students registered during the previous spring term, intercampus transfers, and readmitted former UMM students.

*FYE for 2002-03 is estimated.

**Before 1999-00, New Freshmen totals included PSEO students. For 1999-00, PSEO students are shown in a separate "Not Available" category, counted in the total enrollment, but not in new or continuing totals. For 2000-01 and beyond, PSEO students are counted in "New Non-Degree" counts and the projected enrollment figures reflect that fact.

University of Minnesota, Morris
Out-of-State and Foreign Student Enrollments*

Out-of-State Students

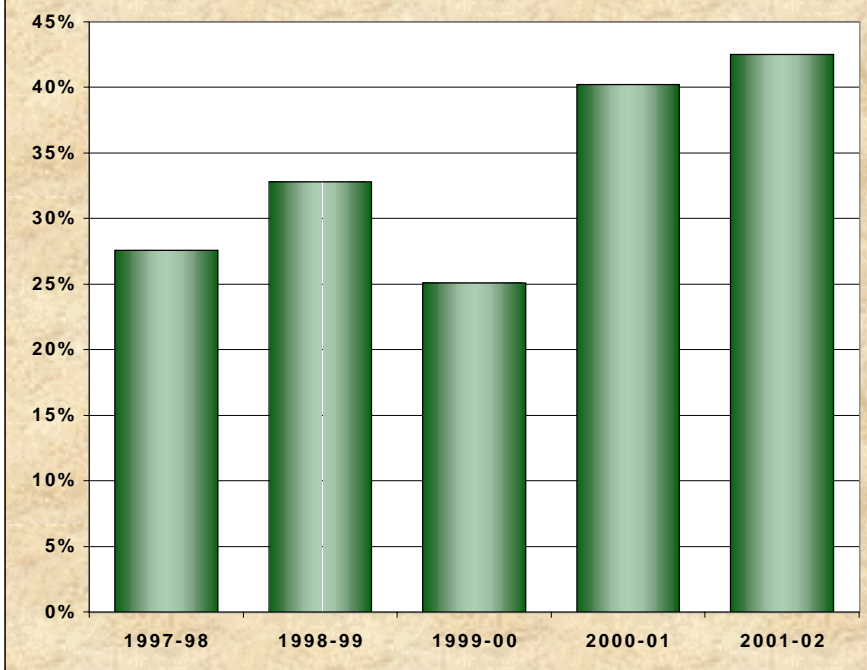
Home State	Fall 1998		Fall 1999		Fall 2000		Fall 2001		Fall 2002	
	No.	%-age	No.	%-age	No.	%-age	No.	%-age	No.	%-age
North Dakota	30	1.6%	38	2.0%	38	2.1%	44	2.3%	33	1.7%
South Dakota	115	6.0%	104	5.6%	81	4.4%	84	4.4%	93	4.9%
Wisconsin	37	1.9%	38	2.0%	41	2.2%	37	1.9%	36	1.9%
Illinois	58	3.0%	59	3.2%	61	3.3%	50	2.6%	34	1.8%
Other States (Not MN)	<u>95</u>	5.0%	<u>96</u>	5.1%	<u>91</u>	4.9%	<u>99</u>	5.1%	<u>93</u>	4.9%
Total Out-of-State	335	17.5%	335	17.9%	312	16.9%	314	16.3%	289	15.1%
Foreign	10	0.5%	13	0.7%	11	0.6%	23	1.2%	25	1.3%
Not reported	15	0.8%	24	1.3%	15	0.8%	66	3.4%	77	4.0%
Total UMM Headcount	1917		1867		1842		1927		1910	

*Data based on location of high schools from which students graduated. For this reason, the numbers in any given year do not correspond to the official resident/non-resident and international student registration statistics.

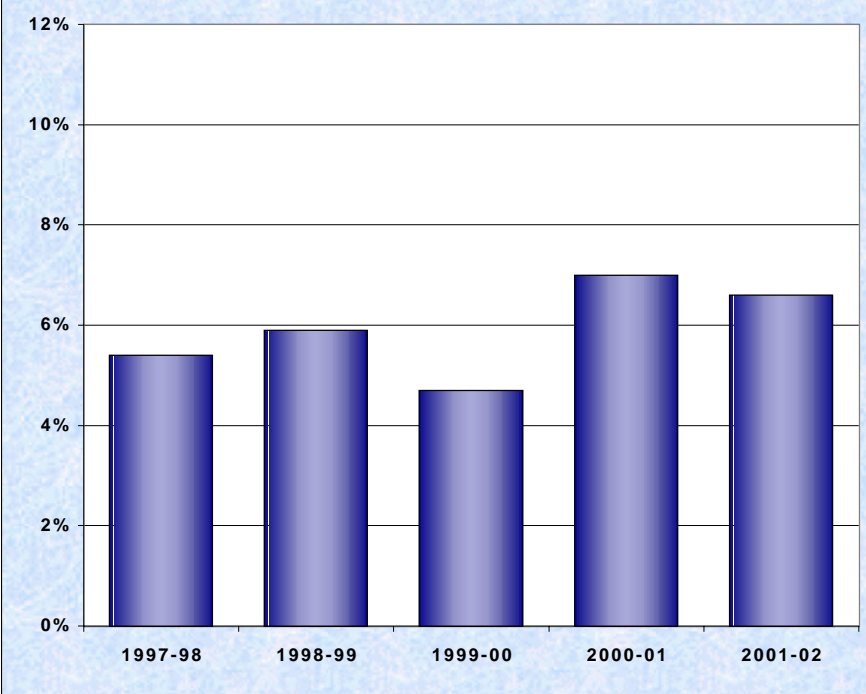
University of Minnesota, Morris
Student Study Abroad Enrollments

	1997-98	1998-99	1999-00	2000-01	2001-02
Destination/Region					
Europe	83	98	75	117	103
Latin America/Caribbean	4	8	1	19	18
Asia, Pacific, Africa	26	19	29	15	19
Australia, New Zealand, Canada	42	65	48	49	83
Multiple Regions	<u>0</u>	<u>1</u>	<u>12</u>	<u>9</u>	<u>1</u>
Total	155	191	165	209	224
Duration					
Academic or Calendar Year	5	6	2	2	6
Quarter or Semester (10-15 wks)	79	118	93	102	96
Summer (4-10 weeks)	28	30	28	26	80
Short-term (3 weeks)	43	37	42	79	42
Unknown	<u>0</u>	<u>0</u>	<u>0</u>	<u>0</u>	<u>0</u>
Total	155	191	165	209	224
Academic Level					
Freshman	0	3	8	6	7
Sophomore	16	12	18	16	21
Junior	21	33	32	37	40
Senior	112	134	107	150	144
Other	<u>6</u>	<u>9</u>	<u>0</u>	<u>0</u>	<u>12</u>
Total	155	191	165	209	224
Gender					
Female	117	143	125	168	166
Male	38	48	40	41	53
Unknown	<u>0</u>	<u>0</u>	<u>0</u>	<u>0</u>	<u>5</u>
Total	155	191	165	209	224
UMM Students					
Total Studying Abroad-UMM	103	113	88	129	127
As % of Total Enrollment	5.4%	5.9%	4.7%	7.0%	6.6%
As % of Degrees Granted	27.6%	32.8%	25.1%	40.2%	42.5%

**UMM Students Studying Abroad
as % of Degrees Granted**



**UMM Students Studying Abroad
as % of Total Enrollment**



University of Minnesota, Morris
Cohort Retention/Graduation Rates for UMM Freshmen

Student Retention

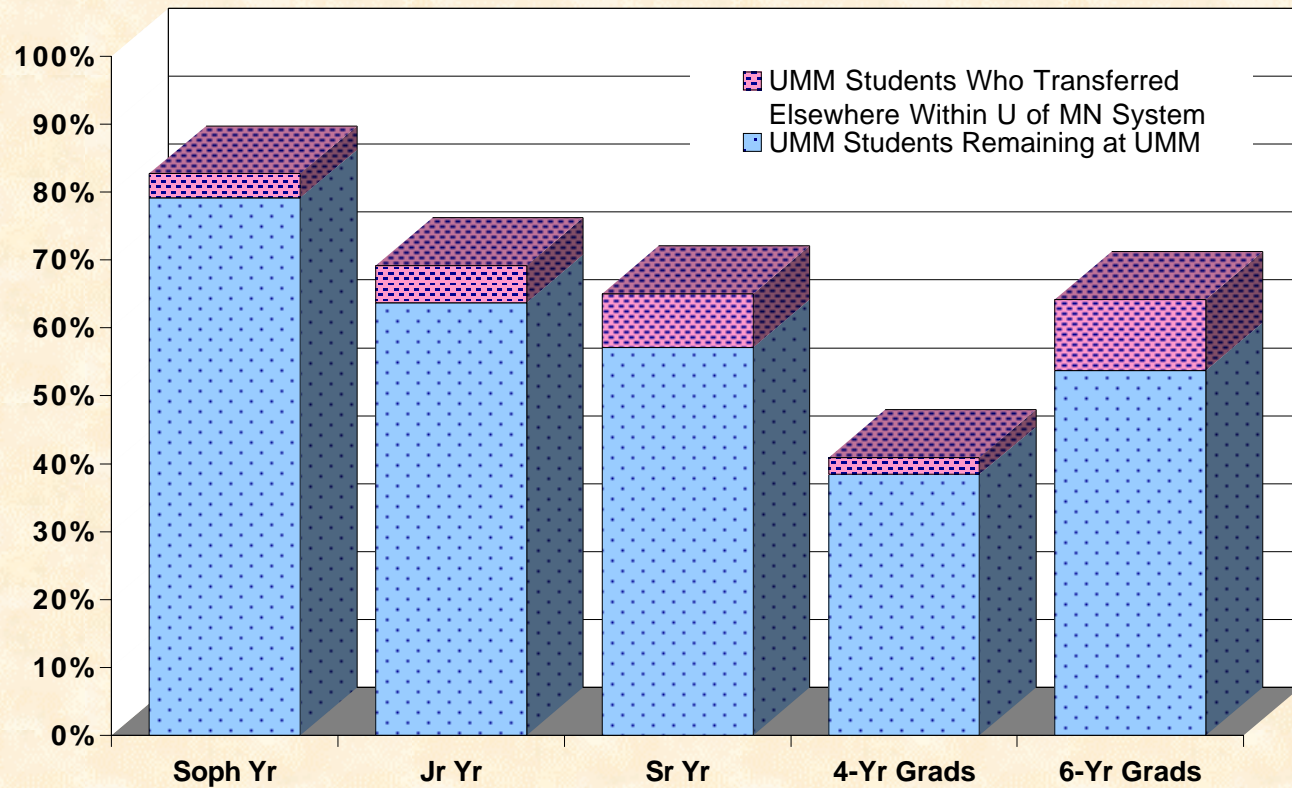
Entered		Returned for Subsequent Year			Graduated			
		Soph Year	Jr Year	Sr Year	In 4 Yrs	In 5 Yrs	In 6 Yrs	To Date
Fall 1991	UMM Only	82.8%	57.6%	54.9%	36.2%	47.1%	49.1%	49.9%
	UMM in All-UM	86.7%	76.5%	72.1%	41.0%	59.2%	64.6%	66.9%
Fall 1992	UMM Only	79.1%	57.9%	54.4%	39.0%	47.5%	50.3%	51.1%
	UMM in All-UM	83.8%	72.9%	69.8%	44.0%	56.9%	63.0%	64.5%
Fall 1993	UMM Only	81.5%	60.8%	54.7%	40.2%	51.1%	51.9%	52.9%
	UMM in All-UM	86.4%	73.9%	70.1%	43.5%	60.8%	64.0%	65.4%
Fall 1994	UMM Only	79.8%	62.5%	59.5%	42.0%	53.5%	55.9%	56.5%
	UMM in All-UM	84.7%	73.4%	72.5%	46.1%	62.5%	68.0%	68.7%
Fall 1995	UMM Only	75.1%	58.1%	53.9%	40.2%	48.5%	49.7%	50.3%
	UMM in All-UM	81.1%	71.0%	68.6%	45.3%	59.0%	61.4%	63.2%
Fall 1996	UMM Only	82.6%	65.9%	61.7%	42.7%	54.6%	55.6%	
	UMM in All-UM	86.0%	74.9%	73.0%	45.4%	61.7%	63.2%	
Fall 1997	UMM Only	78.5%	61.8%	57.7%	34.7%	47.1%		
	UMM in All-UM	83.1%	71.6%	67.7%	37.7%	55.1%		
Fall 1998	UMM Only	78.6%	60.2%	54.2%	37.7%			
	UMM in All-UM	81.6%	66.7%	61.3%	39.5%			
Fall 1999	UMM Only	76.2%	64.7%	59.4%				
	UMM in All-UM	80.4%	69.3%	66.0%				
Fall 2000	UMM Only	82.4%	66.3%					
	UMM in All-UM	85.0%	71.7%					
Fall 2001	UMM Only	78.9%						
	UMM in All-UM	82.7%						
3-Year	UMM Only	79.2%	63.7%	57.1%	38.4%	50.1%	53.7%	53.2%
Average	UMM in All-UM	82.7%	69.2%	65.0%	40.9%	58.6%	64.2%	65.8%

Note: Beginning Fall 2000, retention statistics are based on revised cohort definitions.

Rates are shown first for freshmen who entered UMM and remained on the Morris campus, and second, for freshmen who entered UMM and remained or graduated from any campus within the University of Minnesota system.

Cohort retention shows the percentage of the entering freshmen returning for their sophomore year and so on for each subsequent year. Includes students retained or who graduated in less than 4 years. Data from the University of Minnesota Student Retention Report.

**Cohort Retention & Graduation Rates
for UMM Students Remaining at UMM
and Those Transferring Elsewhere
Within the University System***



* 3-Year Average

University of Minnesota, Morris
 Postbaccalaureate Educational Experience of UMM Graduates
 By Year of Graduation

Type of Training	1964-73*	1974-83*	1984-93*	1994-98*	1999-01**
Vocational/Technical School	38.6%	30.5%	21.9%	10.3%	6.0%
Employer Training Program	71.2%	65.9%	56.7%	41.2%	38.2%
Undergrad College Classes	64.8%	53.9%	33.9%	23.3%	15.7%
Graduate/Professional Degree Program	52.5%	55.1%	45.5%	36.9%	32.7%

* Data from 3,873 respondents to a 1999 follow-up survey of all UMM graduates from 1964 through 1998.

** Data from 585 respondents to follow-up surveys mailed 9-12 months after graduation.

University of Minnesota, Morris
Occupational Level of UMM Graduates
By Year of Graduation

Occupational Level	1964-73*	1974-83*	1984-93*	1994-98*	1999-01**
Professional/Technical	53.3%	57.1%	59.3%	59.5%	59.5%
Managerial	30.2%	27.1%	26.5%	21.5%	18.3%
Farm Owners & Managers	1.3%	1.2%	0.2%	0.3%	0.2%
Marketing and Sales	7.9%	7.4%	5.6%	8.3%	9.8%
Administrative Support	3.9%	3.2%	5.0%	5.8%	7.0%
Service Workers	1.5%	0.6%	1.7%	3.0%	3.3%
Precision Production/ Operatives	1.4%	3.3%	1.4%	1.3%	1.4%
Laborers	0.3%	0.1%	0.2%	0.3%	0.4%

* Data from 3,873 respondents to a 1999 follow-up survey of all UMM graduates from 1964 through 1998.

** Data from 585 respondents to follow-up surveys mailed 9-12 months after graduation.

ACADEMIC PROGRAM INFORMATION

Five-year summaries of the declared majors for the entire student body as well as degrees granted are provided as an indication of student interest and demand for programs offered at UMM. Pie diagrams show the change in the pattern of declared majors of the student body between the spring of '98 and the spring of '02. The table showing student:faculty ratios also contains a column "FYE Students" which represents a student demand for the courses of that discipline. This statistic is determined by dividing the annual total student credit hours taught in a given discipline by the normal full-time credit load for a single student.

The student:faculty ratio table also indicates "FTE" faculty which is based upon the actual teaching loads of both the full- and part-time faculty in that discipline for the given year. The current student:faculty ratios are shown as well as the five-year average. Two related charts show the distribution of course enrollments expressed as "FYE" students among the four Divisions and the distribution of instructional resources expressed as "FTE" faculty among those same Divisions. The charts suggest a decade of substantial stability both in student demand and the allocation of faculty resources. An additional table is provided showing the annual total of student credit hours taught, total enrollment in all courses offered, number of upper and lower division classes (including multiple sections), and FTE faculty for each discipline. The data represent some of the more conventional indices of discipline teaching load.

One of the tables shows the comparison between faculty line items and full-time equivalent (FTE) teaching positions. The term "line" represents a permanent budgeted faculty position; with few exceptions they are tenure-track positions. During the past few years, UMM has shifted some civil service and faculty positions into the Academic Professional and Administrative (P&A) staff category. The FTE column prorates the equivalent of full-time teaching positions committed to instruction in that discipline. Temporary and part-time positions are added in proportion to the number of credits taught. Teaching faculty with administrative responsibilities have a portion of their position deducted in like fashion (Division Chairs and physical education staff with coaching responsibilities are examples).

The table showing faculty salaries includes nine- and ten-month faculty with full-time teaching responsibilities. Division Chairs and faculty members with primarily administrative responsibilities have been excluded. Ten-month salaries have been converted to show their nine-month equivalent. Finally, the percentage of the total faculty who are tenured, who are women, or who are minority members is shown. The final chart shows the change in the percentages of tenured faculty, women faculty, and minority faculty over the years.

Elaborate academic profile and planning data covering nearly every facet of faculty characteristics, salaries, student demand, work load, cost and productivity statistics are maintained. Most have been collected annually in a consistent fashion for more than a decade. In addition, University-wide information is available on many of these same characteristics provided by the central administration. The UMM Institutional Research Office is the best single source for this data.

University of Minnesota, Morris
Declared Majors of the Student Body
as of Spring Term

Major

Declared Major	1998	1999	2000	2001	2002
EDUCATION DIVISION					
Elementary Education	165	176	172	174	175
Secondary Education*	85	79	34	74	69
Subtotal:	250	255	206	248	244
HUMANITIES DIVISION					
Art History	11	12	13	24	14
Art Studio	37	42	46	69	59
English	175	197	168	172	133
French	19	18	16	19	13
German	17	13	14	18	14
Music	51	43	53	81	68
Philosophy	18	14	13	26	22
Spanish	59	37	38	54	61
Speech Communication	70	66	63	80	50
Theatre Arts	29	37	31	39	36
Subtotal:	486	479	455	582	470
SCIENCE & MATH DIVISION					
Biology	243	208	211	228	221
Chemistry	93	83	77	120	85
Computer Science	115	138	136	133	122
Geology	32	31	31	31	26
Mathematics	72	72	73	114	77
Physics	25	20	21	37	23
Statistics	NA	NA	NA	NA	11
Subtotal:	580	552	549	663	565
SOCIAL SCIENCE DIVISION					
Anthropology	NA	NA	NA	NA	8
Economics	75	67	68	74	52
History	53	52	65	96	65
Lib. Arts Human Serv.	83	84	80	87	102
Management**	163	156	167	158	142

(Continued next page)

University of Minnesota, Morris
Declared Majors of the Student Body
as of Spring Quarter

Declared Major	1998	1999	2000	2001	2002
SOCIAL SCIENCE DIVISION (Cont.)					
Political Science	85	86	90	112	92
Psychology	162	149	139	165	140
Social Science	51	55	69	77	83
Sociology	43	38	34	44	38
Women's Studies	NA	NA	NA	17	18
Subtotal:	<u>715</u>	<u>687</u>	<u>712</u>	<u>830</u>	<u>740</u>
INTERDISCIPLINARY					
European Studies	5	2	0	2	3
Latin Amer. Studies	13	9	7	8	5
Misc./Area/Option	43	33	24	65	38
Subtotal:	<u>61</u>	<u>44</u>	<u>31</u>	<u>75</u>	<u>46</u>
PREPROFESSIONAL PROGRAMS					
Pre-Dentistry***	7	8	11	7	0
Pre-Engineering	44	39	28	25	28
Pre-Law***	15	12	20	13	0
Pre-Medicine***	68	58	69	72	61
Pre-Pharmacy	11	11	7	10	16
Pre-Physical Therapy	16	18	15	10	13
Pre-Vet Medicine***	17	16	17	11	11
Other Pre-Professional	5	1	0	0	0
Subtotal:	<u>183</u>	<u>163</u>	<u>167</u>	<u>148</u>	<u>129</u>
TOTAL DECLARED MAJORS					
TOTAL DECLARED MAJORS	2,190	2,101	2,086	2,472	2,125
UNDECIDED	92	96	67	99	124
HIGH SCHOOL (PSEO)	30	40	30	41	41
NON-DEGREE STUDENTS	NA	NA	NA	12	5
OFFICIAL SPRING ENROLLMENT	1,728	1,755	1,778	1,774	1,853

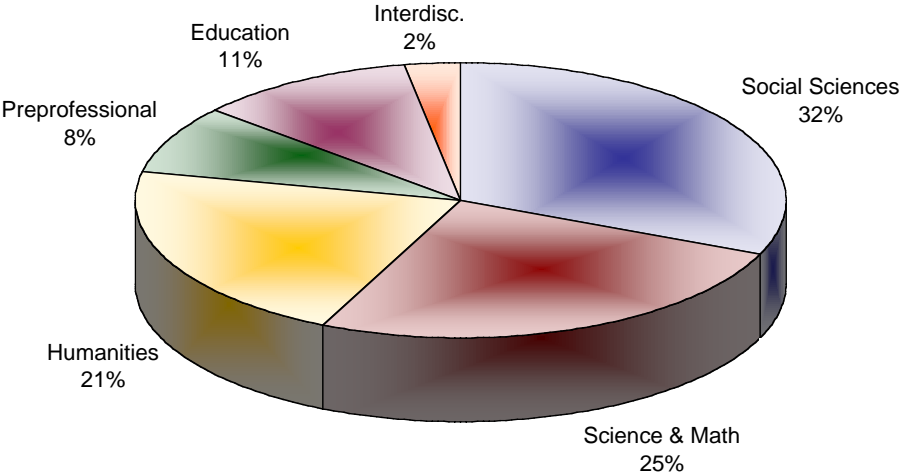
*Secondary education is a licensure program, not a major. Note: Numbers in the SeEd program declined with the conversion to semesters because SeEd now involves only seniors, not juniors and seniors.

**Mgmt includes students admitted to the Mgmt program and any other students who declare Mgmt as their major.

***Four-year B.A. programs.

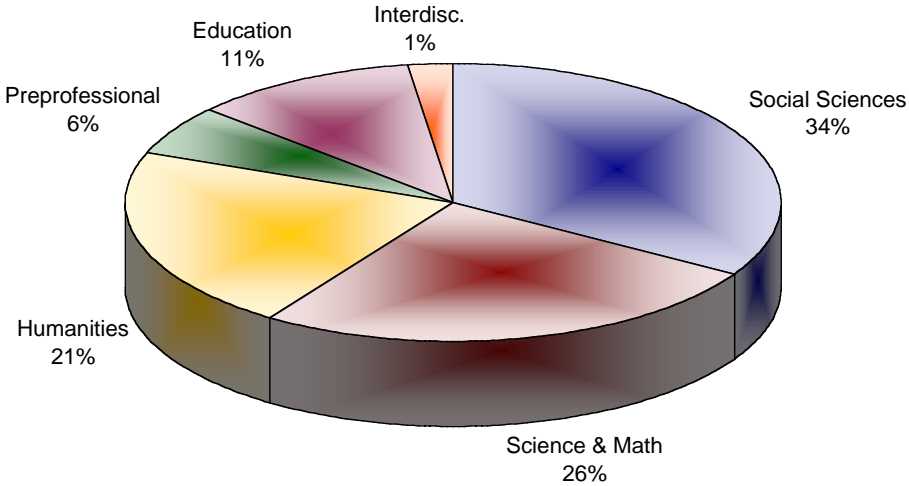
--Information is taken from individual student spring quarter registrations, Major-Advisor Reports, UM Student Support Services.

**Change in Declared Majors
of the UMM Student Body
Between Spring '98 and Spring '02**



1998 UMM Declared Majors (above)

2002 UMM Declared Majors (below)



University of Minnesota, Morris
Number of B.A. Degrees
Granted by Major

B.A. Degrees

Major	1997-98	1998-99	1999-00	2000-01	2001-02	5 Yr. Average
EDUCATION DIVISION						
Elementary Education	43	33	35	28	27	33.2
Secondary Education*	37	43	34	39	24	35.4
Subtotal	<u>80</u>	<u>76</u>	<u>69</u>	<u>67</u>	<u>51</u>	68.6
HUMANITIES DIVISION						
Art History	8	5	4	3	5	5.0
Art Studio	8	6	6	8	14	8.4
English	42	46	37	47	23	39.0
French	4	4	7	4	8	5.4
German	5	5	4	5	2	4.2
Music	10	11	9	4	10	8.8
Philosophy	5	5	2	4	4	4.0
Spanish	12	11	7	6	6	8.4
Speech Communication	19	11	17	20	9	15.2
Speech/Theatre	1	0	0	0	0	0.2
<u>Theatre Arts</u>	<u>8</u>	<u>5</u>	<u>2</u>	<u>6</u>	<u>4</u>	<u>5.0</u>
Subtotal	<u>122</u>	<u>109</u>	<u>95</u>	<u>107</u>	<u>85</u>	103.6
SCIENCE & MATH DIVISION						
Biology	50	37	42	31	30	38.0
Chemistry	17	12	18	3	11	12.2
Computer Science	13	13	16	19	25	17.2
Geology	8	8	9	11	6	8.4
Mathematics	13	16	7	14	13	12.6
Physics	0	2	4	3	4	2.6
<u>Statistics</u>	<u>NA</u>	<u>NA</u>	<u>NA</u>	<u>NA</u>	<u>4</u>	<u>4.0</u>
Subtotal	<u>101</u>	<u>88</u>	<u>96</u>	<u>81</u>	<u>93</u>	91.8

(Continued next page)

University of Minnesota, Morris
Number of B.A. Degrees
Granted by Major

Major	1997-98	1998-99	1999-00	2000-01	2001-02	5 Yr. Average
SOCIAL SCIENCE DIVISION						
Anthropology	NA	NA	NA	NA	2	2.0
Economics	32	20	17	14	14	19.4
History	10	7	19	12	9	11.4
Lib. Arts Hum. Serv.	31	30	32	25	26	28.8
Management	44	37	41	27	31	36.0
Political Science	19	21	20	25	16	20.2
Psychology	34	31	27	25	30	29.4
Social Science	7	9	14	18	12	12.0
Sociology	17	16	6	16	9	12.8
<u>Women's Studies</u>	NA	NA	NA	1	4	2.5
Subtotal	<u>194</u>	<u>171</u>	<u>176</u>	<u>163</u>	<u>153</u>	<u>171.4</u>
INTERDISCIPLINARY						
European Studies	1	2	0	0	1	0.8
Latin Amer. Studies	4	5	3	4	1	3.4
<u>Area of Concentration</u>	<u>7</u>	<u>20</u>	<u>16</u>	<u>19</u>	<u>9</u>	<u>14.2</u>
Subtotal	<u>12</u>	<u>27</u>	<u>19</u>	<u>23</u>	<u>11</u>	<u>18.4</u>
TOTAL GRADUATES	373	345	351	321	299	337.8
TOTAL MAJORS OF GRADS	472	428	421	402	369	430.8

Note: Graduates with multiple majors counted more than once.
*Licensure program-SecEd not a major.

University of Minnesota, Morris
2001-2002 Student/Faculty Ratios by Discipline

S/F Ratios

Discipline	FYE	FTE	Student/Faculty Ratio	
	Students	Faculty	Current	5 Yr. Average
EDUCATION DIVISION				
Education	3.5	0.4	8.8	10.1
Elementary Education	52.0	3.2	16.5	17.5
Secondary Education	30.4	3.3	9.3	10.4
Wellness & Sport Sci.	52.1	6.1	8.6	9.8
	138.0	12.9	10.7	11.8
HUMANITIES DIVISION				
Art History	36.6	2.0	18.3	16.5
Art Studio	38.1	3.8	10.1	8.5
English	131.3	10.3	12.8	15.1
French	15.6	2.6	6.0	9.1
German	18.5	2.8	6.6	8.3
Humanities	9.1	0.8	11.3	16.8
Music	74.0	8.1	9.1	8.9
Philosophy	39.2	2.9	13.5	12.7
Russian	0.0	0.0	NA	10.6
Spanish	76.1	4.8	15.9	14.3
Speech Communication	54.4	4.0	13.6	13.9
Theatre Arts	31.9	3.0	10.6	9.8
	524.7	45.1	11.6	12.2
SCIENCE & MATH DIVISION				
Biology	99.0	6.8	14.6	14.9
Chemistry	85.3	6.0	14.2	13.7
Computer Science	54.2	4.3	12.6	16.4
Geology	74.5	3.8	19.6	18.6
Mathematics	111.6	8.0	14.0	16.3
Natural Science	4.7	0.2	23.3	11.2
Physics	42.6	4.1	10.3	11.0
Statistics	69.1	2.8	24.7	24.7
	540.8	36.0	15.0	15.3

University of Minnesota, Morris
2001-2002 Student/Faculty Ratios by Discipline

S/F Ratios

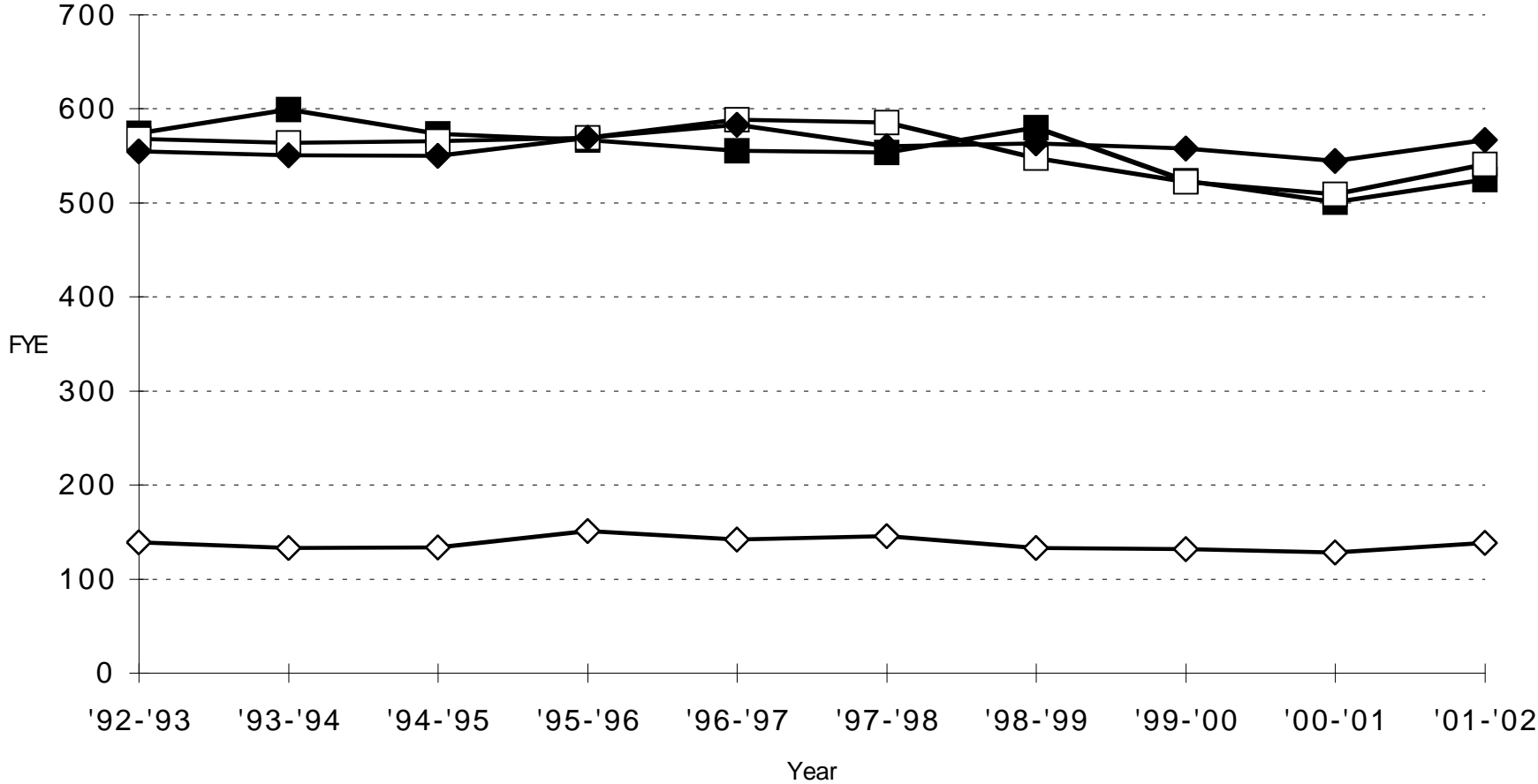
Discipline	FYE	FTE	Student/Faculty Ratio	
	Students	Faculty	Current	5 Yr. Average
SOCIAL SCIENCE DIVISION				
Anthropology	42.0	2.8	15.0	21.2
Economics	63.5	3.8	16.6	18.4
Geography	4.8	0.2	24.0	30.4
History	129.0	5.8	22.2	19.5
Management	45.2	3.0	15.3	15.8
Political Science	75.1	4.9	15.2	17.4
Psychology	147.5	5.8	25.4	22.8
Sociology	50.5	2.7	18.7	17.2
Women's Studies	9.0	0.5	18.1	17.2
	566.7	29.5	19.2	19.2
INTERDISCIPLINARY STUDIES				
	152.7	5.5	27.8	25.9
GRAND TOTALS				
	1922.9	129.0	14.9	15.1

--FYE Student = SCH/30; FTE Faculty based on actual teaching load of full and part-time faculty.

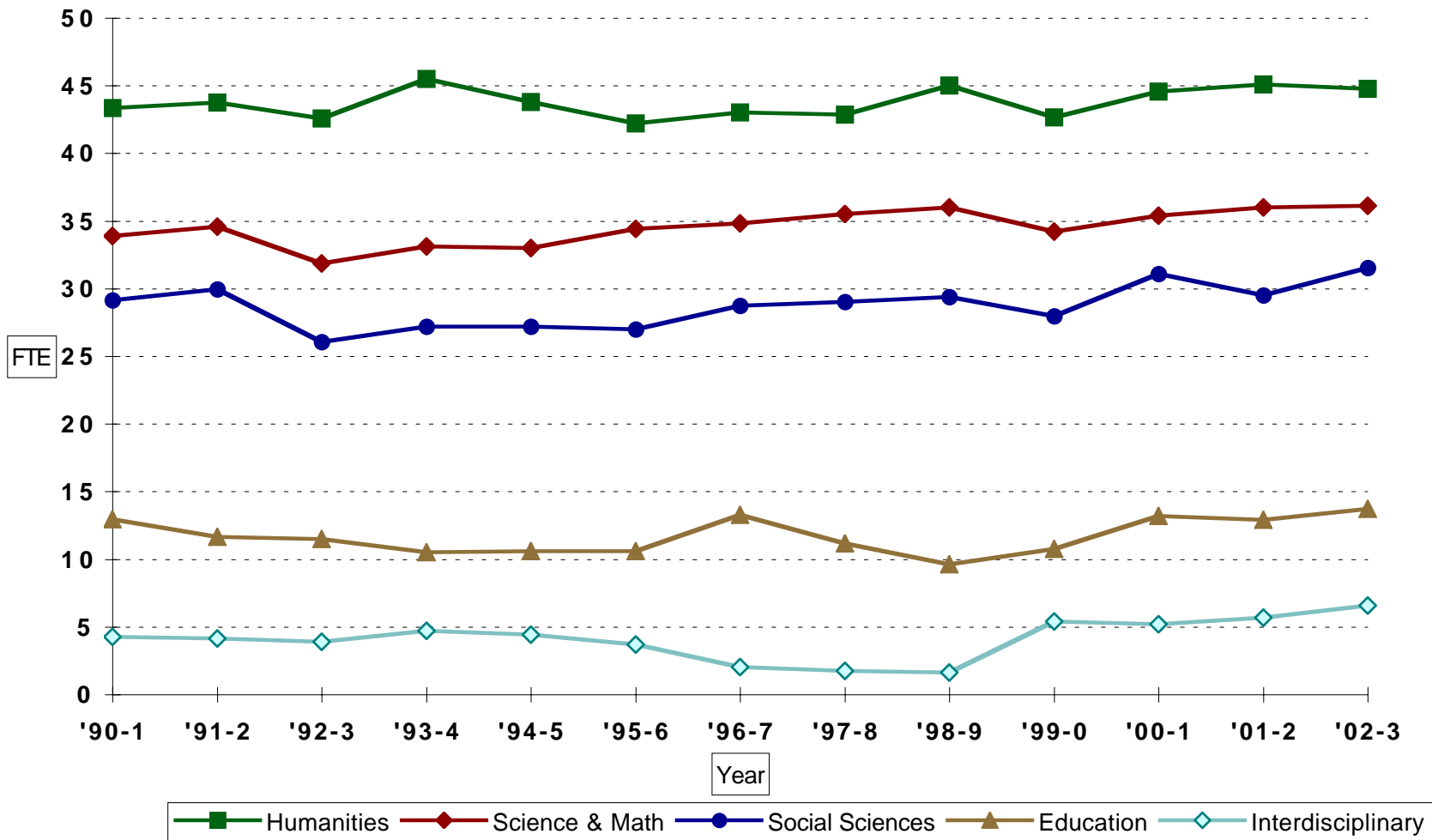
--S/F Ratio = FYE Students/FTE Faculty.

FYE Student Course Enrollment by Division

■ Hum □ S&M ◆ SSci ◇ Educ



UMM FTE Faculty by Division



University of Minnesota, Morris
2001-2002 Statistics on
Enrollment, Classes, and Faculty

Discipline	SCH	Enrollment	No. of Classes		Aver. Class Size			FTE Faculty	ICH/FTE
			LD	UD	LD	UD	All		
EDUCATION DIVISION									
Education	105	100	0	0	NA	NA	NA	0.4	20.0
Elementary Education	1,561	522	0	18	NA	21.1	21.1	3.2	25.1
Secondary Education	911	240	0	17	NA	11.1	11.1	3.3	27.6
Wellness & Sport Sci.	1,564	943	28	2	21.6	8.0	20.7	6.1	14.8
	4,141	1,805	28	37	21.6	15.8	18.3	12.9	20.7
HUMANITIES DIVISION									
Art History	1,097	277	4	5	50.8	13.4	30.0	2.0	18.0
Art Studio	1,143	483	22	9	14.1	6.8	12.0	3.8	23.8
English	3,939	983	41	18	16.0	15.9	16.0	10.3	23.3
French	468	117	6	4	15.5	5.8	11.6	2.6	15.4
German	556	140	6	7	19.3	3.4	10.8	2.8	18.6
Humanities	272	68	4	0	15.0	NA	15.0	0.8	20.0
Music	2,219	1,637	6	6	28.0	7.8	17.9	8.1	37.8
Philosophy	1,176	298	10	5	24.3	9.4	19.3	2.9	21.0
Russian	0	0	0	0	NA	NA	NA	0.0	NA
Spanish	2,282	564	15	10	28.4	13.6	22.5	4.8	20.4
Speech Communication	1,632	391	8	11	27.3	15.6	20.5	4.0	19.0
Theatre Arts	958	266	8	9	21.8	6.1	13.5	3.0	23.7
	15,742	5,224	130	84	20.5	10.9	16.8	45.1	24.1
SCIENCE & MATH DIVISION									
Biology	2,970	834	23	21	17.2	15.4	16.4	6.8	21.7
Chemistry	2,558	811	17	11	29.4	10.9	22.1	6.0	19.5
Computer Science	1,625	519	12	15	22.7	13.9	17.8	4.3	20.5
Geology	2,235	592	14	8	37.5	4.6	25.5	3.8	25.4
Mathematics	3,347	779	25	11	26.4	11.9	22.0	8.0	19.4
Natural Science	140	35	1	0	35.0	NA	35.0	0.2	20.0
Physics	1,277	255	14	6	15.9	4.5	12.5	4.1	16.5
Statistics	2,072	520	11	4	41.7	12.8	34.0	2.8	24.6
	16,224	4,345	117	76	26.2	11.8	20.6	36.0	20.7

(Continued next page)

University of Minnesota, Morris
2001-2002 Statistics on
Enrollment, Classes, and Faculty

Discipline	SCH	Enrollment	No. of Classes		Aver. Class Size			FTE Faculty	ICH/FTE
			LD	UD	LD	UD	All		
SOCIAL SCIENCES DIVISION									
Anthropology	1,261	292	8	6	28.8	8.5	20.1	2.8	20.0
Economics	1,906	550	7	17	36.9	15.3	21.6	3.8	19.8
Geography	144	36	1	0	36.0	NA	36.0	0.2	20.0
History	3,869	971	11	21	53.3	16.1	28.9	5.8	23.3
Management	1,356	434	4	15	32.5	16.1	19.6	3.0	20.3
Political Science	2,253	558	5	20	56.0	12.1	20.8	4.9	21.9
Psychology	4,424	1,216	8	25	88.0	20.4	36.8	5.8	20.3
Sociology	1,516	377	6	12	37.5	11.3	20.1	2.7	22.6
Women's Studies	271	71	2	0	31.5	NA	31.5	0.5	20.0
	<u>17,000</u>	<u>4,505</u>	<u>52</u>	<u>116</u>	<u>48.3</u>	<u>15.3</u>	<u>25.5</u>	<u>29.5</u>	<u>21.3</u>
INTERDISCIPLINARY STUDIES	4,581	1,266	64	15	13.9	14.7	14.1	5.5	44.6
GRAND TOTALS	57,687	17,145	391	328	24.9	13.4	19.7	129.0	23.0

Notes: SCH shows official stats. SCH is the end-of-term class enrollment multiplied by the number of credits; enrollment is the end-of-term enrollment in all courses offered by the discipline; no. of classes incl. multiple sections (excl. noncredit courses, music lessons, WSS skills courses); average class size is the average enrollment in the discipline's upper and lower division classes, including multiple sections, but excluding one-credit, noncredit, and directed studies offerings; instructor credit hours (ICH)/FTE is the number of credits taught by faculty in the discipline divided by the number of FTE faculty (e.g., 1 faculty member teaches 5 courses at 4 credits each for a total of 20 ICH).

University of Minnesota, Morris
Academic Teaching Faculty Line Item and Full-Time Equivalent Teaching Positions
and Administrative Faculty and Staff Positions 1997-2003

Faculty Positions

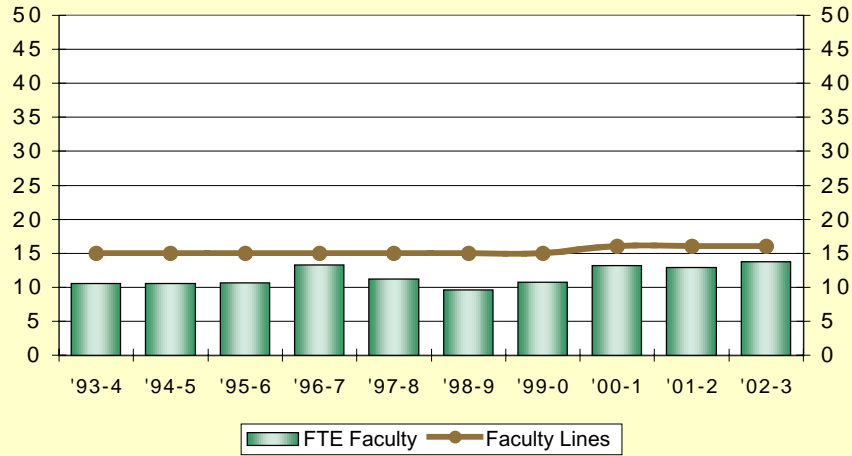
Division/Discipline	1997-98		1998-99		1999-00		2000-01		2001-02		2002-03	
	Line	FTE	Line	FTE	Line	FTE	Line	FTE	Line	FTE	Line	FTE*
EDUCATION DIVISION												
Elementary Education	3.0	2.8	3.0	2.8	3.0	3.1	3.0	3.3	3.0	3.2	4.0	3.5
Secondary Education	3.0	4.1	3.0	2.7	3.0	2.5	3.0	3.7	3.0	3.7	3.0	3.8
Wellness and Sport Sci.	<u>9.0</u>	<u>4.3</u>	<u>9.0</u>	<u>4.4</u>	<u>9.0</u>	<u>5.1</u>	<u>10.0</u>	<u>6.3</u>	<u>10.0</u>	<u>6.1</u>	<u>9.0</u>	<u>6.5</u>
	15.0	11.2	15.0	9.9	15.0	10.8	16.0	13.2	16.0	12.9	16.0	13.7
HUMANITIES DIVISION												
Art History	3.0	2.7	3.0	2.7	3.0	2.2	3.0	3.0	3.0	2.0	3.0	2.5
Art Studio	3.0	3.1	3.0	3.3	3.0	3.4	4.0	3.9	4.0	3.8	4.0	4.2
English	10.0	10.3	10.0	9.8	10.0	9.4	11.0	10.0	11.0	10.3	11.0	10.2
French	3.0	2.0	3.0	2.5	3.0	2.2	3.0	2.2	3.0	3.0	3.0	2.8
^ German/Russian	3.0	2.0	3.0	3.0	3.0	2.8	3.0	2.9	3.0	3.0	3.0	2.4
Music	6.0	8.4	6.0	8.4	6.0	7.7	6.0	8.1	6.0	8.1	6.0	7.8
Philosophy	3.0	2.7	3.0	3.0	3.0	3.0	3.0	3.0	3.0	2.9	3.0	2.7
Spanish	4.0	4.8	4.0	5.0	5.0	5.0	5.0	5.0	5.0	5.0	5.0	5.1
Speech Communication	4.0	3.8	4.0	3.8	4.0	4.0	4.0	3.5	4.0	4.0	4.0	4.0
Theatre Arts	<u>3.0</u>	<u>3.0</u>	<u>3.0</u>	<u>3.0</u>	<u>3.0</u>	<u>3.0</u>	<u>3.0</u>	<u>3.0</u>	<u>3.0</u>	<u>3.0</u>	<u>3.0</u>	<u>3.0</u>
	42.0	42.9	42.0	44.5	43.0	42.7	45.0	44.6	45.0	45.1	45.0	44.8
SCIENCE & MATH DIV.												
Biology	6.0	5.7	6.0	5.7	6.0	6.0	7.0	6.8	7.5	7.0	7.5	7.1
Chemistry	5.0	7.0	5.0	7.0	6.0	6.7	6.0	6.7	6.0	6.0	6.0	6.0
Computer Science	4.0	5.0	4.0	5.0	4.0	4.1	4.0	4.4	4.0	4.3	4.0	4.3
Geology	3.0	4.0	3.0	4.0	4.0	3.8	4.0	2.8	4.0	3.8	4.0	4.0
Mathematics	8.0	9.5	8.0	10.3	10.0	10.3	11.0	10.8	8.0	8.0	8.0	8.0
Physics	4.0	4.3	4.0	3.8	4.0	3.3	4.0	3.9	4.0	4.1	4.0	3.8
Statistics	--	--	--	--	--	--	--	--	<u>3.0</u>	<u>2.8</u>	<u>3.0</u>	<u>2.9</u>
	30.0	35.5	30.0	35.8	34.0	34.2	36.0	35.4	36.5	36.0	36.5	36.1
SOCIAL SCIENCES DIV.												
Anthropology	1.7	1.7	1.7	1.7	1.7	2.3	1.7	2.8	1.7	2.8	1.7	2.6
Economics	3.0	3.4	3.0	3.0	3.0	4.0	3.7	4.0	3.7	3.8	3.7	4.4
History	7.0	6.3	7.0	6.7	7.0	5.8	7.0	6.3	7.0	6.0	7.0	6.0
Management	3.0	3.4	3.0	3.2	3.0	3.2	2.3	3.4	2.3	3.0	2.3	2.3
Political Science	4.0	4.1	4.0	4.0	4.0	2.8	5.0	4.4	5.0	4.9	5.0	4.9
Psychology	5.0	6.8	5.0	6.5	6.0	6.3	6.0	6.0	6.0	5.8	7.0	7.5
Sociology	3.3	3.3	3.3	3.3	3.3	3.6	3.3	4.2	3.3	2.7	3.3	3.4
Women's Studies	--	--	--	--	--	<u>0.2</u>	--	<u>0.7</u>	--	<u>0.5</u>	--	<u>0.5</u>
	27.0	29.0	27.0	29.4	28.0	28.2	29.0	31.7	29.0	29.5	30.0	31.5
DIVISION TOTAL												
	114.0	118.5	114.0	119.0	120.0	115.8	126.0	124.9	126.5	123.5	127.5	126.1
ADMIN. FACULTY												
	4.0		3.0		3.0		3.0		2.0		2.0	
ACAD. PROF. & ADMN. STAFF												
	32.5		32.0		34.0		36.0		37.0		38.0	

"Line" represents a permanent budgeted faculty position; "FTE" is the prorated equivalent of full-time teaching positions committed to instruction in that discipline.

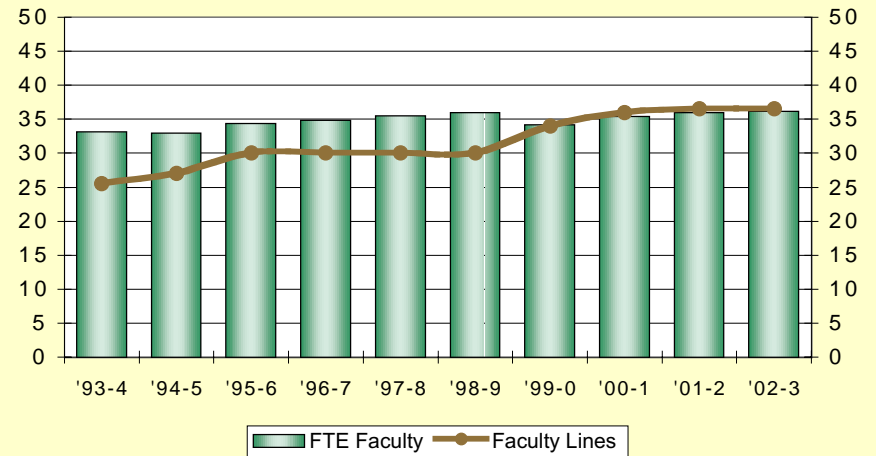
*FTE for 2002-03 does not include 6.58 interdisciplinary FTE. #Ten PE coaches are P&A employees, but counted as faculty lines.

^Russian instruction added Fall 1998.

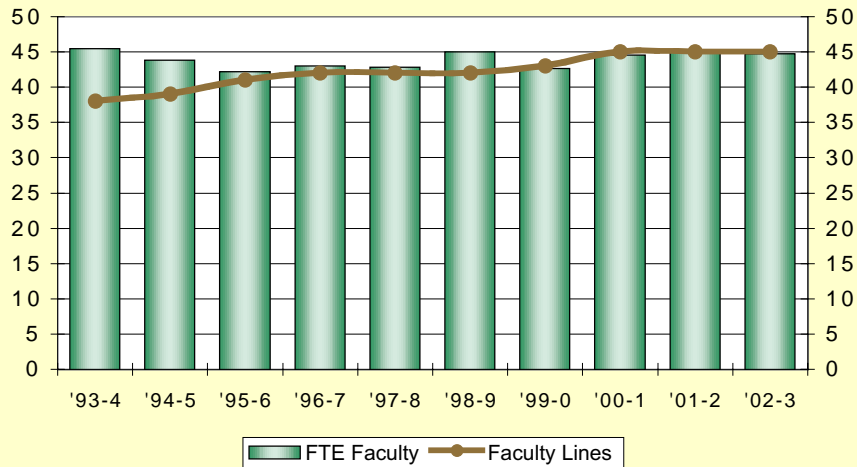
**FTE/Line Faculty Positions:
EDUCATION**



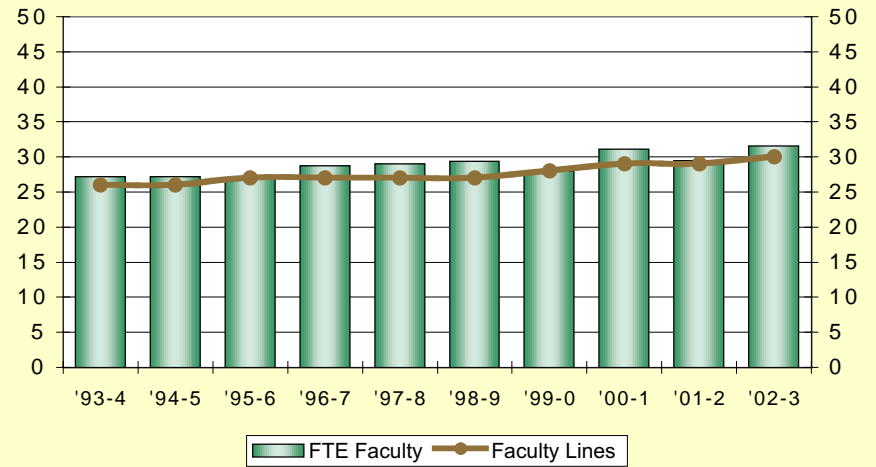
**FTE/Line Faculty Positions:
SCIENCE & MATH**



**FTE/Line Faculty Positions:
HUMANITIES**



**FTE/Line Faculty Positions:
SOCIAL SCIENCES**



University of Minnesota, Morris
Average Salary for Full-time Teaching Faculty
by Rank & Sex

Faculty Salaries

	1998-99	1999-00	2000-01	2001-02	2002-03
MEN:					
Professors	\$66,663 (22)	\$67,539 (22)	\$67,362 (19)	\$70,950 (19)	\$70,618 (21)
Associates	\$49,527 (20)	\$50,610 (19)	\$51,708 (19)	\$53,396 (21)	\$54,774 (21)
Assistants	\$37,153 (23)	\$38,092 (22)	\$38,864 (26)	\$39,624 (33)	\$41,397 (33)
Instructors	\$33,860 (5)	\$35,763 (4)	\$36,000 (5)	\$37,575 (4)	\$42,760 (5)
All Ranks	\$49,728 (70)	\$51,172 (67)	\$50,041 (69)	\$51,003 (77)	\$52,664 (80)
WOMEN:					
Professors	\$57,054 (4)	\$58,854 (4)	\$58,837 (3)	\$63,402 (5)	\$63,870 (5)
Associates	\$50,165 (13)	\$51,390 (13)	\$53,130 (14)	\$53,873 (15)	\$54,708 (18)
Assistants	\$37,933 (21)	\$38,779 (24)	\$38,634 (26)	\$39,867 (24)	\$40,099 (22)
Instructors	\$34,167 (9)	\$35,559 (6)	\$36,441 (8)	\$35,321 (7)	\$39,777 (6)
All Ranks	\$42,222 (47)	\$43,565 (47)	\$43,458 (51)	\$45,670 (51)	\$47,548 (51)
TOTAL:					
Professors	\$65,184 (26)	\$66,203 (26)	\$66,199 (22)	\$69,378 (24)	\$69,320 (26)
Associates	\$49,778 (33)	\$50,927 (32)	\$52,311 (33)	\$53,595 (36)	\$54,744 (39)
Assistants	\$37,525 (44)	\$38,451 (46)	\$38,749 (52)	\$39,726 (57)	\$40,878 (55)
Instructors	\$34,057 (14)	\$35,640 (10)	\$36,271 (13)	\$36,141 (11)	\$41,133 (11)
All Ranks	\$46,713 (117)	\$48,036 (114)	\$47,243 (120)	\$48,878 (128)	\$50,672 (131)

--Figure in parenthesis indicates the number of individuals in each category

--'9-month' and '10-month converted to 9-month' salaries only.

--Administrators' salaries are excluded before 2001-02; beginning 2001-02, only Chancellor/Vice Chancellor salaries are excluded.

University of Minnesota, Morris
The Percent of Full-time Faculty Who Are
Female, Minority, Tenured, or Temporary

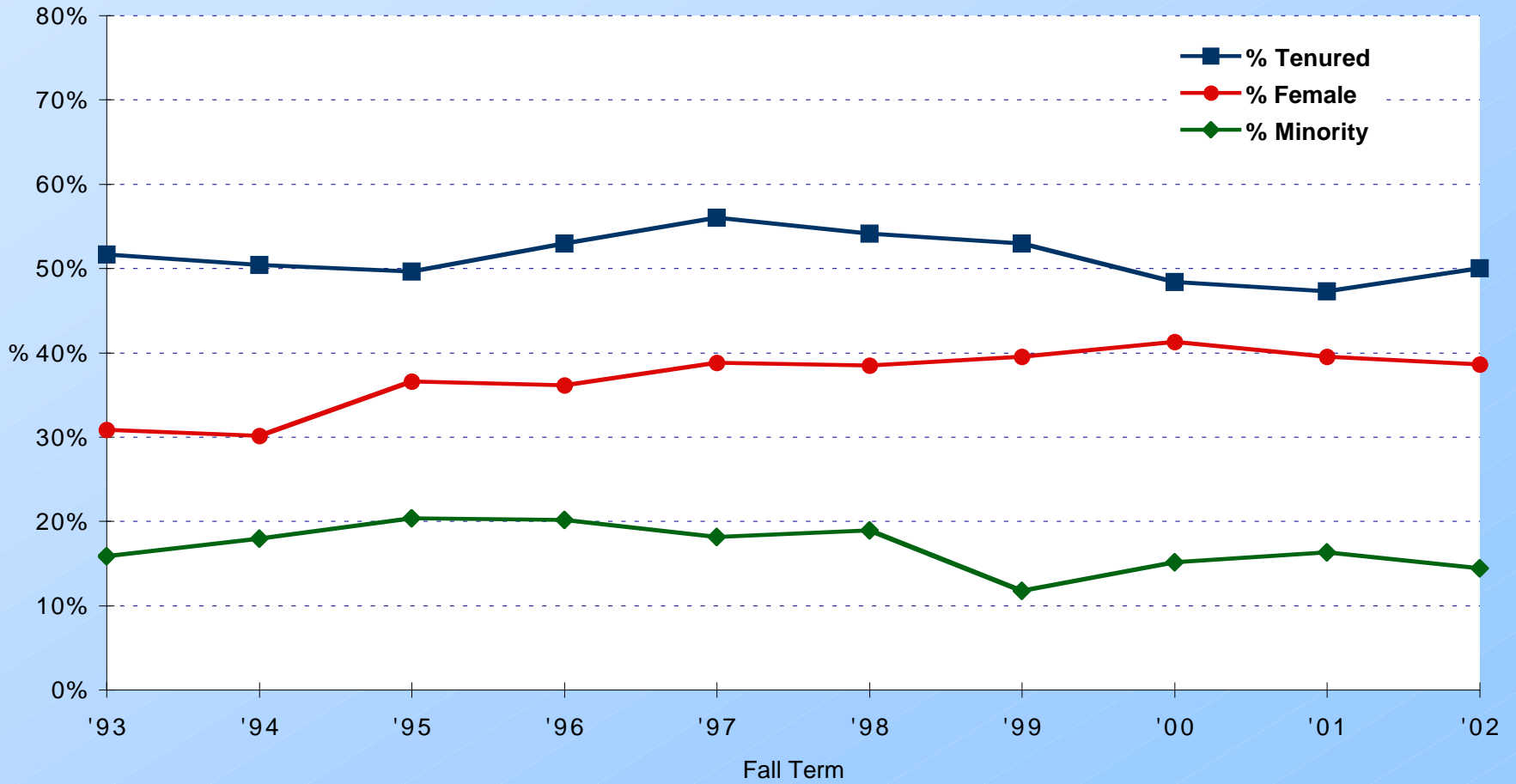
Female/Minority Faculty

Fiscal Year	Faculty Count	Percent of Faculty			
		Female	Minority	Tenured	Temporary
1971-72	85.0	NA	9.4%	48.2%	9.4%
1975-76	93.0	17.2%	12.9%	62.4%	14.0%
1980-81	96.0	19.8%	10.4%	60.9%	16.7%
1985-86	105.5	27.5%	13.3%	55.5%	21.8%
1990-91	118.0	25.4%	16.1%	55.1%	26.3%
1995-96	123.0	36.6%	20.3%	49.6%	31.7%
1997-98	116.0	38.8%	18.1%	56.0%	19.0%
1998-99	122.0	38.5%	18.9%	54.1%	23.8%
1999-00	119.0	39.5%	11.8%	52.9%	21.0%
2000-01	126.0	41.3%	15.1%	48.4%	18.3%
2001-02	129.0	39.5%	16.3%	47.3%	24.0%
2002-03	132.0	38.6%	14.4%	50.0%	18.2%

--Faculty Count includes full-time faculty only; does not include full-time administrators. It does include faculty on leave or sabbatical and their replacements.

--Temporary refers to appointments which are full-time and non-tenure-track.

UMM Faculty Characteristics: Percent of Total Faculty Who are Tenured, Female, or Minority



Index

- A**
Academic Divisions (3,4,5,6,7)
Academic Services (3,4,5,6,7)
Academic Support (9,12,13,15,17)
ACT Scores (19,21)
Administration (3,5,6,7,48)
Advanced Standing Students (28)
Anthropology (37,41,43,47,48)
Area of Concentration (38,41)
Art History Discipline (37,40,42,46,48)
Art, Studio Discipline (37,40,42,46,48)
Athletics, see *Intercollegiate Athletics*
Auxiliary Enterprises (9,12,13,15,16)
- B**
Biology Discipline (37,40,42,46,48)
Business Services (12,13,15,16)
- C**
Chancellor's Office (12,13,15,16)
Charts (1,4,8,13,16,17,20,21,22, 24,26,31,33,39,44,45,49,52)
Chemistry Discipline (37,40,42,46,48)
Classes (46,47)
Class Size (46,47)
Collections (3)
Compensation (6)
Computer Science Discipline (37,40,42, 46,48)
Computing Services (3,5,6,7)
Continuing Education (3,5,6,7,22)
County Enrollment (22)
Crafts/Trades Employees (12,14)
Crookston Campus (23,25,27)
- D**
Declared Majors (37,38,39)
Degrees Granted (40,41)
Duluth Campus (23,25,27)
- E**
Economics (37,41,43,47,48)
Education Division (3,5,6,7,37,39,40, 42,44,45,46,48,49)
Elementary Education Discipline (37,40,42,46,48)
Endowment Income (9)
English Discipline (37,40,42,46,48)
Enrollment (19,23,24,25,26,27,28,29,46, 47)
Enrollment Projections (28)
European Studies Major (38,41)
Executive Management (12,14)
Expenditures 2001-02 (3,4,5,6,7)
Expenditures, 5-Year (5,9)
Expenditures, Compensation (3,6)
Expenditures, SE&E (7)
- F**
Faculty, FTE (19,42,43,45,46,47,48,49)
Faculty, Tenured (51,52)
Faculty, Temporary (51,52)
Faculty Line Items (48,49)
Faculty Salaries (50)
Fees (11)
Financial Aid Distributed (10)
Financial Data, IPEDS (9)
Foreign Students (22,29)
French Discipline (37,40,42,46,48)
Freshman Applicants (19)
Freshman Aptitude (19)
Freshmen, New (19,28)
Fringe Benefits (3,8)
FTE Faculty (19,42,43,45,46,47,48,49)
FYE Students (19,25,26,28,42,43,44)
- G**
General Operations and Maintenance Fund (3,5,6,7)
Geography Discipline (43,47)
Geology Discipline (37,40,42,46,48)
German Discipline (37,40,42,46,48)
Graduates (40,41)
Graduation Rates (32,33)
Grants and Contracts (9,10)
- H**
Headcount Enrollment (19,22,23,24,26,27, 28)
High School Rank (19,20)
High Schools (22)
History Discipline (37,41,43,47,48)
Humanities Division (3,5,6,7,37,39,40, 42,44,45,46,48,49)
- I**
Illinois Students (29)
Intercollegiate Athletics (3,5,6,7,12, 13,15,17)
Interdisciplinary Studies (3,5,6,7,38, 39,41,43,45,47)
IPEDS Financial Data (9)
Institutional Support Expenditures (9)
Instruction and Research (12,13,15)
Instruction Expenditures (9)
Instructor Credit Hours (46,47)
- J**
- K**
- L**
Latin American Area Studies Major (38,41)
Liberal Arts for the Human Services Major (37,41)
Library (3,5,6,7)
Loans (10)

Index

- M**
Majors of the Student Body (37,38,39)
Management Discipline (37,41,43,47,48)
Mathematics Discipline (37,40,42,46,48)
Media Services (3,5,6,7)
Minnesota Students (19,22)
Minority Faculty (51,52)
Minority Student Enrollment (27)
Music Discipline (37,40,42,46,48)
- N**
Natural Science Discipline (42,46)
Non-degree Students (28,38)
North Dakota Students (29)
- O**
Occupational Level of Graduates (35)
Office/Clerical Employees (12,14)
On-campus Students (19)
Organizational chart (1)
Out-of-State Students (19,22,29)
- P**
P&A Lines (48)
Philosophy Discipline (37,40,42,46,48)
Physics Discipline (37,40,42,46,48)
Plant Services (3,5,6,7,9,12,13,15,16)
Political Science Discipline (38,41,43,47,48)
Postgraduate Training (34)
Preprofessional Programs (38)
PSEO Students (38)
Psychology Discipline (38,41,43,47,48)
Public Services Expenditures (9)
- Q**
- R**
Ratio, Male/Female (19)
Ratio, Student/Faculty (19,42,43)
Research Expenditures (9)
Retention Rates (32,33)
Revenues (9)
Room and Board (11)
Russian Discipline (42,46,48)
- S**
Salaries (3,6,50)
Sales and Services (9)
Scholarships and Fellowships (9,10)
Science & Math Division (3,5,6,7,37,39,40,42,44,45,46,48,49)
SE&E (3,7,8)
Secondary Education (37,40,42,46,48)
Service Employees (12,14)
Social Science Major (37,41)
Social Sciences Division (3,5,6,7,37,39,41,43,44,45,47,48,49)
Sociology Discipline (38,41,43,47,48)
South Dakota Students (29)
Spanish Discipline (37,40,42,46,48)
Speech Communication Discipline (37,40,42,46,48)
Staffing (12,13,14,15,16,17)
State Legislative Appropriations (3,5,6,7,9)
Statistics Discipline (37,40,42,46,48)
Student Body Information (19)
Student Credit Hours (46,47)
Student/Faculty Ratio (19,42,43)
Student Origin (19,22)
Student Retention (32,33)
Student Services (3,5,6,7,9,12,13,15,17)
Support Professionals (12,14)
Support Services (3,4,5,6,7)
- T**
Tax Funds (3)
Teaching Faculty (12,14,17)
Technical Employees (12,14)
Temporary Faculty (51,52)
Tenured Faculty (51,52)
Theatre Arts Discipline (37,40,42,46,48)
Tuition and Fees (3,9,10)
Tuition Costs (11)
Tuition Grants (3)
Twin Cities Campus (23,25,27)
- U**
Undecided Students (38)
University of Minnesota System (23,25,27)
URL (title page)
- V**
- W**
Web Address (title page)
Wellness & Sport Science Discipline (42,46,48)
Wisconsin Students (29)
Women Faculty (51,52)
Women's Studies Major (38,41,43,47,48)
Work Study (10)
- X**
- Y**
- Z**