

2012

2010 Census Community Data Brochure- City of Wood Lake

Center for Small Towns (University of Minnesota, Morris)

Upper Minnesota Valley Regional Development Commission

Follow this and additional works at: <http://digitalcommons.morris.umn.edu/cst>

Recommended Citation

Center for Small Towns (University of Minnesota, Morris) and Upper Minnesota Valley Regional Development Commission, "2010 Census Community Data Brochure- City of Wood Lake" (2012). *Center for Small Towns*. Book 58.
<http://digitalcommons.morris.umn.edu/cst/58>

This Book is brought to you for free and open access by University of Minnesota Morris Digital Well. It has been accepted for inclusion in Center for Small Towns by an authorized administrator of University of Minnesota Morris Digital Well. For more information, please contact skulann@morris.umn.edu.

Housing & School Enrollment

The data presented below includes statistics related to school enrollment and housing in the Region, including median home values, median rent, median monthly housing costs and vacancy rates for communities in the UMRVDC Region and the State of Minnesota.

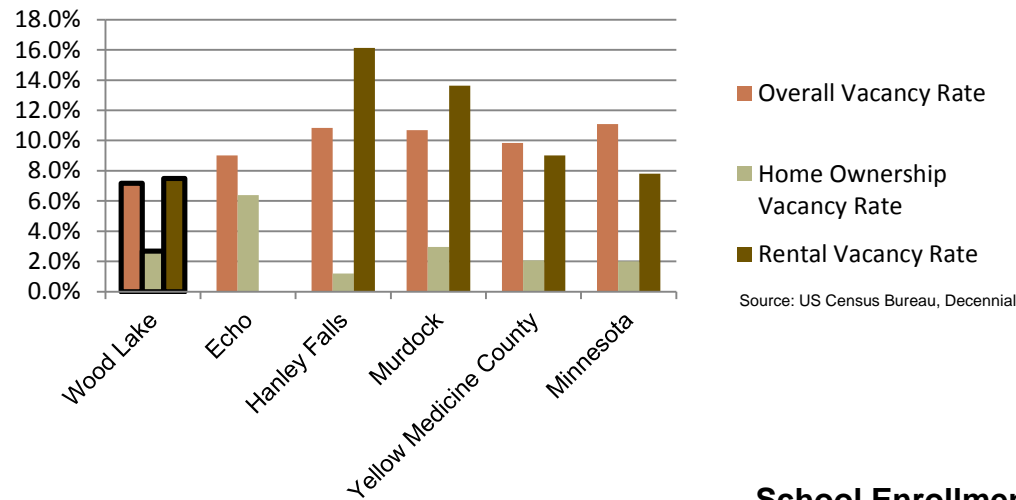
2010 Housing Statistics

City	Median Home Value	Median Rent	Median Monthly Housing Costs
Wood Lake	\$60,000	\$571	\$804
Clinton	\$46,300	\$334	\$655
Graceville	\$62,400	\$534	\$993
Hanley Falls	\$63,800	\$246	\$892
Maynard	\$56,500	\$625	\$1,100
Milan	\$55,000	\$398	\$797
Yellow Medicine County	\$97,100	\$505	\$997
Minnesota	\$206,200	\$759	\$1,549

Source: US Census Bureau, ACS (2006-2010)

At \$60,000, the median home value in Wood Lake is below that of both Yellow Medicine County and the State of Minnesota, however it falls in the middle for median home values among similar sized communities in the Region. The same is true for median monthly housing costs for homeowners. Median rent in Wood Lake, however is higher than that of the county and many other similar sized communities in the region.

2010 Vacancy Rates



Source: US Census Bureau, Decennial

Home ownership vacancy rate and rental vacancy rate are the proportion of the homeowner or rental inventory that is vacant "for sale" or vacant "for rent." The overall vacancy rate includes other vacancies such as vacant "sold - not occupied," seasonal housing and vacant "rented - not occupied." In 2010, the city of Wood Lake had vacancy rates typical of communities this size.

School Enrollment Since 1999

School District	1999-2000	2005-2006	2010-2011	% Change
Benson School District	1,216	1,050	970	-20.23%
Canby School District	766	581	522	-31.85%
Clinton-Graceville-Beardsley School District	565	434	377	-33.27%
Dawson-Boyd School District	681	544	517	-24.08%
Kerkhoven-Murdock-Sunburg School District	664	585	557	-16.11%
Lac qui Parle Valley School District	1,245	1,007	820	-34.14%
Lakeview School District	589	609	595	1.02%
M.A.C.C.R.A.Y. School District	986	790	674	-31.64%
Montevideo School District	1,599	1,459	1,342	-16.07%
Ortonville School District	717	530	527	-26.50%
Yellow Medicine East School District	1,299	1,081	862	-33.64%

Source: Minnesota Department of Education

Wood Lake is part of the Lakeview School District, however the actual school is located outside the Upper Minnesota Valley Region. Lakeview is the only school district in the Region that has experienced growth in school enrollment over the past decade. Note that data was only available for public school districts.

UMVRDC staff developed the concept and design for the Community Profile Brochures and data was collected by students and staff from the Center for Small Towns at the University of Minnesota, Morris. All information was collected from trusted sources such as the U.S. Census Bureau, the American Community Survey, Minnesota Department of Employment & Economic Development (DEED), and the Minnesota Department of Education and is presumed to be accurate.



Upper Minnesota Valley
REGIONAL
DEVELOPMENT
COMMISSION



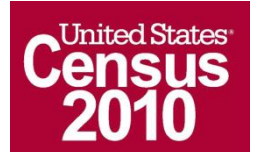
Helping Communities Prosper

2010 Census Data for Wood Lake, Minnesota



This Community Profile Brochure is comprised of statistical information from a variety of sources and will provide a snapshot of historical and current demographic, economic and social trends in the Upper Minnesota Valley Region. The purpose is to provide a concise summary of key community statistics to aid decision making about community and economic development.

This statistical and informational profile was compiled by the UMRVDC in collaboration with The Center for Small Towns at the University of Minnesota, Morris for all five counties (Big Stone, Chippewa, Lac qui Parle, Swift and Yellow Medicine) and 37 cities in the Upper Minnesota Valley Region.



Demographics

The demographic profile below provides a snapshot of Wood Lake and surrounding communities' historical, current and future population trends including population distribution and make up.

Comparison Historical Population from 1960 to 2010

City	1960	1970	1980	1990	2000	2010	% Change
Wood Lake	506	418	420	406	436	439	-13.24%
Households	181	161	NA	171	182	181	0.00%
Average Household Size	2.80	2.60	NA	2.37	2.40	2.43	-13.24%
Clinton	565	608	622	574	453	449	-20.53%
Graceville	823	735	780	671	605	577	-29.89%
Hanley Falls	334	265	265	246	323	304	-8.98%
Maynard	429	455	428	419	308	366	-14.69%
Milan	482	427	417	353	326	369	-23.44%
Yellow Medicine County	15,523	14,415	13,653	11,684	11,080	10,438	-32.76%

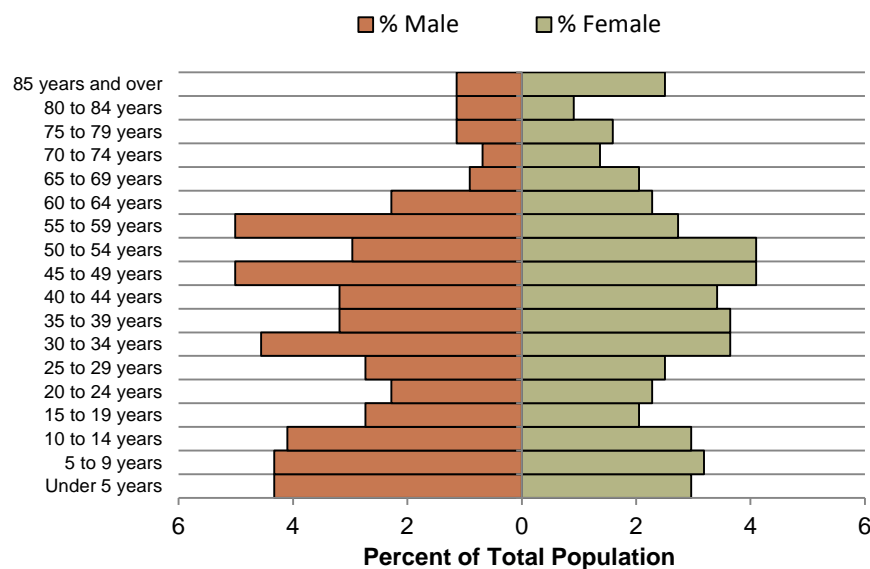
Source: US Census Bureau

Wood Lake Population Projections

	2015	2020	2025	2030	2035	% Change
Wood Lake	414	421	423	433	438	5.80%
Yellow Medicine County	9,980	9,970	9,720	9,660	9,600	-3.81%
UMVRDC Region	45,510	45,300	45,000	44,500	44,110	-3.08%

Source: Minnesota Demographic Center

Wood Lake Population Distribution, 2010

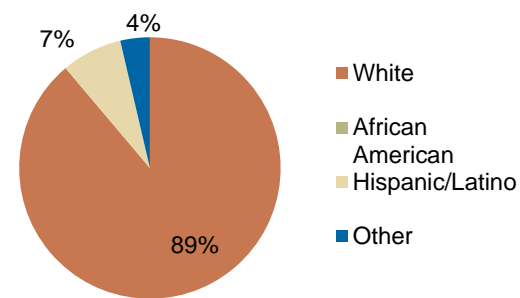


Source: U.S. Census Bureau, 2010 Decennial Census

The population distribution above shows that there are large percentages of the population between the ages of 45 to 60 years, 30 to 34 years, and 10 or under. Wood Lake is more diverse than other communities with 11% of the population being non-white.

Wood Lake has seen an overall decrease in population of over 13 percent from 1960-2010. Despite the overall decrease in population, Wood Lake has been experiencing small population increases over the past twenty years. This trend continues with the population projected to increase over the next few decades. This projected growth may be due to the fact that much of the current population of Wood Lake is in age cohorts under 60 and many under 15.

Race, 2010



Source: US Census Bureau, Decennial Census

Economic

The employment and industry data below represents a picture of the overall economic health of Wood Lake and Yellow Medicine County. This data shows the diversity of the Region's economy.

Annual Median Household Income:

- City of Wood Lake - \$45,417
- Big Stone - \$44,438
- Chippewa - \$44,712
- Lac qui Parle - \$48,269
- Swift - \$43,846
- **Yellow Medicine - \$50,740**
- UMVRDC Region - \$46,401
- Minnesota - \$57,243

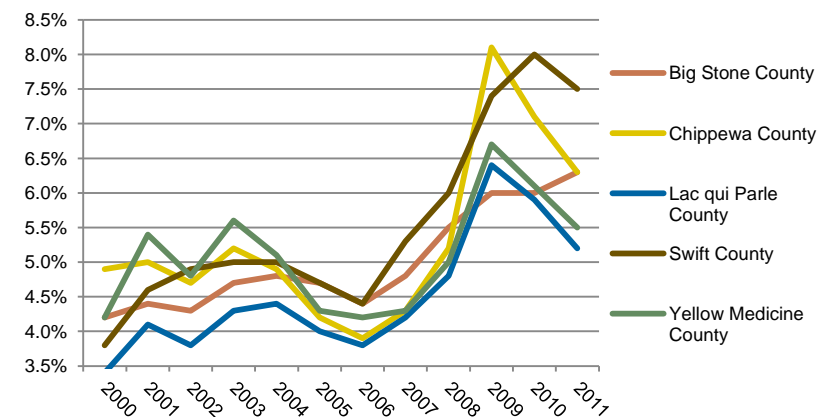
Source: 2007-2011 American Community Survey, U.S. Census Bureau

Types of Employment in Wood Lake, 2011

Types of Industry	Number of Employees	Number of Firms	Total Wages	Average Weekly Wage
Public Administration	6	1	\$88,891	\$354
Total, All Industries	62	16	\$2,042,864	\$633

Source: Minnesota Department of Employment and Economic Development, QCEW

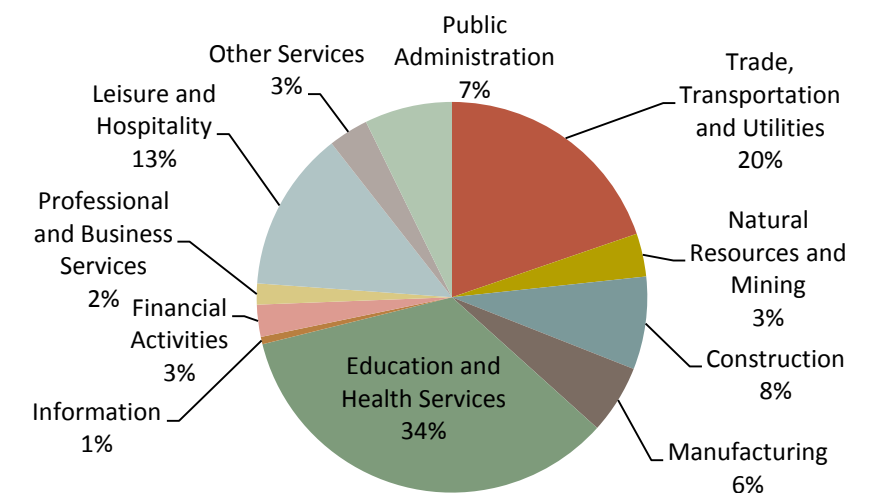
Unemployment Rates, 2000-2011



Source: Minnesota Department of Employment and Economic Development, LAUS

The employment categories shown in the table above and chart below show the 11 Super Sectors of Industry, which is the federal standard in data pertaining to business and industry. Much of the employment and economic activity in Wood Lake falls outside of the 11 Super Sectors, since only six of the 62 employees and one of 16 firms in Wood Lake are within the sectors. The pie chart below details that in Yellow Medicine County, just over one third of all employment comes from Education and Health Services and another large employment sector is Trade, Transportation and Utilities. Yellow Medicine County had a slight increase in unemployment during the Recession of 2007-2009, but in 2011 had an unemployment rate under 5.5%.

Employment by Industry in Yellow Medicine County



Source: Minnesota Department of Employment and Economic Development, QCEW

