

2012

## 2010 Census Community Data Brochure- City of Benson

Center for Small Towns (University of Minnesota, Morris)

Upper Minnesota Valley Regional Development Commission

Follow this and additional works at: <http://digitalcommons.morris.umn.edu/cst>

---

### Recommended Citation

Center for Small Towns (University of Minnesota, Morris) and Upper Minnesota Valley Regional Development Commission, "2010 Census Community Data Brochure- City of Benson" (2012). *Center for Small Towns*. Book 55.  
<http://digitalcommons.morris.umn.edu/cst/55>

This Book is brought to you for free and open access by University of Minnesota Morris Digital Well. It has been accepted for inclusion in Center for Small Towns by an authorized administrator of University of Minnesota Morris Digital Well. For more information, please contact [skulann@morris.umn.edu](mailto:skulann@morris.umn.edu).

# Housing & School Enrollment

The data presented below includes statistics related to school enrollment and housing in the Region, including median home values, median rent, median monthly housing costs and vacancy rates for communities in the UMRDC Region as well as the state of Minnesota.

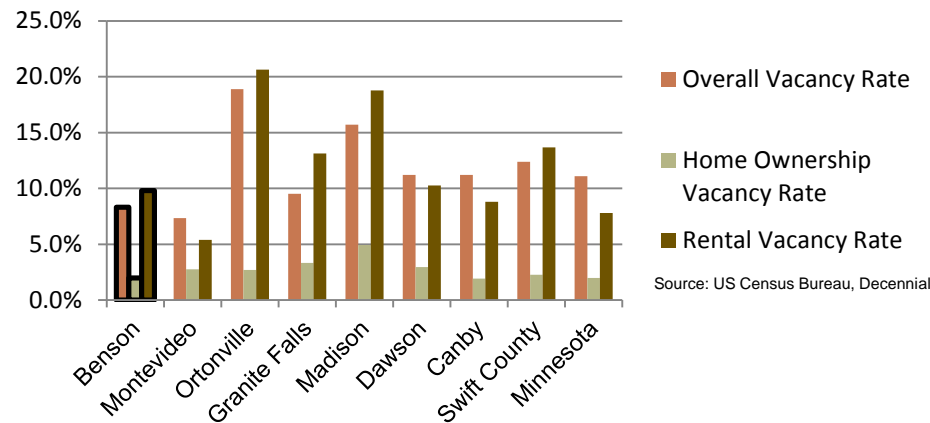
At just over \$100,000, the median home value in Benson is higher than the median home value in Swift County and most other similar sized cities within the Region. This trend continues for Benson's median monthly housing costs for homeowners. The median monthly rent in Benson, however falls in the middle compared to similar sized communities in the Region and is virtually the same as that of Swift County.

## 2010 Housing Statistics

City	Median Home Value	Median Rent	Median Monthly Housing Costs
<b>Benson</b>	<b>\$101,000</b>	<b>\$451</b>	<b>\$1,026</b>
Montevideo	\$84,600	\$547	\$978
Ortonville	\$78,400	\$441	\$800
Granite Falls	\$102,000	\$499	\$954
Madison	\$56,500	\$475	\$807
Dawson	\$68,600	\$444	\$785
Canby	\$64,500	\$384	\$848
Swift County	\$97,600	\$453	\$1,024
Minnesota	\$206,200	\$759	\$1,549

Source: US Census Bureau, ACS (2006-2010)

## 2010 Vacancy Rates



Source: US Census Bureau, Decennial

Home ownership vacancy rate and rental vacancy rate are the proportion of the homeowner or rental inventory that is vacant "for sale" or vacant "for rent." The overall vacancy rate includes other vacancies such as vacant "sold - not occupied," seasonal housing and vacant "rented - not occupied." In 2010, the city of Benson had a lower overall vacancy rate but higher rental vacancy rate compared to similar sized communities as well as the state of Minnesota.

## School Enrollment Since 1999

School District	1999-2000	2005-2006	2010-2011	% Change
<b>Benson School District</b>	<b>1,216</b>	<b>1,050</b>	<b>970</b>	<b>-20.23%</b>
Canby School District	766	581	522	-31.85%
Clinton-Graceville-Beardsley School District	565	434	377	-33.27%
Dawson-Boyd School District	681	544	517	-24.08%
Kerkhoven-Murdock-Sunburg School District	664	585	557	-16.11%
Lac qui Parle Valley School District	1,245	1,007	820	-34.14%
Lakeview School District	589	609	595	1.02%
M.A.C.C.R.A.Y. School District	986	790	674	-31.64%
Montevideo School District	1,599	1,459	1,342	-16.07%
Ortonville School District	717	530	527	-26.50%
Yellow Medicine East School District	1,299	1,081	862	-33.64%

Source: Minnesota Department of Education

UMVRDC staff developed the concept and design for the Community Profile Brochures and data was collected by students and staff from the Center for Small Towns at the University of Minnesota, Morris. All information was collected from trusted sources such as the U.S. Census Bureau, the American Community Survey, Minnesota Department of Employment & Economic Development (DEED), and the Minnesota Department of Education and is presumed to be accurate.

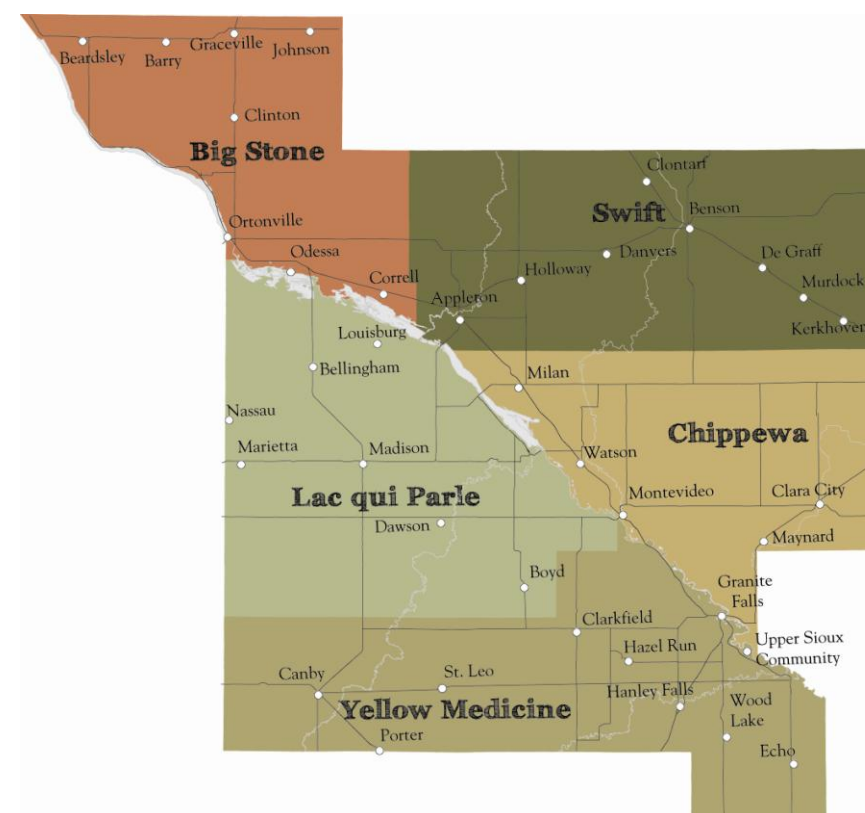


Upper Minnesota Valley  
REGIONAL DEVELOPMENT COMMISSION  
Helping Communities Prosper

323 W. Schlieman Ave. Appleton, MN 56208 320.289.1981 www.umvrdc.org

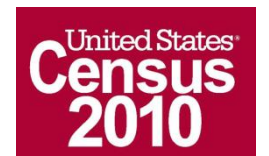


# 2010 Census Data for Benson, Minnesota



This Community Profile Brochure is comprised of statistical information from a variety of sources and will provide a snapshot of historical and current demographic, economic and social trends in the Upper Minnesota Valley Region. Having clear and concise community statistics will provide for more informed decision making about community development and business expansion, relocation and future investments.

This statistical and informational profile was compiled by the UMRDC in collaboration with The Center for Small Towns at the University of Minnesota, Morris for all five counties (Big Stone, Chippewa, Lac qui Parle, Swift and Yellow Medicine) and 37 cities in our Upper Minnesota Valley region.



For more information, or if you have questions, please visit our website: [www.umvrdc.org](http://www.umvrdc.org).



# Demographics

The demographic profile below provides a snapshot of Benson and surrounding communities' historical, current and future population trends including population distribution and make up.

## Comparison Historical Population from 1960 to 2010

City	1960	1970	1980	1990	2000	2010	% Change
<b>Benson</b>	<b>3,678</b>	<b>3,484</b>	<b>3,656</b>	<b>3,235</b>	<b>3,376</b>	<b>3,240</b>	<b>-11.91%</b>
Households	1,173	1,251	NA	1,382	1,451	1,469	25.23%
Average Household Size	3.14	2.78	NA	2.34	2.33	2.21	-29.66%
Montevideo	5,693	5,661	5,845	5,499	5,346	5,383	-5.45%
Ortonville	2,671	2,663	2,548	2,205	2,158	1,916	-28.27%
Granite Falls	2,165	2,582	2,666	3,083	3,070	2,897	33.81%
Madison	2,380	2,242	2,212	1,951	1,768	1,551	-34.83%
Dawson	1,766	1,699	1,901	1,626	1,539	1,540	-12.80%
Canby	2,146	2,147	2,143	1,826	1,903	1,795	-16.36%
<b>Swift County</b>	<b>14,936</b>	<b>13,177</b>	<b>12,920</b>	<b>10,724</b>	<b>11,956</b>	<b>9,783</b>	<b>-34.50%</b>

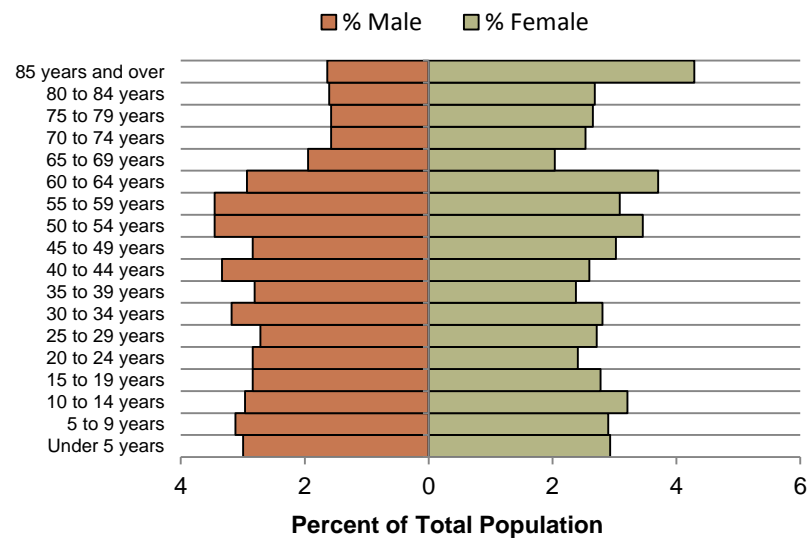
Source: US Census Bureau

## Population Projections

	2015	2020	2025	2030	2035	% Change
<b>Benson</b>	<b>3,101</b>	<b>3,044</b>	<b>3,001</b>	<b>2,950</b>	<b>2,899</b>	<b>-6.51%</b>
Swift County	10,510	10,300	10,150	9,960	9,800	-6.76%
UMVRDC Region	45,510	45,300	45,000	44,500	44,110	-3.08%

Source: Minnesota Demographic Center

## Benson Population Distribution, 2010

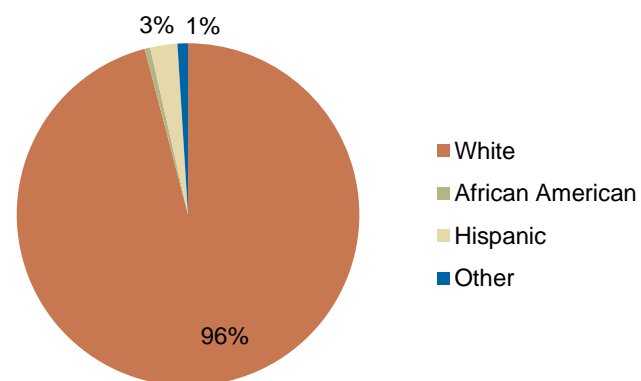


Source: U.S. Census Bureau, 2010

Benson has nearly an all white population, which is typical for a community of its size. The above population distribution shows that the population is well distributed among the age cohorts, more so than other cities in the Region. However like many of the communities in the region, the largest percentage of the population is between the ages of 50 and 65 as well as a large percentage of females 85 years and over.

Although Benson has seen an overall decrease in population of almost 12% of its total population from 1960-2010, it has fluctuated with losses and gains every other decade—with the losses being greater than the gains for an overall negative growth rate. The greatest decline in population occurred from 1980 to 1990 with a loss of 421 people, or 11.52% of the population. Since 1990, Benson's population has remained relatively flat, gaining and losing approximately the same number of people per decade. Benson, like Swift County, is projected to decrease in population over the next few decades, however at a slower rate than in previous decades.

## Race, 2010



Source: US Census Bureau, Decennial

# Economic

The employment and industry data below represents a picture of the overall economic health of Benson and Swift County. This data shows the diversity of the Region's economy.

## Annual Median Household Income:

- City of Benson - \$37,773
- Big Stone - \$44,438
- Chippewa - \$44,712
- Lac qui Parle - \$48,269
- Swift - \$43,846
- Yellow Medicine - \$50,740
- UMRDC Region - \$46,401
- Minnesota - \$57,243

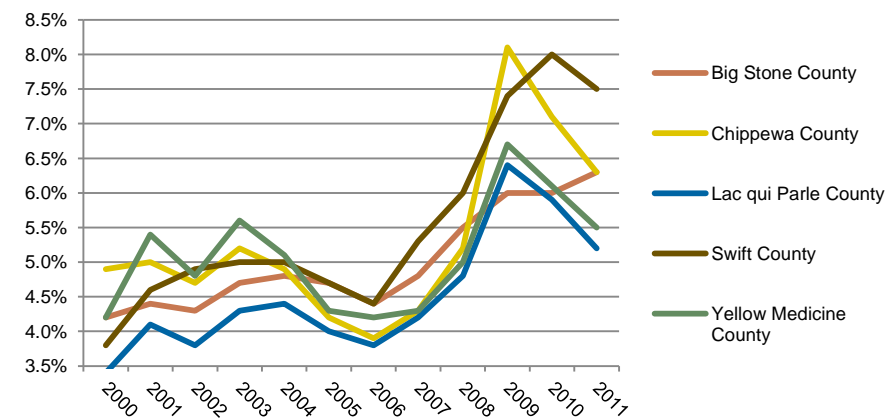
Source: 2007-2011 American Community Survey, U.S. Census Bureau

## Types of Employment in Benson, 2011

Types of Industry	Number of Employees	Number of Firms	Total Wages	Average Weekly Wage
Education and Health Services	495	15	\$14,798,801	\$574
Manufacturing	460	10	\$22,167,956	\$926
Trade, Transportation and Utilities	387	34	\$11,480,063	\$571
Leisure and Hospitality	173	13	\$1,683,002	\$187
Public Administration	107	10	\$3,937,063	\$710
Financial Activities	86	19	\$2,410,882	\$541
Professional and Business Services	73	13	\$1,995,543	\$522
<b>Total, All Industries</b>	<b>1,942</b>	<b>148</b>	<b>\$62,638,440</b>	<b>\$620</b>

Source: Minnesota Department of Employment and Economic Development, QCEW

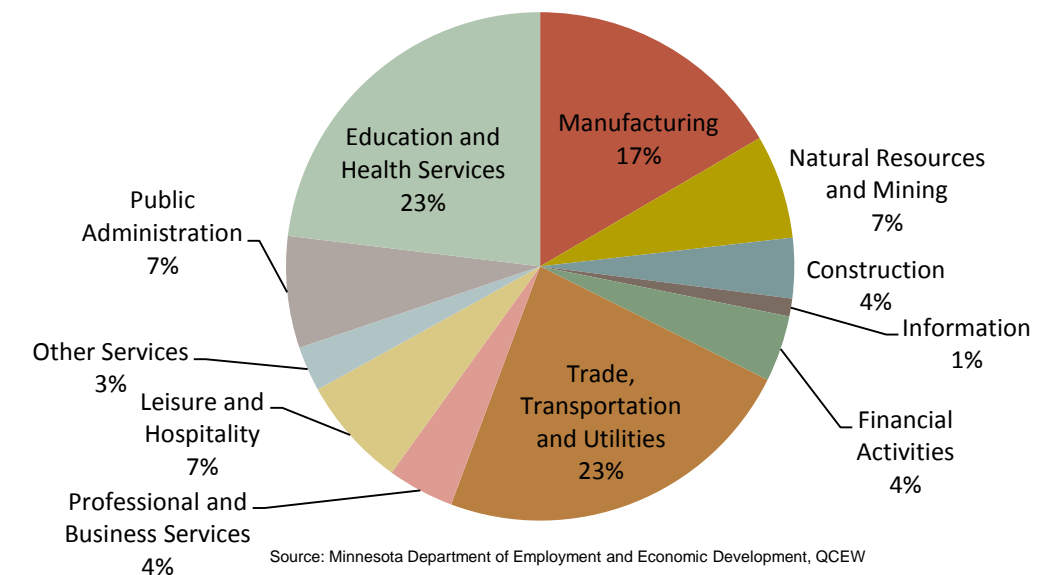
## Unemployment Rates, 2000-2011



Source: Minnesota Department of Employment and Economic Development, LAUS

The employment categories shown in the table above and chart below show the 11 Super Sectors of Industry, which is the federal standard in data pertaining to business and industry. Much of the economic activity in Benson is in Manufacturing and Education & Health Services. The pie chart below details that in Swift County, just about one half of all employment comes from Education and Health Services, and Trade, Transportation, and Utilities, both of which make up 23% of the employment in Swift County, but Manufacturing is not far behind with 17% of the employment in the county. Swift County had a slight increase in unemployment during the Recession of 2007 – 2009, but in 2011 had an unemployment rate under 7.5%.

## Employment by Industry in Swift County, 2011



Source: Minnesota Department of Employment and Economic Development, QCEW

