

2012

2010 Census Community Data Brochure- City of Nassau

Center for Small Towns (University of Minnesota, Morris)

Upper Minnesota Valley Regional Development Commission

Follow this and additional works at: <http://digitalcommons.morris.umn.edu/cst>

Recommended Citation

Center for Small Towns (University of Minnesota, Morris) and Upper Minnesota Valley Regional Development Commission, "2010 Census Community Data Brochure- City of Nassau" (2012). *Center for Small Towns*. Book 32.
<http://digitalcommons.morris.umn.edu/cst/32>

This Book is brought to you for free and open access by University of Minnesota Morris Digital Well. It has been accepted for inclusion in Center for Small Towns by an authorized administrator of University of Minnesota Morris Digital Well. For more information, please contact skulann@morris.umn.edu.

Housing & School Enrollment

The data presented below includes statistics related to school enrollment and housing in the Region, including median home values, median rent, median monthly housing costs and vacancy rates for communities in the UMRVDC Region and the State of Minnesota.

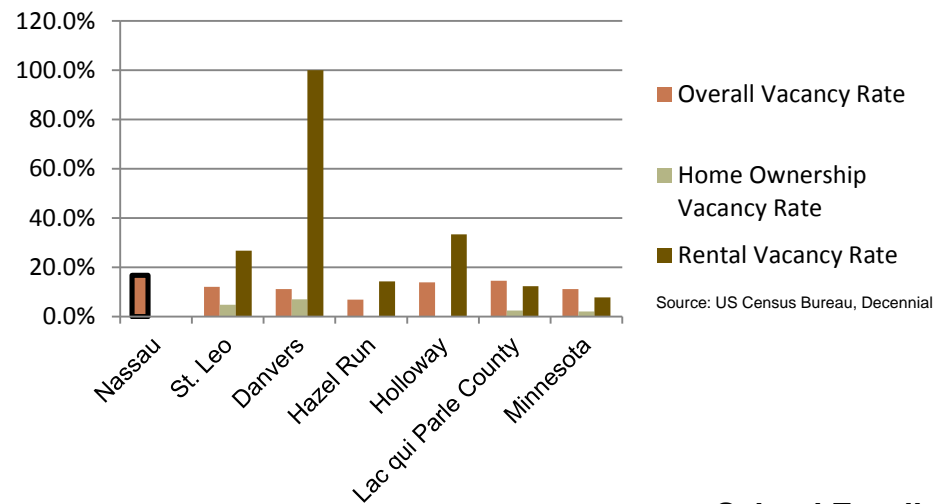
2010 Housing Statistics

City	Median Home Value	Median Rent	Median Monthly Housing Costs
Nassau	\$21,300	N/A	\$625
Correll	\$55,000	N/A	N/A
Danvers	\$96,700	N/A	\$955
Hazel Run	\$60,000	\$425	\$683
Holloway	\$34,000	\$204	\$850
St. Leo	\$39,000	\$433	\$656
Lac qui Parle County	\$77,100	\$449	\$868
Minnesota	\$206,200	\$759	\$1,549

Source: US Census Bureau, ACS (2006-2010)

At \$21,300, the median home value in Nassau is well below both Lac qui Parle County and the state of Minnesota, and is the lowest compared to similar sized communities in the Region. The median rent data is unavailable due to confidentiality, which is typical for communities this size. While the median monthly housing costs for homeowners is below the county and state, it is comparable to several like-sized communities in the Region.

2010 Vacancy Rates



Source: US Census Bureau, Decennial

Home ownership vacancy rate and rental vacancy rate are the proportion of the homeowner or rental inventory that is vacant "for sale" or vacant "for rent." The overall vacancy rate includes other vacancies such as vacant "sold - not occupied," seasonal housing and vacant "rented - not occupied." In 2010, the city of Nassau had the highest overall vacancy rate with 7 out of 42 housing units vacant, not for sale or rent.

School Enrollment Since 1999

School District	1999-2000	2005-2006	2010-2011	% Change
Benson School District	1,216	1,050	970	-20.23%
Canby School District	766	581	522	-31.85%
Clinton-Graceville-Beardsley School District	565	434	377	-33.27%
Dawson-Boyd School District	681	544	517	-24.08%
Kerkhoven-Murdock-Sunburg School District	664	585	557	-16.11%
Lac qui Parle Valley School District	1,245	1,007	820	-34.14%
Lakeview School District	589	609	595	1.02%
M.A.C.C.R.A.Y. School District	986	790	674	-31.64%
Montevideo School District	1,599	1,459	1,342	-16.07%
Ortonville School District	717	530	527	-26.50%
Yellow Medicine East School District	1,299	1,081	862	-33.64%

Source: Minnesota Department of Education

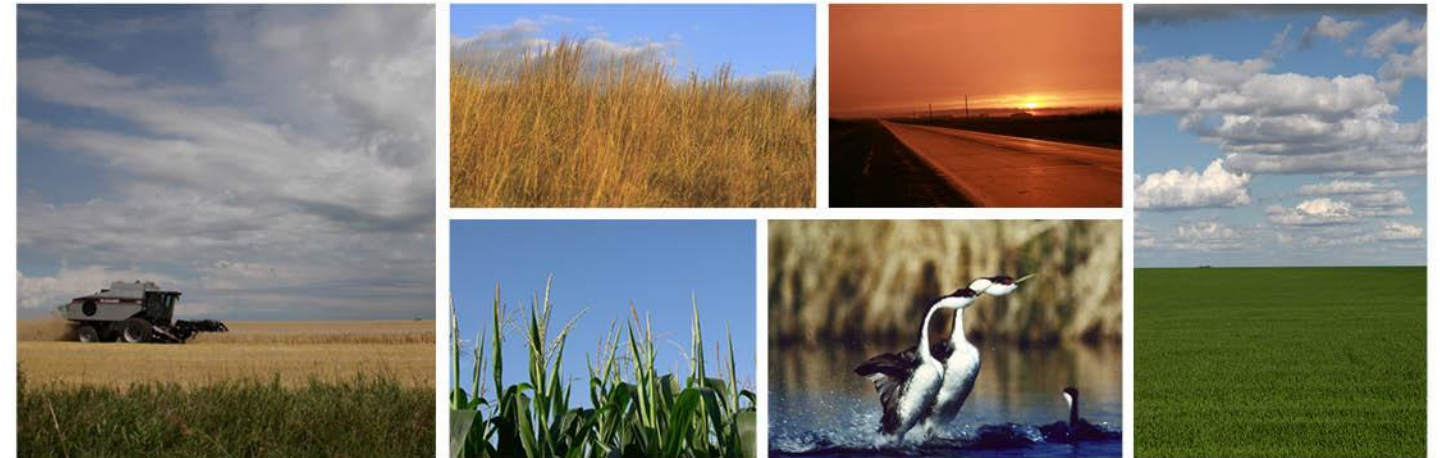
Nassau is part of the Lac qui Parle Valley School District, which, has seen the most dramatic decline in school enrollment over the last decade compared to surrounding schools. The decline in enrollment is consistent with the declining and aging population in the Region. Note that data was only available for public school districts.

UMVRDC staff developed the concept and design for the Community Profile Brochures and data was collected by students and staff from the Center for Small Towns at the University of Minnesota, Morris. All information was collected from trusted sources such as the U.S. Census Bureau, the American Community Survey, Minnesota Department of Employment & Economic Development (DEED), and the Minnesota Department of Education and is presumed to be accurate.



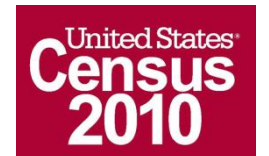
Helping Communities Prosper

2010 Census Data for Nassau, Minnesota



This Community Profile Brochure is comprised of statistical information from a variety of sources and will provide a snapshot of historical and current demographic, economic and social trends in the Upper Minnesota Valley Region. The purpose is to provide a concise summary of key community statistics to aid decision making about community and economic development.

This statistical and informational profile was compiled by the UMRDC in collaboration with The Center for Small Towns at the University of Minnesota, Morris for all five counties (Big Stone, Chippewa, Lac qui Parle, Swift and Yellow Medicine) and 37 cities in the Upper Minnesota Valley Region.



Demographics

The demographic profile below provides a snapshot of Nassau and surrounding communities' historical, current and future population trends including population distribution and make up.

Comparison Historical Population from 1960 to 2010

City	1960	1970	1980	1990	2000	2010	% Change
Nassau	115	126	182	83	83	72	-37.39%
Households	62	50	NA	41	41	35	-43.55%
Average Household Size	1.85	2.52	NA	2.02	2.02	2.06	10.91%
Correll	101	95	83	60	47	34	-66.34%
Danvers	132	136	152	98	108	97	-26.52%
Hazel Run	115	115	93	81	64	63	-45.22%
Holloway	242	146	142	123	112	92	-62.90%
St. Leo	129	153	147	111	106	100	-22.48%
Lac qui Parle County	13,330	11,164	10,592	8,924	8,067	7,259	-45.54%

Source: US Census Bureau

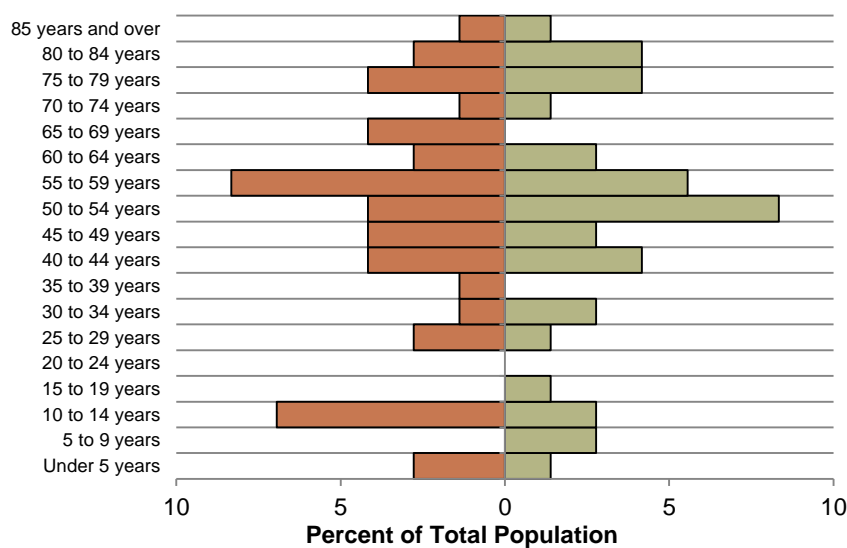
Nassau Population Projections

	2015	2020	2025	2030	2035	% Change
Nassau	73	73	74	74	74	1.37%
Lac qui Parle County	6,940	6,830	6,770	6,640	6,520	-6.05%
UMVRDC Region	45,510	45,300	45,000	44,500	44,110	-3.08%

Source: US Census Bureau

Nassau Population Distribution, 2010

■ % Male ■ % Female

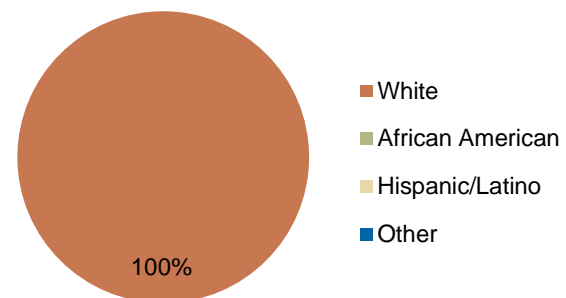


Source: U.S. Census Bureau, 2010 Decennial Census

The population distribution above shows that the community is aging with a large majority of the population above the age of 50 years. Nassau has an entirely white population, which is typical for a community of this size.

Nassau has seen an overall decrease in population of over 37 percent from 1960-2010. The largest decrease of over half the population (99 people) was between 1980 and 1990. The population is projected to stabilize and grow slightly over the next few decades. Nassau is one of the few communities in Lac qui Parle County and the Region projected to grow in the future.

Race, 2010



Source: US Census Bureau, Decennial

Economic

The employment and industry data below represents a picture of the overall economic health of Nassau and Lac qui Parle County. This data shows the diversity of the Region's economy.

Types of Employment in Lac qui Parle County, 2011

Types of Industry	Number of Employees	Number of Firms	Total Wages	Average Weekly Wage
Education and Health Services	817	18	\$24,586,545	\$579
Trade, Transportation and Utilities	502	61	\$14,764,131	\$566
Manufacturing	326	10	\$12,819,336	\$760
Construction	212	32	\$10,378,162	\$958
Public Administration	159	22	\$4,272,077	\$518
Financial Activities	130	28	\$4,634,917	\$683
Leisure and Hospitality	89	17	\$844,650	\$180
Other Services	78	20	\$999,363	\$247
Professional and Business Services	50	13	\$1,140,314	\$439
Natural Resources and Mining	30	5	\$1,122,508	\$715
Information	25	5	\$261,155	\$206
Total, All Industries	2,421	230	\$75,823,158	\$602

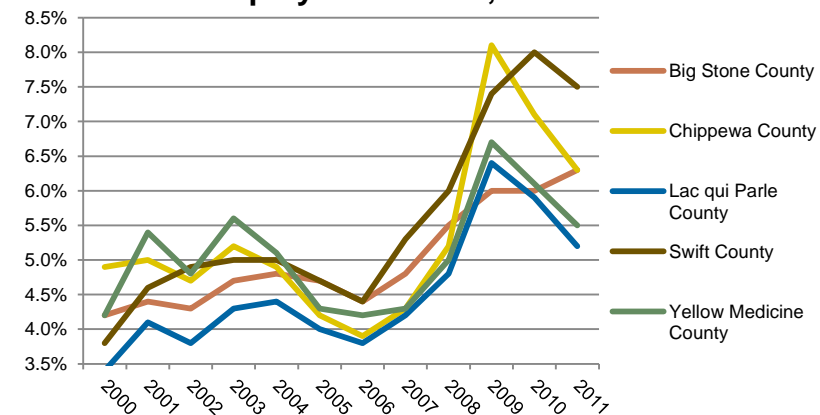
Source: Minnesota Department of Employment and Economic Development, QCEW

Annual Median Household Income:

- City of Nassau - \$36,250
- Big Stone - \$44,438
- Chippewa - \$44,712
- Lac qui Parle - \$48,269
- Swift - \$43,846
- Yellow Medicine - \$50,740
- UMRDC Region - \$46,401
- Minnesota - \$57,243

Source: 2007-2011 American Community Survey, U.S. Census Bureau

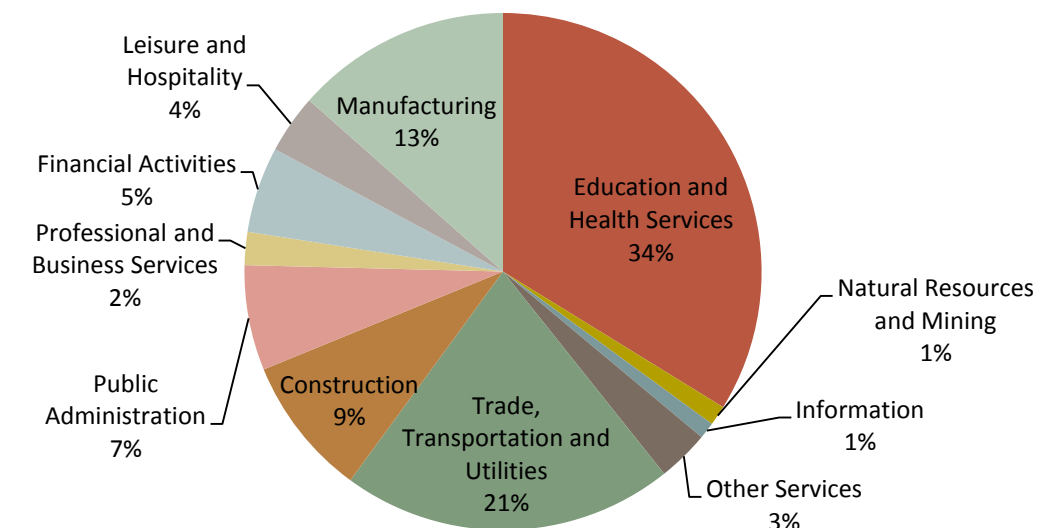
Unemployment Rates, 2000-2011



Source: Minnesota Department of Employment and Economic Development, LAUS

The employment categories shown in the table above and chart below show the 11 Super Sectors of Industry, which is the federal standard in data pertaining to business and industry. They show that in Lac qui Parle County, just over one third of all employment and much of the economic activity comes from Education and Health Services. The Manufacturing and Trade, Transportation and Utilities sectors are also large employers and contributors to the economic activity in the county. Lac qui Parle County had a slight increase in unemployment during the Recession of 2007-2009, but in 2011 had an unemployment rate under 5.5%, the lowest of all counties in the Region.

Employment by Industry in Lac qui Parle County, 2011



Source: Minnesota Department of Employment and Economic Development, QCEW

