

2012

2010 Census Community Data Brochure- City of Beardsley

Center for Small Towns (University of Minnesota, Morris)

Upper Minnesota Valley Regional Development Commission

Follow this and additional works at: <http://digitalcommons.morris.umn.edu/cst>

Recommended Citation

Center for Small Towns (University of Minnesota, Morris) and Upper Minnesota Valley Regional Development Commission, "2010 Census Community Data Brochure- City of Beardsley" (2012). *Center for Small Towns*. Book 29.
<http://digitalcommons.morris.umn.edu/cst/29>

This Book is brought to you for free and open access by University of Minnesota Morris Digital Well. It has been accepted for inclusion in Center for Small Towns by an authorized administrator of University of Minnesota Morris Digital Well. For more information, please contact skulann@morris.umn.edu.

Housing & School Enrollment

The data presented below includes statistics related to school enrollment and housing in the Region, including median home values, median rent, median monthly housing costs and vacancy rates for communities in the UMRVDC Region and the State of Minnesota.

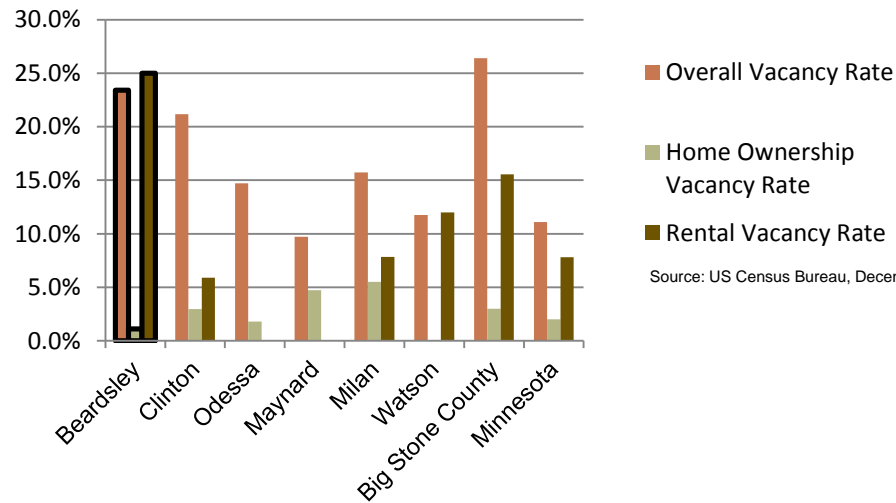
2010 Housing Statistics

City	Median Home Value	Median Rent	Median Monthly Housing Costs
Beardsley	\$47,700	\$283	\$914
Clinton	\$46,300	\$334	\$655
Odessa	\$42,500	N/A	\$633
Maynard	\$56,500	\$625	\$1,100
Milan	\$55,000	\$389	\$797
Watson	\$58,500	\$431	\$952
Big Stone County	\$81,900	\$447	\$924
Minnesota	\$206,200	\$759	\$1,549

Source: US Census Bureau, ACS (2006-2010)

The median home value in Beardsley is less than that of both Big Stone County and the state of Minnesota. However, it falls in the middle for median home values in surrounding communities. Monthly costs for homeowners are also average compared to other communities in the Region. Beardsley's median rent, on the other hand, is significantly lower compared to Big Stone County and other similar sized communities.

2010 Vacancy Rates



Source: US Census Bureau, Decennial

Home ownership vacancy rate and rental vacancy rate are the proportion of the homeowner or rental inventory that is vacant "for sale" or vacant "for rent." The overall vacancy rate includes other vacancies such as vacant "sold - not occupied," seasonal housing and vacant "rented - not occupied." In 2010, the city of Beardsley had a high overall and rental vacancy rate compared to other surrounding communities.

School Enrollment Since 1999

School District	1999-2000	2005-2006	2010-2011	% Change
Benson School District	1,216	1,050	970	-20.23%
Canby School District	766	581	522	-31.85%
Clinton-Graceville-Beardsley School District	565	434	377	-33.27%
Dawson-Boyd School District	681	544	517	-24.08%
Kerkhoven-Murdock-Sunburg School District	664	585	557	-16.11%
Lac qui Parle Valley School District	1,245	1,007	820	-34.14%
Lakeview School District	589	609	595	1.02%
M.A.C.C.R.A.Y. School District	986	790	674	-31.64%
Montevideo School District	1,599	1,459	1,342	-16.07%
Ortonville School District	717	530	527	-26.50%
Yellow Medicine East School District	1,299	1,081	862	-33.64%

Source: Minnesota Department of Education

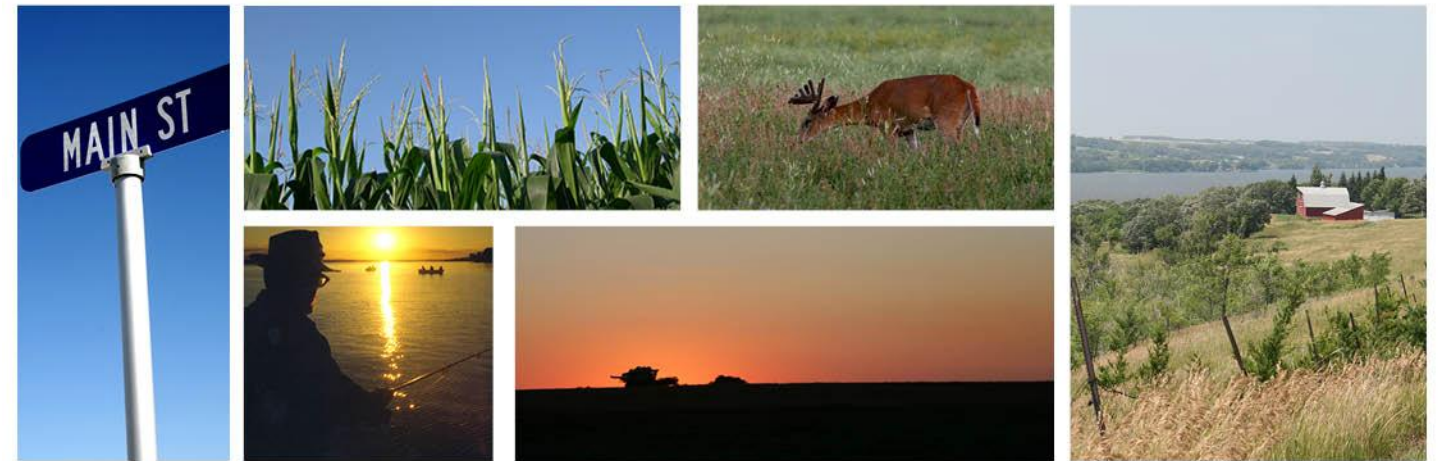
Beardsley is part of the CGB School District, which, like many of the school districts in the Region, has seen a steady decline in school enrollment in recent years. However, the decline in enrollment is consistent with the declining and aging population in the Region. Note that data was only available for public school districts.

UMVRDC staff developed the concept and design for the Community Profile Brochures and data was collected by students and staff from the Center for Small Towns at the University of Minnesota, Morris. All information was collected from trusted sources such as the U.S. Census Bureau, the American Community Survey, Minnesota Department of Employment & Economic Development (DEED), and the Minnesota Department of Education and is presumed to be accurate.



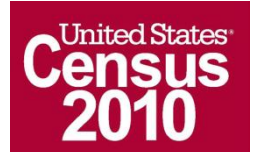
Helping Communities Prosper

2010 Census Data for Beardsley, Minnesota



This Community Profile Brochure is comprised of statistical information from a variety of sources and will provide a snapshot of historical and current demographic, economic and social trends in the Upper Minnesota Valley Region. The purpose is to provide a concise summary of key community statistics to aid decision making about community and economic development.

This statistical and informational profile was compiled by the UMRVDC in collaboration with The Center for Small Towns at the University of Minnesota, Morris for all five counties (Big Stone, Chippewa, Lac qui Parle, Swift and Yellow Medicine) and 37 cities in the Upper Minnesota Valley Region.



Demographics

The demographic profile below provides a snapshot of Beardsley and surrounding communities' historical, current and future population trends including population distribution and make up.

Comparison Historical Population from 1960 to 2010

City	1960	1970	1980	1990	2000	2010	% Change
Beardsley	410	366	344	297	262	233	-43.17%
Households	NA	NA	NA	136	125	108	-20.59%
Average Household Size	NA	NA	NA	2.18	2.10	2.16	-1.21%
Clinton	565	608	622	574	453	449	-20.53%
Odessa	234	194	177	155	113	135	-42.31%
Maynard	429	455	428	419	308	366	-14.69%
Milan	482	427	417	353	326	369	-23.44%
Watson	267	228	238	211	209	205	-23.22%
Big Stone County	8,954	7,941	7,716	6,285	5,820	5,269	-41.15%

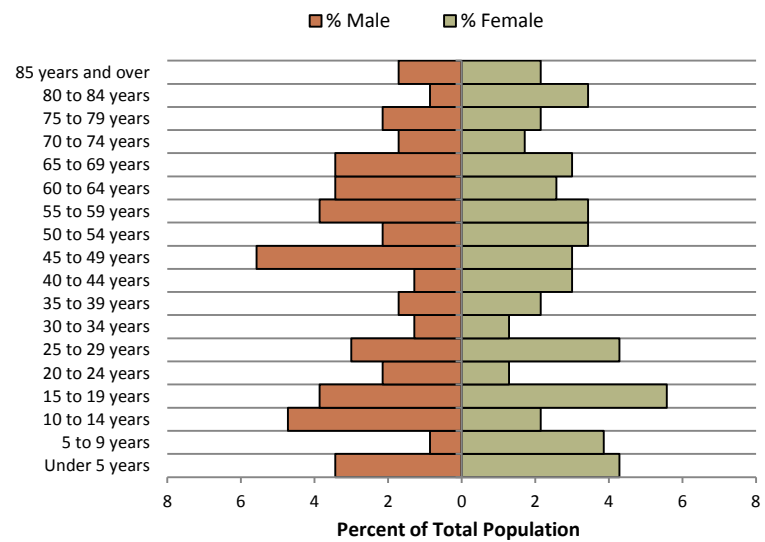
Source: US Census Bureau

Beardsley Population Projections

	2015	2020	2025	2030	2035	% Change
Beardsley	213	207	203	195	188	-11.74%
Big Stone County	5,190	5,160	5,160	5,110	5,060	-2.50%
UMVRDC Region	45,510	45,300	45,000	44,500	44,110	-3.08%

Source: Minnesota Demographic Center

Beardsley Population Distribution, 2010

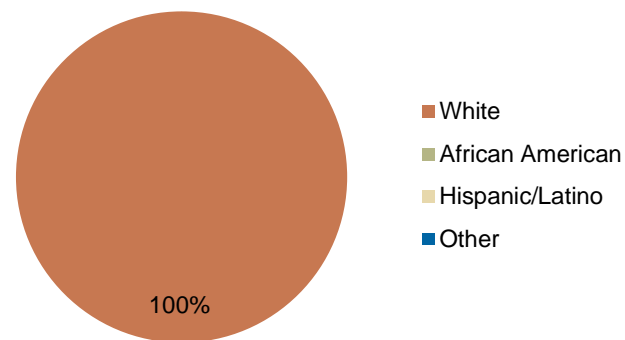


Source: U.S. Census Bureau, 2010

The population distribution shows that the population is well distributed, although it does appear to be aging with a majority of the population being 50 years or older. This is very typical of many smaller communities in the Region. Beardsley has an entirely white population, which is typical for a community of this size.

Beardsley has seen an overall decrease in population from 1960 to 2010 of approximately 43 percent. The decrease has been steady, with decreases between 20 and 50 people every decade since 1960. The population is projected to decrease over the next few decades but less dramatically than in previous decades.

Race, 2010



Source: US Census Bureau, Decennial

Economic

The employment and industry data below represents a picture of the overall economic health of Beardsley and Big Stone County. This data shows the diversity of the Region's economy.

Annual Median Household Income:

- City of Beardsley - \$44,500
- Big Stone - \$44,438
- Chippewa - \$44,712
- Lac qui Parle - \$48,269
- Swift - \$43,846
- Yellow Medicine - \$50,740
- UMVRDC Region - \$46,401
- Minnesota - \$57,243

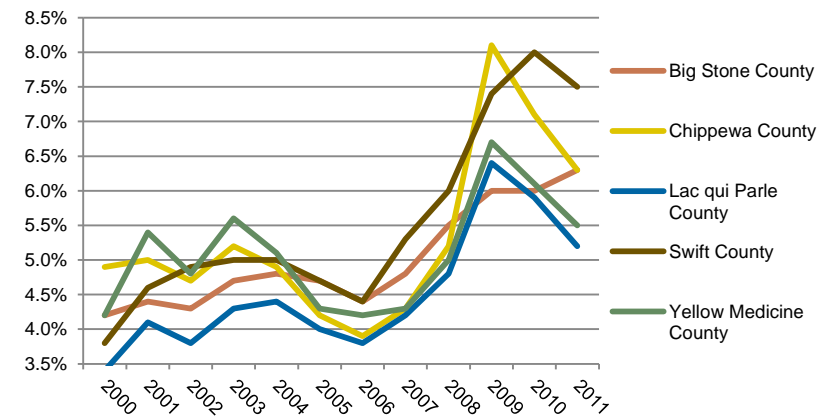
Source: 2007-2011 American Community Survey, U.S. Census Bureau

Types of Employment in Beardsley, 2011

Types of Industry	Number of Employees	Number of Firms	Total Wages	Average Weekly Wage
Trade, Transportation and Utilities	19	6	\$751,187	\$778
Public Administration	1	1	\$12,637	\$221
Education and Health Services	0	1	\$0	\$0
Total, All Industries	37	14	\$1,272,216	\$668

Source: Minnesota Department of Employment and Economic Development, QCEW

Unemployment Rates, 2000-2011

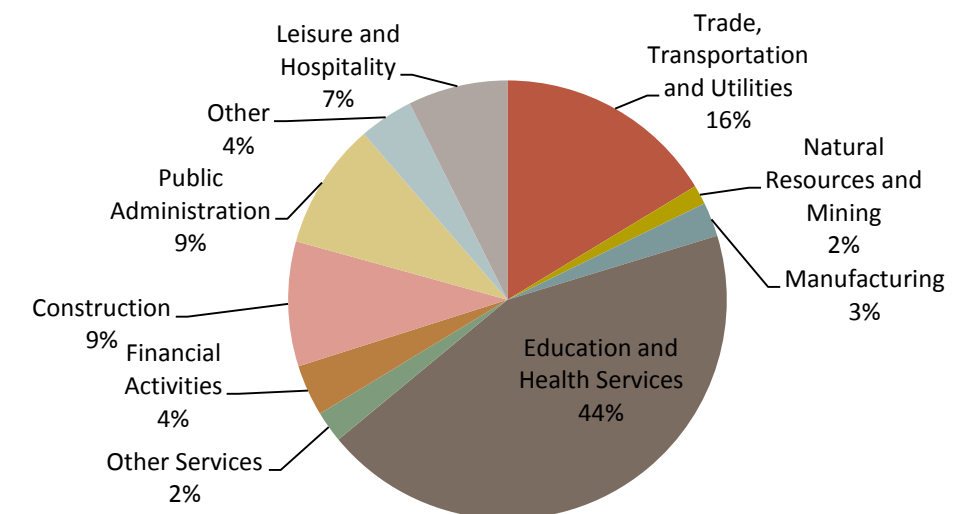


Source: Minnesota Department of Employment and Economic Development, LAUS

The employment categories shown in the table above and chart below show the 11 Super Sectors of Industry, which is the federal standard in data pertaining to business and industry. The majority of the economic activity in Beardsley is within the sector of Trade, Transportation and Utilities. The pie chart below details that in Big Stone County nearly half of all employment comes from Education and Health Services. Big Stone County had a slight increase in unemployment during the Recession of 2007-2009, but in 2011 maintained an unemployment rate under 6.5%.



Employment by Industry in Big Stone County, 2011



Source: Minnesota Department of Employment and Economic Development QCEW